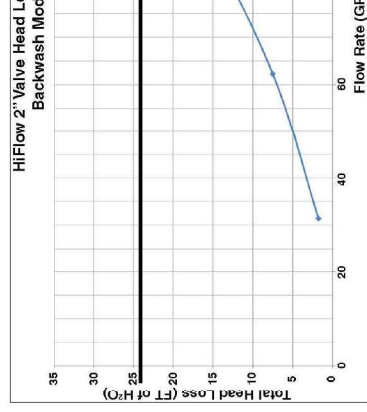
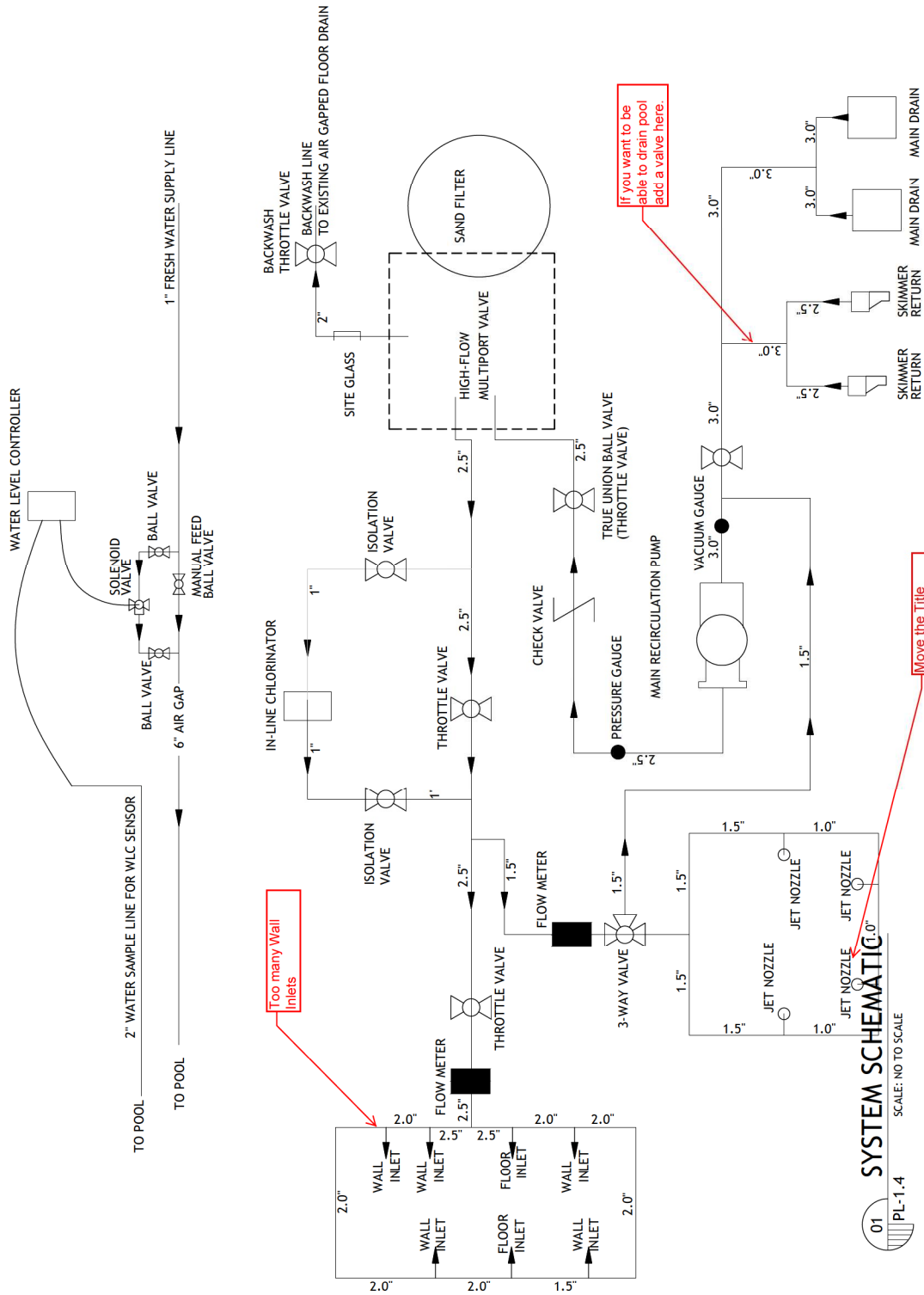


POOL EQUIPMENT

QTY	DESCRIPTION
1	TR140 C SAND FILTER BY PENTAIR
1	WHISPERFLO XP HIGH STANDARD 3HP PUMP
1	1/2" X 1/2" X 1/2" GLETT (3" PIPING)
1	1/2" X 1/2" X 1/2" GLETT (3" PIPING)
2	9" MAIN DRAIN SUMP AND GRATE ASSEMBLY
2	3.0" BLUE-WHITE IMPACT FLOW METER (ONE FOR DI
6	SP1419D HAYWARD 3"-DIRECTIONAL EYEBALL
8	HAY-25-1504 SP1022S INLET SUP FITTING
2	STA-RITE ADJUSTABLE FLOOR INLET RETURN ASSE
2	HAY-25-1507 SP1028 GRATE INSERT FOR SKIMMER
1	HAY-25-1504 SP1022S INLET SUP FITTING
1	POOL MISER AUTO WATER LEVELER
4	JANDY DECK JETS
2	UNDERWATER POOL LIGHT LED COLOR - 120V - 150'
1	PRESSURE GAUGE WITH SNUBBER AND GAUGE COCK
1	VACUUM GAUGE WITH SNUBBER AND GAUGE COCK
8	TRUE UNION BALL VALVES
1	SCH 40 PVC PIPE FOR ALL SUCTION, RETURN, AND
1	CUSTOM 1.90" O.D. HANDRAIL DMS-102 DECK MOUN
1	TAYLOR TEST KIT K2008 (DIP METHOD OF TESTING
4	1.80" O.D. ESCUTCHEONS FOR HANDRAIL
4	1.80" O.D. ESCUTCHEONS FOR HANDRAIL
1	*1X1 WATERLINE TILE (SEE HARDSCAPE PLAN FOR
2X2	KEYSTONE TILE FOR STERS AND UNDERWATER
6X6	DEPTH MARKERS, 4" BLACK LETTERING ON WHI
6X6	INTERNATIONAL "NO DIVING" SYMBOL
	WHITE PLASTER



02 HI-FLO VALVE HEAD LOSS
 SCALE: NOT TO SCALE
 PL-1.4

01 SYSTEM SCHEMATIC
 SCALE: NO TO SCALE
 PL-1.4

Move the Title Down

If you want to be able to drain pool add a valve here.

Too many Wall Inlets