

N 90°00'00" W - 805.53'

PROPOSED TRACT 2D-2-A
76,556 ACRES
3,337,749 SQ. FT.

S 00°00'00" W - 138.51'

N 01°52'02" E - 192.70'

DEDICATED DRAINAGE
SERVITUDE IN FAVOR OF
MULTIFAMILY PROPERTY
3.49 ACRES

WATER QUALITY POND

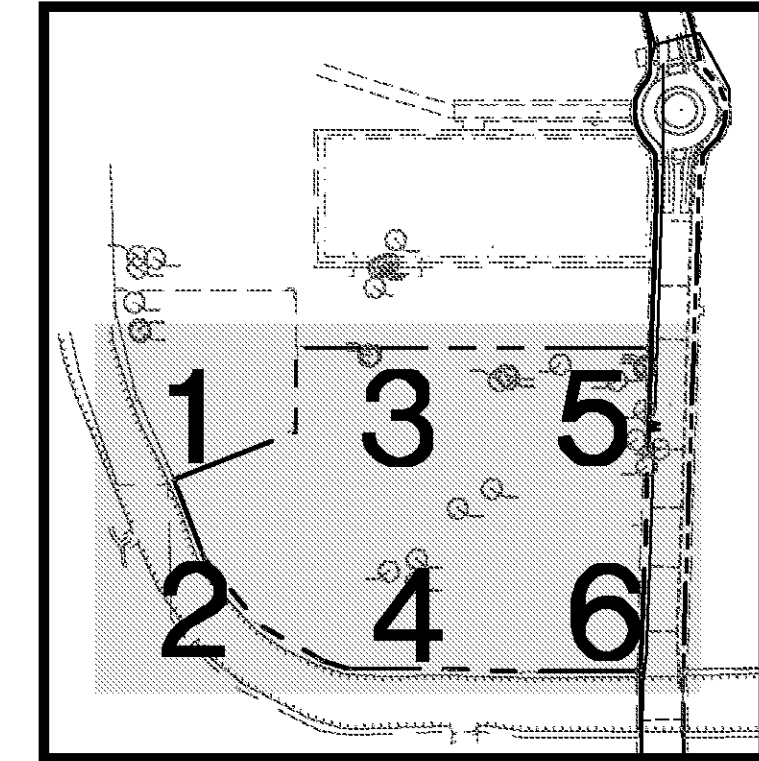
W-14 CANAL

PLAYGROUND
7,480 SF ±

W-14 CANAL
Act of Indebtedness and Security
Instrument No. 1907812

TOWN CENTER PARKWAY

TOWN CENTER PARKWAY
(BY OTHERS)



KEY MAP
N.T.S.

LEGEND - STRIPING

- SWSL/4" - SINGLE WHITE SOLID LINE / 4" WIDE
- DYSL/4" - DOUBLE YELLOW SOLID LINE / 4" WIDE EACH
- YSL/4" - SINGLE YELLOW SOLID LINE / 4" WIDE
- SWD/4" - SINGLE WHITE DASHED LINE / 4" WIDE
- SBSL/4" - SINGLE BLUE SOLID LINE / 4" WIDE
- SWSL/24" - SINGLE WHITE SOLID LINE / 24" WIDE
- SWSL/8" - SINGLE WHITE SOLID LINE / 8" WIDE

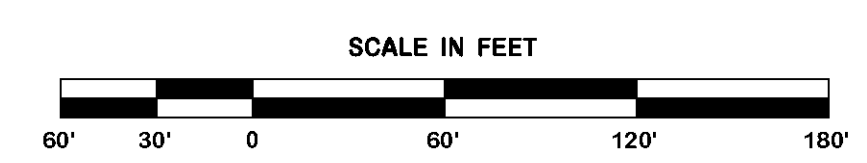
EXISTING LEGEND

- FOUND PROPERTY CORNER (AS NOTED)
- SET 3/4" IRON ROD
- EXISTING POWER POLE
- EXISTING POWER POLE WITH LIGHT
- EXISTING PARKING LOT LIGHT
- EXISTING GUY ANCHOR
- EXISTING TELEPHONE PEDESTAL
- EXISTING OVERHEAD POWER LINE
- EXISTING GAS METER
- EXISTING GAS VALVE
- EXISTING BARB WIRE FENCE LINE
- EXISTING WIRE MESH FENCE LINE
- EXISTING HIGH DENSITY POLYETHYLENE PIPE 12" HDPE
- EXISTING PIPE BOLLARD
- EXISTING MAILBOX
- ELEVATION OF TOP OF STRUCTURE TOP = 18.00
- ELEVATION OF BOTTOM OF STRUCTURE INV. = 15.00
- EXISTING SPOT ELEVATION
- ELEVATION OF TOP OF CURB 18.50 TC
- ELEVATION OF FACE OF CURB 18.00 FC
- EXISTING SEWER MANHOLE
- EXISTING SEWER CLEANOUT
- EXISTING DRAINAGE MANHOLE
- EXISTING SUBSURFACE DRAINAGE
- EXISTING CATCH BASIN/DROP INLET
- EXISTING FIRE HYDRANT
- EXISTING WATER METER
- EXISTING WATER VALVE
- EXISTING WATER LINE
- EXISTING REINFORCED CONCRETE PIPE 18" RCP
- EXISTING CORRUGATED METAL PIPE 24" CMP

LEGEND - NEW IMPROVEMENTS

- BUILDING
- CONCRETE CURB AND GUTTER
- PARKING SPACES
- ADA RAMP
- HEAVY DUTY ASPHALT OR CONCRETE
- STANDARD DUTY PAVEMENT
- SITE LIGHTING POLES
- FIRE HYDRANT
- WATER VALVE
- DOWN SPOUT
- DIRECTIONAL ARROWS
- FLUME
- GARAGES
- SIDEWALK
- DECORATIVE FENCE
- CHAINLINK FENCE
- COMMUNICATIONS BOX
- ELECTRIC BOX
- TREE TO REMAIN

OVERALL SITE PLAN



REVISION	BY

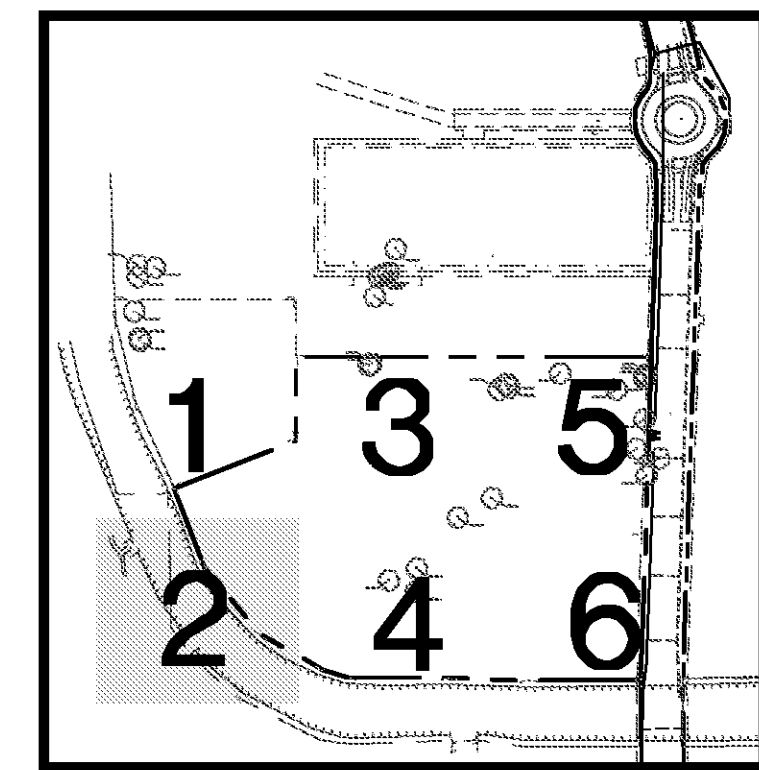
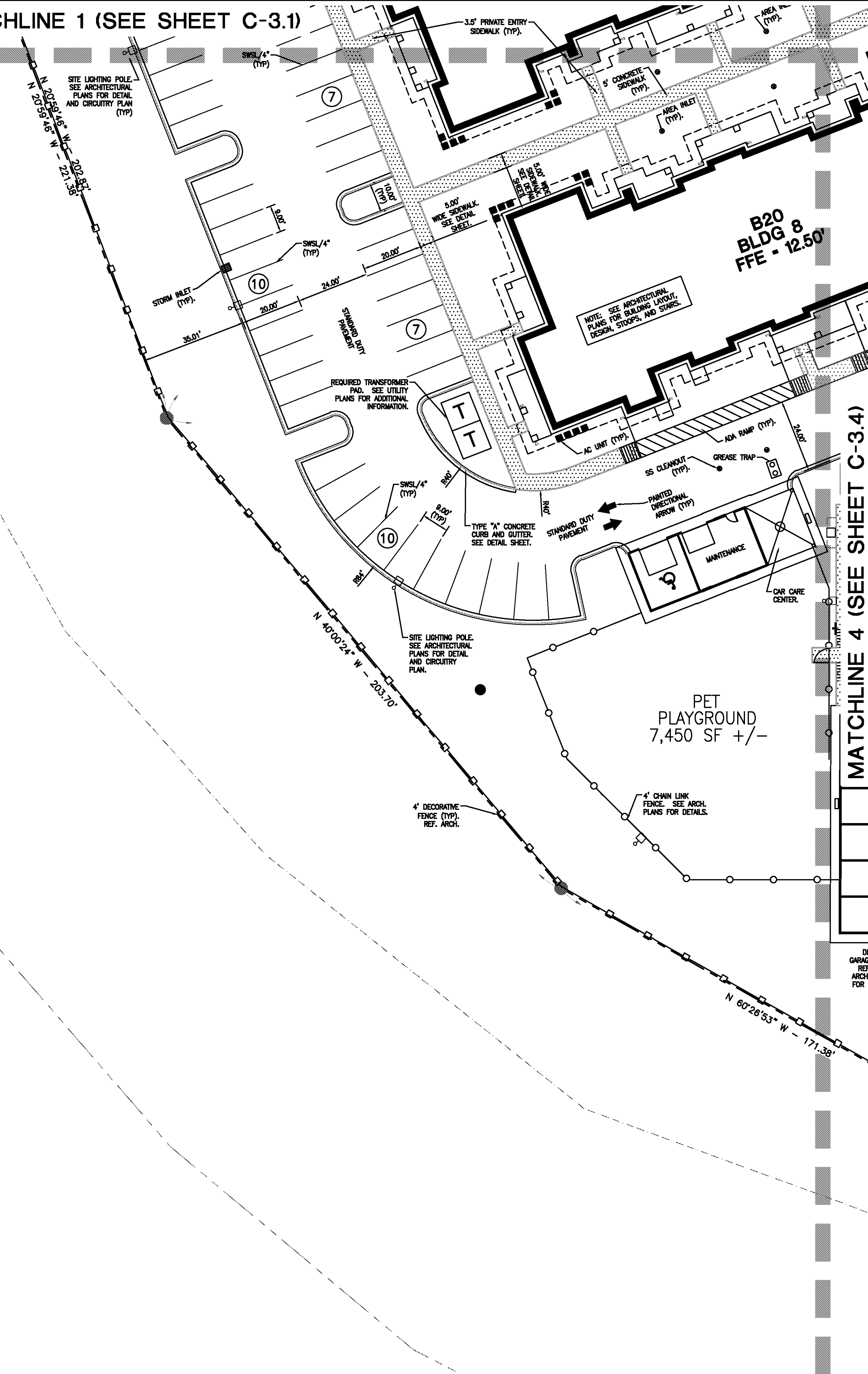
DDG
DUPLANTIS DESIGN GROUP, PC
CIVIL ENGINEERING - ARCHITECTURE
34 LOUIS PRIMA DRIVE COVINGTON, LA 70433
WWW.DDGPC.COM PHONE: 985-249-6860 || FAX: 985-249-6190
THIBODAUX | COVINGTON | HOUSTON | BATON ROUGE | HOUMA

PROGRESS SET - FOR REVIEW ONLY
Issued 07/08/14
These documents are for Design Review and not intended for construction. Spikes or on the plans for the issuance of a permit. They were prepared by, or under the supervision of, Douglas E. Barillieux, P.E., 434541 Duplantis Design Group, PC

SPRINGS AT FREMAUX TOWN CENTER
SLIDELL, LOUISIANA
ST. TAMMANY PARISH
FOR CONTINENTAL 294 FUND LLC
MEMONEE FALLS, WI

DRAWN DGS
CHECKED DEB
ISSUED DATE 8/23/14
ISSUED FOR PERMITTING
PROJECT NO. 14-248
FILE 14-248 C-3 SITE
SHEET C-3.0

MATCHLINE 1 (SEE SHEET C-3.1)



KEY MAP
N.T.S.

LEGEND - STRIPING

- SWSL/4" - SINGLE WHITE SOLID LINE / 4" WIDE
- DYSL/4" - DOUBLE YELLOW SOLID LINE / 4" WIDE EACH
- YSL/4" - SINGLE YELLOW SOLID LINE / 4" WIDE
- SWDL/4" - SINGLE WHITE DASHED LINE / 4" WIDE
- SBSL/4" - SINGLE BLUE SOLID LINE / 4" WIDE
- SWSL/24" - SINGLE WHITE SOLID LINE / 24" WIDE
- SWSL/8" - SINGLE WHITE SOLID LINE / 8" WIDE

EXISTING LEGEND

- FOUND PROPERTY CORNER (AS NOTED) [Symbol]
- SET 3/4" IRON ROD [Symbol]
- EXISTING POWER POLE [Symbol]
- EXISTING POWER POLE WITH LIGHT [Symbol]
- EXISTING PARKING LOT LIGHT [Symbol]
- EXISTING GUY ANCHOR [Symbol]
- EXISTING TELEPHONE PEDESTAL [Symbol]
- EXISTING OVERHEAD POWER LINE [Symbol]
- EXISTING GAS METER [Symbol]
- EXISTING GAS VALVE [Symbol]
- EXISTING BARB WIRE FENCE LINE [Symbol]
- EXISTING WIRE MESH FENCE LINE [Symbol]
- EXISTING HIGH DENSITY POLYETHYLENE PIPE 12" HDPE [Symbol]
- EXISTING PIPE BOLLARD [Symbol]
- EXISTING MAILBOX [Symbol]
- ELEVATION OF TOP OF STRUCTURE TOP = 18.00
- ELEVATION OF BOTTOM OF STRUCTURE INV. = 15.00
- EXISTING SPOT ELEVATION [Symbol]
- ELEVATION OF TOP OF CURB 18.50 TC
- ELEVATION OF FACE OF CURB 18.00 FC
- EXISTING SEWER MANHOLE [Symbol]
- EXISTING SEWER CLEANOUT [Symbol]
- EXISTING DRAINAGE MANHOLE [Symbol]
- EXISTING SUBSURFACE DRAINAGE [Symbol]
- EXISTING CATCH BASIN/DROP INLET [Symbol]
- EXISTING FIRE HYDRANT [Symbol]
- EXISTING WATER METER [Symbol]
- EXISTING WATER VALVE [Symbol]
- EXISTING WATER LINE [Symbol]
- EXISTING REINFORCED CONCRETE PIPE 18" RCP [Symbol]
- EXISTING CORRUGATED METAL PIPE 24" CMP [Symbol]

NOTE:

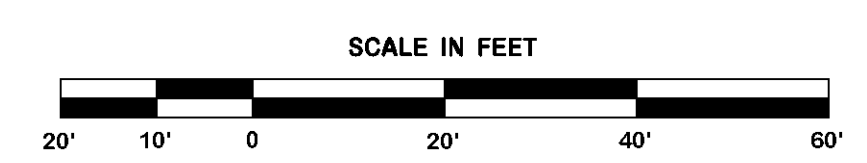
1. SEE SHEETS C-3.0 FOR OVERALL SITE PLAN.
2. SEE SHEETS C-4.0-C-4.8 FOR GRADING PLANS.
3. SEE SHEETS C-5.1-C-5.2 FOR UTILITY PLANS.
4. SEE SHEETS C-8.1-C-8.2 FOR EROSION CONTROL PLANS.
5. SEE SHEETS C-1 FOR GENERAL NOTES.
6. SEE SHEETS D-1-D-6 FOR DETAILS.
7. SEE SHEETS C-2 FOR BUILDING DIMENSIONAL CONTROL PLAN.



LEGEND - NEW IMPROVEMENTS

- BUILDING [Symbol]
- CONCRETE CURB AND GUTTER [Symbol]
- PARKING SPACES [Symbol]
- ADA RAMP [Symbol]
- HEAVY DUTY ASPHALT OR CONCRETE [Symbol]
- STANDARD DUTY PAVEMENT [Symbol]
- SITE LIGHTING POLES [Symbol]
- FIRE HYDRANT [Symbol]
- WATER VALVE [Symbol]
- DOWN SPOUT [Symbol]
- DIRECTIONAL ARROWS [Symbol]
- FLUME [Symbol]
- GARAGES [Symbol]
- SIDEWALK [Symbol]
- DECORATIVE FENCE [Symbol]
- CHAINLINK FENCE [Symbol]
- COMMUNICATIONS BOX [Symbol]
- ELECTRIC BOX [Symbol]
- TREE TO REMAIN [Symbol]

SITE PLAN
SECTION 2



REVISION	BY

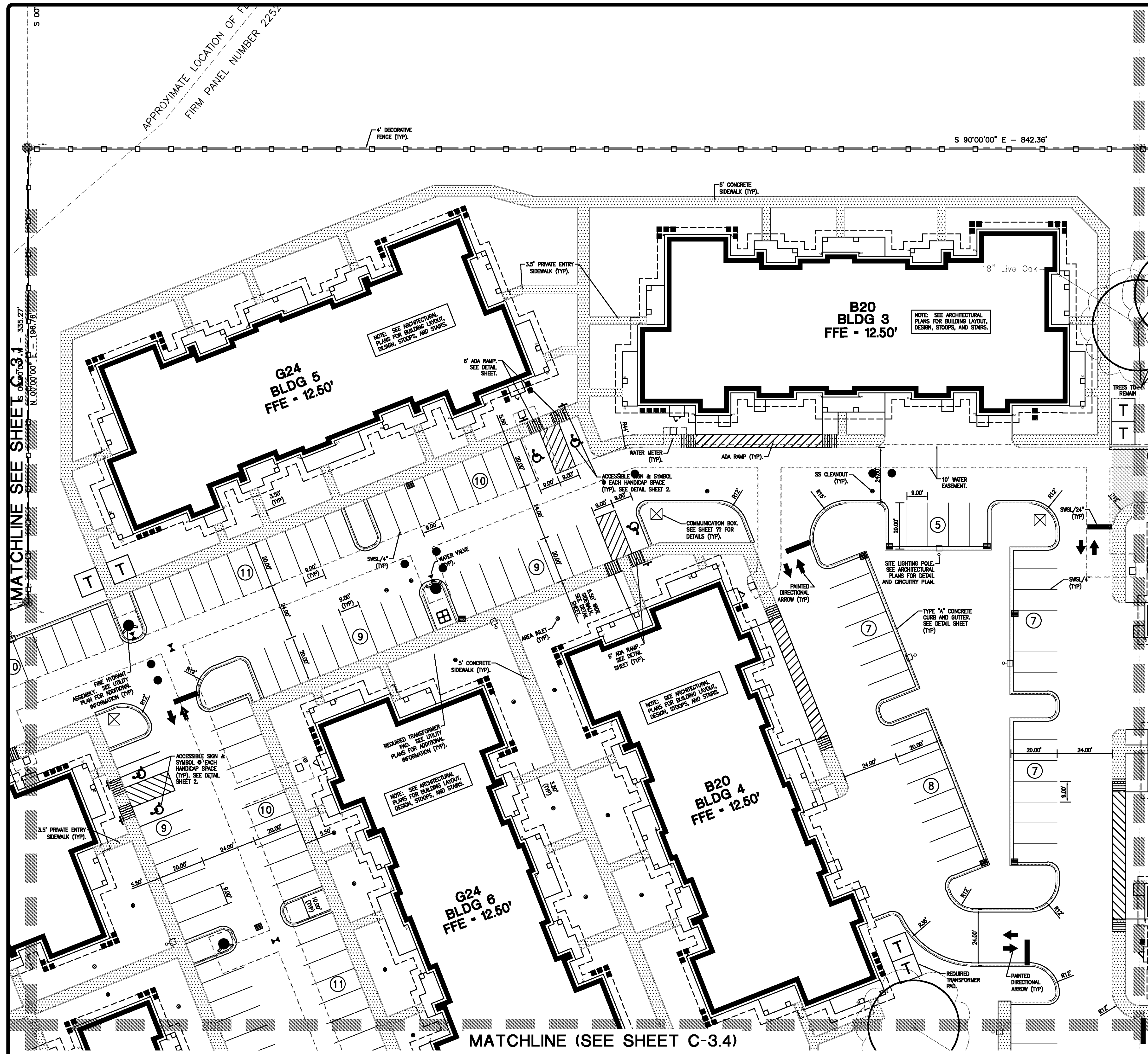
DDG
 DUPONTIS DESIGN GROUP, PC
 CIVIL ENGINEERING - ARCHITECTURE
 34 LOUIS PRIMA DRIVE COVINGTON, LA 70433
 WWW.DDGP.COM PHONE: 985-249-6860 || FAX: 985-249-6190
 THIBODAUX | COVINGTON | HOUSTON | BATON ROUGE | HOUMA

PROGRESS SET - FOR REVIEW ONLY
 Issued 07/08/14
 These documents are for Design Review and not intended for construction. Spikes or on the plans for the issuance of a permit. They were prepared by, or under the supervision of:
 Douglas E. Barillieux, P.E., #334541
 Dupontis Design Group, PC

SPRINGS AT FREMAUX TOWN CENTER
 SLIDELL, LOUISIANA
 ST. TAMMANY PARISH
 FOR CONTINENTAL 294 FUND LLC
 MEMONONIE FALLS, WI

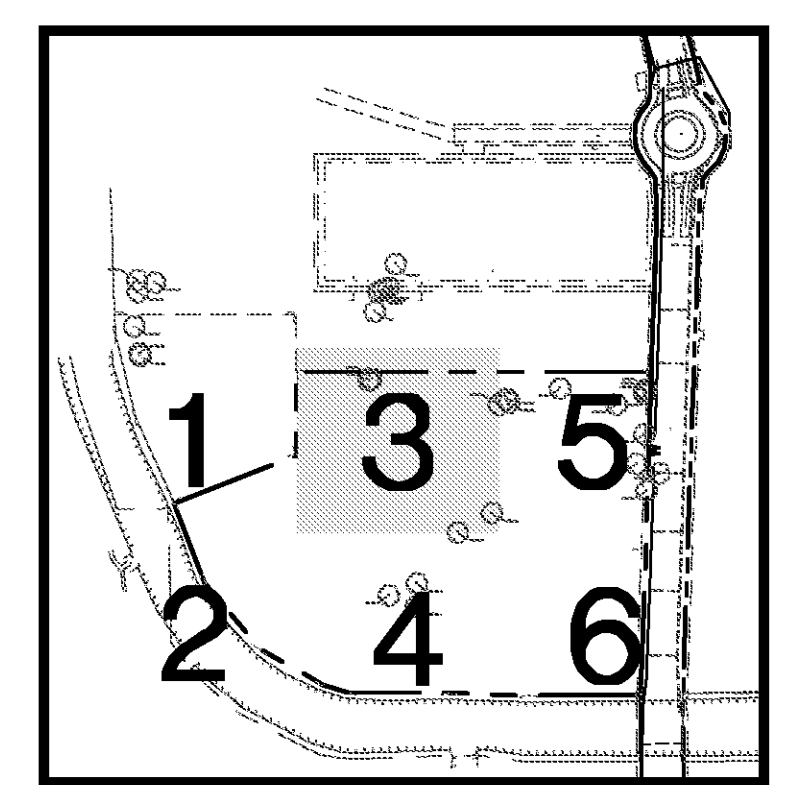
DRAWN DGS
 CHECKED DEB
 ISSUED DATE 8/23/14
 ISSUED FOR PERMITTING
 PROJECT NO. 14-248
 FILE 14-248 C-3 SITE
 SHEET C-3.2

Slidell Youth Football Assoc., Inc.
 Now at formerly
 1st. # 363760



APPROXIMATE LOCATION OF FIRM PANEL NUMBER 2252

MATCHLINE SEE SHEET C-3.1



KEY MAP
N.T.S.

LEGEND - STRIPING

- SWSL/4" - SINGLE WHITE SOLID LINE / 4" WIDE
- DYSL/4" - DOUBLE YELLOW SOLID LINE / 4" WIDE EACH
- SYSL/4" - SINGLE YELLOW SOLID LINE / 4" WIDE
- SWDL/4" - SINGLE WHITE DASHED LINE / 4" WIDE
- SBSL/4" - SINGLE BLUE SOLID LINE / 4" WIDE
- SWSL/24" - SINGLE WHITE SOLID LINE / 24" WIDE
- SWSL/8" - SINGLE WHITE SOLID LINE / 8" WIDE

EXISTING LEGEND

- FOUND PROPERTY CORNER (AS NOTED)
- SET 3/4" IRON ROD
- EXISTING POWER POLE
- EXISTING POWER POLE WITH LIGHT
- EXISTING PARKING LOT LIGHT
- EXISTING GUY ANCHOR
- EXISTING TELEPHONE PEDESTAL
- EXISTING OVERHEAD POWER LINE
- EXISTING GAS METER
- EXISTING GAS VALVE
- EXISTING BARB WIRE FENCE LINE
- EXISTING WIRE MESH FENCE LINE
- EXISTING HIGH DENSITY POLYETHYLENE PIPE
- EXISTING PIPE BOLLARD
- EXISTING MAILBOX
- ELEVATION OF TOP OF STRUCTURE
- ELEVATION OF BOTTOM OF STRUCTURE
- EXISTING SPOT ELEVATION
- ELEVATION OF TOP OF CURB
- ELEVATION OF FACE OF CURB
- EXISTING SEWER MANHOLE
- EXISTING SEWER CLEANOUT
- EXISTING DRAINAGE MANHOLE
- EXISTING SUBSURFACE DRAINAGE
- EXISTING CATCH BASIN/DROP INLET
- EXISTING FIRE HYDRANT
- EXISTING WATER METER
- EXISTING WATER VALVE
- EXISTING WATER LINE
- EXISTING REINFORCED CONCRETE PIPE
- EXISTING CORRUGATED METAL PIPE

NOTE:

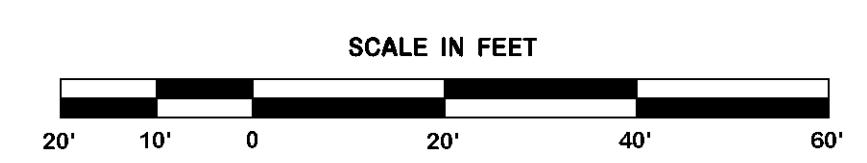
1. SEE SHEETS C-3.0 FOR OVERALL SITE PLAN.
2. SEE SHEETS C-4.0-C-4.6 FOR GRADING PLANS.
3. SEE SHEETS C-6.1-C-6.2 FOR UTILITY PLANS.
4. SEE SHEETS C-8.1-C-8.2 FOR EROSION CONTROL PLANS.
5. SEE SHEETS C-1 FOR GENERAL NOTES.
6. SEE SHEETS D-1-D-6 FOR DETAILS.
7. SEE SHEETS C-2 FOR BUILDING DIMENSIONAL CONTROL PLAN.



LEGEND - NEW IMPROVEMENTS

- BUILDING
- CONCRETE CURB AND GUTTER
- PARKING SPACES
- ADA RAMP
- HEAVY DUTY ASPHALT OR CONCRETE
- STANDARD DUTY PAVEMENT
- SITE LIGHTING POLES
- FIRE HYDRANT
- WATER VALVE
- DOWN SPOUT
- DIRECTIONAL ARROWS
- FLUME
- GARAGES
- SIDEWALK
- DECORATIVE FENCE
- CHAINLINK FENCE
- COMMUNICATIONS BOX
- ELECTRIC BOX
- TREE TO REMAIN

SITE PLAN SECTION 3



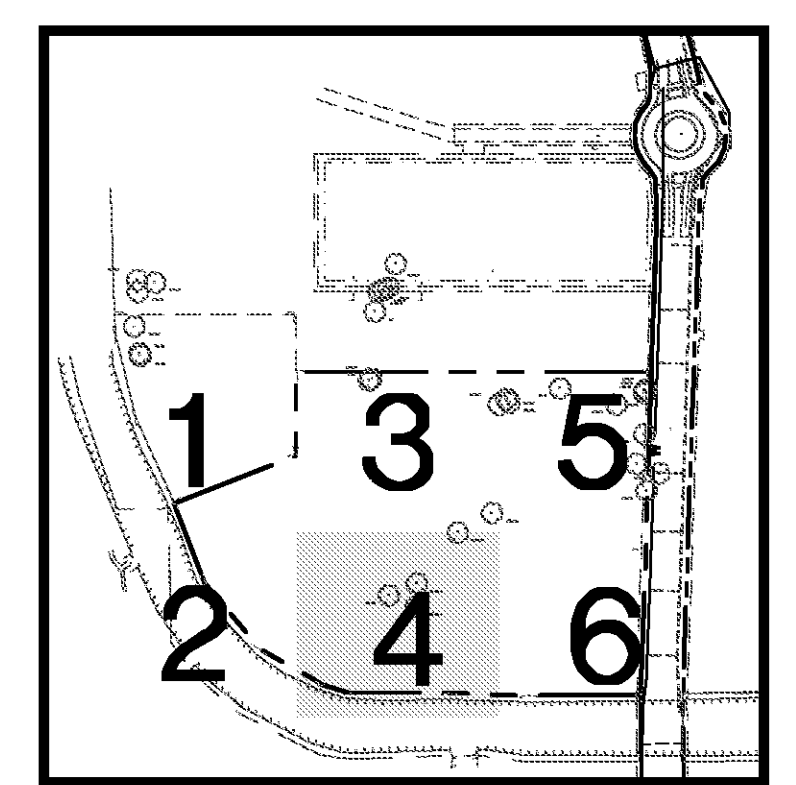
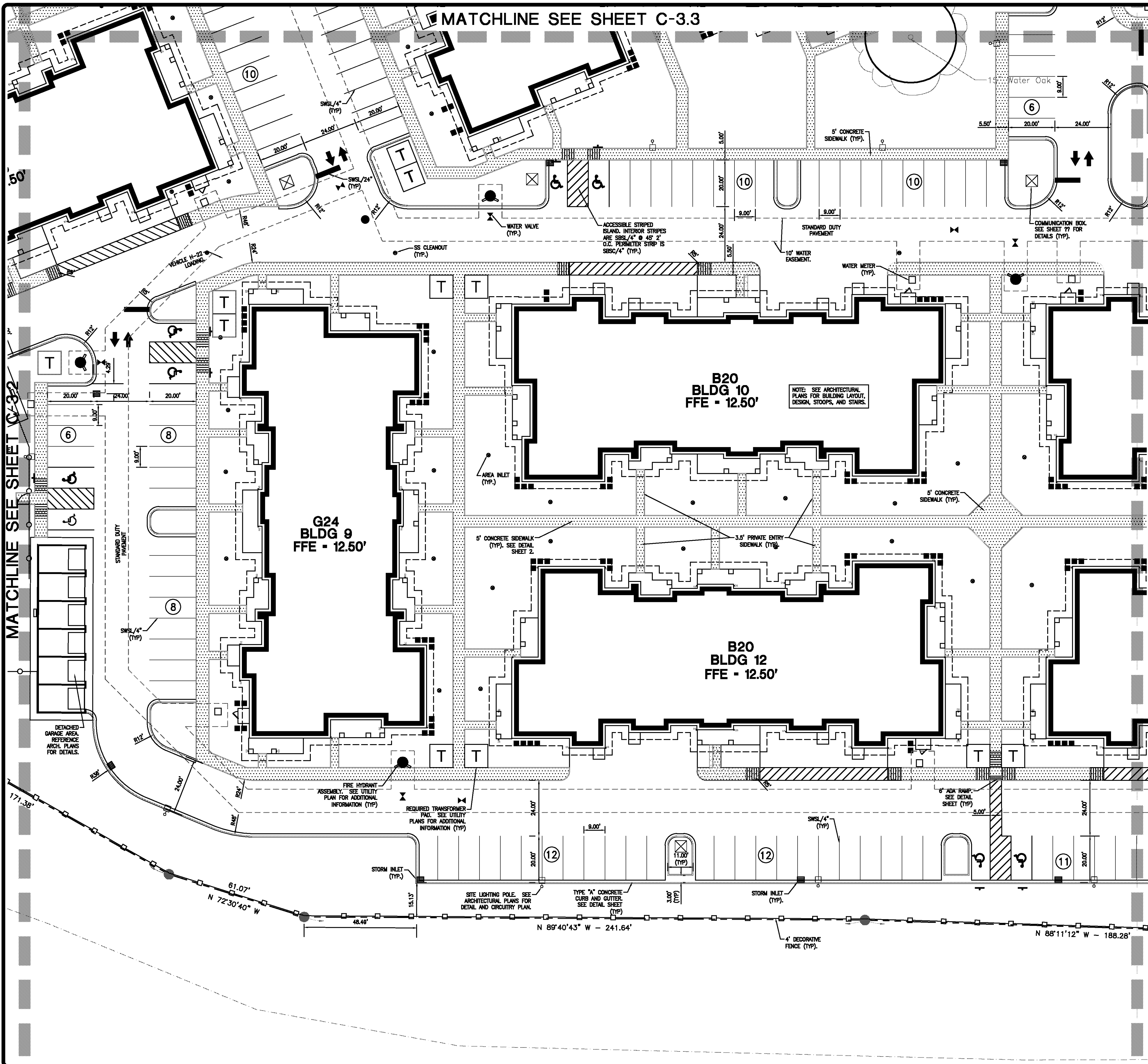
REVISION	BY

DDG
 DUPONTIS DESIGN GROUP, PC
 CIVIL ENGINEERING - ARCHITECTURE
 34 LOUIS PRIMA DRIVE COVINGTON, LA 70433
 WWW.DDGP.COM PHONE: 985-249-6860 FAX: 985-249-6190
 THIBODAUX | COVINGTON | HOUSTON | BATON ROUGE | LOUISIANA

PROGRESS SET - FOR REVIEW ONLY
 Issued 07/08/14
 These documents are for Design Review and not intended for construction. Signs or on the site for the issuance of a permit. They were prepared by, or under the supervision of, Douglas E. Barillieux, P.E., #34541 Dupontis Design Group, PC

SPRINGS AT FREMAUX TOWN CENTER
 SLIDELL, LOUISIANA
 ST. TAMMANY PARISH
 FOR CONTINENTAL 294 FUND LLC
 MEMONEE FALLS, WI

DRAWN DGS
 CHECKED DEB
 ISSUED DATE 6/23/14
 ISSUED FOR PERMITTING
 PROJECT NO. 14-248
 FILE 14-248 C-3 SITE
 SHEET C-3.3



- LEGEND - STRIPING**
- SWSL/4" - SINGLE WHITE SOLID LINE / 4" WIDE
 - DYSL/4" - DOUBLE YELLOW SOLID LINE / 4" WIDE EACH
 - SYSL/4" - SINGLE YELLOW SOLID LINE / 4" WIDE
 - SWDL/4" - SINGLE WHITE DASHED LINE / 4" WIDE
 - SBSL/4" - SINGLE BLUE SOLID LINE / 4" WIDE
 - SWSL/24" - SINGLE WHITE SOLID LINE / 24" WIDE
 - SWSL/8" - SINGLE WHITE SOLID LINE / 8" WIDE

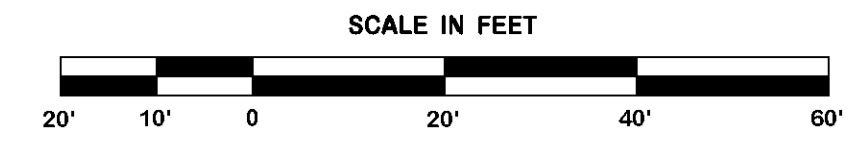
- EXISTING LEGEND**
- FOUND PROPERTY CORNER (AS NOTED)
 - SET 3/4" IRON ROD
 - EXISTING POWER POLE
 - EXISTING POWER POLE WITH LIGHT
 - EXISTING PARKING LOT LIGHT
 - EXISTING GUY ANCHOR
 - EXISTING TELEPHONE PEDESTAL
 - EXISTING OVERHEAD POWER LINE
 - EXISTING GAS METER
 - EXISTING GAS VALVE
 - EXISTING BARB WIRE FENCE LINE
 - EXISTING WIRE MESH FENCE LINE
 - EXISTING HIGH DENSITY POLYETHYLENE PIPE 12" HDPE
 - EXISTING PIPE BOLLARD
 - EXISTING MAILBOX
 - ELEVATION OF TOP OF STRUCTURE TOP = 18.00
 - ELEVATION OF BOTTOM OF STRUCTURE INV. = 15.00
 - EXISTING SPOT ELEVATION
 - ELEVATION OF TOP OF CURB 18.50 TC
 - ELEVATION OF FACE OF CURB 18.00 FC
 - EXISTING SEWER MANHOLE
 - EXISTING SEWER CLEANOUT
 - EXISTING DRAINAGE MANHOLE
 - EXISTING SUBSURFACE DRAINAGE
 - EXISTING CATCH BASIN/DROP INLET
 - EXISTING FIRE HYDRANT
 - EXISTING WATER METER
 - EXISTING WATER VALVE
 - EXISTING WATER LINE
 - EXISTING REINFORCED CONCRETE PIPE 18" RCP
 - EXISTING CORRUGATED METAL PIPE 24" CMP

- NOTE:**
1. SEE SHEETS C-3.0 FOR OVERALL SITE PLAN.
 2. SEE SHEETS C-4.0-C-4.6 FOR GRADING PLANS.
 3. SEE SHEETS C-6.1-C-6.2 FOR UTILITY PLANS.
 4. SEE SHEETS C-8.1-C-8.2 FOR EROSION CONTROL PLANS.
 5. SEE SHEETS C-1 FOR GENERAL NOTES.
 6. SEE SHEETS D-1-D-6 FOR DETAILS.
 7. SEE SHEETS C-2 FOR BUILDING DIMENSIONAL CONTROL PLAN.



- LEGEND - NEW IMPROVEMENTS**
- BUILDING
 - CONCRETE CURB AND GUTTER
 - PARKING SPACES
 - ADA RAMP
 - HEAVY DUTY ASPHALT OR CONCRETE
 - STANDARD DUTY PAVEMENT
 - SITE LIGHTING POLES
 - FIRE HYDRANT
 - WATER VALVE
 - DOWN SPOUT
 - DIRECTIONAL ARROWS
 - FLUME
 - GARAGES
 - SIDEWALK
 - DECORATIVE FENCE
 - CHAINLINK FENCE
 - COMMUNICATIONS BOX
 - ELECTRIC BOX
 - TREE TO REMAIN

SITE PLAN SECTION 4



REVISION	BY

DDG
DUPLANTIS DESIGN GROUP, PC
CIVIL ENGINEERING ARCHITECTURE
34 LOUIS PRIMA DRIVE COVINGTON, LA 70433
WWW.DDGPC.COM PHONE: 985-249-6980 FAX: 985-249-6990
THIBODAUX | COVINGTON | HOUSTON | BATON ROUGE | LOUISIANA

PROGRESS SET - FOR REVIEW ONLY
Issued 07/08/14
These documents are for Design Review and not intended for construction. Signs or on the site for the issuance of a permit. They were prepared by, or under the supervision of:
Douglas E. Barilleaux, P.E. #34541
Duplantis Design Group, PC

SPRINGS AT FREMAUX TOWN CENTER
SLIDELL, LOUISIANA
ST. TAMMANY PARISH
FOR CONTINENTAL 294 FUND LLC
MEMONEE FALLS, WI

DRAWN DGS
CHECKED DEB
ISSUED DATE 8/23/14
ISSUED FOR PERMITTING
PROJECT NO. 14-248
FILE 14-248 C-3 SITE
SHEET C-3.4

