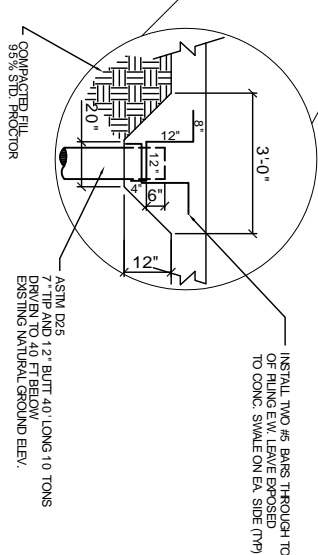
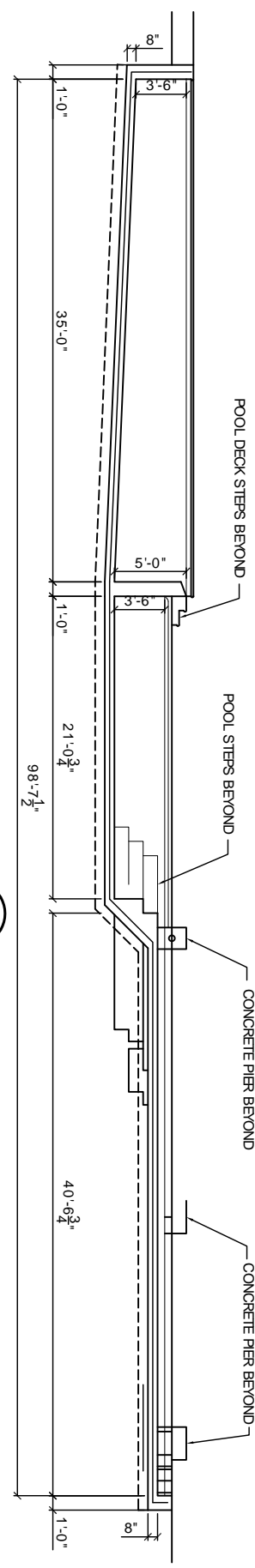


POOL PLAN
SCALE 3/16" = 1'-0"

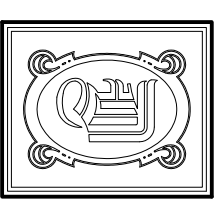


POOL SECTION
SCALE 3/16" = 1'-0"



POOL SECTION
SCALE 3/16" = 1'-0"

- NOTES:**
1. CONTRACTOR SHALL FIELD VERIFY ALL DIMENSIONS & DEPRESSIONS PRIOR TO COMMENCING WORK.
 2. FILE DATA FROM EUTIS ENGINEERING SOILS STUDY DATED 25 NOV., 2008
 3. USE TREATED SMALL TIMBER PILES, 40' LONG 10 TON CAPACITY, DRIVEN TO 40 FT BELOW EXISTING NATURAL GROUND ELEV.
 4. NO FIELD SUPERVISION OR INSPECTION PROVIDED UNDER THIS SEAL UNLESS NOTED OTHERWISE.
 5. FILE LAYOUT MAY BE MODIFIED DUE TO ACTUAL DRIVING CONDITIONS, ENGINEER TO BE NOTIFIED ON ANY OTHER MODIFICATION.
 6. A FILE BLOW/COUNT LOG OF ALL PILES IS TO BE SUBMITTED TO THE ENGINEER OF RECORD.
 7. CONTRACTOR IS RESPONSIBLE FOR THE COMPARISON AND VERIFICATION OF PILE LAYOUT DIMENSIONS WITH MOST RECENT EQUIPMENT DRAWINGS, ASSURING THAT PILES DO FALL WITHIN LIMITS OF THE DESIGN.
 8. ALL WATER (RAIN, RISING WATER, ETC.) SHALL BE DIRECTED AWAY FROM THE FOUNDATIONS DURING PREPARATION, PLACING AND CURING OF SAME POSITIVE DRAINAGE MUST BE MAINTAINED AT ALL TIMES.
 9. SEE EUTIS ENGINEERING SOIL ANALYSIS AND FOLLOW RECOMMENDATIONS OF STUDY.
 10. MONITOR VIBRATIONS AT NEARBY BUILDINGS.



DAMMON ENGINEERING, INC.
 CHIEF ENGINEER
 EMANUET DAMMON, P.E.
 CHIEF ARCHITECT
 ROBERT WILTSE

1095 FLORIDA AVENUE
 SUITE 11, LA. 70438
 OFFICE: 985-649-5832
 FAX: 985-641-5950

WEBSITE: WWW.DAMMONENGINEERING.COM
 EMAIL: DAMMONENG@DLSOUTH.NET

ARCHITECTURE
 ENGINEERING
 STUDIES
 PLANNING
 INVESTIGATION
 EXPERT WITNESS

YMCA POOL
 LOWER PLAQUEMINES
 BELLE CHASSE
 LOUISIANA

POOL PLAN
 & SECTION

REV:
SCALE: AS NOTED
JOB#:
DATE: 3-22-10
SHEET 1
S-1
OF 1