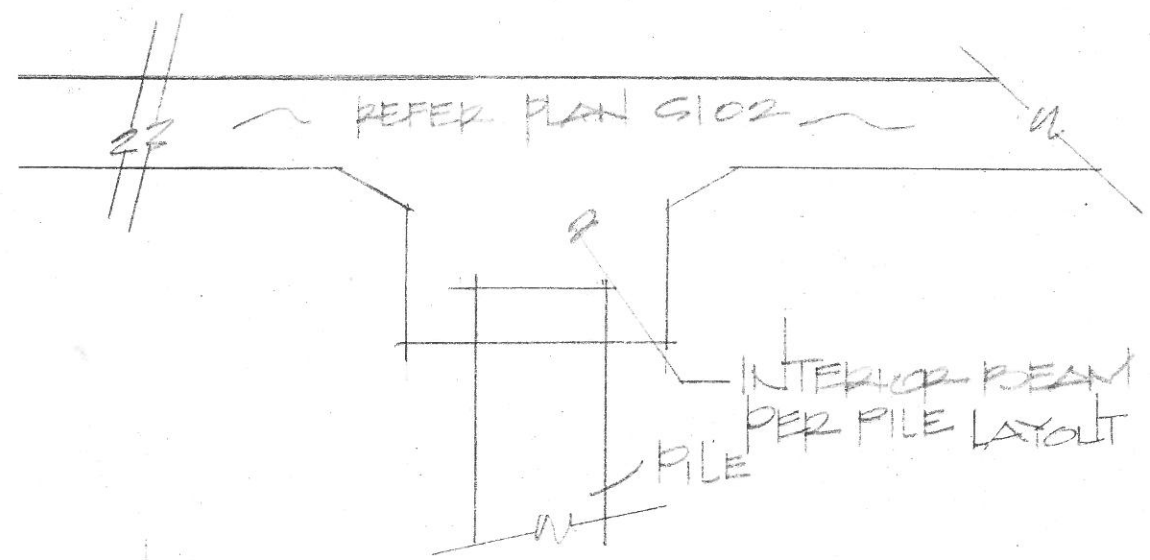


2ML 10x16x8

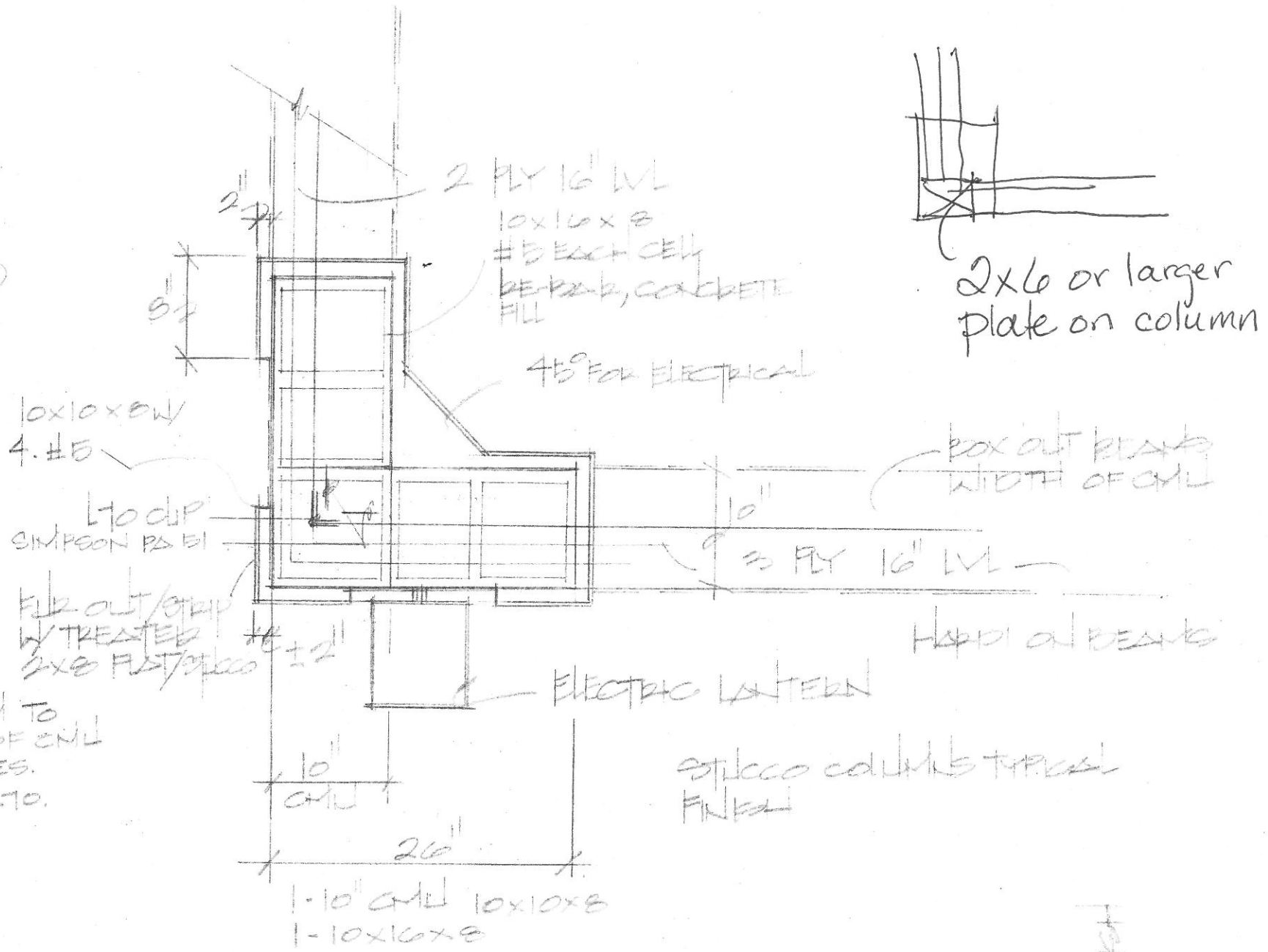
Block
FORCE w/ LADDER
ASTM (1-B2 #9 GAGE)

6x8
SLICE 30'
CELL
w/ 3000 PSI CONCRETE

NOTE:
ALL CML BLOCK SHALL CONFORM TO
ASTM C-90. ALL CONSTRUCTION OF CML
SHALL CONFORM TO BUILDING CODES.
MOTOR SHALL COMPLY w/ ASTM C270.

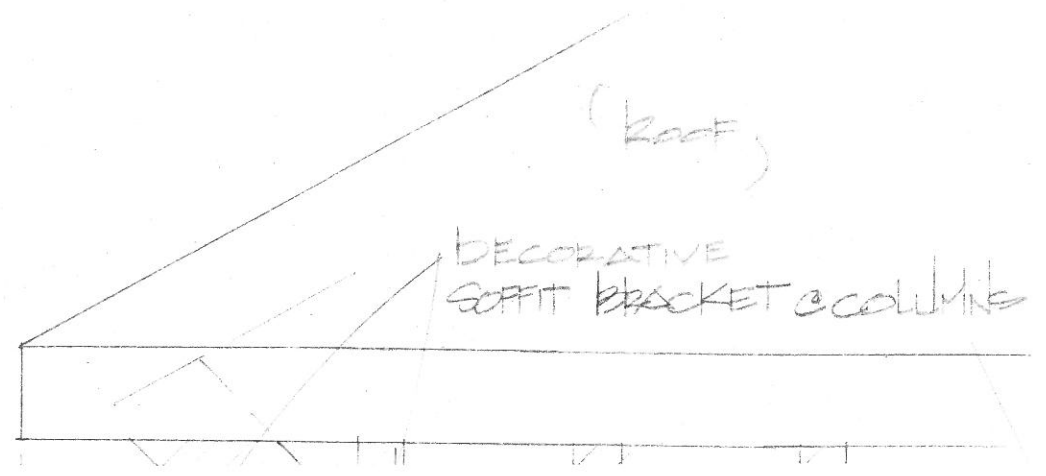


SECTION



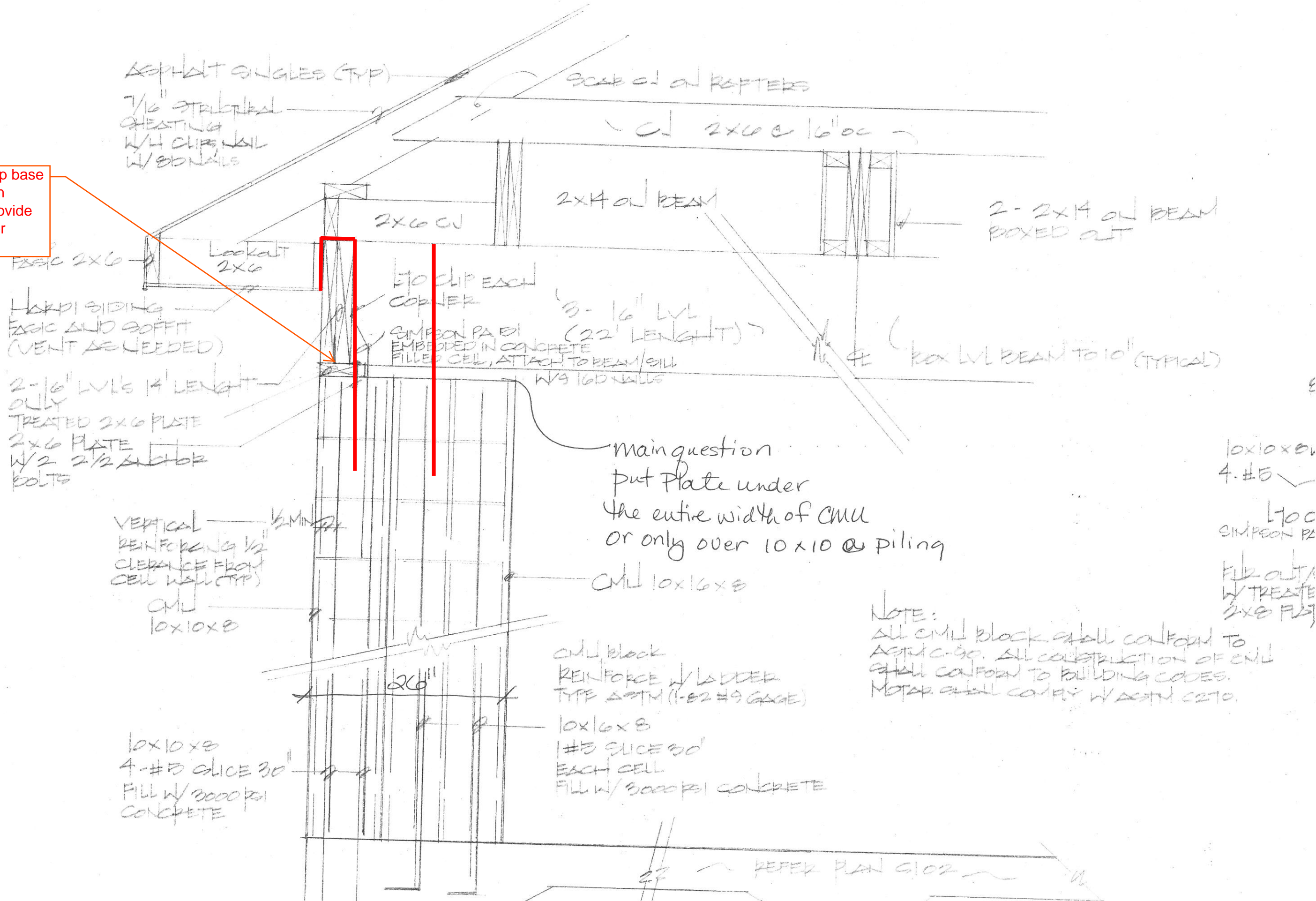
CML block PLAN VIEW

NTS



S.L.A. GET TAILOR MADE PROJECT
 BS, PHASE 2

Start and Stop base plate between strapping; Provide two straps per corner.



SECTION LEFT & RIGHT ELEVATION

LOCATE
SHALL
ADJAC

SCALE: 1/4" = 1'-0"

Scan/email
to david@dammonengineering.com

