

PROVIDE SIMPSON STRONG TIE LTS16 HURRICANE TIE @ EVERY RAFTER. CONNECT TO STUDWALL TOP PLATE

2-2x6 TOP PLATE

1x WOOD SUBFASCIA W/ ALUM. FINISH FASCIA VERIFY CODES WITH DOWNER

SOFFIT VENTS CONT. W/ 1/2" HDWR. CLOTH W/ ALUM INSECT SCREEN

HECKMANN POS-I-TIE ADJUSTABLE MASONRY ANCHOR W/ 3" STAINLESS STEEL TRIANGLE WIRE TIES @ EVERY FOURTH COURSE, 24" O.C. HORIZONTAL, ANCHOR TO FRAMING AS RECOMMENDED BY MANUFACTURER

3-5/8" BRICK VENEER W/ 2" AIR GAP OVER TYVEK COMMERCIAL WRAP OVER 1/2" WOOD SHEATHING OVER 2x6 STUDS @ 16" O.C.

2x6 BRACING @ EVERY OTHER JOIST

CONT. 2x6 STRONGBACK

2x6 CONT. CLEAT

JOIST HANGER

2x10 C.J. @ 16" O.C.

1/2" GYP. WALLBOARD FTD.

PROVIDE SIMPSON STRONG-TIE SP-2 @ EVERY STUD TO TOP PLATE CONNECTION

PROVIDE SOLID BLOCKING @ MIDPOINT OF EXTERIOR WALLS

R-19 G" BATT INSULATION @ EXTERIOR WALLS

4" CONCRETE SLAB W/ 6x1 2xO/1 WELDED WIRE FABRIC. SEE FOUNDATION PLAN FOR DETAILS

TREATED 2x6 BASE PLATE

PROVIDE 1/2"x10" A.B. @ 24" O.C. WITHIN 8' OF CORNERS & 36" O.C. THEREAFTER W/ MIN. 7" EMBEDDED IN CONCRETE, TYP. AT ALL EXTERIOR WALLS. SEE FOUNDATION PLAN FOR DETAILS

SECTION C
SCALE: 1/2" = 1'-0"

ROOF UNDERLAYMENT APPLICATION

FOR ROOF SLOPES FROM TWO UNITS VERTICAL IN 12 UNITS HORIZONTAL (17-PERCENT SLOPE), UP TO FOUR UNITS VERTICAL IN 12 UNITS HORIZ. (33-PERCENT SLOPE), UNDERLAYMENT SHALL BE TWO LAYERS APPLIED IN THE FOLLOWING MANNER:

APPLY A 19 INCH STRIP OF UNDERLAYMENT FELT PARALLEL WITH AND STARTING AT THE EAVES, FASTENED SUFFICIENTLY TO HOLD IN PLACE. STARTING AT THE EAVE, APPLY 36 INCH WIDE SHEETS OF UNDERLAYMENT, OVERLAPPING SUCCESSIVE SHEETS 19 INCHES, AND FASTENED SUFFICIENTLY TO HOLD IN PLACE. FOR ROOF SLOPES OF FOUR UNITS VERTICAL IN 12 UNITS HORIZONTAL (33-PERCENT SLOPE) OR GREATER, UNDERLAYMENT SHALL BE ONE LAYER APPLIED IN THE FOLLOWING MANNER:

UNDERLAYMENT SHALL BE APPLIED SHINGLE FASHION, PARALLEL TO AND STARTING FROM THE EAVE AND LAPPED 2 INCHES, FASTENED SUFFICIENTLY TO HOLD IN PLACE. END LAP'S SHALL BE OFFSET BY 6 FEET.

SHINGLE APPLICATION/FASTENING

ASPHALT STRIP SHINGLES SHALL HAVE A MINIMUM OF SIX FASTENERS PER SHINGLE WHERE THE ROOF IS IN ONE OF THE FOLLOWING CATEGORIES:

1. THE BASIC WIND SPEED IS 110 MPH OR GREATER AND THE EAVE IS 20 FEET OR HIGHER ABOVE GRADE.
2. THE BASIC WIND SPEED IS 120 MPH OR GREATER.
3. SPECIAL WIND ZONES.

UPLIFT CONNECTIONS

ROOF ASSEMBLY TO WALL ASSEMBLY:

UPLIFT CONNECTIONS SHALL BE FROM RAFTER OR TRUSS TO WALL STUD. WHEN RAFTERS OR TRUSSES ARE NOT LOCATED DIRECTLY ABOVE STUDS, RAFTERS SHALL BE ATTACHED TO THE WALL PLATE AND THE WALL TOP PLATE SHALL BE ATTACHED TO THE WALL STUD WITH UPLIFT CONNECTIONS. UPLIFT CONNECTIONS SHALL BE IN ACCORDANCE WITH TABLE.

WALL ASSEMBLY TO WALL ASSEMBLY:

STORY TO STORY UPLIFT CONNECTIONS FROM UPPER STORY WALL STUD TO LOWER STORY WALL STUD. WHEN UPPER STORY WALL STUDS ARE NOT LOCATED DIRECTLY ABOVE LOWER WALL STUDS, THE STUDS SHALL BE ATTACHED TO A COMMON MEMBER IN THE FLOOR ASSEMBLY BY UPLIFT CONNECTIONS. UPLIFT CONNECTIONS SHALL BE IN ACCORDANCE WITH TABLE.

WALL ASSEMBLY TO FOUNDATION:

FIRST FLOOR WALL STUDS SHALL BE CONNECTED TO THE FOUNDATION, SILL PLATE, OR BOTTOM PLATE. A MINIMUM OF A 1-1/4" x 20 GA. ASTM A653 GRADE 33 STEEL STRAP SHALL BE NAILED TO THE WALL STUDS AND HAVE A MINIMUM EMBEDMENT OF 7 INCHES IN CONCRETE FOUNDATIONS AND SLABS-ON-GRADE, 15 INCHES IN MASONRY BLOCK FOUNDATIONS, OR BE LAPPED UNDER THE BOTTOM PLATE, 3 INCH SQUARE WASHERS SHALL BE USED ON THE ANCHOR BOLTS AND ANCHOR BOLT SPACINGS SHALL NOT EXCEED THE REQUIREMENTS. STEEL STRAPS EMBEDDED IN OR IN CONTACT WITH SLAB-ON-GRADE OR MASONRY BLOCK FOUNDATIONS SHALL BE HOT-DIPPED GALV. AFTER FABRICATION, OR MANUF. FROM G185 OR 2450 GALV. STL. CONNECTIONS SHALL BE IN ACCORDANCE WITH TABLE.

HOLDDOWNS

HOLDDOWNS ARE REQUIRED AT THE END OF EACH SEGMENTED SHEARWALL SEGMENT OR AT EACH END OF A PERFORATED SHEARWALL. WHEN FULL HEIGHT SHEARWALL SEGMENTS MEET AT A CORNER, A SINGLE HOLDDOWN SHALL BE PERMITTED TO BE USED TO RESIST THE OVERTURNING FORCES IN BOTH DIRECTIONS WHEN THE CORNER FRAMING IN THE ADJOINING WALLS IS FASTENED TOGETHER TO TRANSFER THE UPLIFT LOAD. SEE CORNER HOLDDOWN DETAIL.

THERMAL COMPONENT CRITERIA (U-FACTOR AND R-VALUE)					
MAX. GLAZING U-FACTOR	MINIMUM INSULATION R-VALUE				
	CEILINGS	WALLS	FLOORS	BASEMENT WALLS	CRAWL SPACE WALLS
75	R-26	R-13	R-11	R-5	R-5

HEADER SPANS-EXPOSURE C FOR EXTERIOR LOADBEARING WALLS			
HEADER SIZE	SPAN	NO. FULL HGT. STUDS REQ. AT EA. END	
		12	24
(2)x4S	4'-7"	2	1
(2)x4S	5'-4"	2	1
(2)x4S	6'-1"	3	2
(2)x4S	6'-8"	3	2
(2)x4S	7'-5"	3	2
(2)x4S	8'-2"	3	2
(2)x4S	8'-9"	3	2
(2)x4S	9'-6"	3	2
(2)x4S	10'-3"	4	3

HEADER SPANS-FOR INT. LOADBEARING WALLS			
HEADER SUPPORTING	SIZE	BLDG. WIDTH (ft.)	
		12	36
ONE FLOOR (CENTER BEARING)	(2)x4S	4'-4"	3'-1"
	(2)x4S	5'-1"	4'-2"
	(2)x4S	5'-8"	4'-9"
	(2)x4S	6'-5"	5'-6"
	(2)x4S	7'-2"	6'-3"
	(2)x4S	7'-9"	7'-0"
	(2)x4S	8'-6"	7'-7"
	(2)x4S	9'-3"	8'-4"
	(2)x4S	10'-0"	9'-1"
	(2)x4S	10'-7"	9'-8"
2 FLOORS ONLY (CENTER BEARING)	(2)x4S	4'-4"	3'-1"
	(2)x4S	5'-1"	4'-2"
	(2)x4S	5'-8"	4'-9"
	(2)x4S	6'-5"	5'-6"
	(2)x4S	7'-2"	6'-3"
	(2)x4S	7'-9"	7'-0"
	(2)x4S	8'-6"	7'-7"
	(2)x4S	9'-3"	8'-4"
	(2)x4S	10'-0"	9'-1"
	(2)x4S	10'-7"	9'-8"

JACK STUD REQ.-EXP. B FOR EXT. LOADBEARING WALLS				
HEADER SUPPORTING	HEADER SPAN (ft.)	HEADER WIDTH		
		3"	4.5"	5" / 6.5"
ROOF AND CEILING	2	1	1	1
	4	1	1	1
	6	2	2	2
	8	2	2	2
	10	3	2	2
	12	3	2	2
	14	4	3	2
	16	4	3	2
	18	5	3	2
	20	5	3	2
ROOF, CEILING, AND 1 CENTER BEARING FL.	2	1	1	1
	4	2	1	1
	6	2	2	1
	8	3	2	2
	10	4	3	2
	12	4	3	2
	14	5	3	3
	16	5	3	3
	18	6	4	3
	20	6	4	3

WALL SHEATH. OR CLAD. REQ. FOR WIND LOAD-EXP. C			
SHEATHING LOCATION	STUD SPAC.	MAX. NAIL SPAC. FOR 8d COM. NAILS OR 10d BOX NAILS (INCHES, O.C.)	
		E	F
INTERIOR ZONE	12" O.C.	6	12
	16" O.C.	6	12
PERIMETER EDGE ZONE	12" O.C.	6	12
	24" O.C.	6	12

WINDBORNE DEBRIS PROTECTION FASTENING SCHEDULE FOR WOOD STRUCTURAL PANELS			
FASTENER TYPE	PANEL SPAN	FASTENER SPACING	
		4 FOOT PANEL SPAN ≤ 4 FOOT	6 FOOT PANEL SPAN ≤ 6 FOOT
2 1/8" x 6" WOOD SCREWS	10'	12"	9"
	14'	10"	12"

ROOF SHEATH. OR CLAD. REQ. FOR WIND LOAD-EXP. C			
SHEATHING LOCATION	RAFTER/TRUSS SPAC.	MAX. NAIL SPAC. FOR 8d COM. NAILS OR 10d BOX NAILS (INCHES, O.C.)	
		E	F
INTERIOR ZONE	12" O.C.	6	12
	16" O.C.	6	12
PERIMETER EDGE ZONE	12" O.C.	6	12
	24" O.C.	6	12

JACK STUD REQ.-EXP. B FOR EXT. LOADBEARING WALLS				
HEADER SUPPORTING	HEADER SPAN (ft.)	HEADER WIDTH		
		3"	4.5"	5" / 6.5"
ROOF AND CEILING	2	1	1	1
	4	1	1	1
	6	2	2	2
	8	2	2	2
	10	3	2	2
	12	3	2	2
	14	4	3	2
	16	4	3	2
	18	5	3	3
	20	5	3	3
ROOF, CEILING, AND 1 CENTER BEARING FL.	2	1	1	1
	4	2	1	1
	6	2	2	1
	8	3	2	2
	10	4	3	2
	12	4	3	2
	14	5	3	3
	16	5	3	3
	18	6	4	3
	20	6	4	3

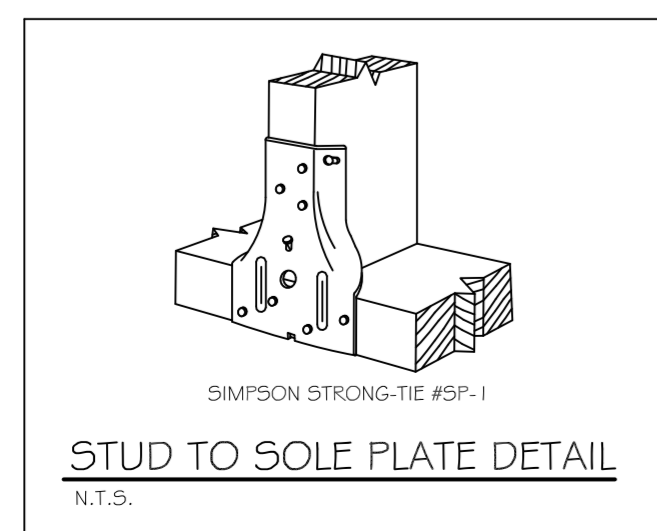
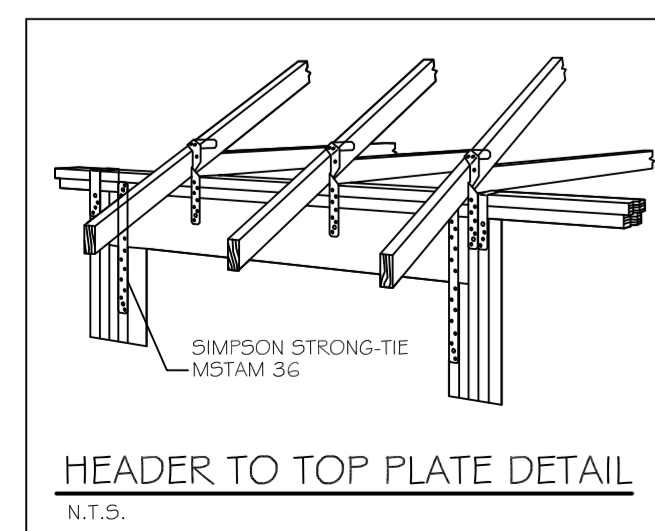
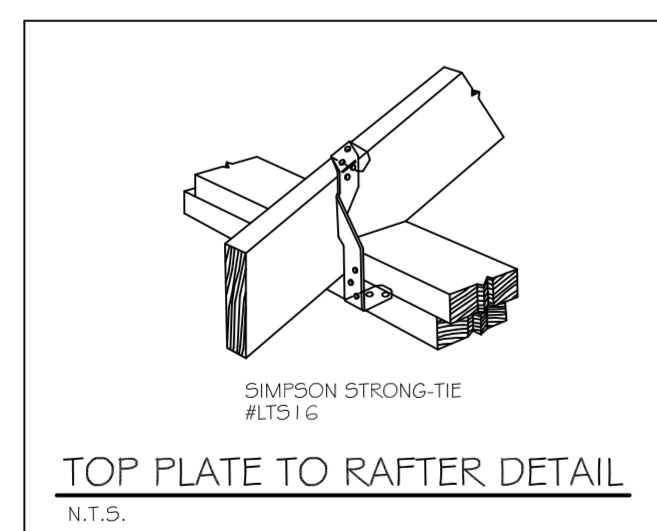
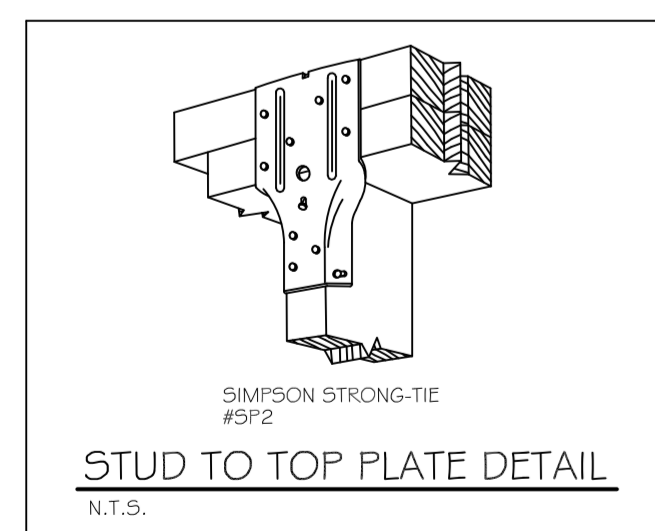
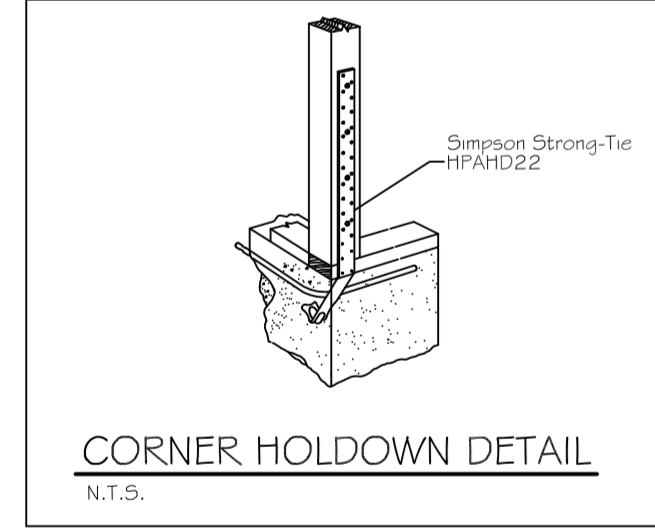
HEADER NAILING SCHEDULE			
DESCRIPTION	NUM. OF COM. NAILS	NUM. OF BOX NAILS	SPACING
HEAD TO HEAD (FACE NAILED)	8d	10d	6" O.C. EDGES/ 12" O.C. FIELD

JACK STUD REQUIREMENTS-FOR INTERIOR LOADBEARING WALLS										
HEADER SUPPORTING	HEADER SPAN (ft.)	ROOF SPAN (ft.)								
		12 FEET			24 FEET			36 FEET		
ROOF AND CEILING	2	1	1	1	1	1	1	1	1	1
	4	1	1	1	1	1	1	1	1	1
	6	1	1	1	1	1	1	1	2	1
	8	1	1	1	1	2	1	1	2	2
	10	1	1	1	2	2	1	1	3	2
	12	1	1	1	2	2	1	1	3	2
	14	2	1	1	3	2	2	2	4	3
	16	2	1	1	3	2	2	2	4	3
	18	2	1	1	3	2	2	2	4	3
	20	2	1	1	3	2	2	2	4	3
ROOF, CEILING, AND 1 CENTER BEARING FL.	2	1	1	1	1	1	1	1	1	1
	4	1	1	1	2	1	1	3	2	2
	6	2	1	1	3	2	2	2	4	3
	8	2	1	1	3	2	2	2	5	3
	10	2	2	2	4	3	2	2	6	4
	12	3	2	2	5	3	3	3	7	4
	14	3	2	2	5	4	3	3	8	5
	16	4	3	2	6	4	4	3	9	6
	18	4	3	2	6	4	4	3	9	6
	20	4	3	2	6	4	4	3	9	6

SILL or BOTTOM PLATE TO FND. CONNECTIONS RESISTING UPLIFT LOADS-130MPH WINDS EXP. "C"			
UPLIFT LOADS	FOUNDATION SUPPORTING	MAX. ANCHOR BOLT SPACING (in.)	
		8" END ZONES	INTERIOR ZONES
1-3 STORES	1-3 STORES	25	33

SILL or BOTTOM PLATE TO FND. CONNECTIONS RESISTING SHEAR LOADS-130MPH WINDS EXP. "C"			
SHEAR LOADS	FOUNDATION SUPPORTING	MAX. ANCHOR BOLT SPACING (in.)	
		1/2" ANC. BOLTS	5/8" ANC. BOLTS
1-3 STORES	1-3 STORES	30	45

UPLIFT CONNECTIONS-130MPH WINDS EXP. "C"						
CONNECTION	FRAMING (in.)	ROOF SPAN (ft.)	U			NUM. OF 8d COM. NAILS OR 10d BOX NAILS IN EA. END OF 1-1/4"x20 GA. STRAP
			J	L	S	
ROOF ASSEMBLY TO WALL ASSEMBLY	16" O.C.	17	386	246	109R	4
WALL ASSEMBLY TO WALL ASSEMBLY	16" O.C.	17	386	246	109R	4
WALL ASSEMBLY TO FOUNDATION	16" O.C.	17	170	185	436	4



PAUL WRIGHT
ADDITION TO EXISTING RESIDENCE
67111 LOUISIANA HWY 343
LACOMBE, LA 70135

DATE: 06-06-2013
CHECKED BY: BSN

JOB No: 2147
DRAWN BY: BSN

#	DESCRIPTION	DATE

REVISIONS

BUILDING SECTION

SHEET No: 08 OF 12

A-6

DAMMON ENGINEERING, INC.
Architects & Engineers

10000 Highway 101, Suite 100
Metairie, LA 70002
PHONE: 985-649-5932
FAX: 985-641-5950

CHIEF ENGINEER: BRADLET DAMMON, P.E.
CHIEF ARCHITECT: KEVIN KIRCHEN
554 OLD SPANISH TRAIL
SUITE 100
SUDELL, LA 70455