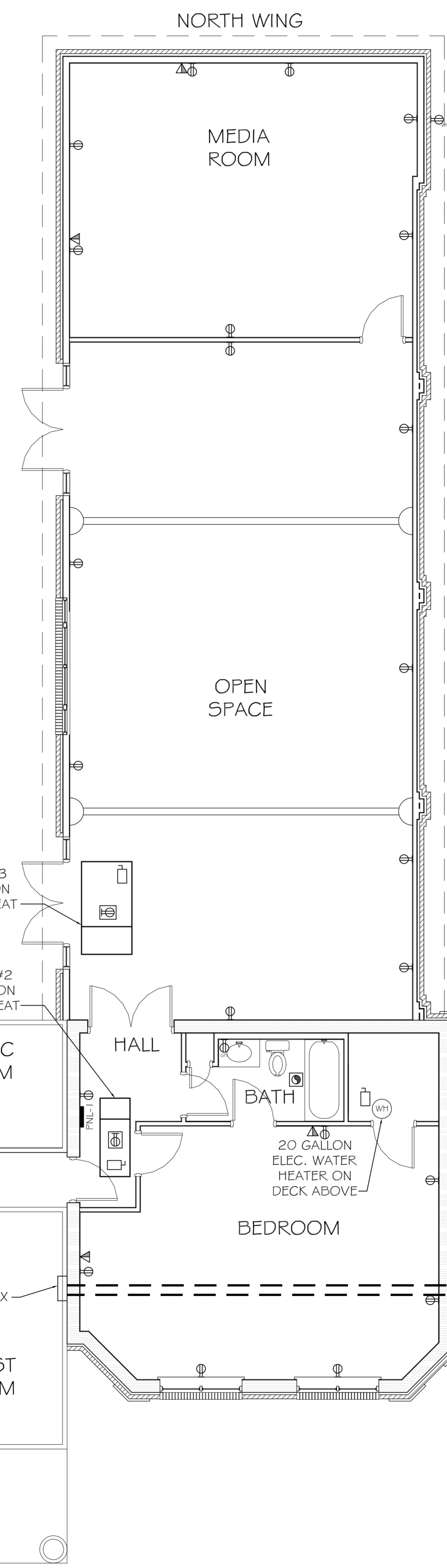


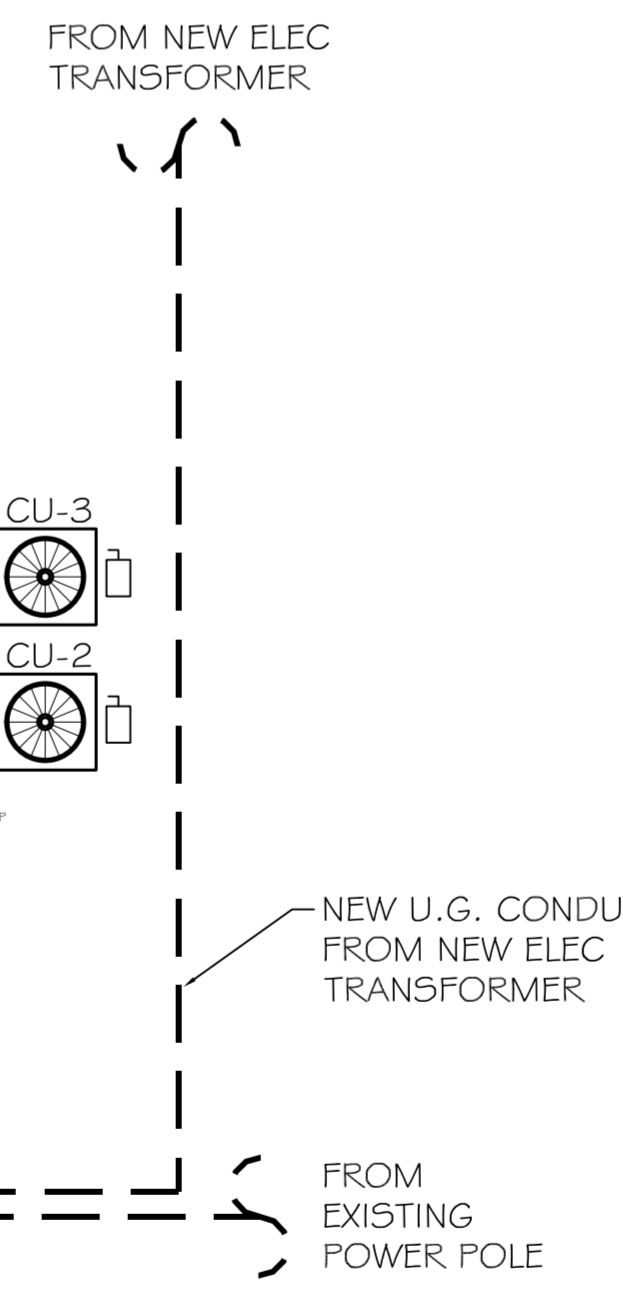
POWER PLAN LEGEND		
SYM.	DESCRIPTION	COMMENTS
	STANDARD 120V DUPLEX RECEPTACLE @ 18" AFF (UNLESS NOTED)	
	DEDICATED RECEPTACLE SEE PANEL SCHEDULE FOR CIRCUIT SIZE	
	GFI RECEPTACLE	ALL OUTLETS WITHIN 48" OF A WATER SOURCE SHALL BE GFI
	WEATHER PROOF 120V DUPLEX RECEPT. @ 30" AFF (UNLESS NOTED)	
	RECEPTACLE @ 6" ABOVE COUNTER	
	STANDARD 120V QUAD RECEPTACLE @ 18" AFF (UNLESS NOTED)	
	STANDARD 120V DUPLEX RECEPTACLE ABOVE DECK	
	QUAD CAT. 5 JACK WITH FACEPLATE NETWORKING AND CABLE CONNECTION	
	POWER DISCONNECT	
	ELECTRIC WATER HEATER SIZE AS NOTED	
	AIR CONDITIONING COND. UNIT SEE MECH SHEETS FOR UNIT DETAILS	

NOTES:
1. CONNECT ALL EMERGENCY / EXIT LIGHT FIXTURES TO NEAREST CONSTANT POWER SOURCE.



ELECTRICAL PLAN NOTES

- DRAWINGS ARE DIAGRAMMATIC ONLY. FURNISH ALL CONDUIT, WIRING, PANELS, BREAKERS, DISCONNECTS, ACCESSORIES, ETC. FOR COMPLETE INSTALLATION RATHER OR NOT EVERY ITEM IS SHOWN OR SPECIFIED.
- THESE DRAWINGS ARE INTENDED AS GENERAL GUIDELINES FOR PURPOSES OF ESTABLISHING CERTAIN MIN. CRITERIA, AND DO NOT NECESSARILY REPRESENT THE FINAL LAYOUT, ARRANGEMENT, SIZE, BRAND NAME, CAPACITY OR OTHER CHARACTERISTICS OF THE ENGINEERED SYSTEM. SYSTEM SHALL BE DESIGNED IN ACCORDANCE WITH ALL APPLICABLE CODES, STANDARDS AND REQUIREMENTS OF LOCAL UTILITY OFFICIALS.
- INSTALL GFCI OUTLETS AS REQUIRED BY APPLICABLE CODES.
- INSTALL HARDWIRED SMOKE DETECTORS WITH BATTERY BACKUP ON ALL FLOORS. INTERCONNECT DETECTORS SO THAT ALL WILL SOUND SHOULD ONE DETECTOR ACTIVATE.
- SOME EQUIPMENT SHOWN ON OTHER PLANS MAY REQUIRE ELECTRICAL SERVICE, AS WATER HEATER, CONDENSING UNITS, AIR-HANDLING UNITS, CONDENSATE PUMPS, ELECTRICAL CONTRACTOR SHALL INCLUDE ELECTRICAL SERVICE TO ALL SUCH EQUIPMENT. COORDINATE WITH OTHER TRADES CONCERNING CONCERNING ITEMS REQUIRING ELECTRICAL SERVICE. PROVIDE ONE DUPLEX OUTLET AND LIGHT IF UNIT IS IN NON-LIT AREA FOR EVERY CONDENSING UNIT AND EVERY AIR-HANDLING UNIT AS REQUIRED BY APPLICABLE CODES. OUTLETS SHALL BE WEATHERPROOF GFCI IF UNIT IS EXPOSED TO WEATHER.
- OBTAIN NAME PLATE AND RATING OF ALL EQUIPMENT BEFORE ROUGHING IN AND PROVIDE WIRING OF PROPER SIZE, VOLTAGE, AND AMPACITY. PROVIDE FUSED OR NON-FUSED DISCONNECT SWITCH AS REQUIRED.
- PROVIDE PANEL BOARDS OF PROPER VOLTAGE AND AMPACITY FOR ALL ELECTRICAL CIRCUITS. MORE THAN ONE PANEL MAY BE REQUIRED DUE TO NUMBER OF CIRCUITS REQUIRED.
- VERIFY SERVICE REQUIREMENTS WITH LOCAL POWER COMPANY INCLUDING TRANSFORMER LOCATIONS AND TYPES, DISCONNECTS AT EXTERIOR OF BLDG., VOLTS AND APACITIES AND OTHER DETAILS OF ELECTRICAL CONSTRUCTION. SIZE ALL FEEDERS ACCORDING TO NEC REQUIREMENTS.
- RUN ALL CABLE CONCEALED IN WALLS, CEILINGS OR FLOORS UNLESS NOTED OTHERWISE.
- SUPPORT ALL FIXTURES AND OTHER ITEMS RIGIDLY FROM STRUCTURE.
- INSULATE AND SEAL SOLIDLY BEHIND RECEPTACLES IN EXTERIOR WALLS.
- ALL SWITCHES AND OUTLETS ON FIRST FLOOR TO BE 1'-0" ABOVE BASE FLOOD ELEVATION.
- INSTALL GROUND FAULT RECEPTACLES AT RECEPTACLE LOCATIONS WITHIN 5' OF SINKS OR LAVATORIES, AND AT EXTERIOR LOCATIONS. EXTERIOR RECEPTACLES SHALL ALSO BE WEATHERPROOF.
- WHERE MORE THAN ONE SWITCH OCCURS IN THE SAME LOCATION, THEY SHALL BE INSTALLED IN A GANG-TYPE BOX UNDER ONE COVER PLATE.



POWER PLAN
SCALE: 3/16" = 1'-0"

PAUL WRIGHT
ADDITION TO EXISTING RESIDENCE
67111 LOUISIANA HWY 343
LACOMBE, LA 70135

DAMMON
ENGINEERING, INC.
Architects & Engineers

ADMINISTRATIVE: cpm
dammon@deloitte.com
PHONE: 985-649-5932
FAX: 985-641-5950

JOB No: 2147 DATE: 06-06-2013

CHEF ENGINEER: BRADY DAMMON, P.E.
CHIEF ARCHITECT: KEVIN KINGHEN
554 OLD SPANISH TRAIL
SUDELL, LA 70455

DRAWN BY: BSN CHECKED BY: BSN

#	DESCRIPTION	DATE

POWER PLAN

SHEET No: 10 OF 12

E-1