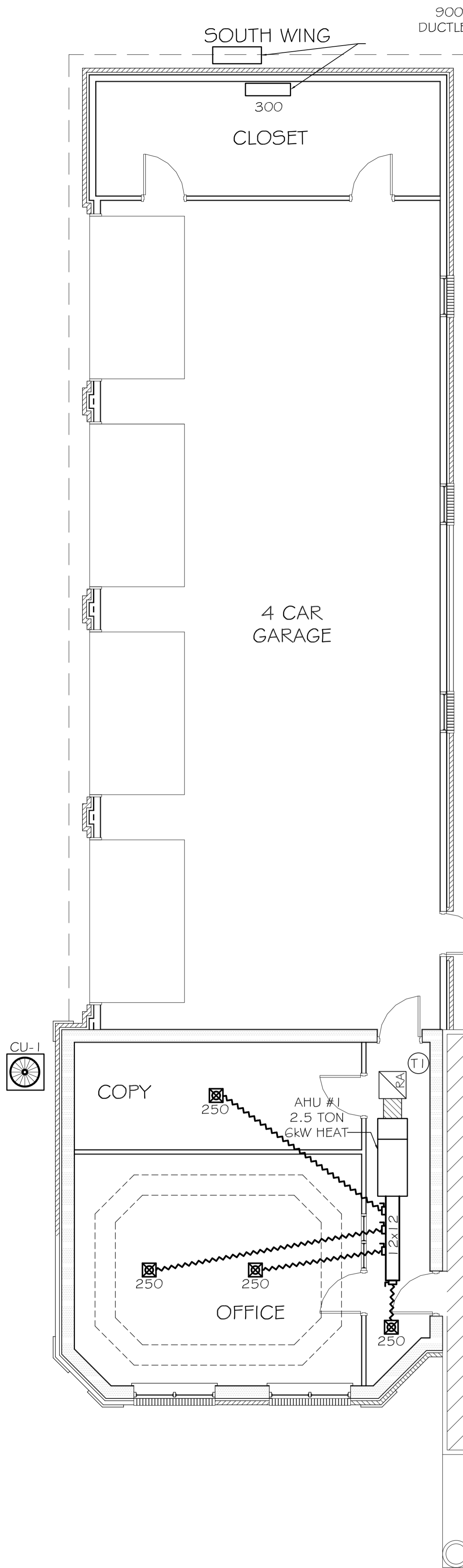
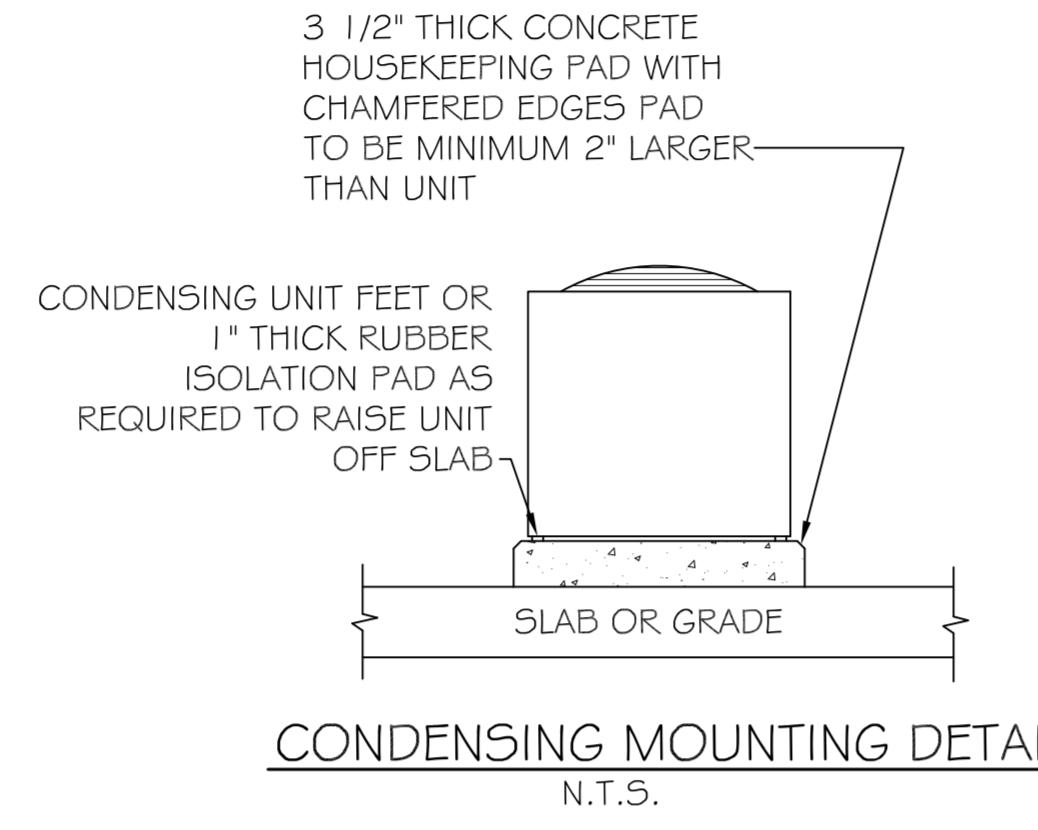


9000 BTU/HR
DUCTLESS SYSTEM

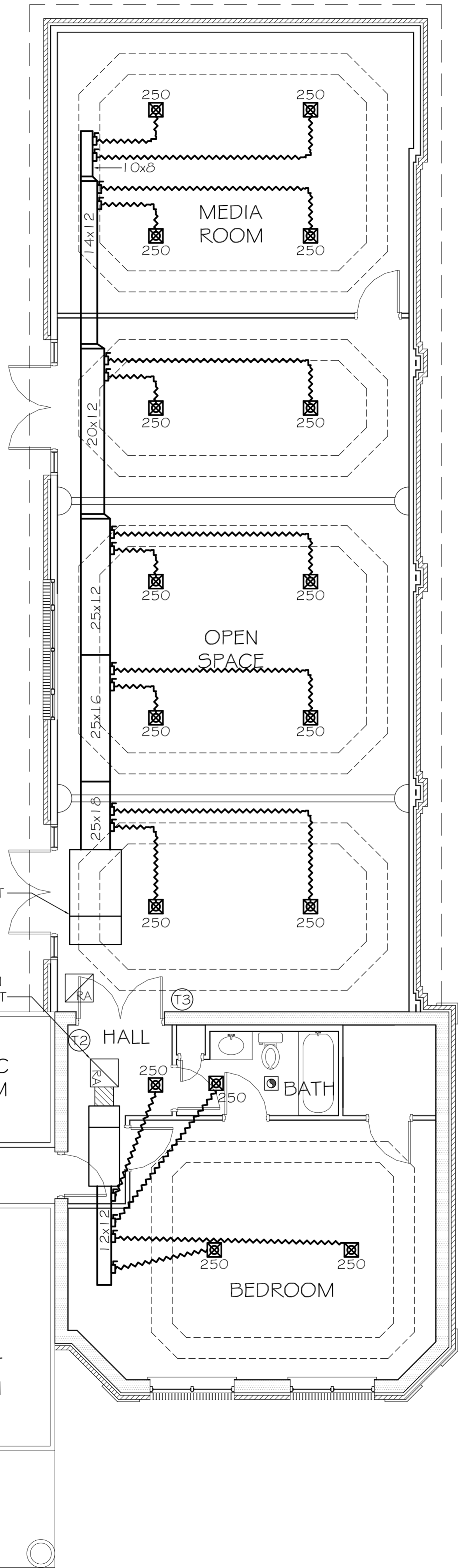


LEGEND

- ☒ - INDICATES NEW CEILING DIFFUSER - CFM AS NOTED - 12x12 UNLESS OTHERWISE NOTED
- ☒ - INDICATES NEW 24x24 RETURN AIR CEILING GRILLE. TRANSFER DUCT TO BE RECTANGULAR AS INDICATED
- ⊖ - MECHANICAL EXHAUST VENT
- Ⓣ - DIGITAL THERMOSTAT
- ☉ - CONDENSOR UNIT
- (solid line) - INDICATES NEW SHEET METAL DUCTWORK FOR SUPPLY AIR, SIZES INDICATED ARE SHEET METAL DIMENSIONS
- (hatched line) - INDICATES NEW SHEET METAL DUCTWORK FOR RETURN AIR, SIZES INDICATED ARE SHEET METAL DIMENSIONS
- (wavy line) - ROUND FLEX DUCT, MAX. LENGTH 14'-0", MIN. R-G PROVIDE MAN. DAMPER AT DIFFUSER CONNECTIONS, SIZE AS INDICATED OR: 0-200 CFM, USE 6"Ø; 201-300 CFM, USE 8"Ø; 301-400 CFM, USE 9"Ø

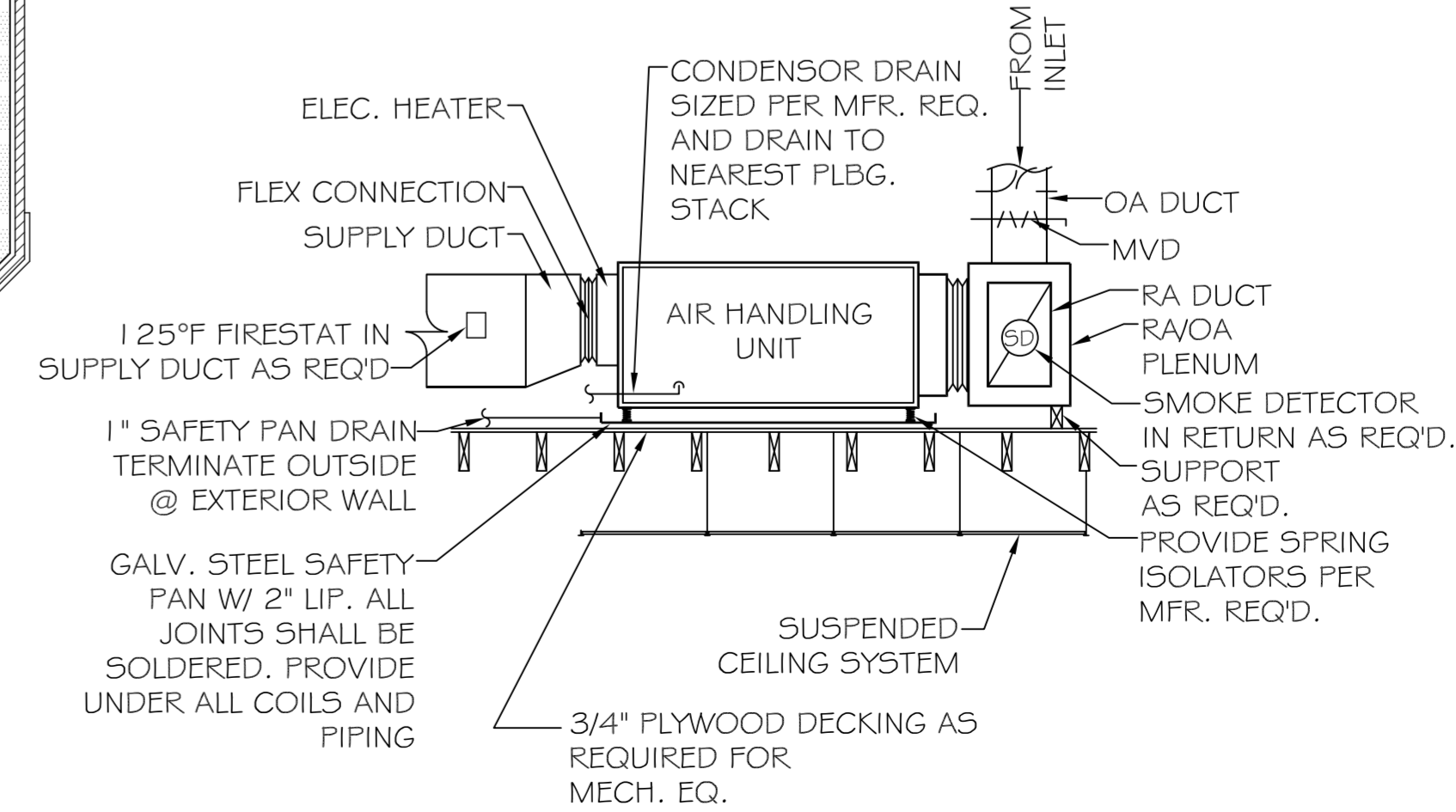
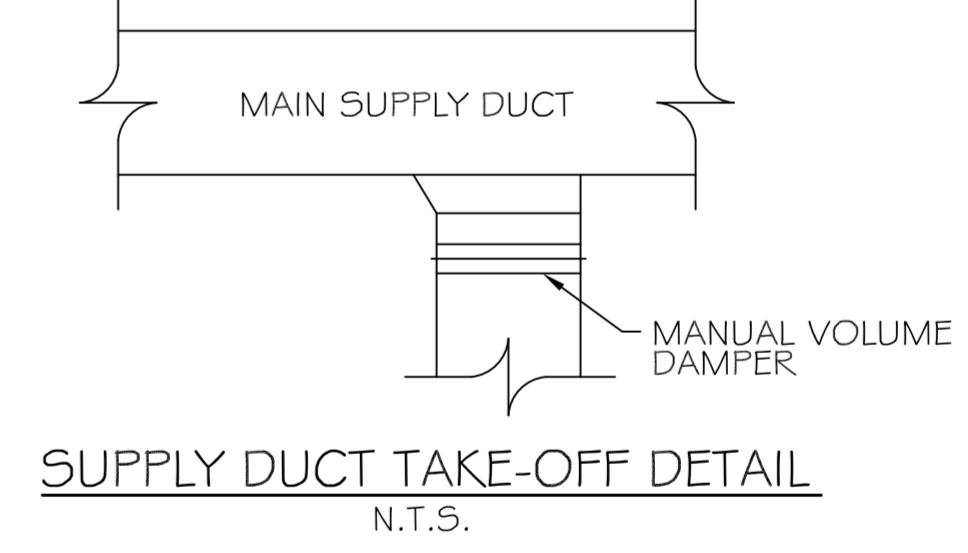
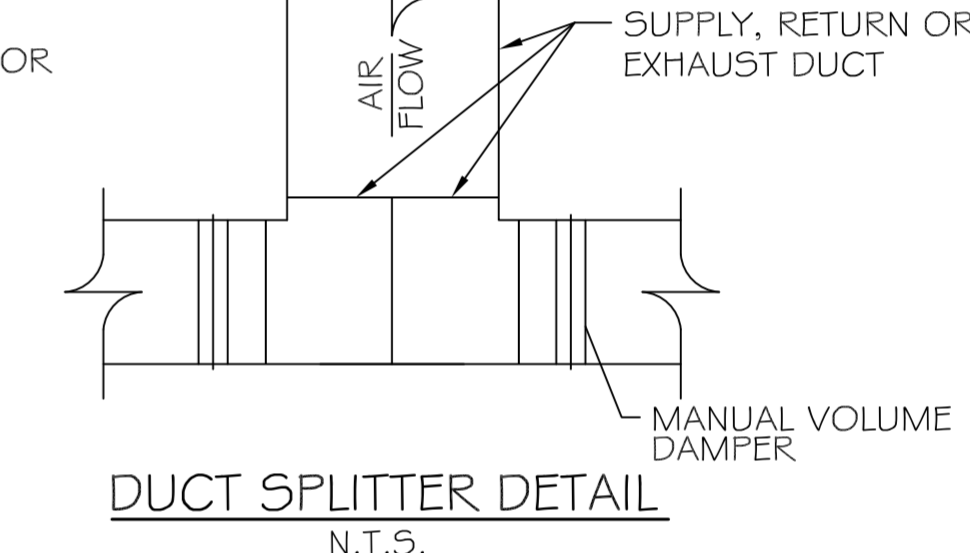
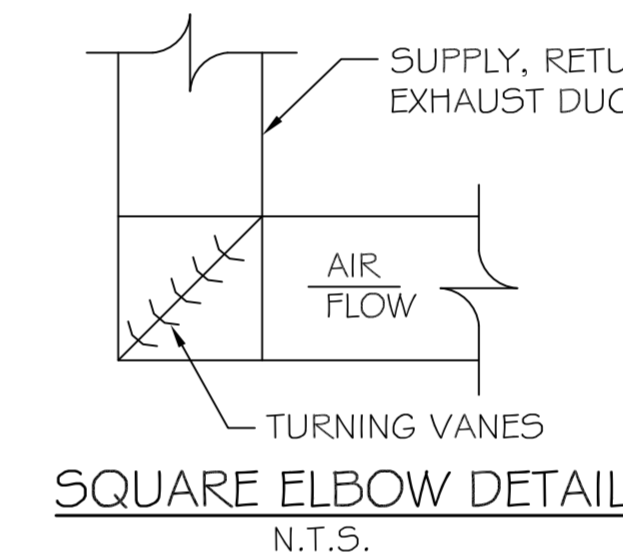


NORTH WING



MECHANICAL NOTES

1. SYSTEM SHALL BE DESIGNED IN ACCORDANCE WITH ALL APPLICABLE CODES, STANDARDS, AND REQUIREMENTS OF LOCAL UTILITY OFFICIALS. DESIGN ENGINEER SHALL PREPARE CALCULATIONS FOR EQUIPMENT SIZING, DUCT SIZING, ACCESSORY ARRANGEMENT, ETC., AND SHALL PREPARE FINAL DRAWING ACCORDINGLY.
2. FURNISH ALL DUCT WORK, CONTROL WIRING, PIPING, FITTINGS, ACCESSORIES, ETC., FOR COMPOSITE INSTALLATION.
3. INSULATE ALL HEATING OR CONDENSOR WATERLINES IN UN-INSULATED SPACES WITH TUBULAR FOAM INSULATION. INSULATION SHALL BE OF SELF SEALING TYPE OR SHALL BE TAPED CLOSED W/FOIL FACED TYPE.
4. CLOSELY COORDINATE WORK WITH ALL OTHER TRADES. MAINTAIN CEILING HEIGHTS AND DUCT SPACES PROVIDED.
5. ALL VALVES, DAMPERS AND OTHER CONTROL DEVICES SHALL BE ACCESSIBLE FOR OPERATION AND MAINTENANCE THROUGH ACCESSIBLE CEILINGS OR THROUGH ACCESS DOORS OR PANELS MANUFACTURED FOR SUCH PURPOSES.
6. ALL UNITS ABOVE CEILING SHALL HAVE AUXILIARY DRAIN PANS INSTALLED BELOW ENTIRE UNIT.
7. IF GAS IS BEING USED, PROVIDE PRESSURE REGULATORS FOR ALL GAS EQUIPMENT AS REQUIRED FOR PROPER OPERATION. VERIFY GAS PRESSURE AT METER TO DETERMINE NECESSITY OR REGULATORS.
8. COORDINATE WITH ELECTRICIAN CONCERNING ITEMS REQUIRING ELECTRICAL SERVICE SUCH AS CONDENSING UNITS, AIR-HANDLING UNITS, CONDENSATE PUMPS, MOTORIZED DAMPERS, ETC. COORDINATE SERVICE AND AMPACITY REQUIRED.
9. THE BUILDER SHALL TEST PRESSURE-REDUCING VALVES, T&P RELIEF VALVE AND OTHER SAFETY DEVICES PRIOR TO OPERATING SYSTEM. THE BUILDER SHALL TEST AND BALANCE ALL SYSTEMS PRIOR TO COMPLETION OF THE WORK.



MECHANICAL PLAN
SCALE: 3/16" = 1'-0"

PAUL WRIGHT ARCHITECTS
 ADDITION TO EXISTING RESIDENCE
 67111 LOUISIANA HWY 343
 LACOMBE, LA 70135

PRICE DAMMON ENGINEERING, INC.
 Architects & Engineers
 554 OLD SPANISH TRAIL
 SUITE 100
 SUDELL, LA 70455
 PHONE: 985-649-5432
 FAX: 985-641-5950

JOB No: 2147 DATE: 06-06-2013
 DRAWN BY: BSN CHECKED BY: BSN

#	DESCRIPTION	DATE

MECHANICAL PLAN
 SHEET No: 09 OF 12
M-1