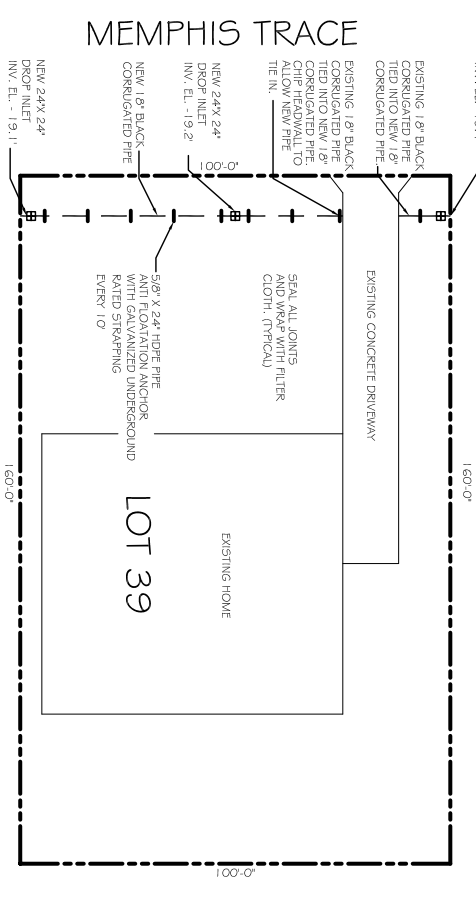


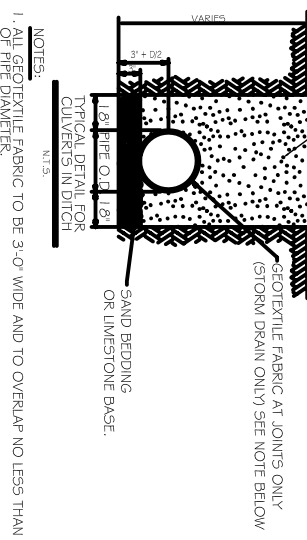
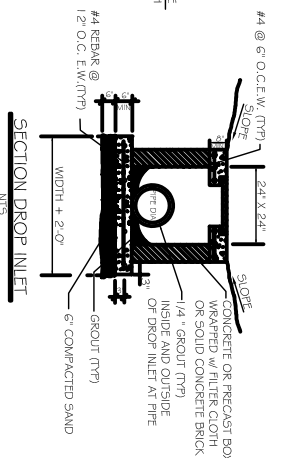
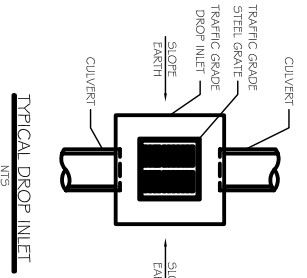
EXISTING SITE DRAINAGE PLAN
SCALE: 1"=20'-0"



VICINITY SITE MAP
SCALE: N.T.S.



NEW SITE DRAINAGE PLAN
SCALE: 1"=20'-0"



NOTES:
1. 0.1% SLOPE DRAINAGE
2. ADDITIONAL BEDDING MATERIAL MAY BE REQUIRED AS DIRECTED BY THE FIELD ENGINEER.

GRANULAR BACKFILL IN 6" LAYERS @ 95% STD. PROCTOR OR TO SATISFACTION OF ENGINEERING FIELD REP. AND SOD.

GEOTEXTILE FABRIC AT JOINTS ONLY (STORM DRAIN ONLY) SEE NOTE BELOW

SAND BEDDING OR LIMESTONE BASE.

SHEET TITLE: NEW DRAINAGE PLAN		DRAWING NUMBER: c100	
JOB No:	6302015	DATE:	
DRAWN BY:	JL	CHECKED BY:	CKD

REVISIONS		
#	DESCRIPTION	DATE

DAMMON
ENGINEERING, INC.
Architects & Engineers

Chief Architect: Kevin J. Kinchen, NCARB
Chief Engineer: Brian Mstich, PE
554 Old Spanish Trail
Slidell, LA 70458

www.dammonengineering.com
info@dammonengineering.com
PH: 985.649.5832
F: 985.641.5950