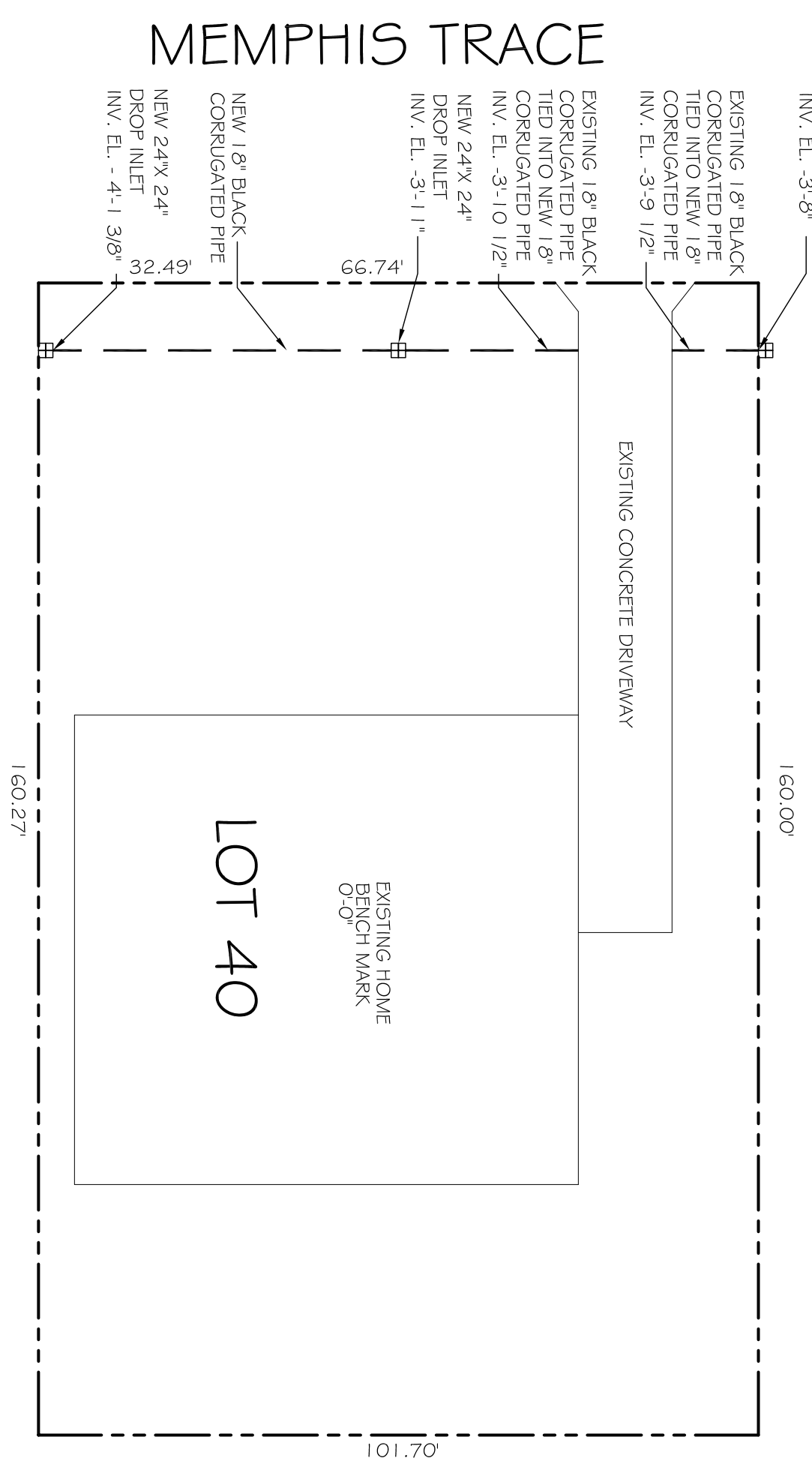
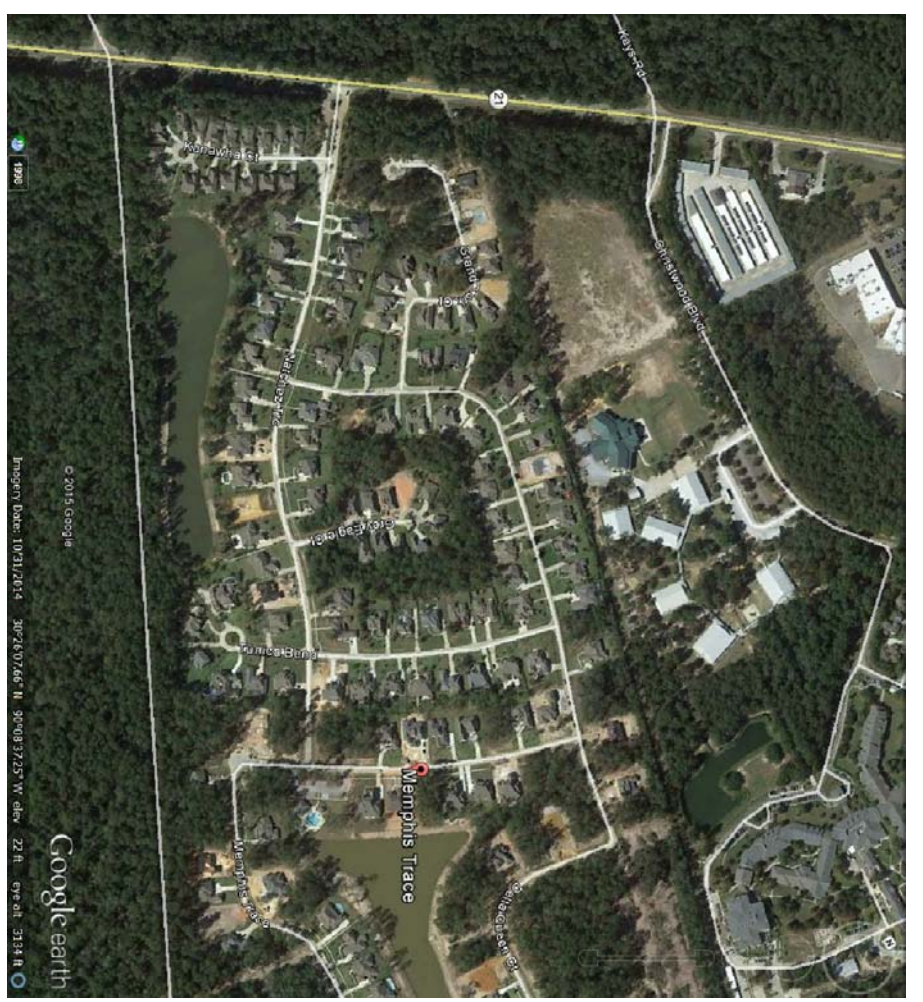


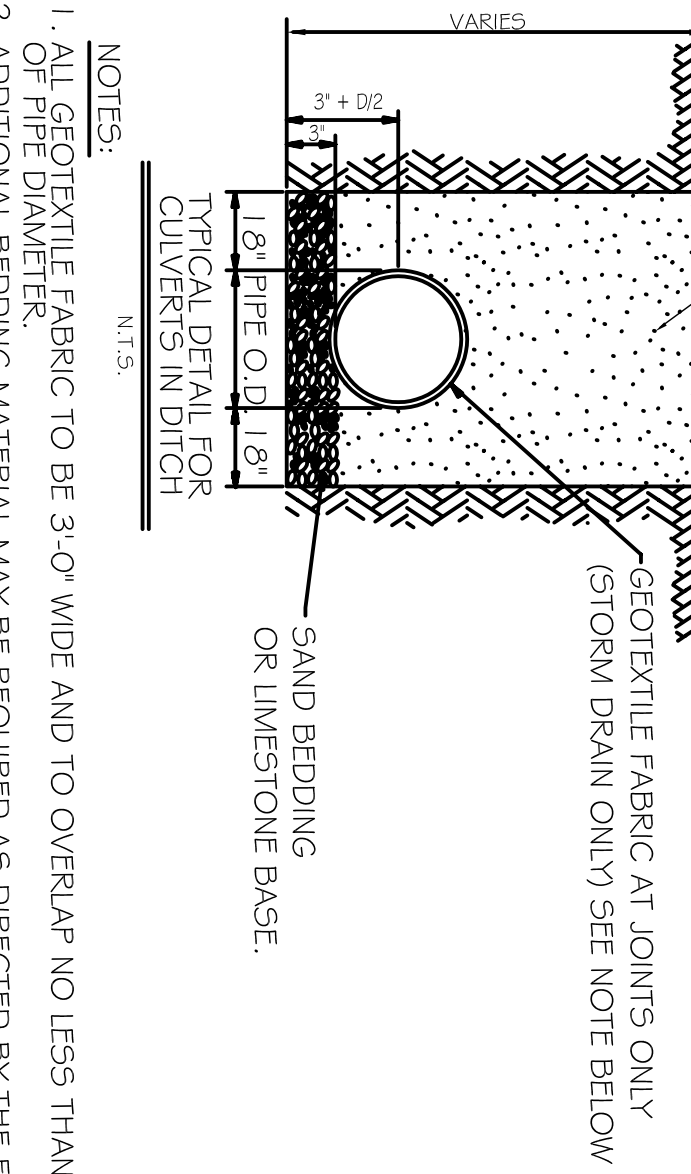
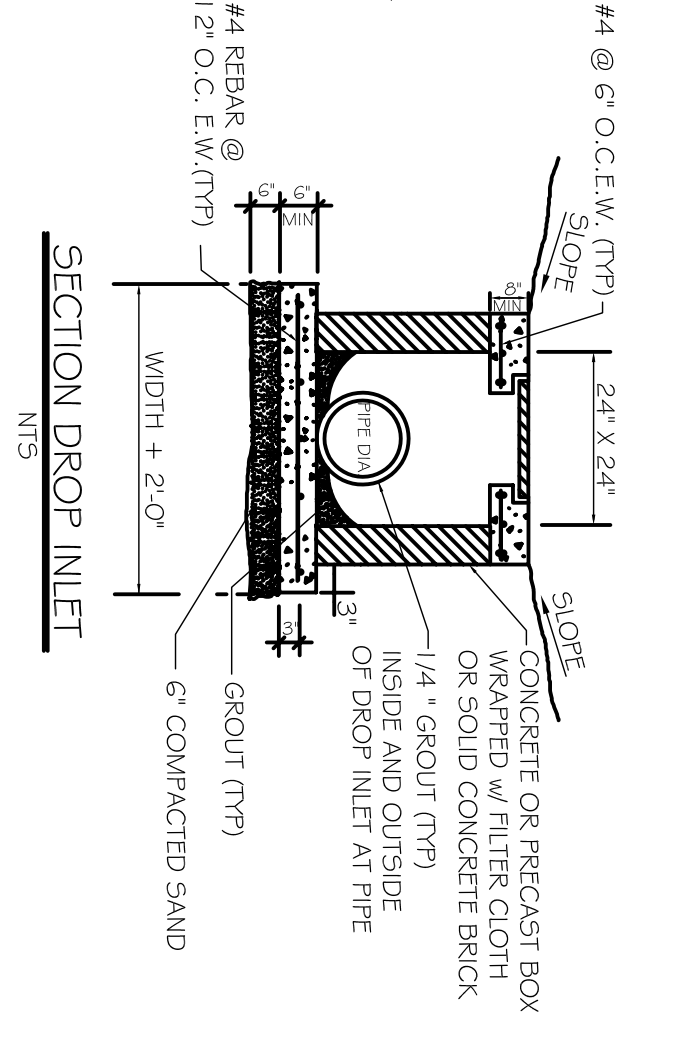
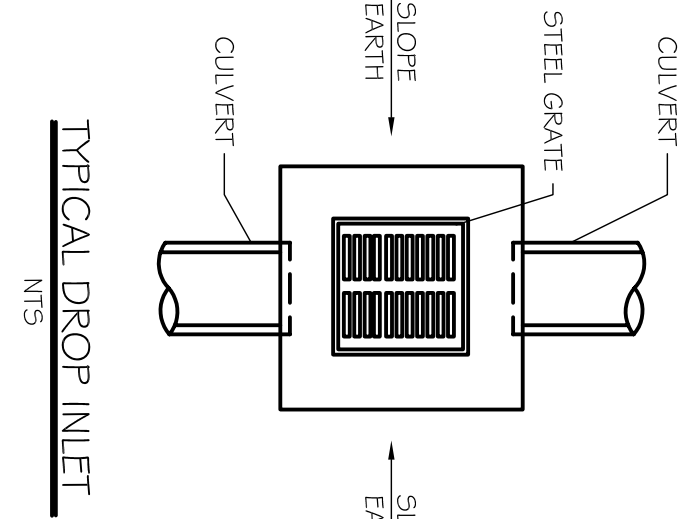
EXISTING SITE DRAINAGE PLAN
SCALE: 1"=20'-0"



NEW SITE DRAINAGE PLAN
SCALE: 1"=20'-0"



VICINITY SITE MAP
SCALE: N.T.S.



- NOTES:
1. ALL GEOTEXTILE FABRIC TO BE 3'-0" WIDE AND TO OVERLAP NO LESS THAN 1/2 OF PIPE DIAMETER.
2. ADDITIONAL BEDDING MATERIAL MAY BE REQUIRED AS DIRECTED BY THE FIELD ENGINEER.

LEGEND
--- PROPERTY LINE
- - - NEW 24" X 24" DROP INLET
- - - NEW 18" BLACK CORRUGATED CULVERT

GRANULAR BACKFILL IN 6" LAYERS @ 95% STD. PROCTOR OR TO SATISFACTION OF ENGINEERING FIELD REP. AND SOD.

GEOTEXTILE FABRIC AT JOINTS ONLY (STORM DRAIN ONLY) SEE NOTE BELOW

SAND BEDDING OR LIMESTONE BASE.

SHEET TITLE: NEW DRAINAGE PLAN		JOB No: 16302015 DATE: 7-7-15	
DRAWING NUMBER: C100		DRAWN BY: CKD CHECKED BY: BAM	
SHEET No: 1 of 1		<p>The above drawings and specifications, designs and arrangements, represented hereby and not shall ensure the property of Dammon Engineering, and no part thereof shall be copied, reproduced, altered, or used in connection with any work or project other than the specific project for which the same were prepared and designed, without written consent of Dammon Engineering. These drawings shall remain the property of Dammon Engineering and no reproduction or specification shall constitute acceptance or approval of these drawings.</p>	

REVISIONS		
#	DESCRIPTION	DATE

DAMMON
ENGINEERING, INC.
Architects & Engineers

Chief Architect: Kevin J. Kinchen, NCARB
Chief Engineer: Brian Mistich, PE
554 Old Spanish Trail
Stidell, LA 70458

www.dammonengineering.com
info@dammonengineering.com
PH: 985.649.5832
F: 985.641.5950