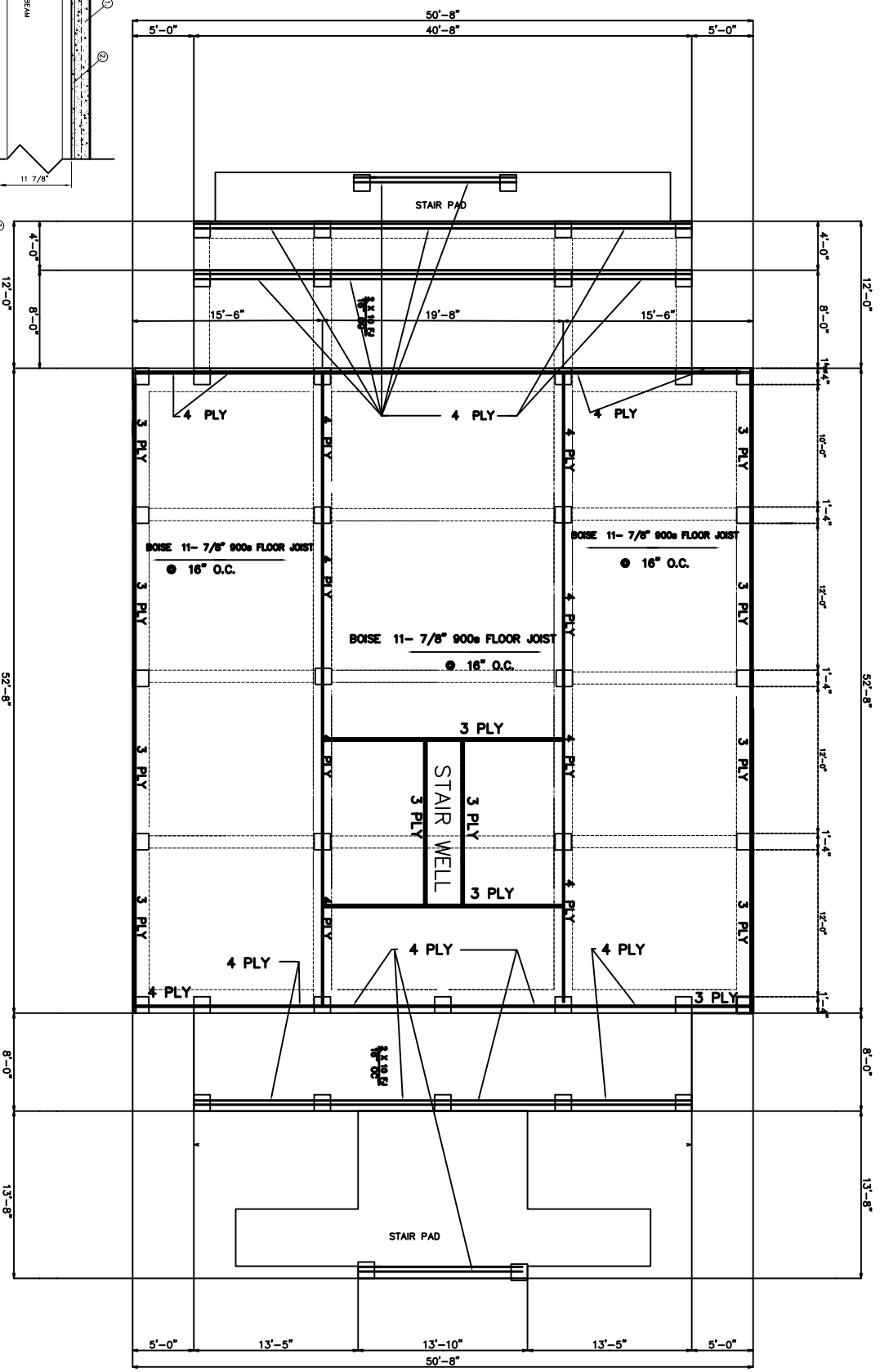


1. CONCRETE-
2. 3/4" TAG EXTERIOR GRADE PLYWOOD.
3. SCREW & GLUE TO TRUSSES
4. 1/2" O/P BOARD
5. 1/2" EXTERIOR GRADE PLYBOARD

# MAIN FLOOR FRAMING PLAN AND COLUMN LAYOUT



**BEAM NOTES**  
 1. BEAMS SHALL BE BOISE  
 KERSA-LAM, 11 7/8" HIGH. SEE  
 DWG. FOR NO. OF PLS.