

TABLE S107.7 - UPLIFT CONNECTIONS - 130 MPH WINDS EXP "C"
MFCM 2015 TABLE 9.2

CONNECTION	FRAMING SPACING (INCHES)	ROOF SPAN (FEET)	UPLIFT	LATERAL	SHEAR	NUMBER OF BD COMMON NAILS OR 10d BOX NAILS IN EACH END OF 1-1/4"X20 GAGE STRAP
ROOF ASSEMBLY TO WALL ASSEMBLY	16" OC	16	40T	25Z	159R	4
WALL ASSEMBLY TO FOUNDATION	16" OC	16	224	219	496	4

TABLE S107.8 - SILL OR BOTTOM PLATE TO FOUNDATION CONNECTIONS RESISTING UPLIFT LOADS - 130 MPH WIND EXP "C"
MFCM 2015 TABLE 9.2C

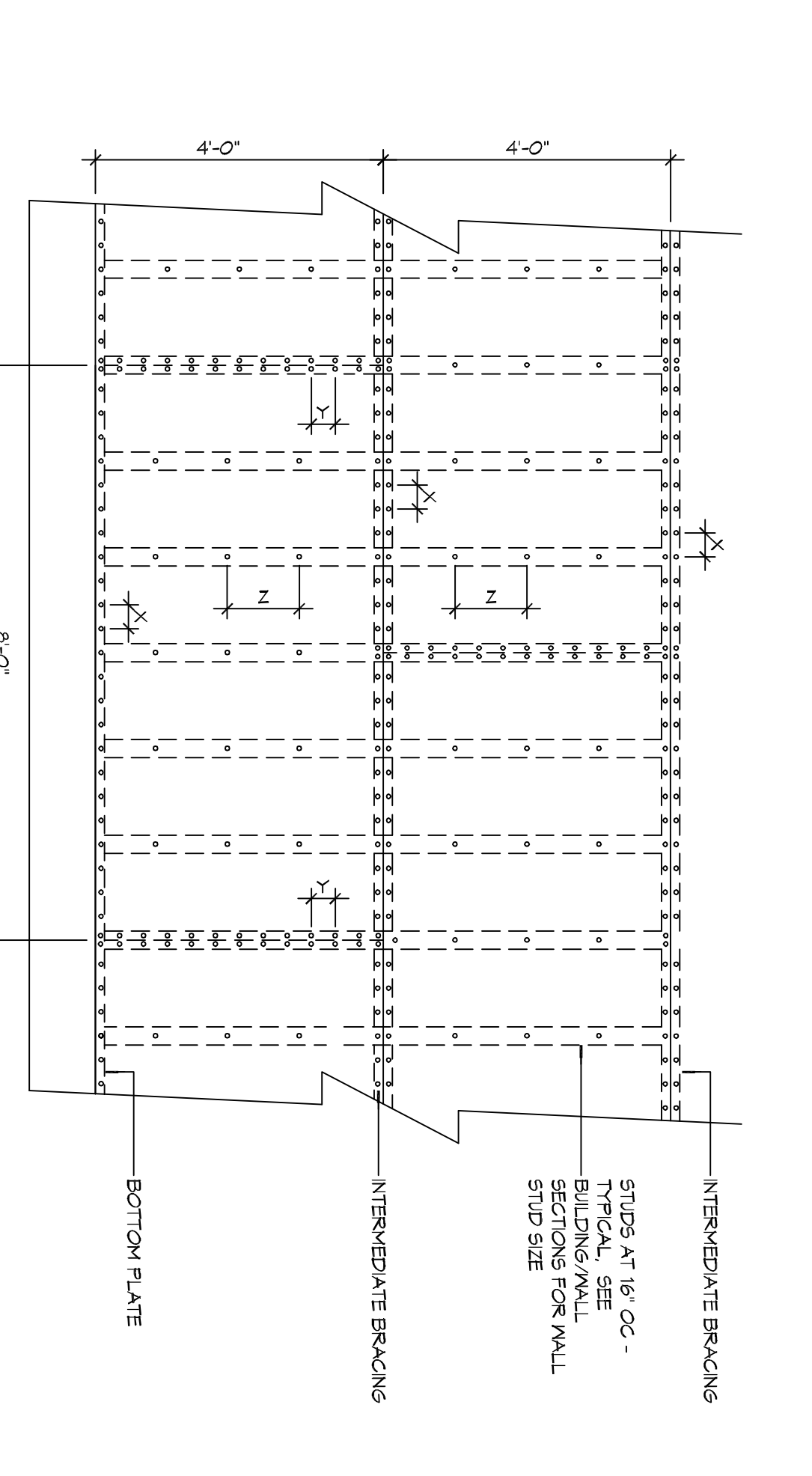
FOUNDATION SUPPORTING	FOUNDATION SUPPORTING	23 INCHES ON CENTER	30 INCHES ON CENTER
UPLIFT LOADS	1 - 3 STORIES	8 END ZONES	INTERIOR ZONES

TABLE S107.9 - SILL OR BOTTOM PLATE TO FOUNDATION CONNECTIONS RESISTING SHEAR LOADS - 130 MPH WIND EXP "C"
MFCM 2015 TABLE 9.2B

FOUNDATION SUPPORTING	FOUNDATION SUPPORTING	MINIMUM ANCHOR BOLT SPACING (INCHES)	MINIMUM ANCHOR BOLT SPACING (INCHES)
UPLIFT LOADS	4 STORY	5/8" Ø ANCHOR BOLTS	48 INCHES ON CENTER (MAXIMUM) W/ANCHOR BOLTS

TABLE S107.10 - FULL HEIGHT STUD REQUIREMENT FOR HEADERS OR WINDOW SILL PLATES IN EXTERIOR WALLS EXPOSURE "C"
MFCM 2015 TABLE 9.2C

HEADER SPAN (FEET)	NUMBER OF FULL HEIGHT STUD REQUIRED AT EACH END OF THE HEADER	12" O.C.	16" O.C.	24" O.C.
2	1	1	1	1
4	2	2	2	1
6	3	3	3	2
8	4	4	3	2



NAIL SPACING
 X = 4" OC
 Y = 4" OC
 Z = 12" OC
 INTERIOR SHEATHING: 1/2" PLYWOOD EACH FACE STAGGERED 48".
 EXTERIOR SHEATHING: 5/8" DENSIFIBER SHEATHING EXTERIOR FACE STAGGERED 48".
 PANEL EDGES: 3d NAILS @ 12" O.C. FASTENING @ INTERMEDIATE MEMBERS.

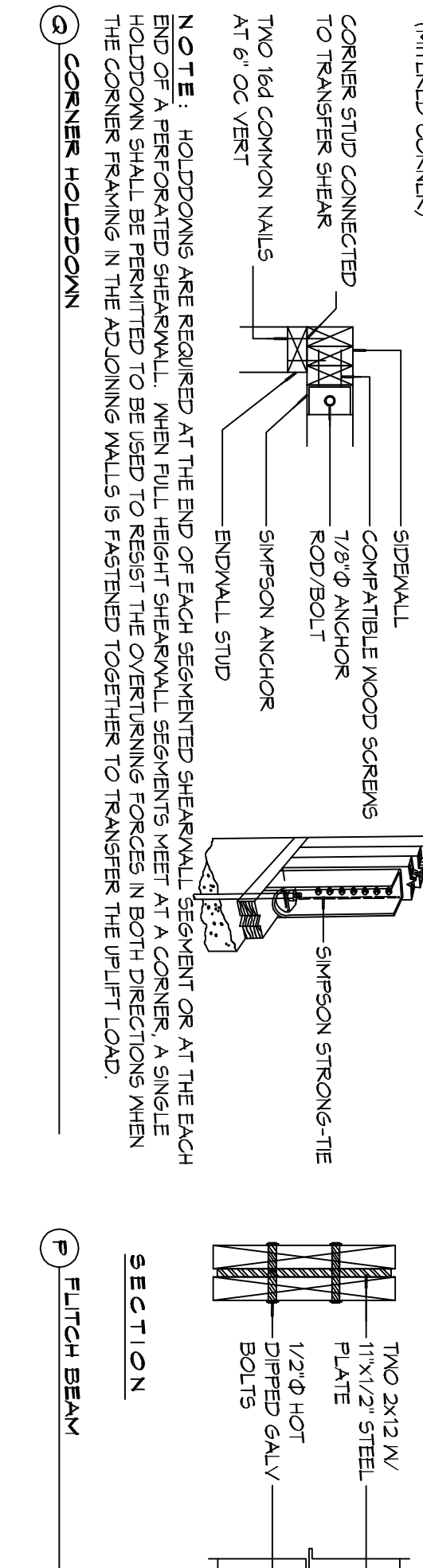
NOTE: SPACE NAILS AT EACH WALL HOLE.
 SHEAR WALL EXTERIOR SHEATHING NAILING PATTERN

TABLE S107.5 - JACK STUD REQ - INT LOADBEARING WALLS
MFCM 2015 TABLE 9.22F

HEADER SPAN (FT)	ROOF SPAN (FEET)					
	12 FEET	24 FEET	36 FEET	48 FEET	60 FEET	72 FEET
2	1	1	1	1	1	1
4	1	1	1	1	1	1
6	1	1	1	1	1	1
8	1	1	1	1	1	1
10	1	1	1	1	1	1
12	1	1	1	1	1	1
14	1	1	1	1	1	1
16	2	2	2	2	2	2

TABLE S107.6 - JACK STUD REQ - EXTERIOR LOADBEARING WALLS
MFCM 2015 TABLE 9.22F

HEADER WIDTH - 3" (2-2N), 4.5" (3-2N), 5", 6.5" (4-2N) EACH W/ 1/2" PLYWOOD SPACERS BETWEEN	ROOF LIVE LOAD 20 PSF						ROOF LIVE LOAD 30 PSF					
	3'	4.5'	5'	6.5'	3'	4.5'	5'	6.5'	3'	4.5'	5'	6.5'
2	1	1	1	1	1	1	1	1	1	1	1	1
4	1	1	1	1	1	1	1	1	1	1	1	1
6	2	2	2	2	2	2	2	2	2	2	2	2
8	2	2	2	2	2	2	2	2	2	2	2	2
10	3	3	3	3	3	3	3	3	3	3	3	3
12	3	3	3	3	3	3	3	3	3	3	3	3
14	4	4	4	4	4	4	4	4	4	4	4	4
16	4	4	4	4	4	4	4	4	4	4	4	4



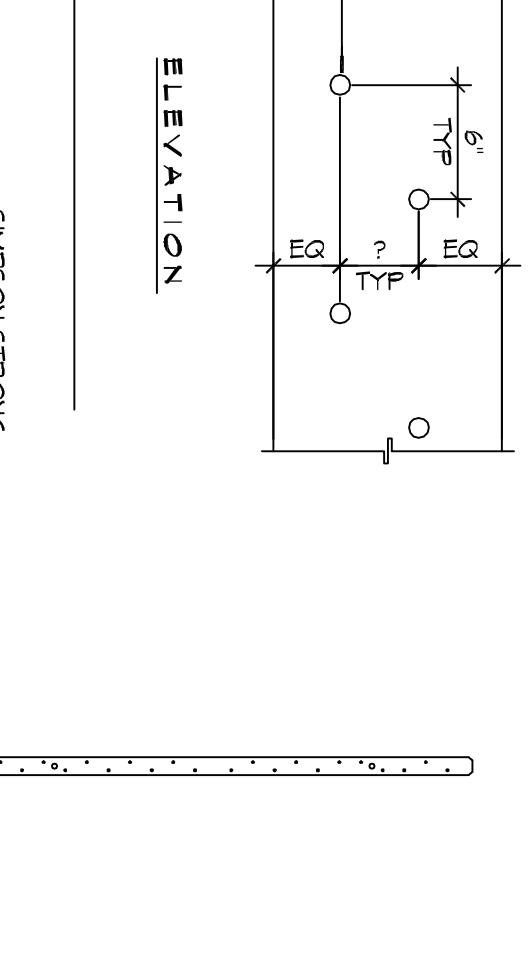
NOTE: HOLD-DOWNS ARE REQUIRED AT THE END OF EACH SEGMENTED SHEARWALL JOINT OR AT THE EACH END OF A PERFORATED SHEARWALL. WHEN FULL-HEIGHT SHEARWALL SEGMENTS MEET AT A CORNER, A SINGLE HOLD-DOWN SHALL BE PERMITTED TO BE USED TO RESIST THE OVERLAPPING FORCES IN BOTH DIRECTIONS WHEN THE CORNER FRAMING IN THE ADJOINING WALLS IS FASTENED TOGETHER TO TRANSFER THE UPLIFT LOAD.

TABLE S107.3 - NAILING SCHEDULE
MFCM 2015 TABLE 9.1

DESCRIPTION	NUMBER OF COMMON NAILS	NUMBER OF BOX NAILS	SPACING
HEADER TO HEADER (FACE NAIL)	16d	16d	16" OC EDGES

TABLE S107.4 - BUILDING ENVELOPE REQUIREMENTS

OPAKE ELEMENTS	ASSEMBLY	MIN. R-VALUE	INSULATION
INSULATION ENCLOSED ABOVE DECK	U-0.046	R-20.0 c.i.	
ATTIC AND OTHER	U-0.021	R-38	
METAL BUILDING	U-0.151	R-5.1 c.i.	
METAL BUILDING	U-0.119	R-13.0	
WOOD-FRAMED AND OTHER	U-0.124	R-13.0	
WOOD-FRAMED AND OTHER	U-0.094	R-13.0	
MASS	U-0.101	R6.9 c.i.	
STEEL JOIST	U-0.052	R-19.0	
WOOD FRAMED AND OTHER	U-0.051	R-19.0	
SLAB-ON-GRADE	F-0.193	NR	
UNHEATED	U-0.100	NR	
SPINNING	U-1.450	NR	
NON-SPINNING	U-1.450	NR	



SECTION
 TWO 2x12 W/ 1 1/2" STEEL PLATE
 1/2" DIA. UPLIFT DIAPHRAGM BOLTS

ELEVATION
 SIMPSON STRONG-TIE AT TOP OF EACH STUD IN GABLE END WALLS
 SIMPSON STRONG-TIE AT BOTTOM OF EACH STUD TO STUD

ROOF UNDERLAYMENT NOTES

- FOR ROOF SLOPES FROM TWO UNITS VERTICAL IN 12 UNITS HORIZONTAL (17-PERCENT SLOPE) UP TO FOUR UNITS VERTICAL IN 12 UNITS HORIZONTAL (33-PERCENT SLOPE), UNDERLAYMENT SHALL BE TWO LAYERS APPLIED IN THE FOLLOWING MANNER:
 a. APPLY A 14 INCH STRIP OF UNDERLAYMENT FELT PARALLEL WITH AND STAGGING AT THE EAVE, FASTENED SUFFICIENTLY TO HOLD IN PLACE UNDERLAYMENT. OVERLAPPING 30-CENTIMETER SHEETS 14 INCHES, AND FASTENED SUFFICIENTLY TO HOLD IN PLACE.
 b. FOR ROOF SLOPES OF FOUR UNITS VERTICAL IN 12 UNITS HORIZONTAL (33-PERCENT SLOPE), UNDERLAYMENT SHALL BE ONE LAYER APPLIED IN THE FOLLOWING MANNER:
 a. UNDERLAYMENT SHALL BE APPLIED SINGLE PLY, PARALLEL TO AND STAGGING FROM THE EAVE AND LAPPED 2 INCHES, FASTENED SUFFICIENTLY TO HOLD IN PLACE. END LAPS SHALL BE OFFSET BY 6 FEET.

ROOF APPLICATION & FASTENING NOTES

- INSTALL ROOF PER MANUFACTURER'S RECOMMENDATIONS FOR 130MPH WIND SPEED.

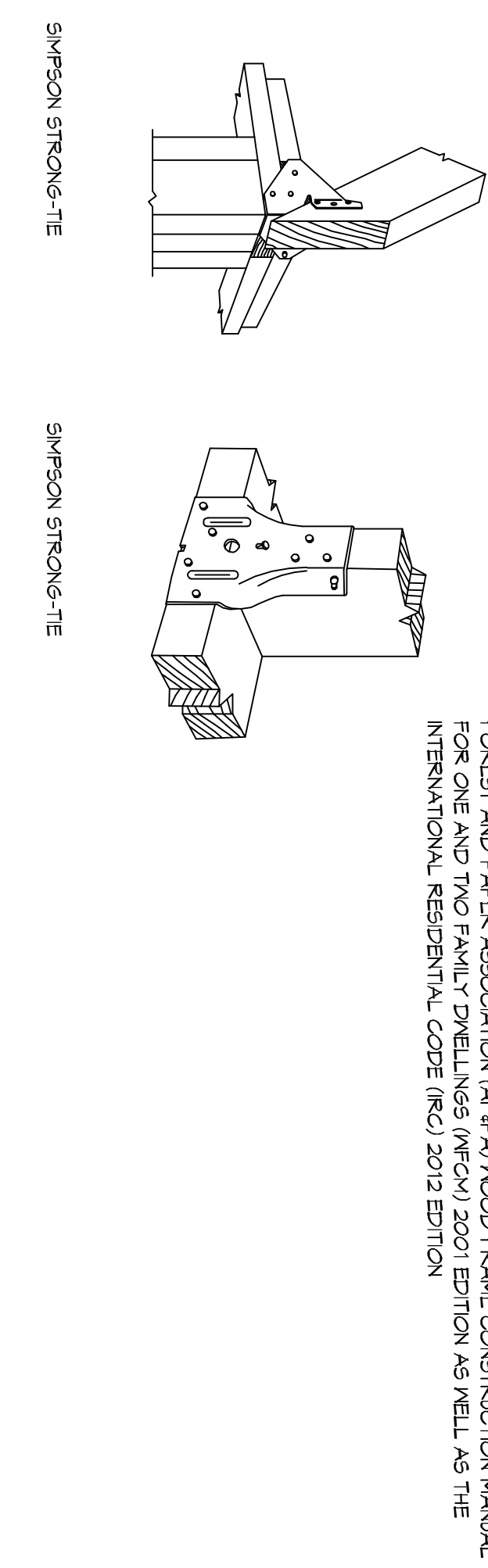
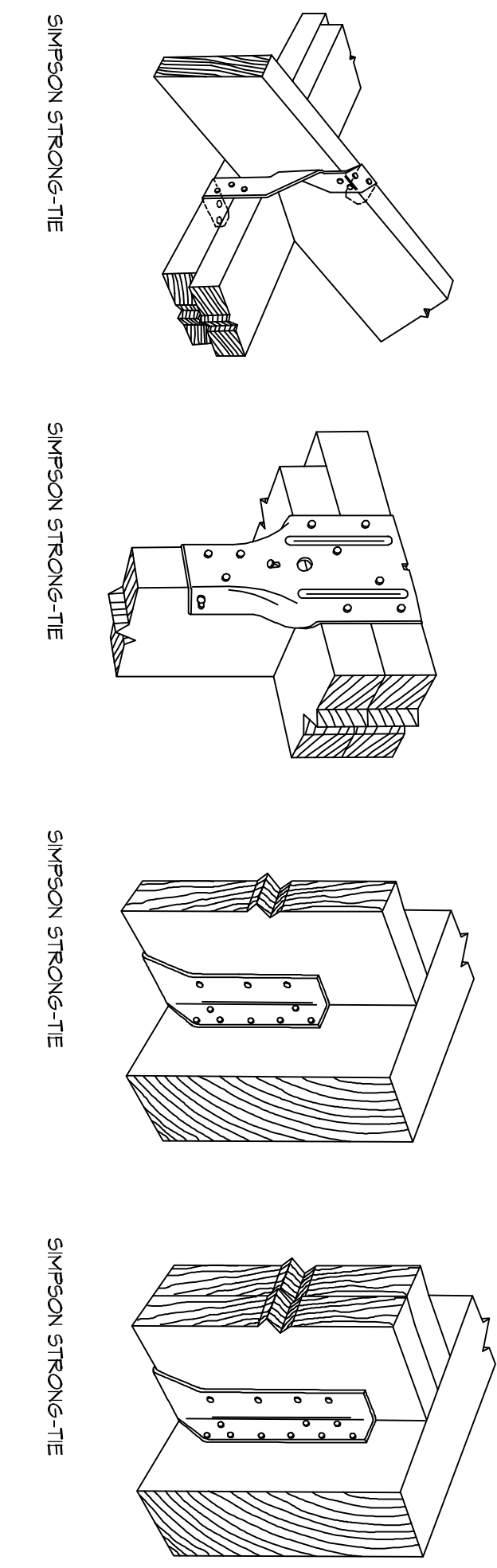
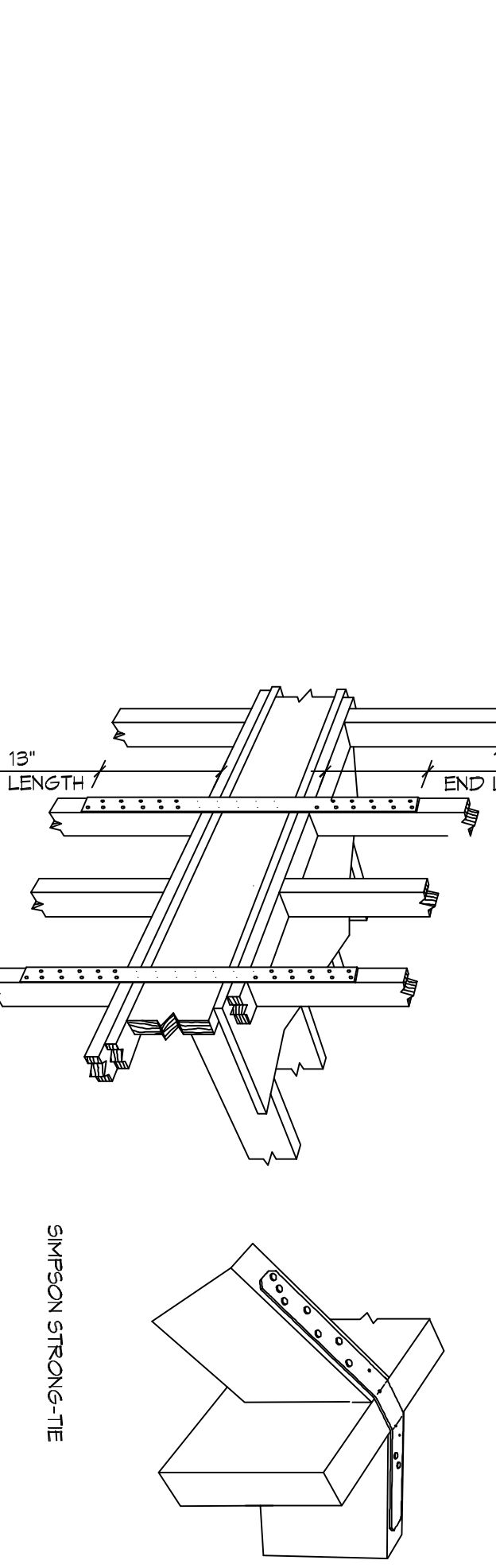
GENERAL UPLIFT CONNECTION NOTES

- ROOF ASSEMBLY TO WALL ASSEMBLY:**
 WHEN RAFTERS OR TRUSSES ARE NOT LOCATED UNDER THE WALL PLATE, RAFTERS SHALL BE ATTACHED TO THE WALL STUD WITH UPLIFT CONNECTIONS. WALL ASSEMBLY TO WALL ASSEMBLY:
 STUDS TO STUD UPLIFT CONNECTIONS FROM UPPER STORY WALL STUD TO LOWER STORY WALL STUD SHALL BE FASTENED TO THE WALL STUD WITH UPLIFT CONNECTIONS. WALL ASSEMBLY TO FOUNDATION:
 FIRST FLOOR WALL STUDS SHALL BE CONNECTED TO THE FOUNDATION SILL. GRADE 36 STEEL STRAP SHALL BE WELDED TO THE WALL STUDS AND HAVE A MINIMUM EMBEDMENT OF 1 INCHES IN CONCRETE FOUNDATIONS. OR BE LAPPED UNDER THE BOTTOM PLATE. 3 INCH SQUARE WAGERS SHALL BE USED ON THE ANCHOR BOLTS AND ANCHOR BOLT SPACINGS SHALL NOT EXCEED THE REQUIREMENTS. STEEL STRAPS EMBEDDED IN OR IN CONTACT WITH CONCRETE SHALL BE HOT-DIPPED GALV. AFTER FABRICATION, OR WAINIF FROM 6195 OR Z550 GALV. STL.

TABLE S107.1 - ROOF SHEATHING OR CLADDING REQUIREMENT - WIND LOAD EXP "C"

SHEATHING LOCATION	RAFTER / TRUSS SPACING	MAX NAIL SPACING FOR 8d COMMON NAILS OR 10d BOX NAILS (INCHES)	
		E	F
INTERIOR ZONE	12" OC	6	12
	24" OC	6	6
	12" OC	6	6
PERIMETER EDGE ZONE	16" OC	4	4
	24" OC	3	3

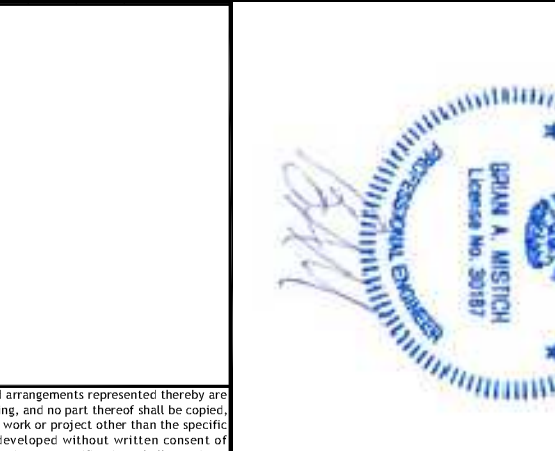
DESIGN CRITERIA:
 THE CONSTRUCTION FOR SUD RESERVE, WHERE BASIC WIND SPEED IS 130 MPH, SHALL BE IN ACCORDANCE WITH THE 2015 INTERNATIONAL RESIDENTIAL WIND SPEED MAP AND PERMITS ASSOCIATION (A/RP) WOOD FRAME CONSTRUCTION MANUAL FOR ONE AND TWO FAMILY DWELLINGS (MFCM) 2015 EDITION, AS WELL AS THE INTERNATIONAL RESIDENTIAL CODE (IRC) 2012 EDITION.



BATHROOM ADDITION
 SHEET TITLE: THE CLEMENTS
 1330 CHAMALE DRIVE
 SLIDELL, LA 70458
 DRAWN BY: 2018 DATE: 05-04-2018
 JOB No.: CKD CHECKED BY: BAM

REVISIONS

#	DESCRIPTION	DATE



DAMMON ENGINEERING INC.
 LOUISIANA & MISSISSIPPI
 Chief Engineer: Brian Mstich, PE
 554 Old Spanish Trail
 Slidell, LA 70458
 www.dammonengineering.com
 info@dammonengineering.com
 PH: 985.649.5832