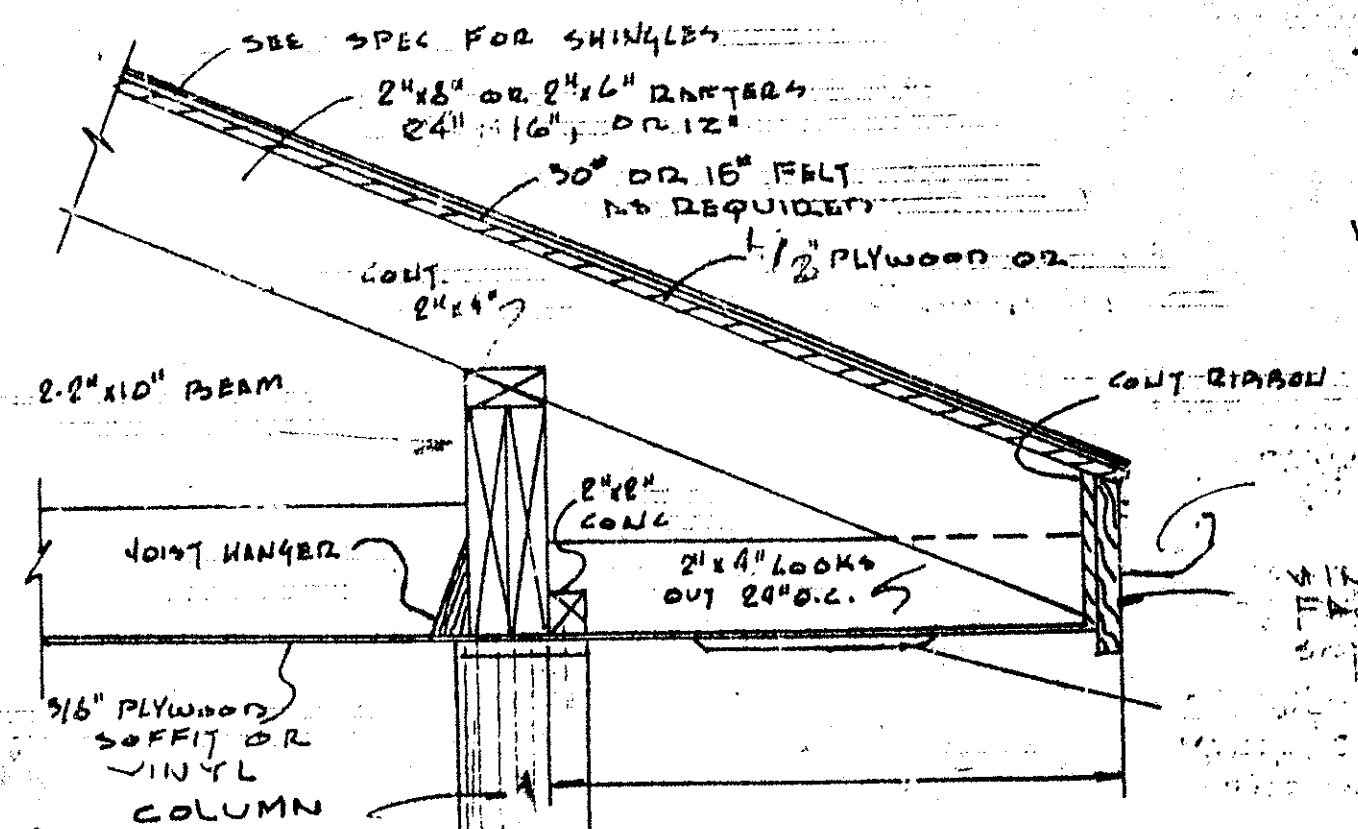


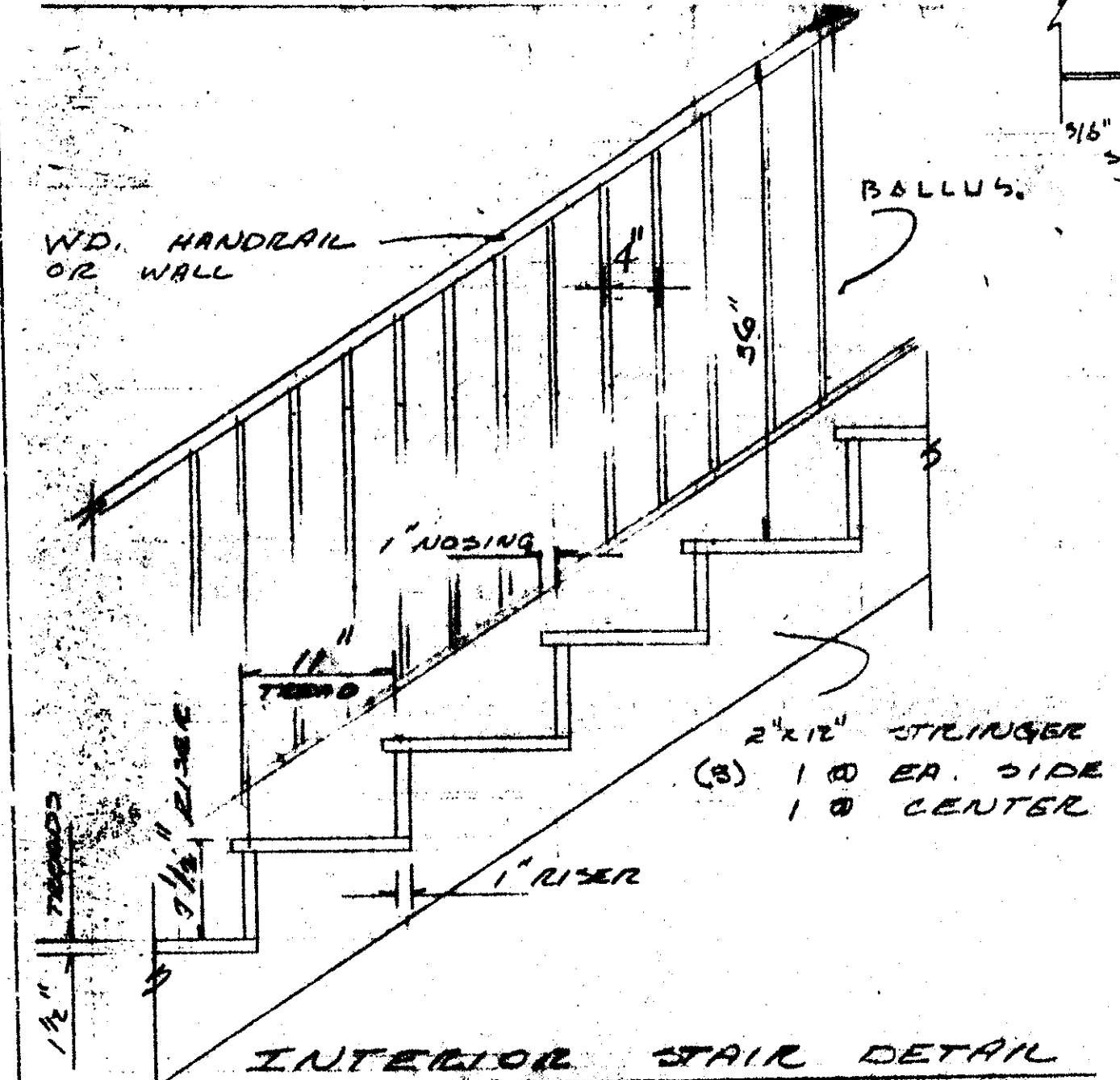
NO. 1
 MAXIMUM ALLOWABLE UNSUPPORTED
 SPAN FOR RIFTERS

2"x10" @ 24" o.c. = 11'-4"
 2"x12" @ 24" o.c. = 13'-0"
 2"x14" @ 24" o.c. = 15'-0"
 2"x16" @ 24" o.c. = 16'-11"
 2"x18" @ 24" o.c. = 18'-11"
 2"x20" @ 24" o.c. = 21'-0"



SECTION THRU:
 PORCH OR PATIO
 (IF REQUIRED)

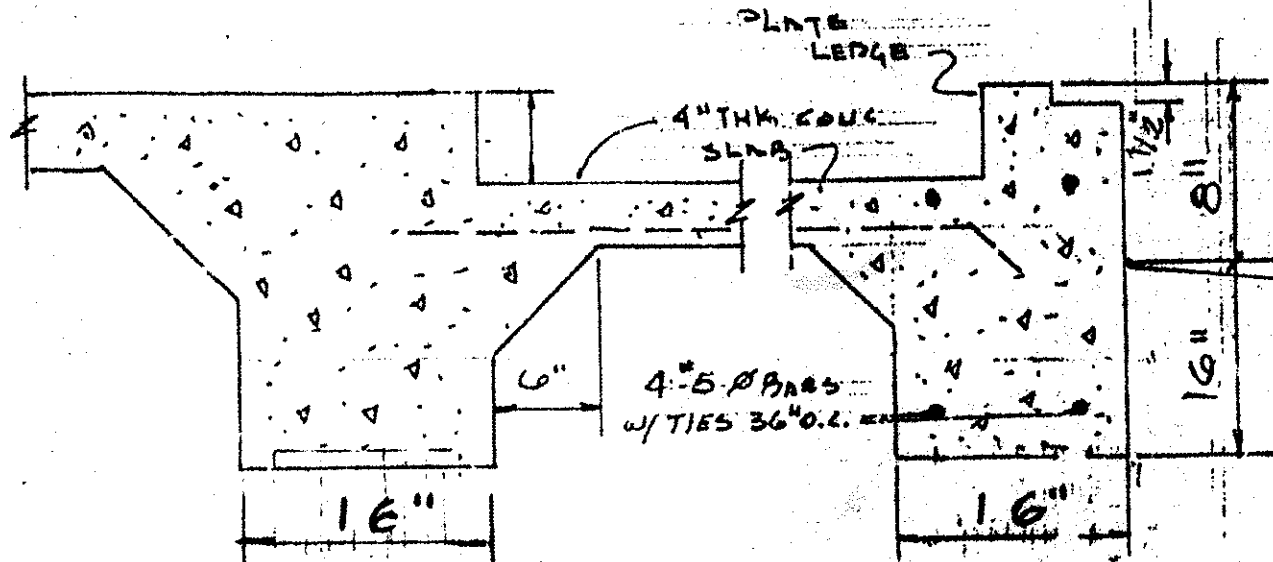
SCALE = 1/2" = 1'-0"



INTERIOR STAIR DETAIL

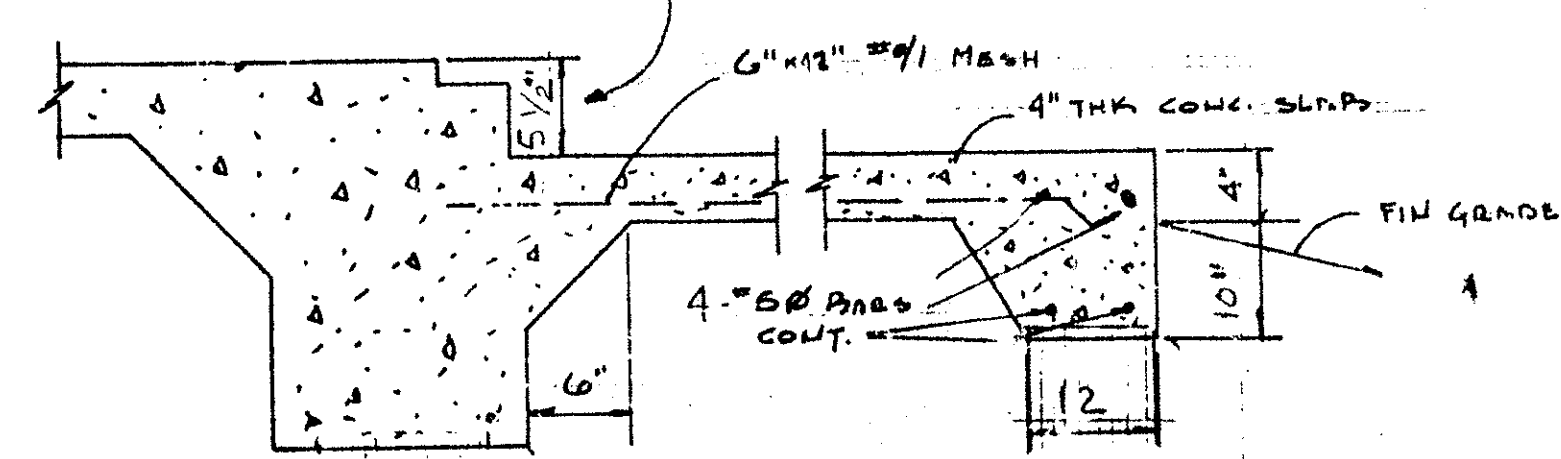
1" = 1'-0"

NOTE: STAIRS SHALL COMPLY WITH CARBO-A92
 SECT. 2215.4 & 2214
 SEE FOUNDATION FOR SLOPE



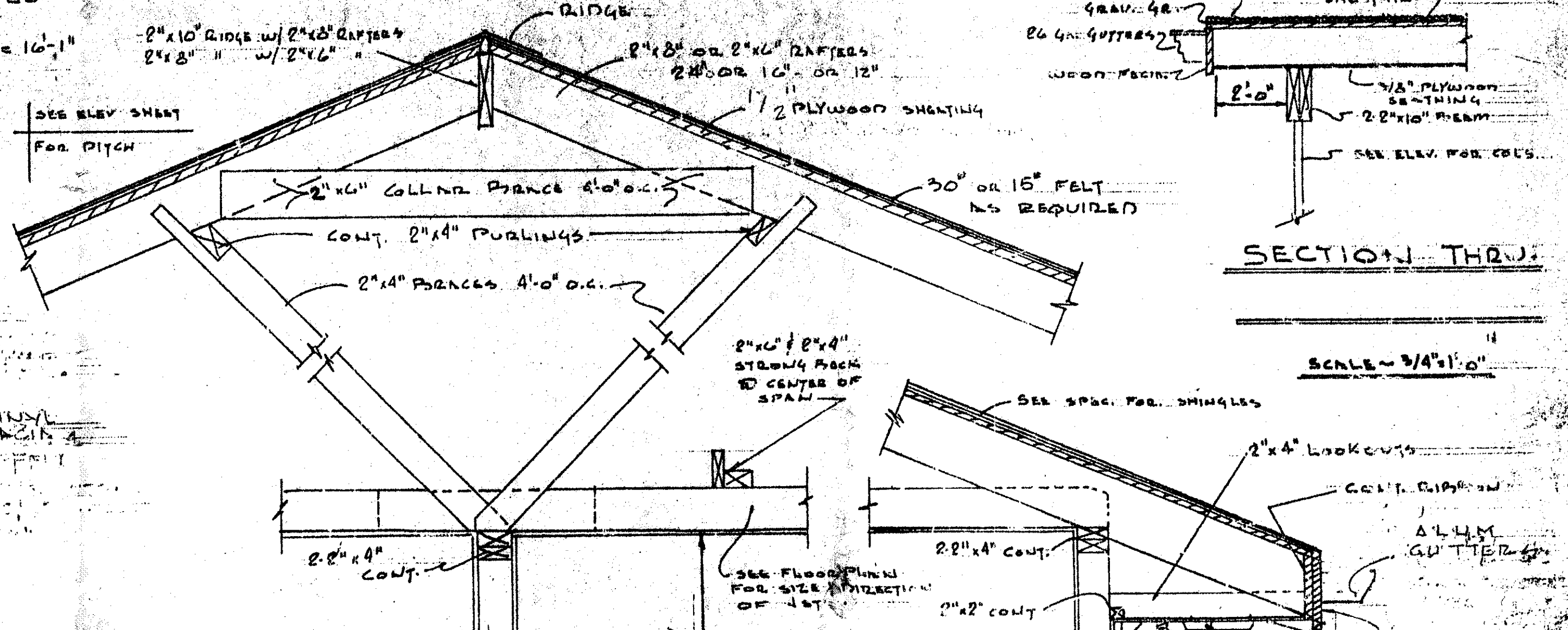
SECTION THRU
 GARAGE (IF REQUIRED)

SCALE = 1" = 1'-0"



SECTION THRU:
 PORCH OR PATIO
 (IF REQUIRED)

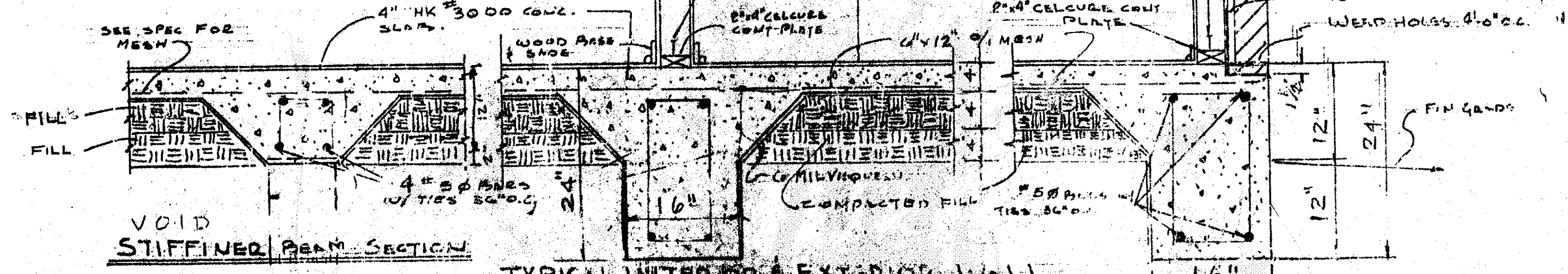
SCALE = 1" = 1'-0"



SECTION THRU:

SCALE = 3/4" = 1'-0"

NOTE:
 PROVIDE 1/2" DIA. GALV.
 CLIP STRAPS
 AS PER HURRICANE
 CODE.



VOID
 STIFFENER BEAM SECTION

TYPICAL INTERIOR & EXT. DOOR WALL
 SECTION

DETAILS