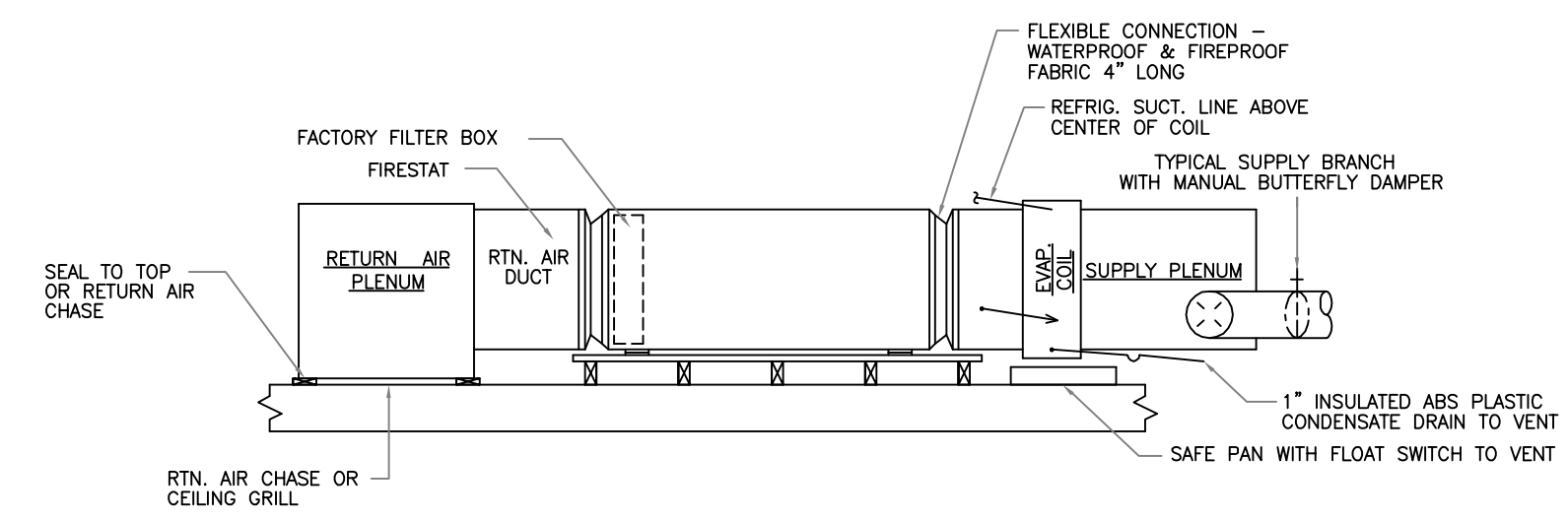
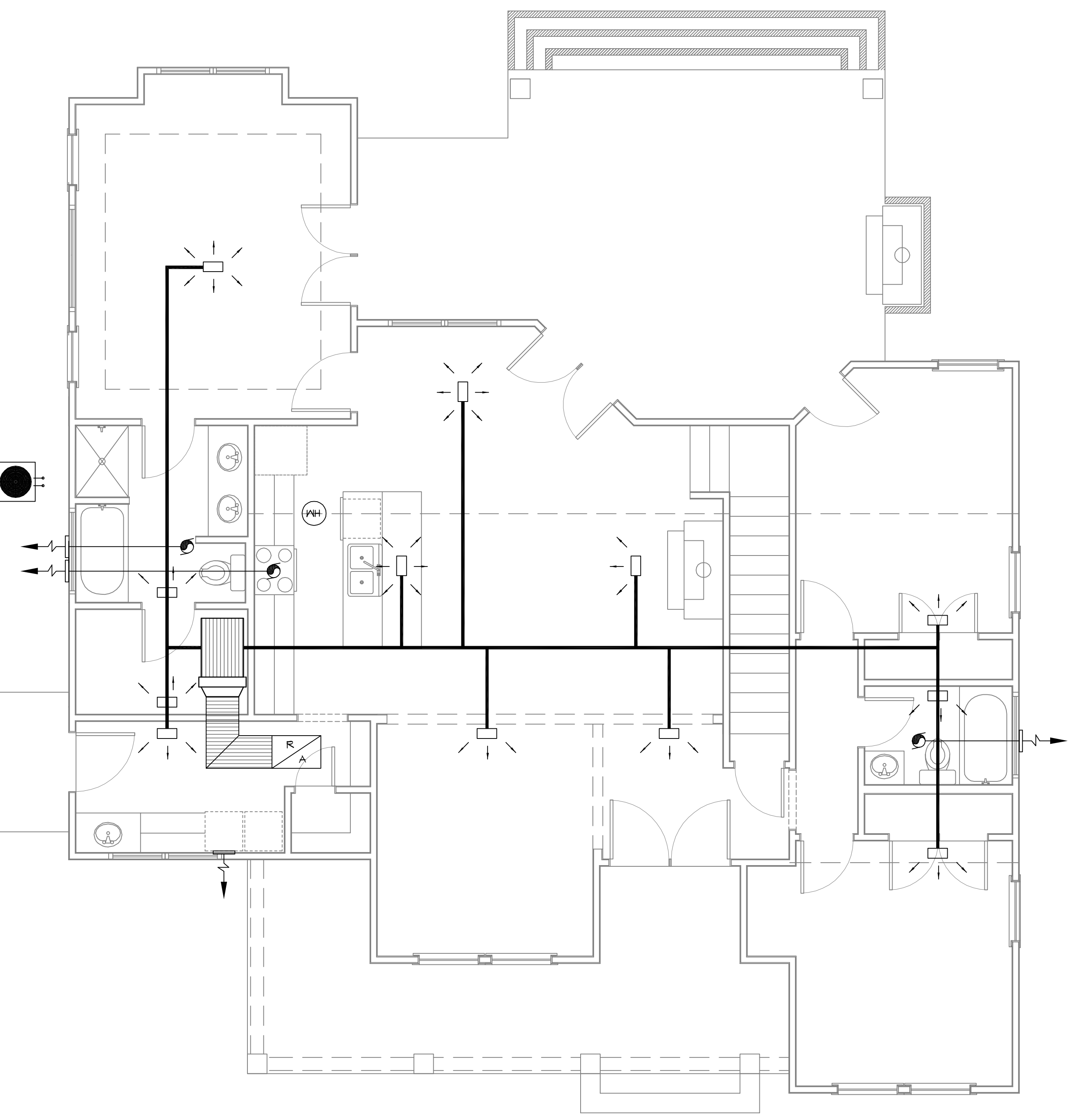
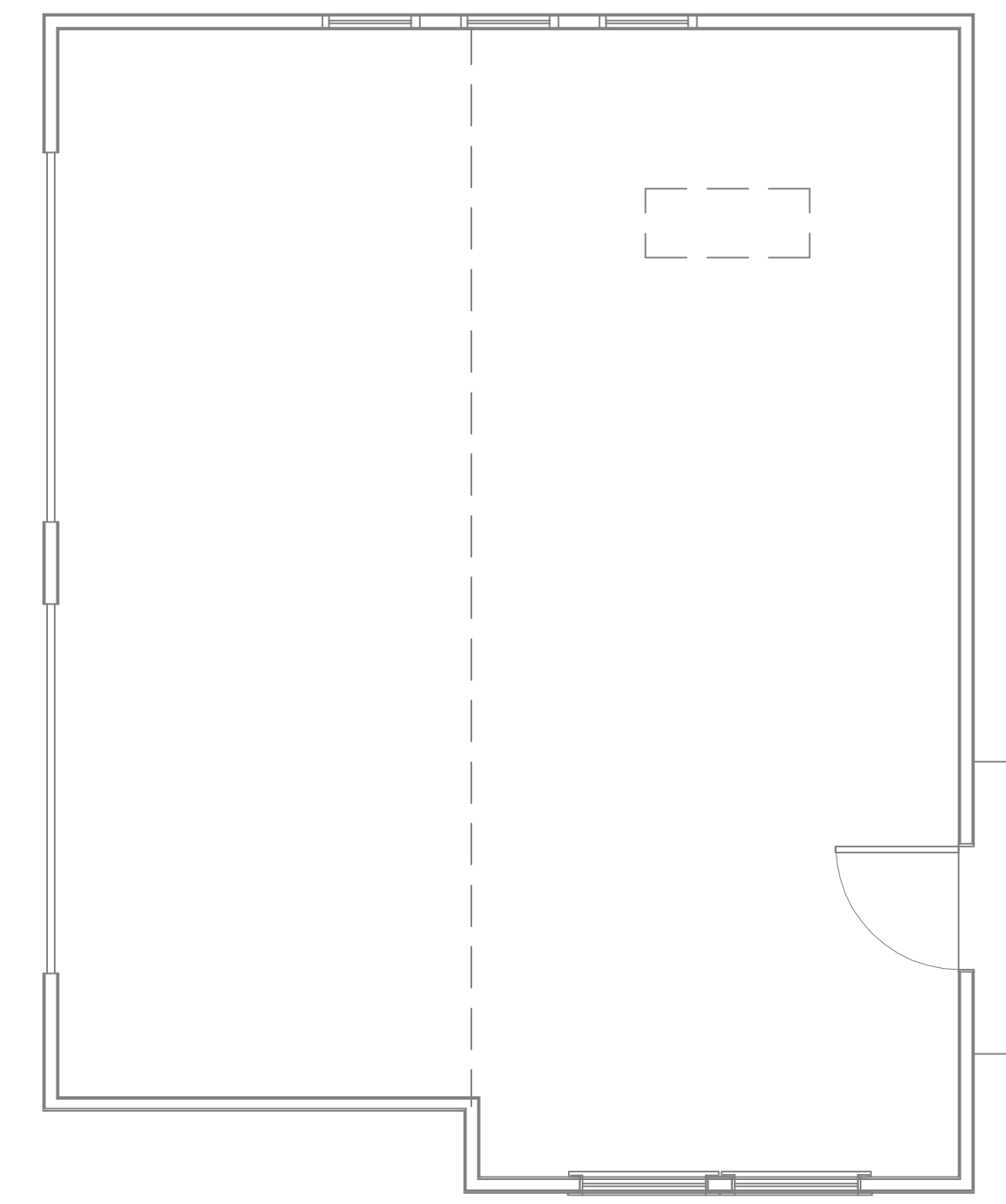
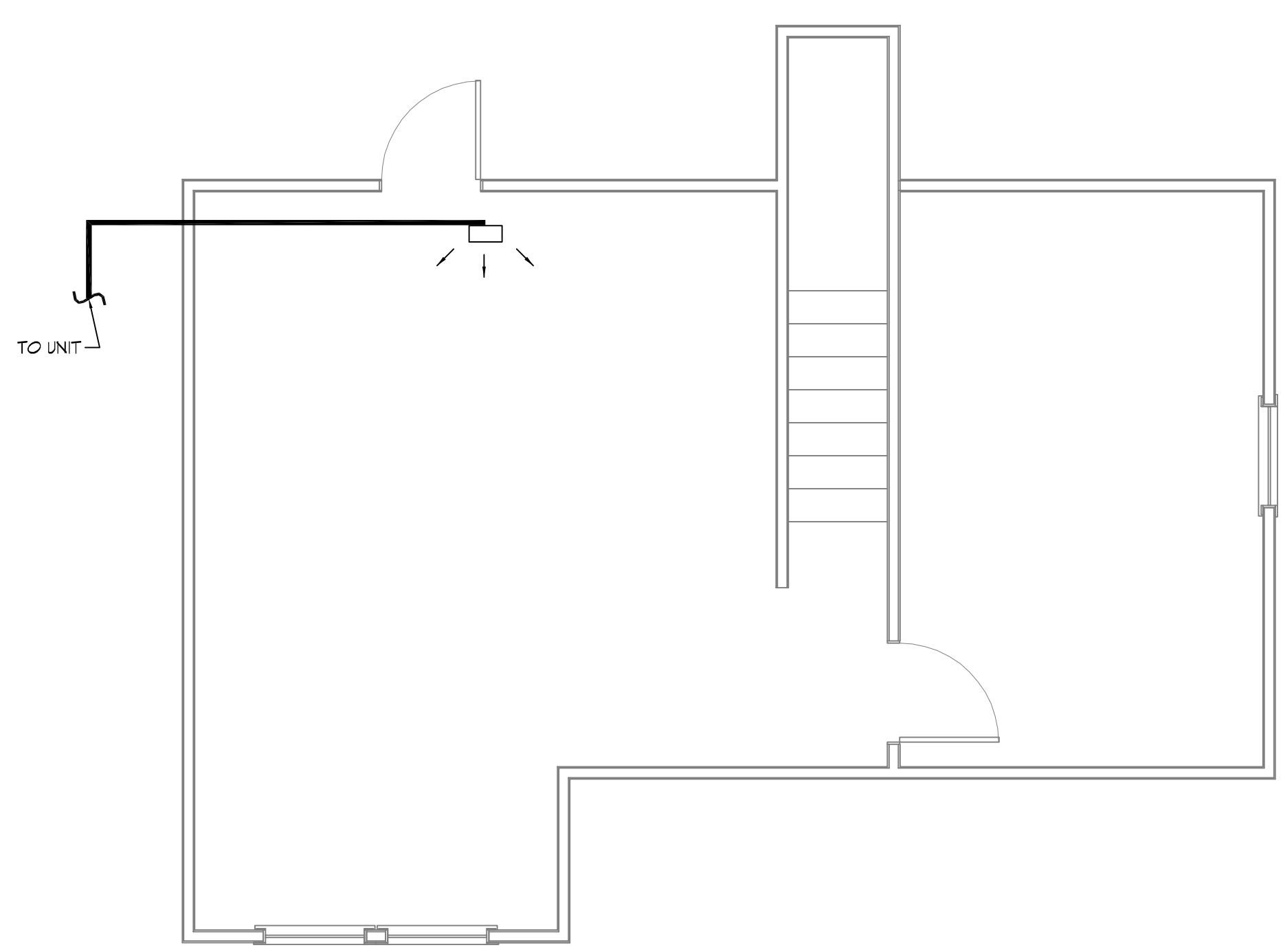


REV. DATE: 11-18-2019 BY: B. MISTICH FOR: B. BERGERON



HVAC HORIZONTAL TYPE
SCALE: NONE

HVAC NOTES

HEATER: GAS
 RETURN AIR: 24" X 24" FILTER GRILLES
 COMPRESSOR MOTOR 1/4 FRACTIONAL HP BLOWER MOTOR
 REGISTERS: THREE WAY THROW - 10" X 6" OR 12" X 6" COIL DRAIN CONNECTED TO PLUMBING WITH 1 1/2" P-TRAP 4'-0" MIN. ATTIC SPACE AT UNIT PROVIDE SOLID CATWALK FROM DISP. 5' MAX TO UNIT AND WATER HEATER.
 PROVIDE GALV. METAL PAN AND CUTOFF UNDER UNIT AND W/H - DRAIN TO SEWER LINE.
 * HVAC CONTRACTOR TO SIZE DUCTS AND BALANCE SYSTEM.
 * HVAC CONTRACTOR TO VENT THE FOLLOWING: HEATER VENT BATHROOMS & STOVE HOOD IN KITCHEN.

NOTES

- MECHANICAL SUBCONTRACTOR TO INSTALL HVAC SYSTEM, ACCORDING TO NATIONAL, STATE AND CITY CODE.
- MECHANICAL SUBCONTRACTOR TO VERIFY HVAC DESIGN LOADS.
- OWNER TO SELECT PLUMBING FIXTURES WITH CONTRACTOR.
- DRAWINGS OF SYSTEM ARE SCHEMATIC AND SHOULD BE CONFIRMED BY SUBCONTRACTOR.
- DUCTS AS SHOWN 26 GAUGE 6.1 INSULATE 1/2" FIBERGLASS INSULATION.
 * MIN. DUCT SIZE 8" DIAMETER
 * MIN. DIFF. SIZE 10" DIAMETER WITH AIR VOLUME REG.
- PLACE DAMPER CONTROLS IN ALL DUCT RUNS.
- THERMOSTAT MIN. HONEYWELL. - WALL MOUNTED
- MIN. CLEARANCE AT UNIT TO BE 4'-0".
- PROVIDE 3/4" PLYWOOD, 24" MIN. WIDE CATWALK TO ALL MECHANICALS IN ATTIC. CATWALK - GREATER THAN 20' NEED 6' HEADROOM - MAX. 50' LENGTH. MAINTAIN PROPER CLEARANCE AT UNITS SERVICE AREA
- CLEARANCE OF ALL HEAT PRODUCING APPLIANCES TO BE GREATER THAN 18" ABOVE OR 6" TO THE SIDE.
- SEC. R315: CARBON MONOXIDE ALARMS - REQUIRED IN THE SMOKE ALARMS
- A/C DRAIN TO 1-1/2" P-TRAP
- PROVIDE 30" MIN. WIDE WORKING PLATFORM TO ACCESS SIDE OF HVAC. ATTIC DECKED WORK AREA MIN. 30" X 30".
- HVLS, VLS, HV'S & GAS RANGE HOODS MUST VENT OUTSIDE. BATHROOM EXHAUST VENTS TO THE OUTSIDE OR PROVIDE MINIMUM 1.5 SQUARE FEET OPENABLE AREA.
- DRYER MUST BE VENTED TO THE EXTERIOR OF THE RESIDENCE, IN COMPLIANCE WITH THE MECHANICAL CODE. DRYER VENT, LENGTH (MAX. LENGTH 25', - 5' FOR 90 DEGREE TURN, - 2.5' FOR 45 DEGREE TURN OR PER MANUFACTURER) AND DISCHARGE LOCATION.

18 MECHANICAL FLOOR PLAN
SCALE: 1/4" = 1'-0"

DAMMON ENGINEERING, INC.
 LOUISIANA & MISSISSIPPI
 www.dammonengineering.com
 info@dammonengineering.com
 PH: 985.649.5832

REVISIONS	DATE
#	DESCRIPTION



CRAIG BERGERON
 NEW RESIDENTIAL
 6410 HIKO COURT
 D'ARCHEDEACRE, MS 39125
 JOB No: 2019 DATE: 08-26-2019
 DRAWN BY: RLD CHECKED BY: BAY

SHEET TITLE:
MECHANICAL FLOOR PLAN
 DRAWING NUMBER:
M101
 SHEET No: 9 of 10