

Dead Load Assumptions: Roof/Ceiling Assembly DL=20psf
Roof Live Load=20psf

		Building Width				
		12	24	36		
		Max. Header/Girder Spans for Common Lumber Species(1,3)				
Headers Supporting	Size	ft.-in.	ft.-in.	ft.-in.	Jack Studs	Full Length Wall/Header Stud Each End
Roof&Ceiling	2-2x4	2-8	2-0	107	1	1
	2-2x6	3-11	2-11	2-6	1	2
	2-2x8	4-11	3-9	3-1	1	3
	2-2x10	6-0	4-7	3-10	2	3
	2-2x12	7-0	5-3	4-5	2	3
	3-2x8	6-2	4-8	3-11	2	3
	3-2x10	7-7	5-8	4-9	2	3
	3-2x12	8-8	6-7	5-6	2	3
	4-2x8	7-2	5-5	4-6	1	3
	4-2x10	8-9	6-7	5-6	2	4
	4-2x12	10-0	7-8	6-5	2	4

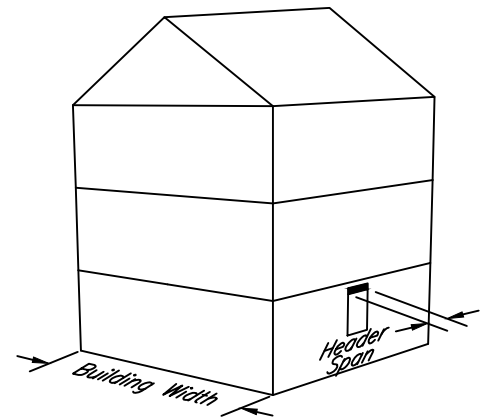


Table 3.22E Header Spans for Exterior Loadbearing Walls

(Supporting a Roof, Ceiling and Two Clear Span Floors)

Values from Table 3.23A supercede values from 3.22A

Jack Studs from Table 3.22F

Full Height Studs from 3.23C

Header Nailing Schedule 16d nails 16" o.c. along edges