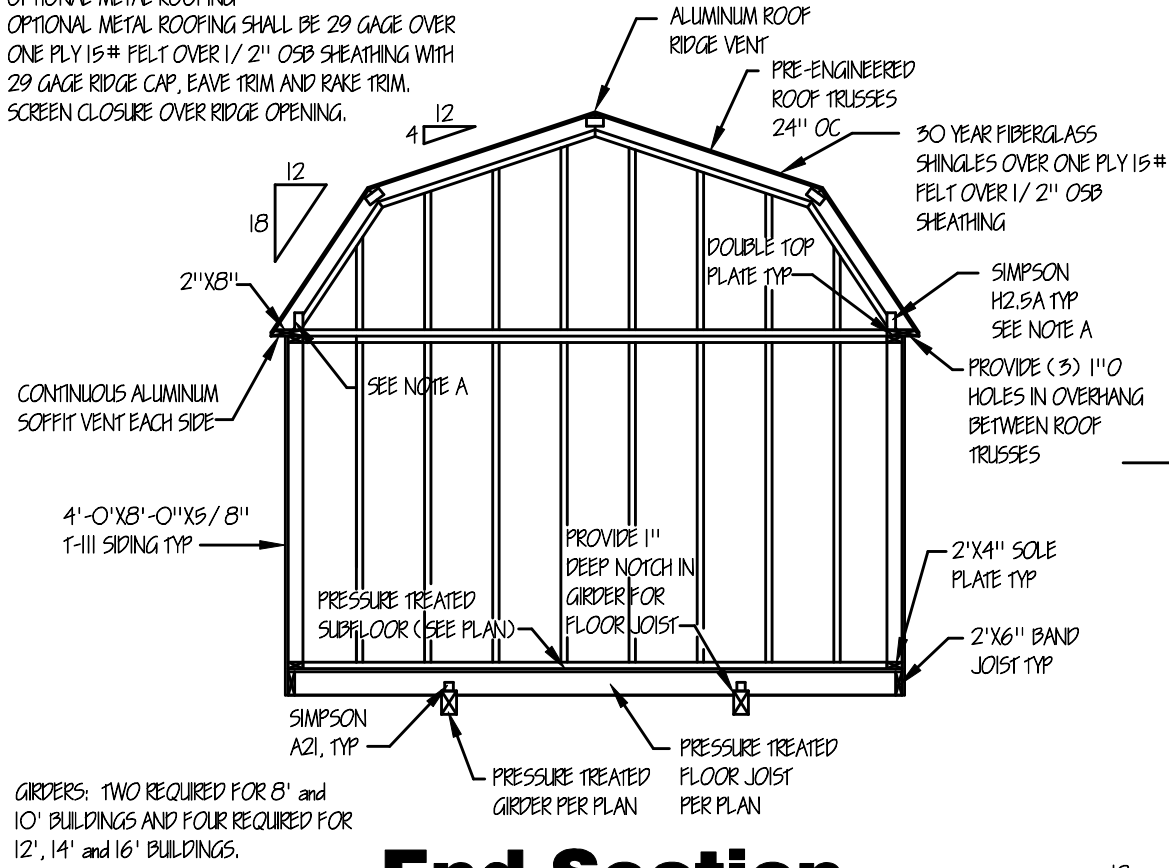
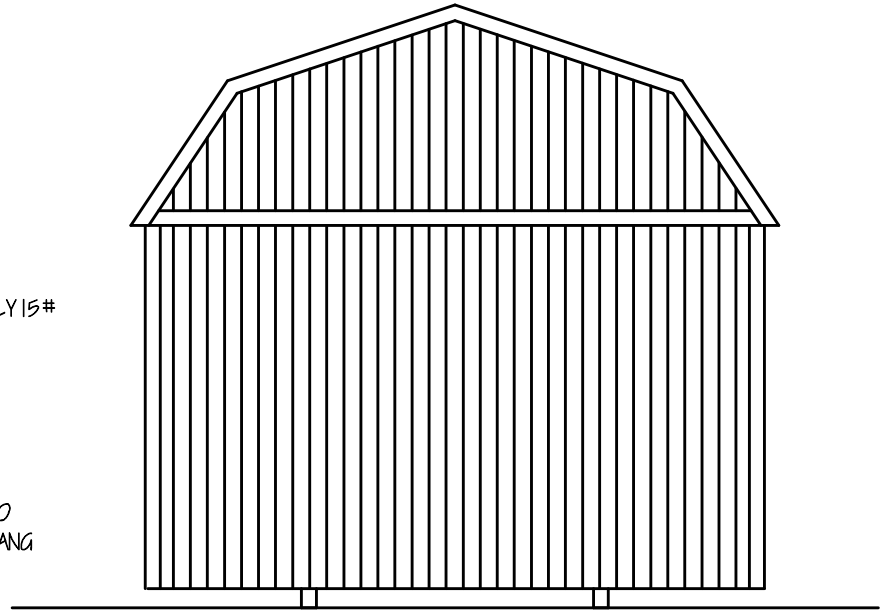


NOTES A:
 WOOD TRUSSES SHALL COMPLY WITH R 502.11
 AND DESIGN SHALL COMPLY WITH ANSI/TPI 1
 AND APPROVED ACCORDING TO R 106.1.
 (R = INTERNATIONAL BUILDING CODE)
 HORIZONTAL REACTION AND DEFLECTION
 SHALL EQUAL ZERO AT BOTH ENDS

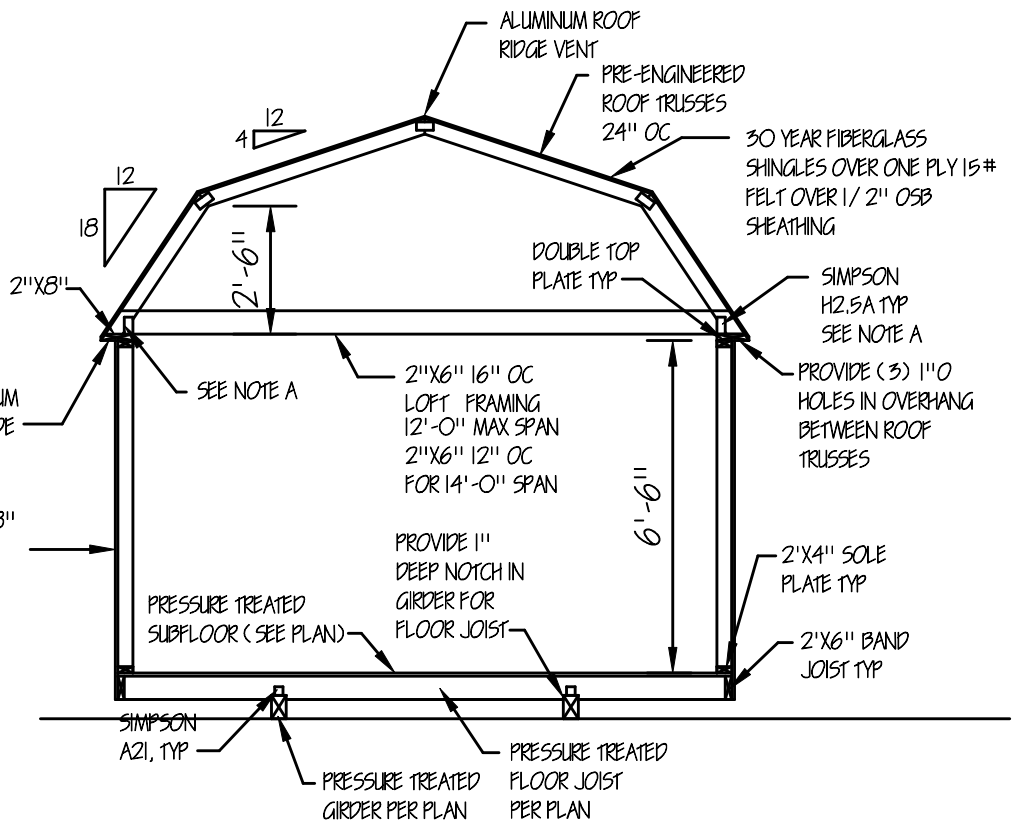
OPTIONAL METAL ROOFING
 OPTIONAL METAL ROOFING SHALL BE 29 GAGE OVER
 ONE PLY 15# FELT OVER 1/2" OSB SHEATHING WITH
 29 GAGE RIDGE CAP, EAVE TRIM AND RAKE TRIM.
 SCREEN CLOSURE OVER RIDGE OPENING.



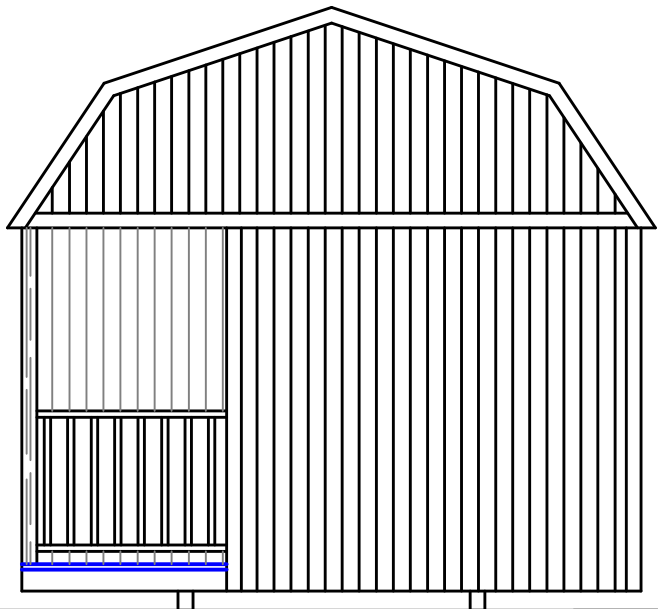
End Section



Left



Typical Section

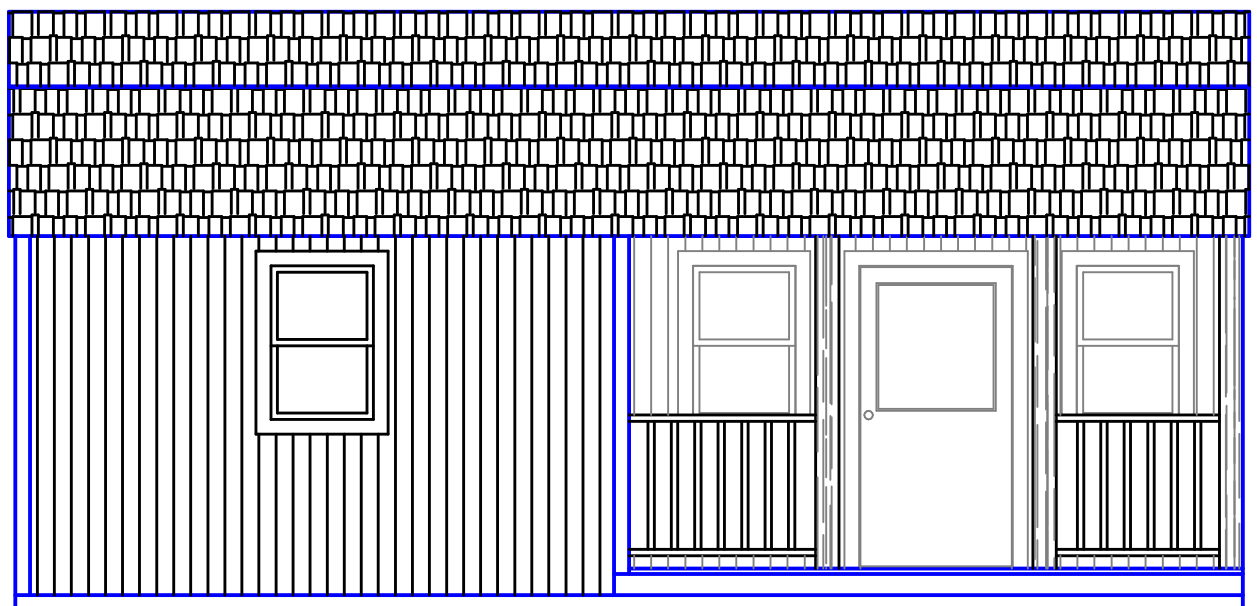


Right

ENGINEERS NOTES:

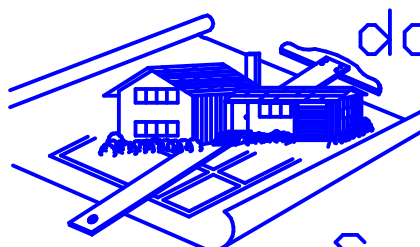
1. FOUNDATIONS PIERS, TIE-DOWN AND ANCHORS SHALL MEET THE REQUIREMENTS OF THE "PERMANENT FOUNDATIONS GUIDE OF MANUFACTURED HOUSING" AS PUBLISHED BY HUD IN SEPTEMBER 1996, AND THE HUD HANDBOOK 4145.1 REV. 2.
2. NO FIELD SUPERVISION PROVIDED UNDER THIS SEAL.
3. NO ADMINISTRATION PROVIDED UNDER THIS SEAL.

NOTE: THE CORNER PORCH LBC WALLS, FLOORING, AND ROOF IS DESIGN TO COMPLY WITH THE 2012 INTERNATIONAL BUILDING AND INTERNATIONAL RESIDENTIAL CODES. THEY ARE NOT INTENDED FOR RESIDENTIAL USE. FOR RESIDENTIAL USAGE 'ALL' STATE AND LOCAL CODES MUST BE MET INCLUDING BUT NOT LIMITED TO SIZES, OPENINGS, CEILING HEIGHTS, ELECTRICAL, PLUMBING ETC.



Front

CORNER PORCH LOFTED BARN CABIN



doug's
 plan
 Service

4210 Stewart Lane
 Perkinston, MS 39573
 228/255-5259

GRACELAND PROPERTIES LLC

P.O. BOX 665
 CUNNINGHAM, KY 42035
 601 - 799 - 4545

Copyright (C) 2008 by Graceland Properties LLC
 All Rights Reserved, including the rights of reproduction in whole or in part in any form.