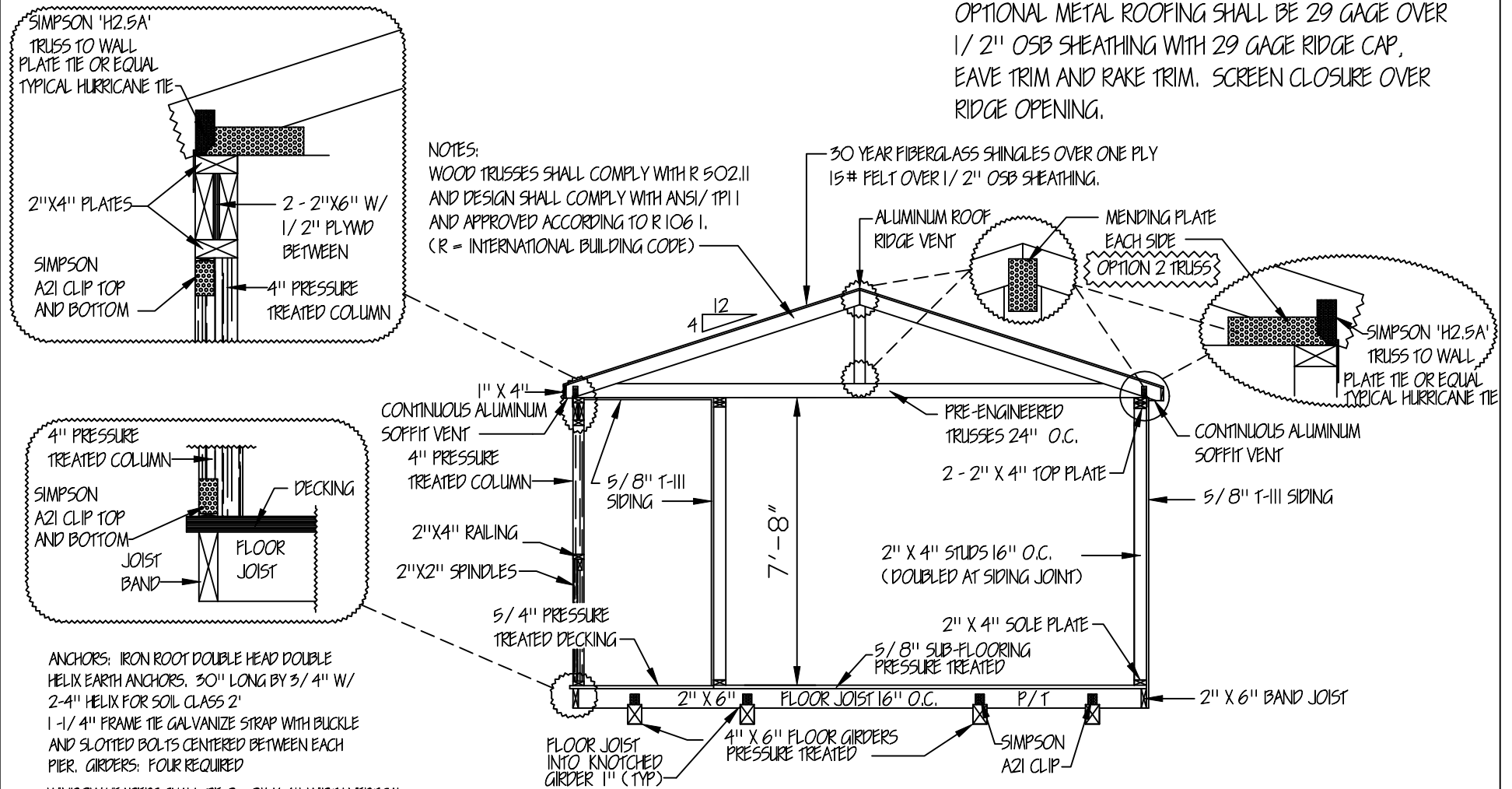
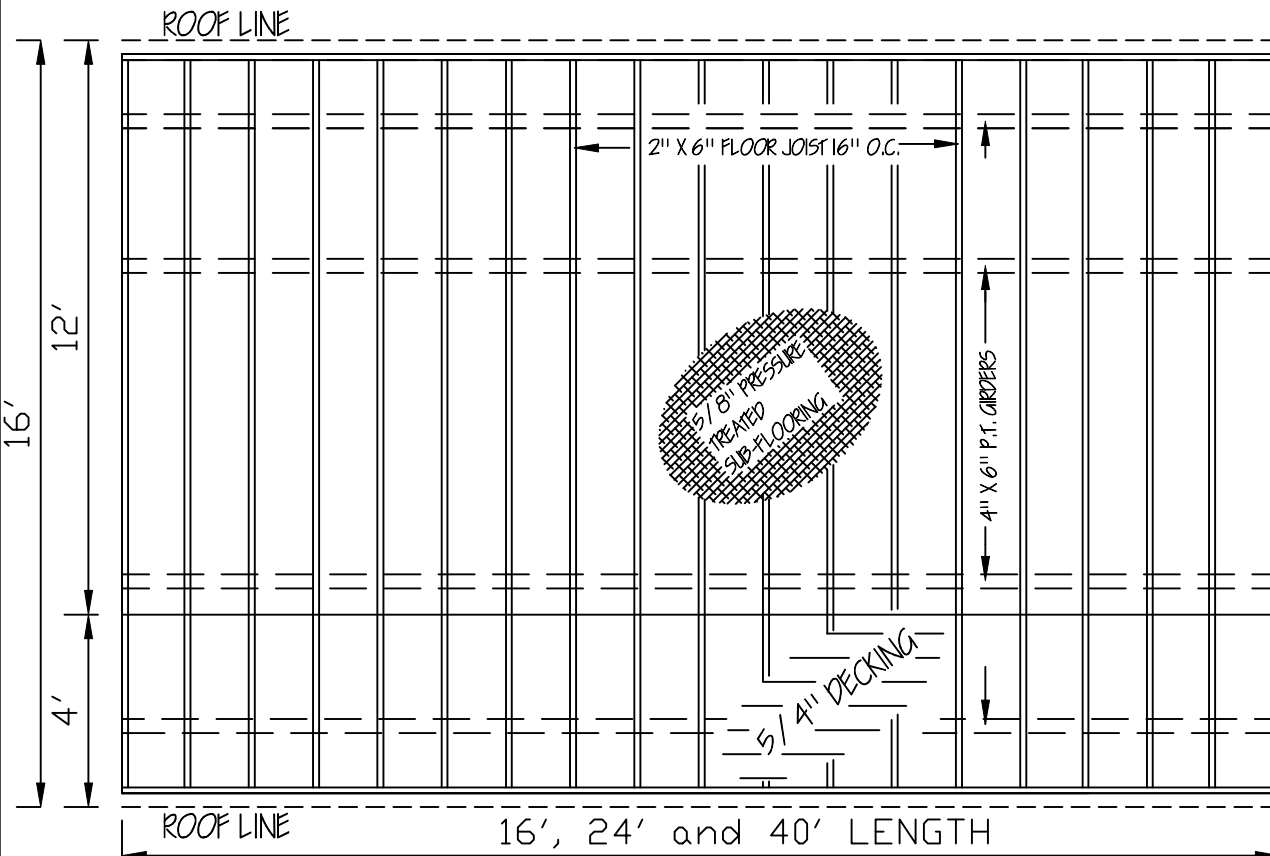


OPTIONAL METAL ROOFING
 OPTIONAL METAL ROOFING SHALL BE 29 GAGE OVER 1/2" OSB SHEATHING WITH 29 GAGE RIDGE CAP, EAVE TRIM AND RAKE TRIM. SCREEN CLOSURE OVER RIDGE OPENING.



Typical Section

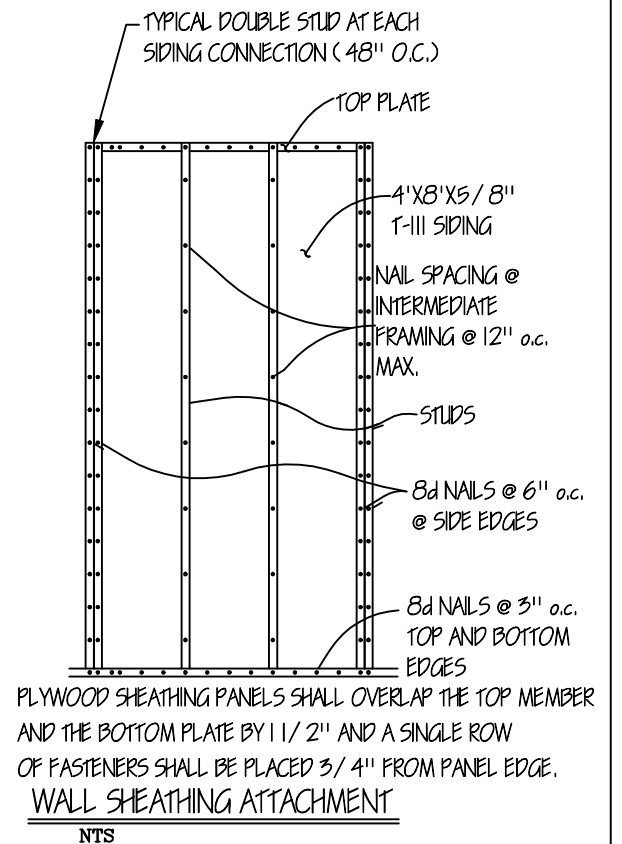


FLOOR FRAMING

MEASURES SHALL BE TAKEN DURING CONSTRUCTION TO INSURE THAT ONLY WORKMANSHIP OF THE HIGHEST QUALITY IS PERFORMED AND THAT ONLY THE BEST MATERIALS AND PRACTICES OF CONSTRUCTION ARE USED FOR A QUALITY AND SOUND BUILDING.

ENGINEERS' NOTES:

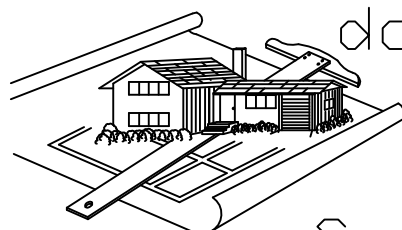
1. FOUNDATIONS PIERS, TIE-DOWNS AND ANCHORS SHALL MEET THE REQUIREMENTS OF THE "PERMANENT FOUNDATIONS GUIDE OF MANUFACTURED HOUSING" AS PUBLISHED BY HUD IN SEPTEMBER 1996, AND THE HUD HANDBOOK 4145.1 REV. 2.
2. NO FIELD SUPERVISION PROVIDED UNDER THIS SEAL.
3. NO ADMINISTRATION PROVIDED UNDER THIS SEAL.



NOTE: THE SIDE PORCH CABIN FLOORING, WALLS AND ROOF ARE DESIGNED TO COMPLY WITH THE 2012 INTERNATIONAL BUILDING AND INTERNATIONAL BUILDING CODES. THEY ARE NOT INTENDED FOR RESIDENTIAL USE. FOR RESIDENTIAL USAGE 'ALL' STATE AND LOCAL CODES MUST BE MET INCLUDING BUT NOT LIMITED TO SIZES, OPENINGS, CEILING HEIGHTS, ELECTRICAL PLUMBING ETC.

Side Porch Cabin

MISSISSIPPI-LOUISIANA



doug's
 plan
 Service

4210 Stewart Lane
 Perkinston, MS 39573
 228/255-5259

GRACELAND PROPERTIES LLC
 P.O. BOX 665
 CUNNINGHAM, KY 42035

Copyright (C) 2008 by Graceland Properties LLC
 All Rights Reserved, including the rights of reproduction in whole or in part in any form.