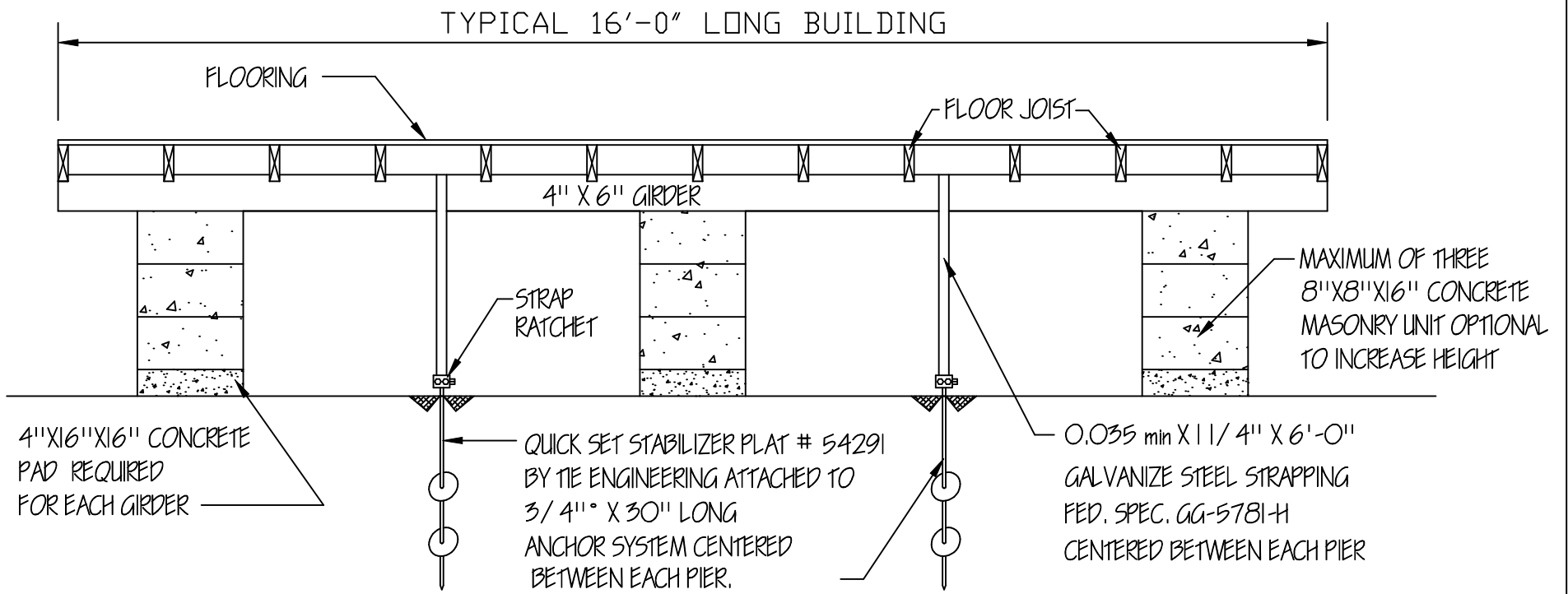
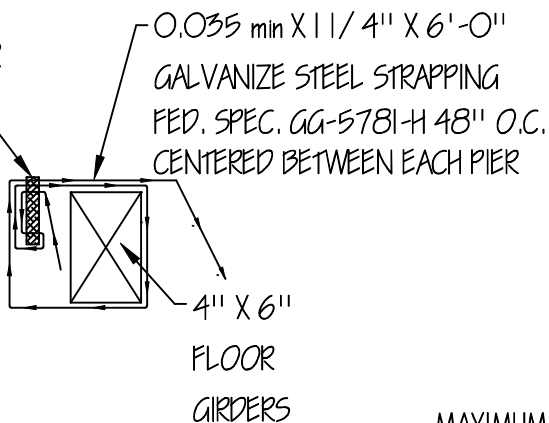


GRACELAND PORTABLE BUILDINGS TYPICAL ANCHOR AND TIE DOWNS



TYPICAL DETAIL

THE TIE DOWN ENGINEERED DOUBLE SLOT BUCKLE # 59140 OR EQUAL. REFER TO MANUFACTURERS SPECIFICATIONS FOR INSTALLATION



GIRDER TIE DOWN

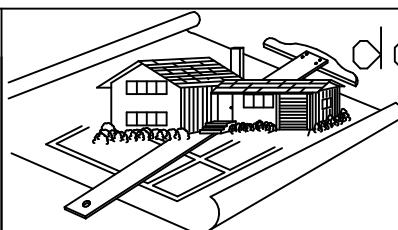
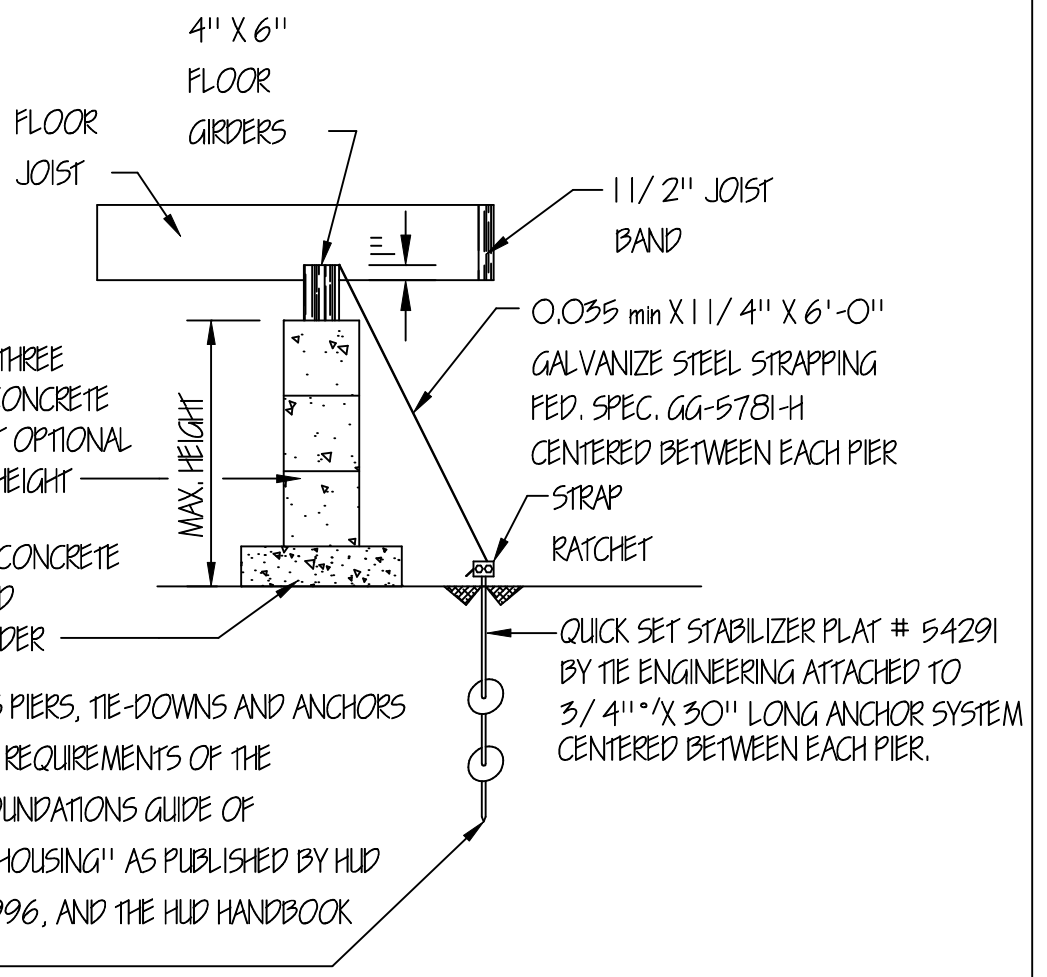
NOTE: FOUNDATIONS ARE DESIGNED TO COMPLY WITH THE 2003, 2006 AND 2009 INTERNATIONAL BUILDING AND INTERNATIONAL RESIDENTIAL CODES. ALL LOCAL AND STATE CODES MUST ALSO BE MET AS REQUIRED.

MAXIMUM OF THREE 8" X 8" X 16" CONCRETE MASONRY UNIT OPTIONAL TO INCREASE HEIGHT

4" X 16" X 16" CONCRETE PAD REQUIRED FOR EACH GIRDER

1. FOUNDATIONS PIERS, TIE-DOWNS AND ANCHORS SHALL MEET THE REQUIREMENTS OF THE "PERMANENT FOUNDATIONS GUIDE OF MANUFACTURED HOUSING" AS PUBLISHED BY HUD IN SEPTEMBER 1996, AND THE HUD HANDBOOK 4145.1 REV. 2.

TYPICAL PIER



Doug Stewart
4210 Stewart Lane
Perkinston, MS 39573
228/255-5259

doug's
plan
Service

GRACELAND PROPERTIES LLC
P.O. BOX 665
CUNNINGHAM, KY 42035

Copyright (C) 2009 by Graceland Properties LLC
All Rights Reserved, including the rights of reproduction in whole or in part in any form.