

# Begue Greenhouse Office Plan

Front Street  
St. Tammany Parish, LA



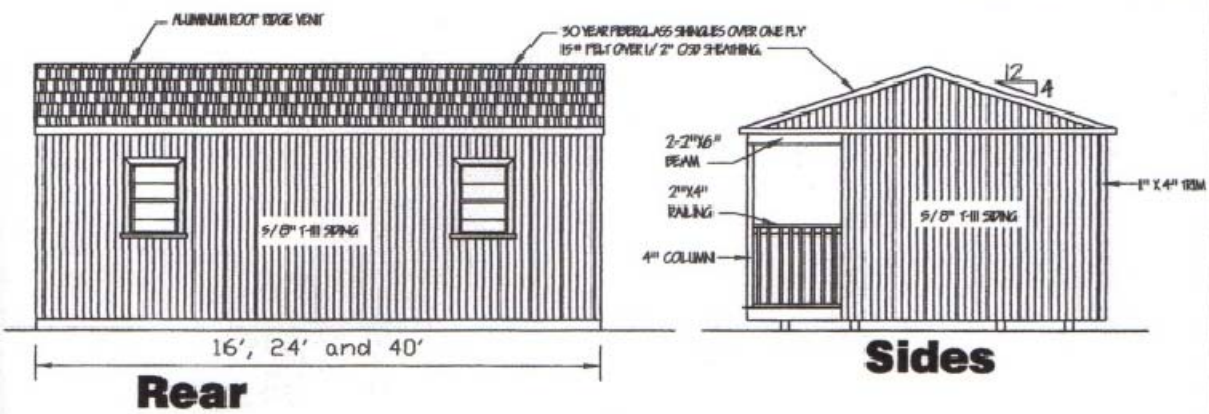
Graceland Portable Building  
16' X 24' Side Porch Cabin

Mark & Lae Begue

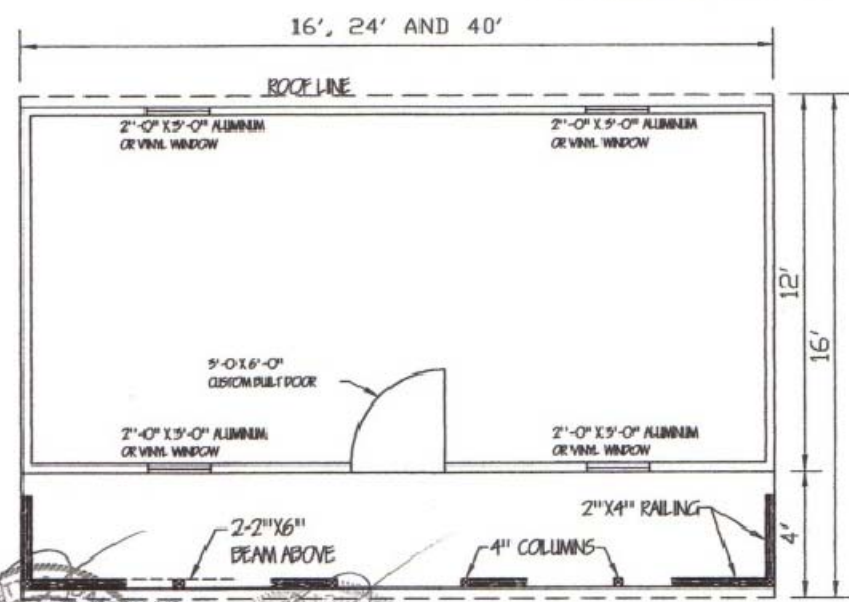
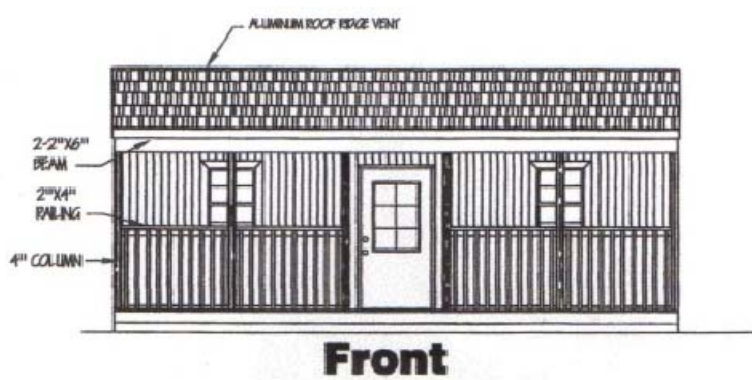
Note: Scale is as stated if  
printed on Paper size 11 x 17 B

**ROOF SHEATHING**  
 TRUSSES 16" O.C. 1/2" OSB  
 TRUSSES 24" O.C. 5/8" OSB

**ROOF VENT**  
 ALUMINUM RIDGE CAP W/ SCREEN  
 METAL 26 GAUGE RIDGE CAP W/ SCREEN BELOW  
 FASTENERS SHALL COMPLY WITH TABLE R602.5(1) AND SHALL BE GALVANIZED KING STAKE.



NOTE:  
 16'x24' Model



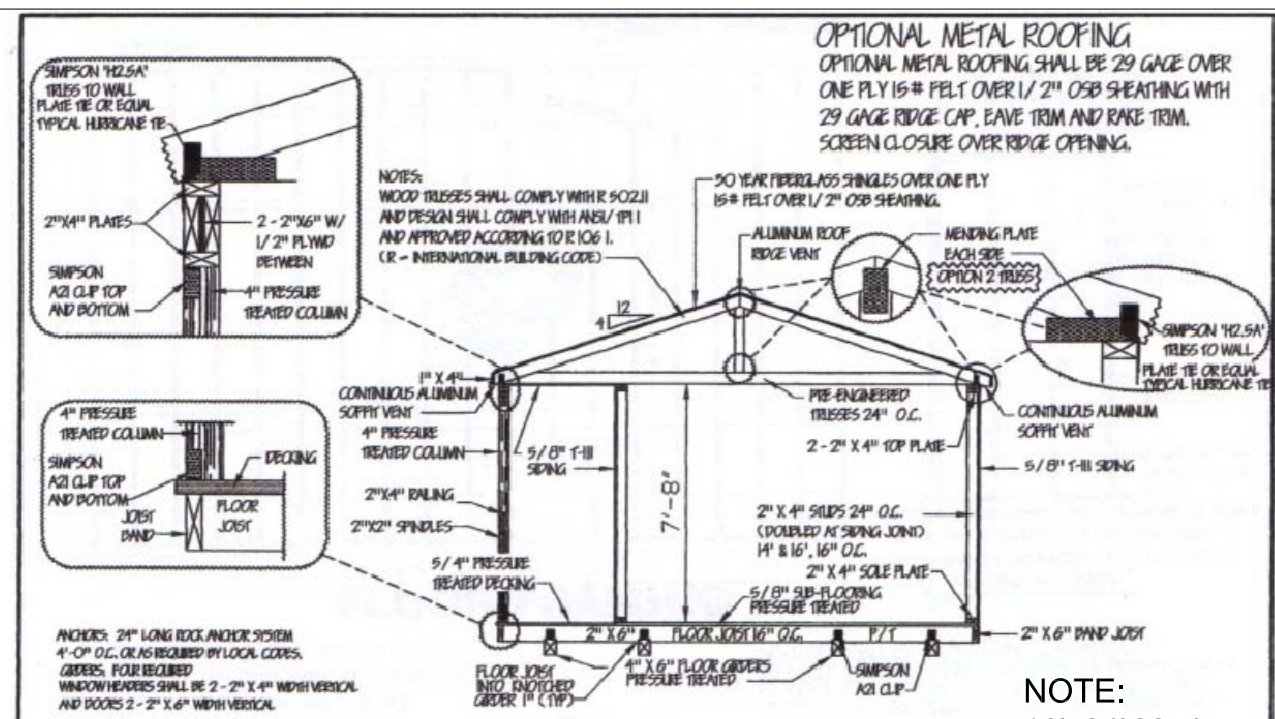
**Side Porch Cabin**

**WIND CERTIFICATION**  
 WIND EXPOSURE CATEGORY 'C'  
 BASIC WIND SPEED (3 SECOND GUST) 150 MPH.

**DAMMON ENGINEERING**  
 1095 FLORIDA AVE.  
 SLIDELL, LOUISIANA  
 985 - 649 - 5892



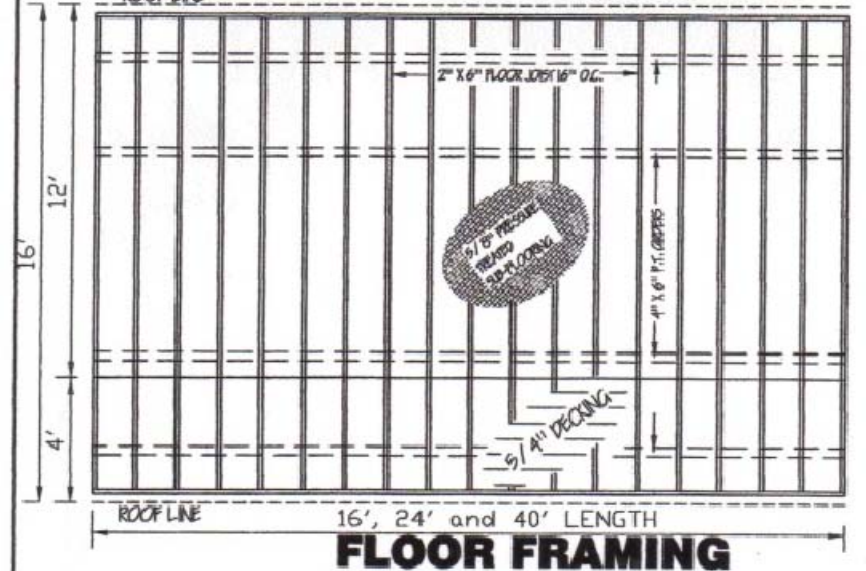
**doug's GRACELAND PROPERTIES LLC**  
 P.O. BOX 665  
 CUNNINGHAM, KY 42055  
 601 - 799 - 4545  
 Copyright (C) 2008 by Graceland Properties LLC  
 All Rights Reserved, including the rights of reproduction in whole or in part in any form.



**OPTIONAL METAL ROOFING**  
 OPTIONAL METAL ROOFING SHALL BE 29 GAUGE OVER ONE PLY 15# FELT OVER 1/2" OSB SHEATHING WITH 29 GAUGE RIDGE CAP, EAVE TRIM AND RAKE TRIM. SCREEN CLOSURE OVER RIDGE OPENING.

**Typical Section**

NOTE:  
 16'x24' Model



**FLOOR FRAMING**

NOTE: THE UTILITY FLOORING, WALLS AND ROOF ARE DESIGNED TO COMPLY WITH THE 2003, 2006 AND 2009 INTERNATIONAL BUILDING AND INTERNATIONAL RESIDENTIAL CODES. THEY ARE NOT INTENDED FOR RESIDENTIAL USE. FOR RESIDENTIAL USAGE 'ALL' STATE AND LOCAL CODES MUST BE MET INCLUDING BUT NOT LIMITED TO SIZES, OPENINGS, CEILING HEIGHTS, ELECTRICAL, PLUMBING ETC.

MEASURES SHALL BE TAKEN DURING CONSTRUCTION TO INSURE THAT ONLY WORKMANSHIP OF THE HIGHEST QUALITY IS PERFORMED AND THAT ONLY THE BEST MATERIALS AND PRACTICES OF CONSTRUCTION ARE USED FOR A QUALITY AND SOUND BUILDING.

- ENGINEERS' NOTES:**
1. FOUNDATIONS PIERS, TE-DOWNS AND ANCHORS SHALL MEET THE REQUIREMENTS OF THE "PERMANENT FOUNDATIONS GUIDE OF MANUFACTURED HOUSING" AS PUBLISHED BY HUD IN SEPTEMBER 1996, AND THE HUD HANDBOOK 4145J REV. 2.
  2. NO FIELD SUPERVISION PROVIDED UNDER THIS SEAL.
  3. NO ADMINISTRATION PROVIDED UNDER THIS SEAL.



**Side Porch Cabin**

**DAMMON ENGINEERING**  
 1095 FLORIDA AVE.  
 SLIDELL, LOUISIANA  
 985 - 649 - 5892



**doug's GRACELAND PROPERTIES LLC**  
 P.O. BOX 665  
 CUNNINGHAM, KY 42055  
 601 - 799 - 4545  
 Copyright (C) 2008 by Graceland Properties LLC  
 All Rights Reserved, including the rights of reproduction in whole or in part in any form.

**Graceland Portable Blding  
 Side Porch Cabin**

Mark & Lae Begue  
 Front Street  
 St. Tammany Parish, LA

Client: Mark Begue

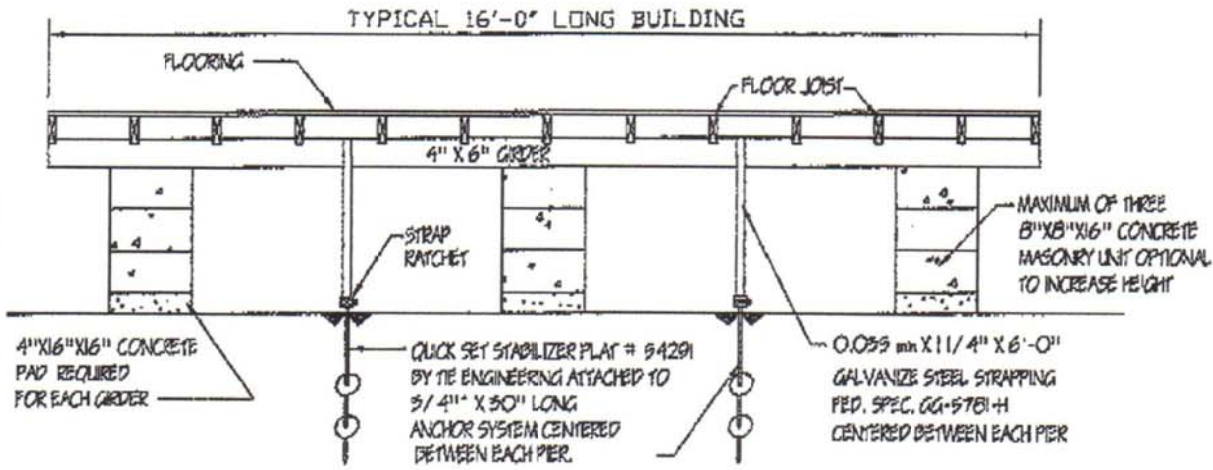
Date:  
 October 24, 2012

Drawn By: KJV

Checked By:  
 Date:

Revisions

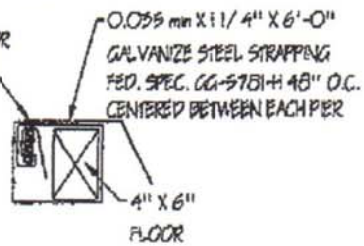
# GRACELAND PORTABLE BUILDINGS TYPICAL ANCHOR AND TIE DOWNS



TYPICAL DETAIL

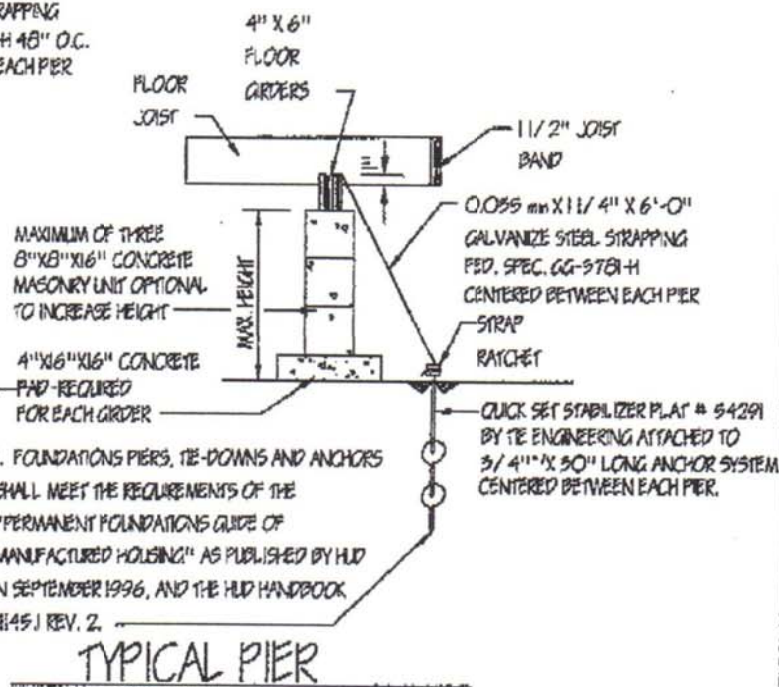
**NOTE:**  
16'x24' Model  
Foundation to include  
one (1) block

THE TIE DOWN ENGINEERED DOUBLE SLOT BUCKLE # 59140 OR EQUAL. REFER TO MANUFACTURERS SPECIFICATIONS FOR INSTALLATION



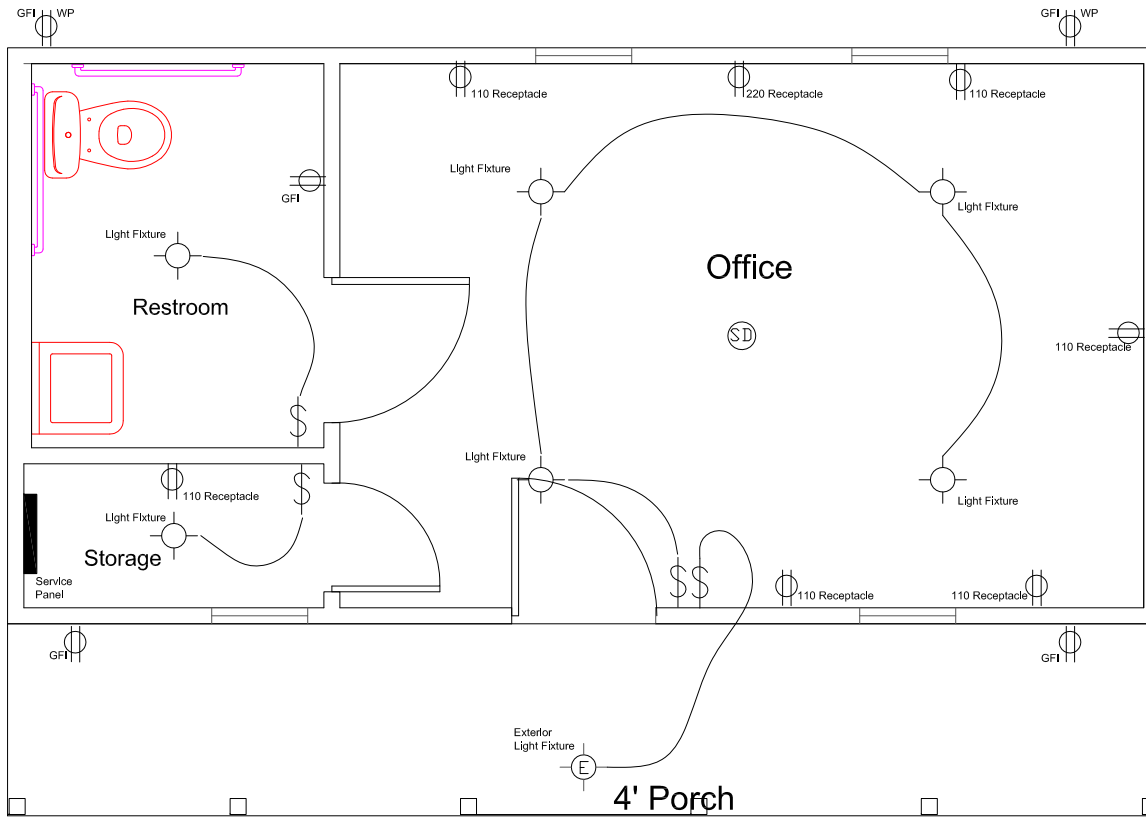
GIRDER TIE DOWN

NOTE: FOUNDATIONS ARE DESIGNED TO COMPLY WITH THE 2003, 2006 AND 2009 INTERNATIONAL BUILDING AND INTERNATIONAL RESIDENTIAL CODES. ALL LOCAL AND STATE CODES MUST ALSO BE MET AS REQUIRED.



1. FOUNDATIONS PIERS, TIE-DOWNS AND ANCHORS SHALL MEET THE REQUIREMENTS OF THE "PERMANENT FOUNDATIONS GUIDE OF MANUFACTURED HOUSING" AS PUBLISHED BY HUD IN SEPTEMBER 1996, AND THE HUD HANDBOOK 4145.1 REV. 2.

TYPICAL PIER



## Electrical Plan

Scale: 1/4" = 1'-0"

### Electrical Systems:

1. Provide 20 ft. of No. 4 copper wire as v ground electrode.
2. Electrical service is to be 200 amp service, 120/240 volt, 1 phase.
3. Provide separate 20 amp circuits to computer and air conditioner.
4. Provide 20 amp circuits to Office, restroom and exterior.
5. Install ground fault current interrupter on exterior and restroom convenience outlets.
6. Install light in storage closet 18" minimum horizontal from any shelf.
7. Provide a ventilation fan capable of producing a change of air every 12 minutes for restroom.
8. Provide smoke detector alarm conforming to Section 1210(A) U.B.C. and local building codes as required.
9. Install CO2 Detector.
10. Consult with contractor and owner for all final light fixture and light placement and details.

### AC unit:

220 - 7,000 BTU Through the Wall Heating and Cooling Unit

### ELECTRICAL SCHEDULE

NUMBER	QTY	DESCRIPTION
E01	1	2 220V
E02	6	DUPLEX
E03	4	GFCI DUPLEX (WEATHERPROOF)
E04	1	EXHAUST
E05	1	GFCI
E06	1	SMOKE DETECTOR

**DAMMON ENGINEERING**  
1096 FLORIDA AVE.  
SLIDELL, LOUISIANA

985 - 649 - 5832



**Doug's**  
plan  
Service

**GRACELAND PROPERTIES LLC**  
P.O. BOX 665  
CUNNINGHAM, KY 42055  
601-799-4545

Copyright (C) 2009 by Graceland Properties LLC  
All Rights Reserved, including the rights of reproduction in whole or in part in any form.

Graceland Portable Building  
Side Porch Cabin

Mark & Lae Begue  
Front Street  
St. Tammany Parish, LA

Client: Mark Begue

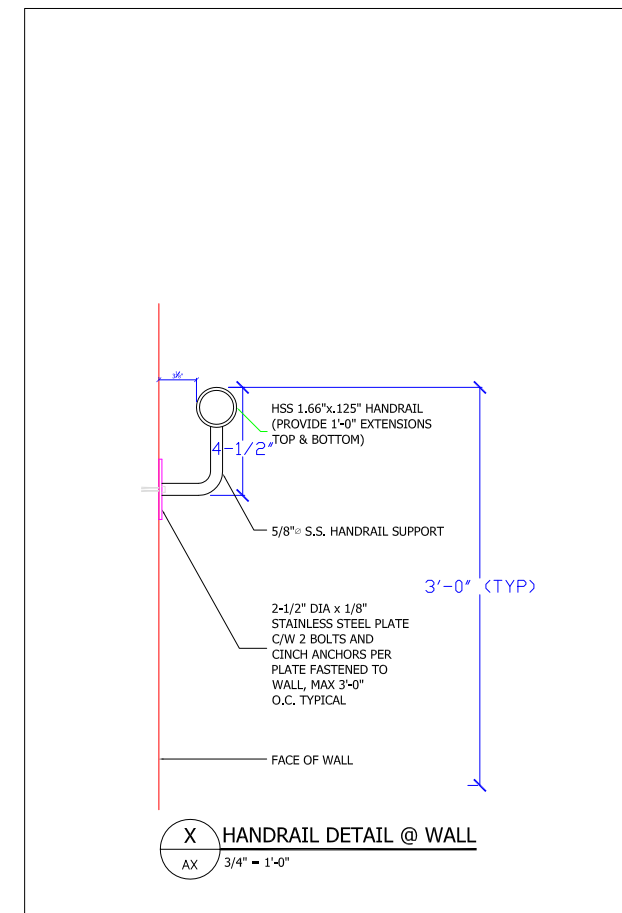
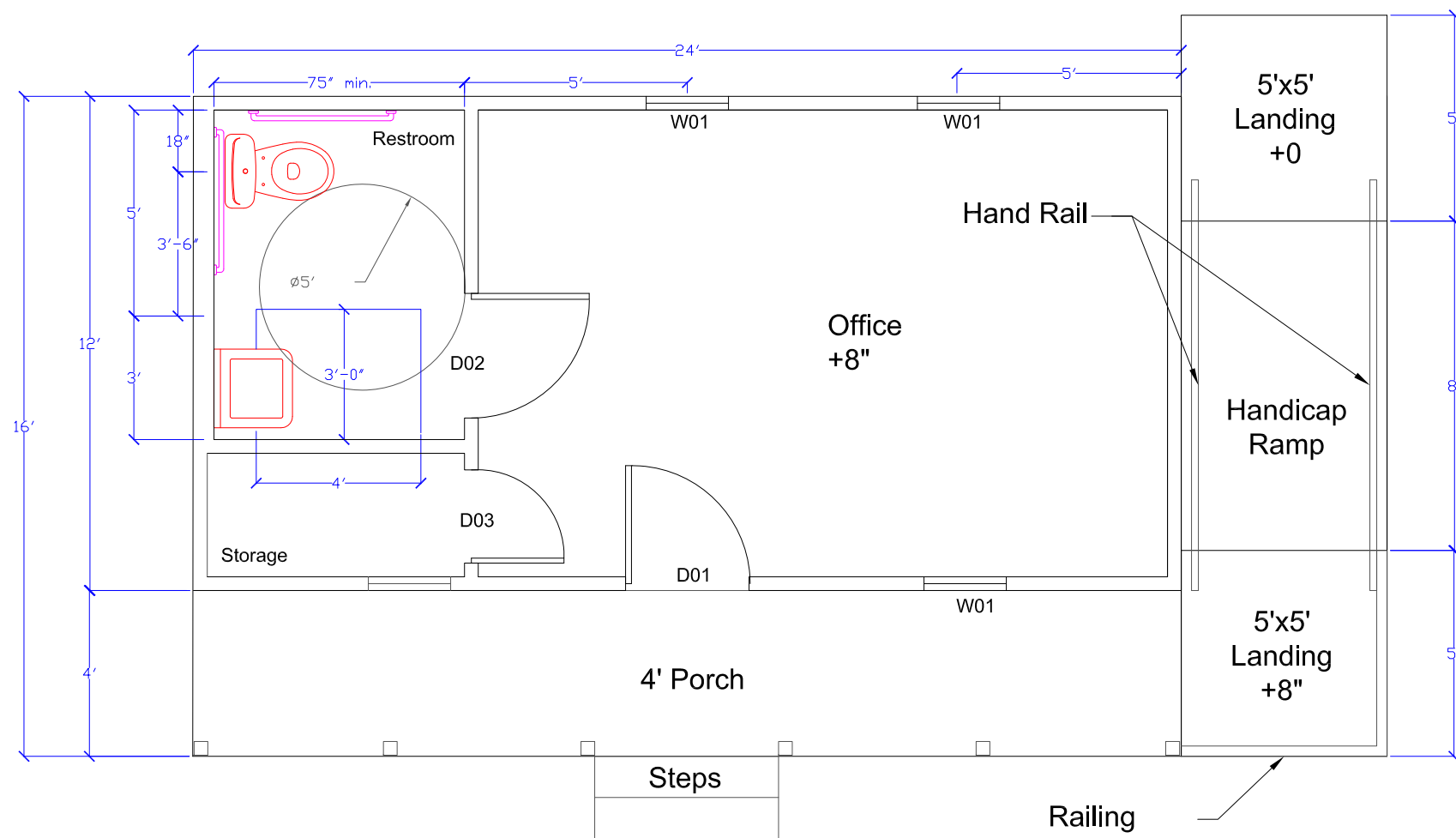
Date:  
October 24, 2012

Drawn By: KJV

Checked By:  
Date:

Revisions

Graceland Portable Building  
Side Porch Cabin  
Mark & Lae Begue  
Front Street  
St. Tammany Parish, LA



○ Floor Plan  
Scale: 1/2" = 1'-0"

FINISHING				
Room	Walls	Ceiling	Floor	FINISH
Office	PANELING	PLYWOOD	PLYWOOD	PAINTED
RESTROOM	PANELING	PLYWOOD	PLYWOOD	PAINTED
STORAGE	PANELING	PLYWOOD	PLYWOOD	PAINTED

WINDOW SCHEDULE						
NUMBER	QTY	SIZE	DIMENSIONS	WIDTH	HEIGHT	DESCRIPTION
W01	4	2030	24"X36"	24 "	36 "	SINGLE HUNG

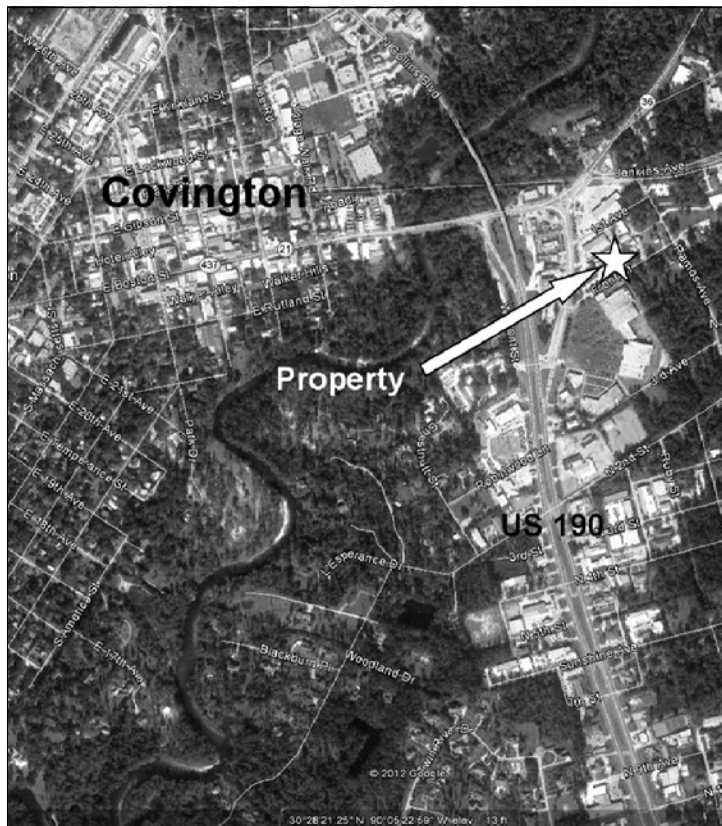
DOOR SCHEDULE						
NUMBER	QTY	SIZE	DIMENSIONS	WIDTH	HEIGHT	DESCRIPTION
D01	1	3068	36"X80"X1 3/4"	36 "	80"	EXTERIOR
D02	1	3068	36"X80"X1 3/8"	36 "	80"	INTERIOR
D03	1	2368	27"X80"X1 3/8"	27 "	80"	INTERIOR

**NOTE:**  
This is a Graceland Portable Building.  
Interior walls and restroom are additions to the 16'x24' Graceland Portable Building documents plans.






Client: Mark Begue  
Date: October 24, 2012

Drawn By: KJV  
Checked By:  
Date:

Revisions

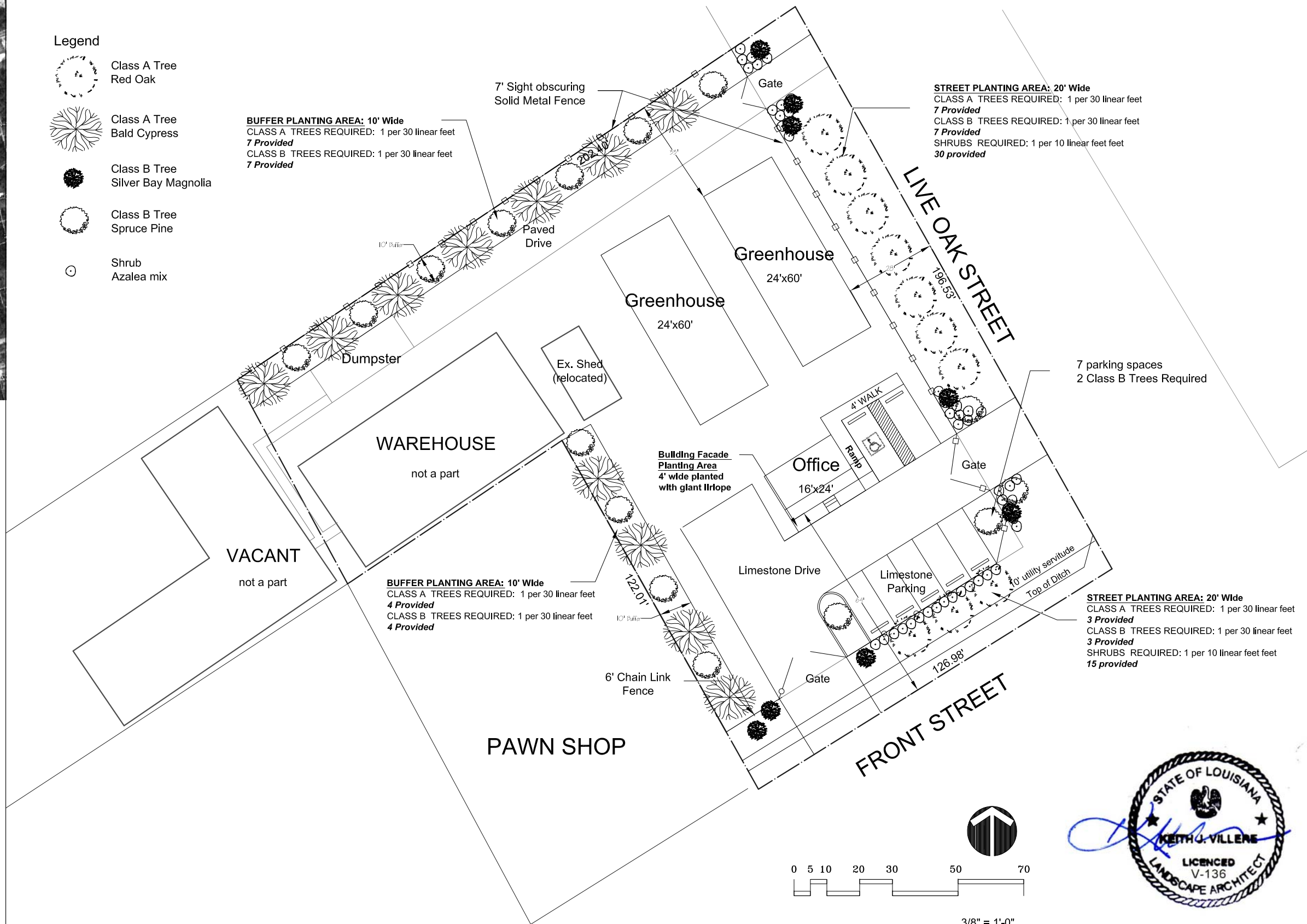


**Legend**

-  Class A Tree  
Red Oak
-  Class A Tree  
Bald Cypress
-  Class B Tree  
Silver Bay Magnolia
-  Class B Tree  
Spruce Pine
-  Shrub  
Azalea mix

**BUFFER PLANTING AREA: 10' Wide**  
 CLASS A TREES REQUIRED: 1 per 30 linear feet  
**7 Provided**  
 CLASS B TREES REQUIRED: 1 per 30 linear feet  
**7 Provided**

**STREET PLANTING AREA: 20' Wide**  
 CLASS A TREES REQUIRED: 1 per 30 linear feet  
**7 Provided**  
 CLASS B TREES REQUIRED: 1 per 30 linear feet  
**7 Provided**  
 SHRUBS REQUIRED: 1 per 10 linear feet feet  
**30 provided**



**WAREHOUSE**  
not a part

**VACANT**  
not a part

**PAWN SHOP**

**Greenhouse**  
24'x60'

**Office**  
16'x24'

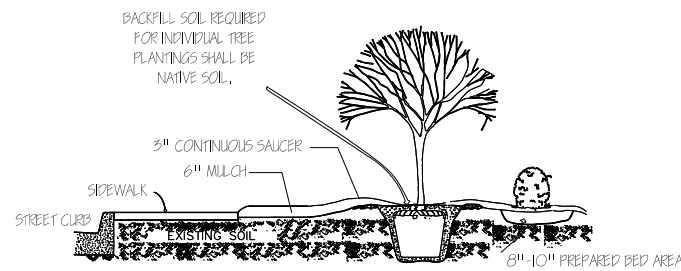
**Limestone Parking**

**FRONT STREET**

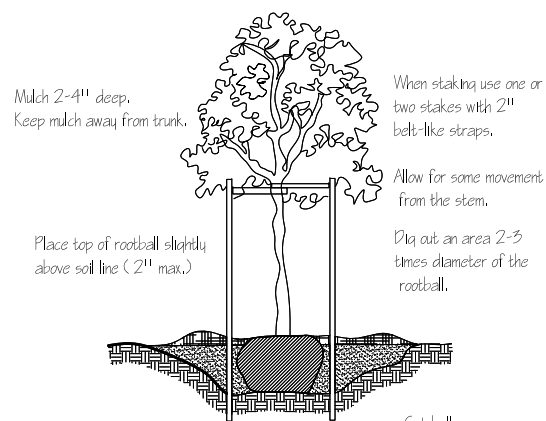
**LIVE OAK STREET**

7 parking spaces  
2 Class B Trees Required

**STREET PLANTING AREA: 20' Wide**  
 CLASS A TREES REQUIRED: 1 per 30 linear feet  
**3 Provided**  
 CLASS B TREES REQUIRED: 1 per 30 linear feet  
**3 Provided**  
 SHRUBS REQUIRED: 1 per 10 linear feet feet  
**15 provided**



**TYPICAL SECTION of CURB and BED AREA**



**Tree Planting Detail (NTS)**

