

DAMMON
ENGINEERING, INC.
EMMETT
DAMMON

ARCHITECT
ROBERT
WILTSE

1095 FLORIDA AVENUE
SLIDELL, LA. 70458
985-649-5832

WEBSITE:
WWW.DAMMONENGINEERING.COM
EMAIL:
DAMMONENG@BELLSOUTH.NET

ARCHITECTURE
ENGINEERING
STUDIES
PLANNING
INVESTIGATION
EXPERT WITNESS

Karen Zito
1708 Minnesota Ave.
Metairie, LA.

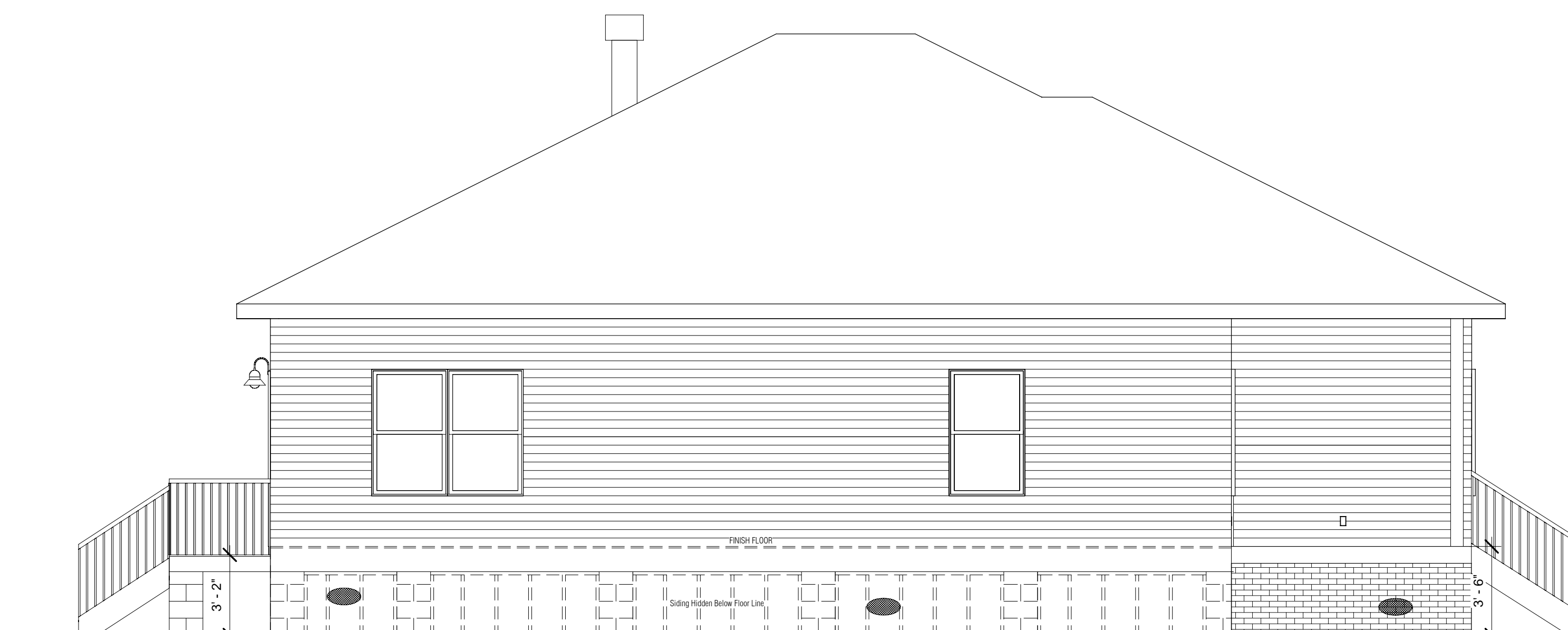
Elevations

A-103

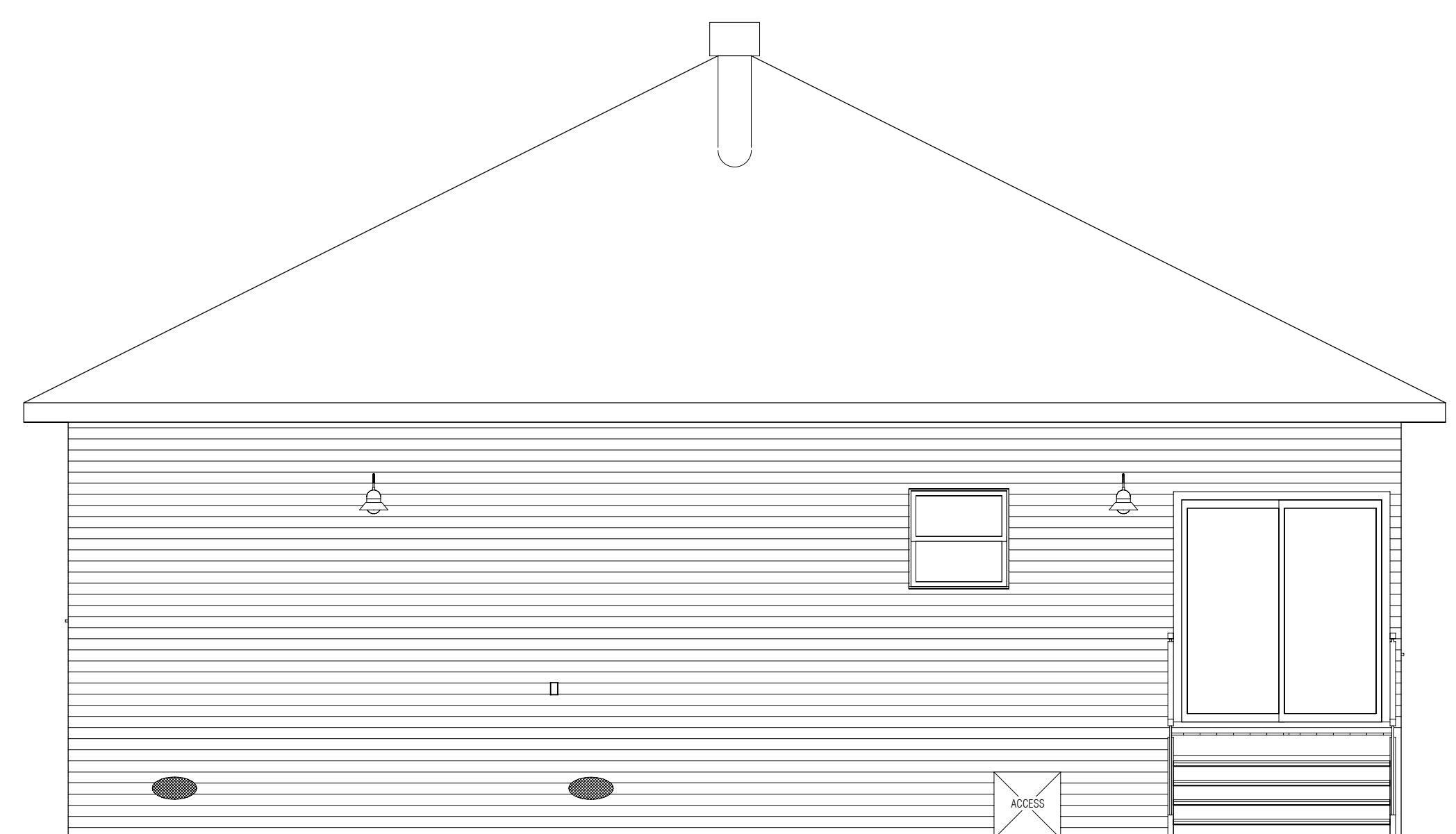
Project No. 0733
Date 11/22/07
Scale 1/4" = 1'-0"



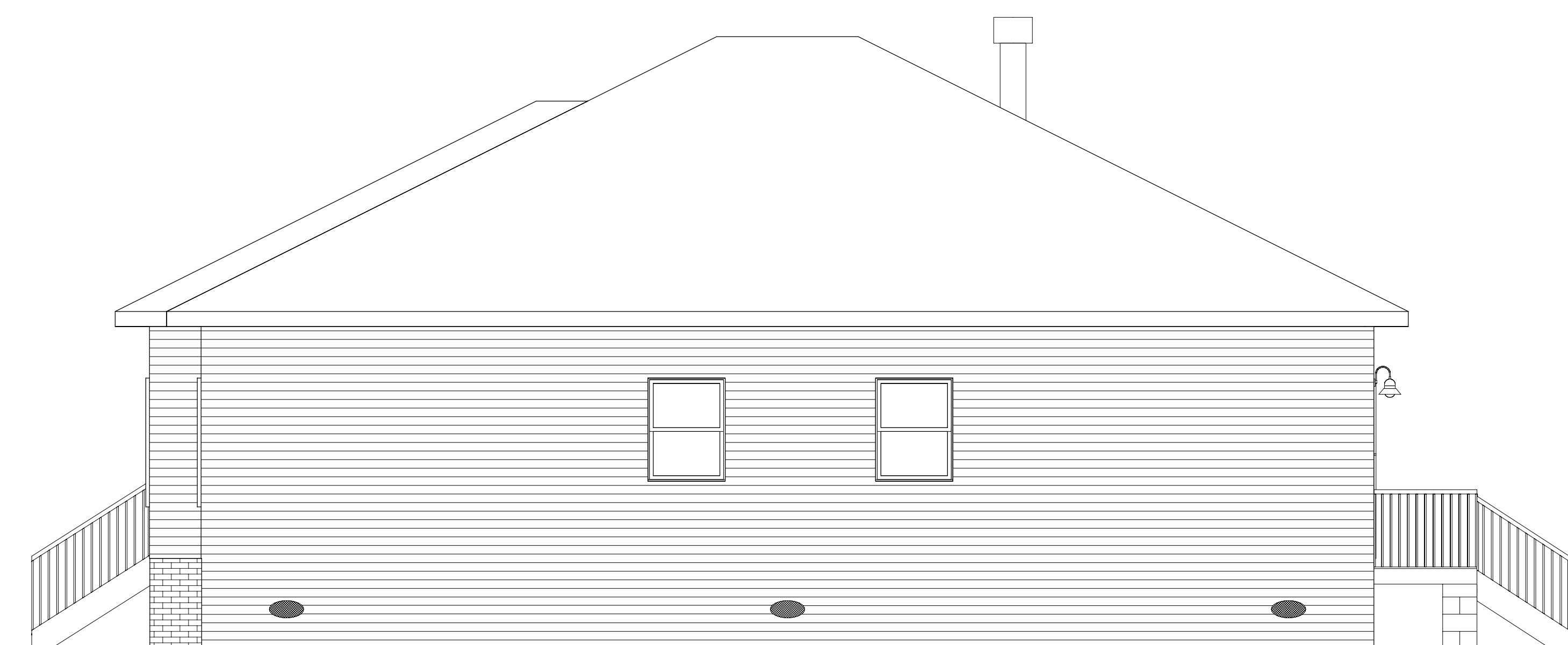
① Front
1/4" = 1'-0"



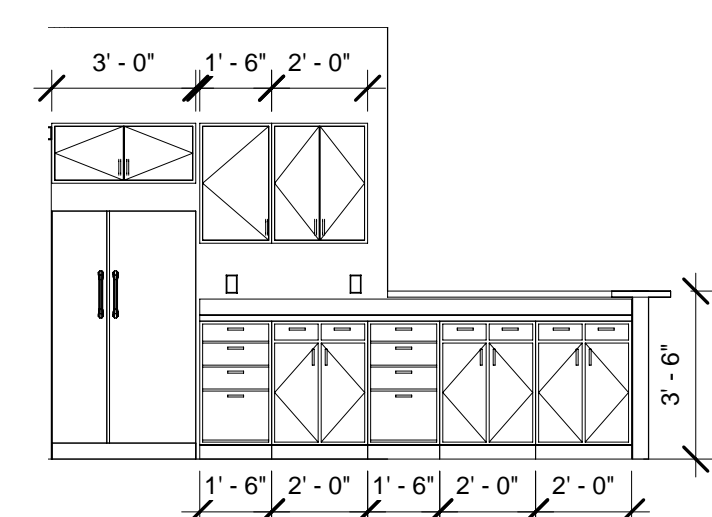
② Left
1/4" = 1'-0"



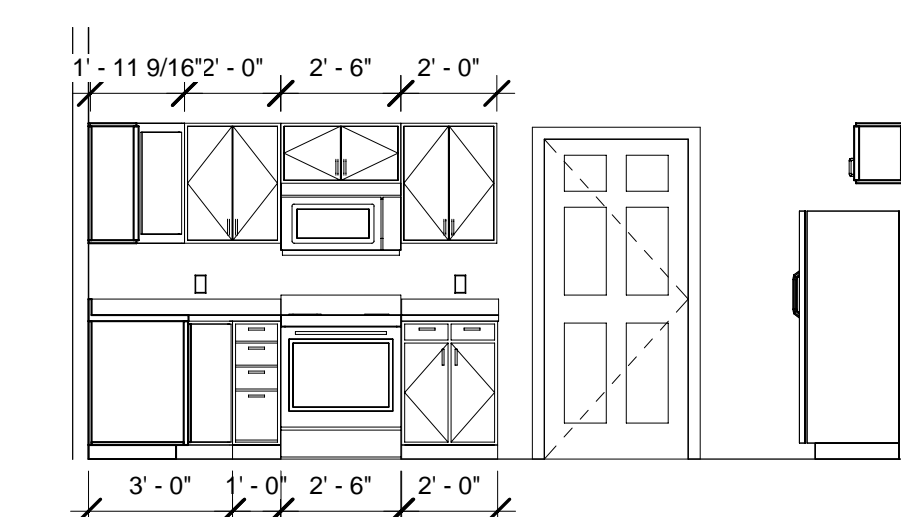
③ Rear
1/4" = 1'-0"



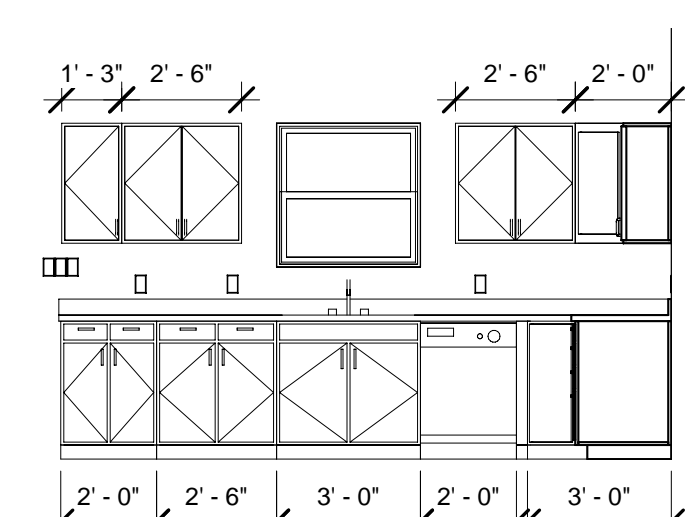
④ Right
1/4" = 1'-0"



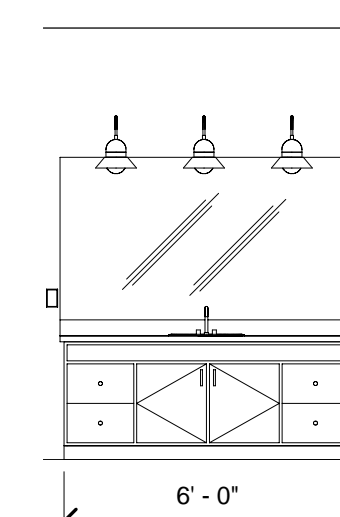
⑤ Kit. "A"
1/4" = 1'-0"



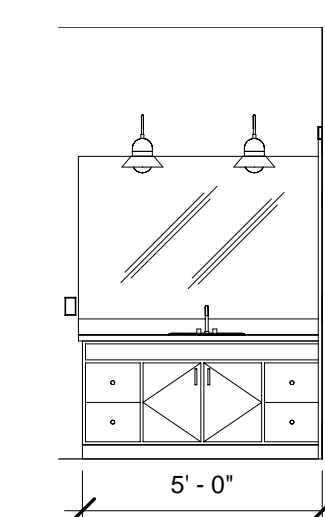
⑥ Kit. "B"
1/4" = 1'-0"



⑦ Kit. "C"
1/4" = 1'-0"



⑧ M/BATH
1/4" = 1'-0"



⑨ BATH
1/4" = 1'-0"