

**DAMMON**  
ENGINEERING, INC.

CHIEF ENGINEER  
EMMETT  
DAMMON, P.E.

CHIEF ARCHITECT  
ROBERT  
WILTSE

1095 FLORIDA AVENUE  
SUDELL, LA. 70459  
OFFICE: 985-649-5832  
FAX: 985-641-5950

WEBSITE:  
WWW.DAMMONENGINEERING.COM  
EMAIL:  
DAMMONING@BELLSOUTH.NET

ARCHITECTURE  
ENGINEERING  
STUDIES  
PLANNING  
INVESTIGATION  
EXPERT WITNESSES

ADDITION TO  
LOUIS NEFF  
LOG HOME AT 21  
LOG CABIN LANE  
SUDELL, LA

ROOF PLAN  
AND  
ROOF FRAMING  
PLAN

REV:

SCALE: AS NOTED

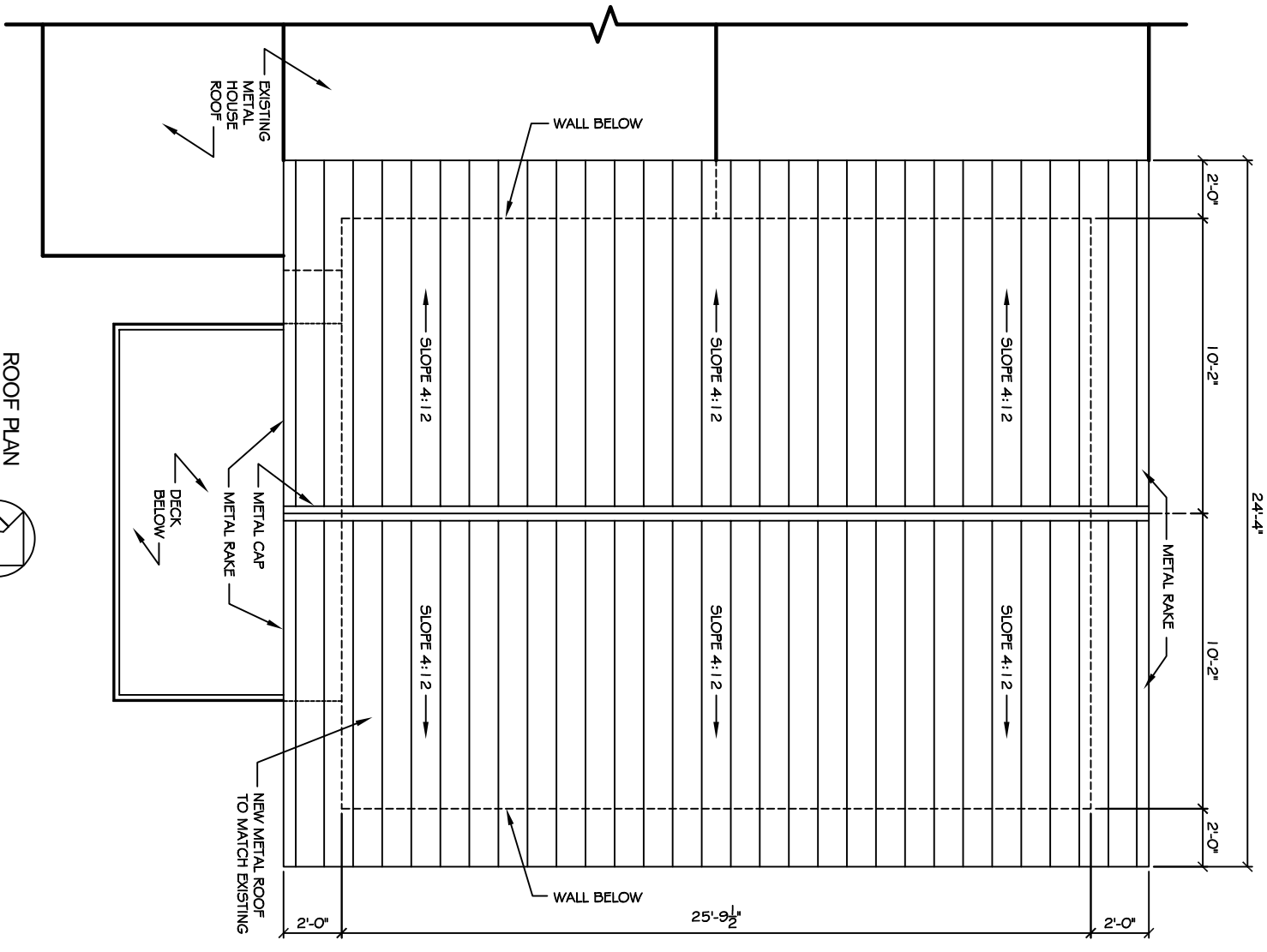
JOB#: 2079

DATE: 10-11-10

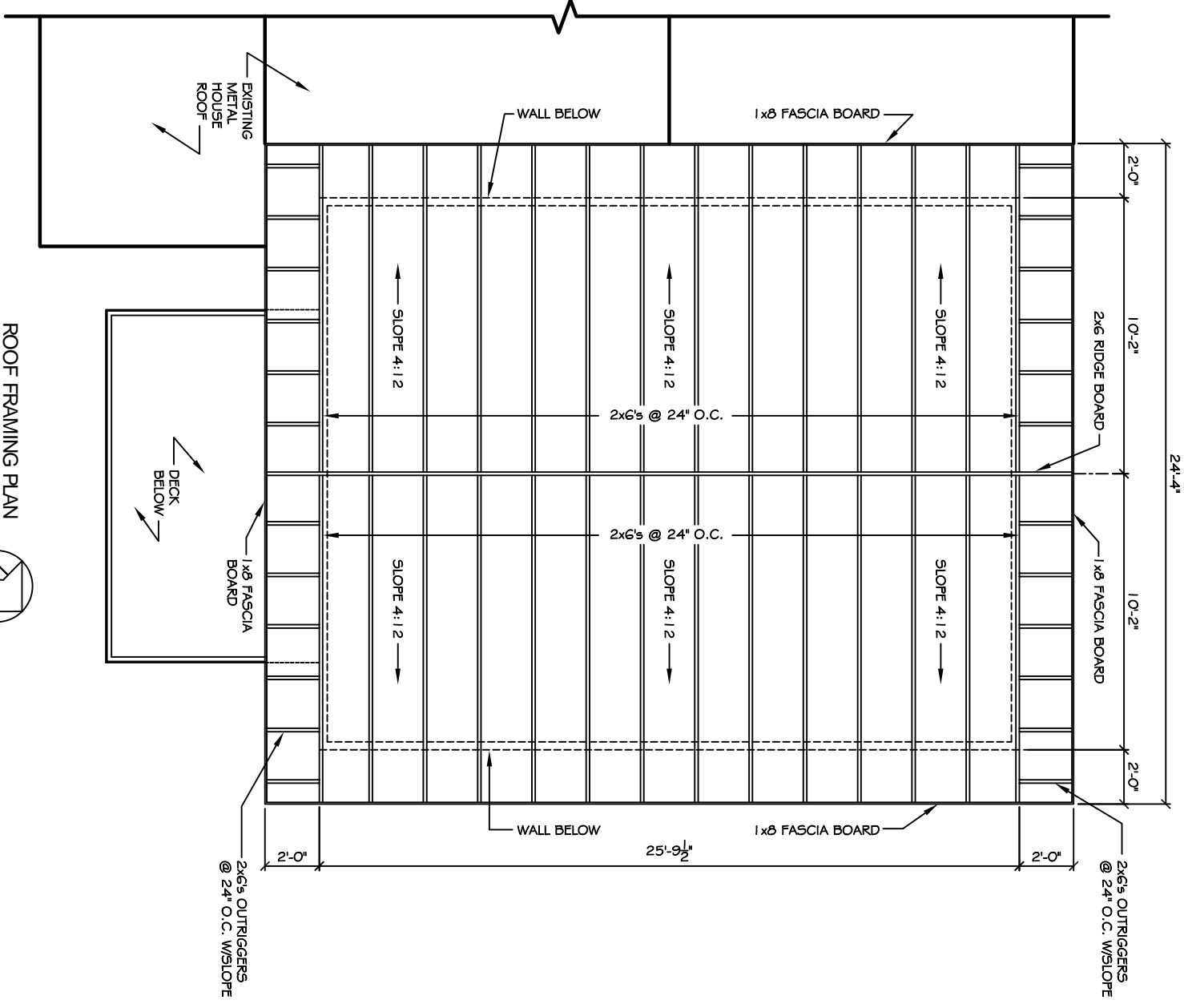
SHEET 10

**F-2**

OF 12



ROOF PLAN  
SCALE 3/8" = 1'



ROOF FRAMING PLAN  
SCALE 3/8" = 1'