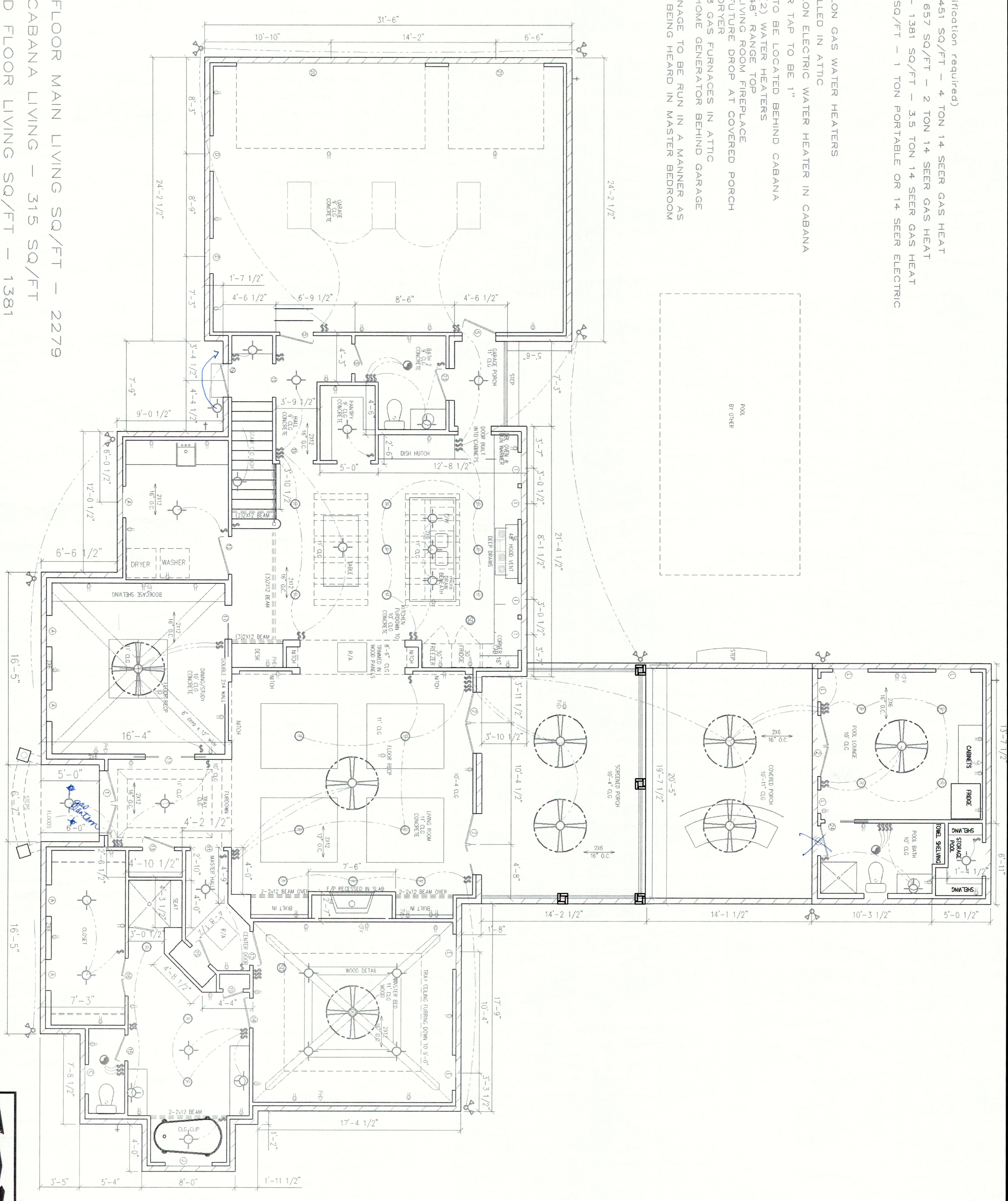


A/C SYSTEMS (Verification required)
 MAIN LIVING - 1451 SQ/FT - 4 TON 14 SEER GAS HEAT
 MASTER WING - 657 SQ/FT - 2 TON 14 SEER GAS HEAT
 SECOND FLOOR - 1381 SQ/FT - 3.5 TON 14 SEER GAS HEAT
 CABANA - 282 SQ/FT - 1 TON PORTABLE OR 14 SEER ELECTRIC

- PLUMBING:
- 2 - 55 GALLON GAS WATER HEATERS
 - TO BE INSTALLED IN ATTIC
 - 1 - 30 GALLON ELECTRIC WATER HEATER IN CABANA
 - WATER METER TAP TO BE 1"
 - POOL PUMP TO BE LOCATED BEHIND CABANA
 - Gas Drops: (2) WATER HEATERS
48" RANGE TOP
LIVING ROOM FIREPLACE
FUTURE DROP AT COVERED PORCH
DRYER
3 GAS FURNACES IN ATTIC
HOME GENERATOR BEHIND GARAGE
 - BATH 3 DRAINAGE TO BE RUN IN A MANNER AS TO PREVENT BEING HEARD IN MASTER BEDROOM

FIRST FLOOR MAIN LIVING SQ/FT - 2279
 POOL CABANA LIVING - 315 SQ/FT
 SECOND FLOOR LIVING SQ/FT - 1381
 GARAGE & PORCH'S SQ/FT - 1375
 TOTAL SQ/FT UNDER BEAM - 5350

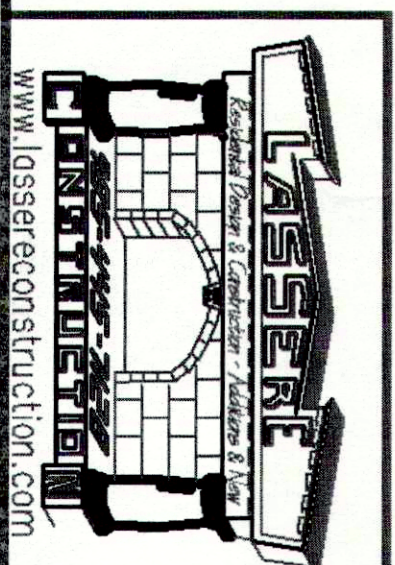


FIRST FLOOR PLAN

1/4" = 1'

MK	SIZE	HEADER	DESCRIPTION
A	2880	9'-4"	WNTL EXTERIOR TERPRED
B	2880	8'-0"	WNTL EXTERIOR TERPRED
C	2840	7'-4"	WNTL
D	3000	7'-0"	WNTL
E	3000	7'-0"	WNTL
F	3000	7'-0"	WNTL
G	3000	7'-0"	WNTL
H	3000	7'-0"	WNTL
I	3000	7'-0"	WNTL
J	4040	8'-0"	WNTL
K	2840	8'-0"	WNTL
L	3070	8'-0"	WNTL
M	2850	7'-10"	WNTL EXTERIOR TERPRED

MK	SIZE	HEADER	DESCRIPTION
1	5'-0"x6'-0"	4 9/16"	EXTENSION WOOD DOUBLE DOOR W/ BALL GLASS LACED TOP
2	5'-0"x6'-0"	4 9/16"	EXTENSION FIBERGLASS DOUBLE DOOR FULL GLASS
3	2'-0"x6'-0"	4 9/16"	EXTENSION FIBERGLASS W/7'-0" TRANSPARENT BALL GLASS
4	2'-0"x6'-0"	4 9/16"	EXTENSION SOLID FIBERGLASS DOOR
5	2'-0"x6'-0"	4 9/16"	EXTENSION FIBERGLASS HALF GLASS
6	2'-0"x6'-0"	4 9/16"	WINDSHIELD DOOR
7	2'-0"x6'-0"	4 9/16"	WINDSHIELD DOOR
8	2'-0"x6'-0"	4 9/16"	WINDSHIELD DOOR
9	2'-0"x6'-0"	4 9/16"	WINDSHIELD DOOR
10	1'-0"x6'-0"	4 9/16"	WINDSHIELD DOOR
11	2'-0"x6'-0"	4 9/16"	WINDSHIELD DOOR
12	2'-0"x6'-0"	4 9/16"	WINDSHIELD DOOR
13	2'-0"x6'-0"	4 9/16"	WINDSHIELD DOOR
14	2'-0"x6'-0"	4 9/16"	WINDSHIELD DOOR
15	2'-0"x6'-0"	4 9/16"	WINDSHIELD DOOR
16	3'-0"x6'-0"	4 9/16"	WINDSHIELD DOOR
17	4'-0"x6'-0"	8 1/16"	WINDSHIELD DOOR
18	4'-0"x6'-0"	8 1/16"	WINDSHIELD DOOR
19	2'-0"x6'-0"	4 9/16"	WINDSHIELD DOOR
20	18"x9"	4 9/16"	WINDSHIELD DOOR
21	4'-0"x6'-0"	8 1/16"	WINDSHIELD DOOR
22	4'-0"x6'-0"	8 1/16"	WINDSHIELD DOOR
23	2'-0"x6'-0"	4 9/16"	WINDSHIELD DOOR
24	2'-0"x6'-0"	4 9/16"	WINDSHIELD DOOR



RESIDENCE FOR:
PATRICIA & RAY POSECAI
 SCALE: NOTED
 DATE: JULY 15, S.E.L.
 TURTLE CREEK
 SLIDELL, LA
 CONTRACT NUMBER: 985-445-7128
 DRAWN BY: SCOTT LASSERE
 SHEET: 2 OF 5