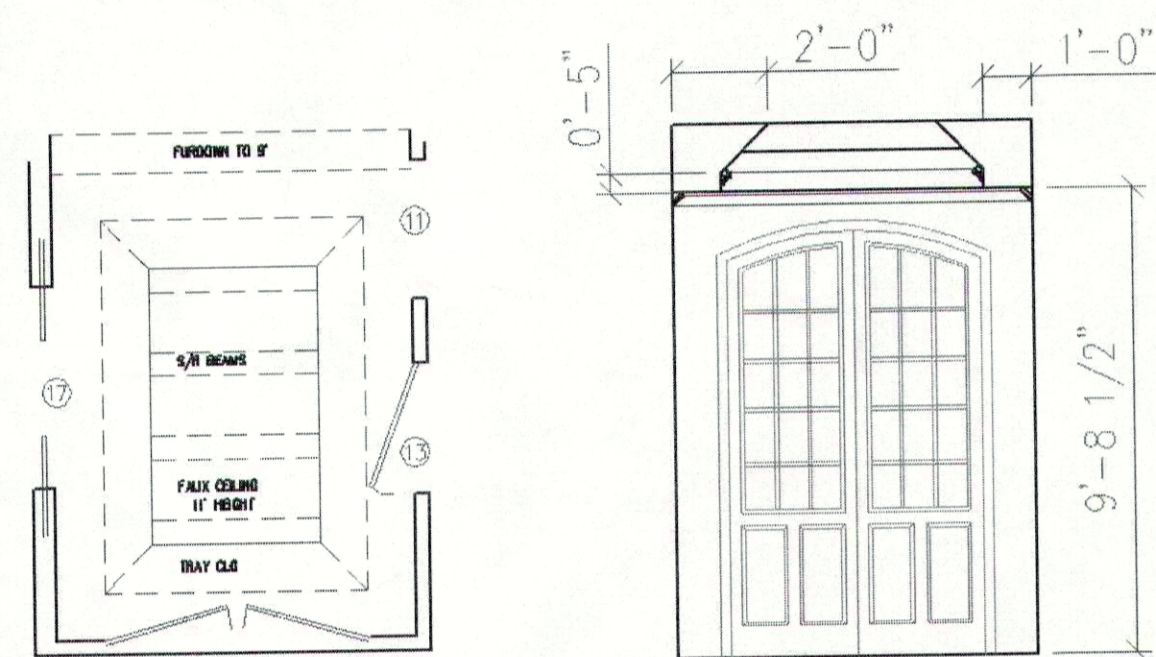


POP-UP 2X8 CROSS BOARDS
SHOWN WITH-OUT 2X8 CROSS

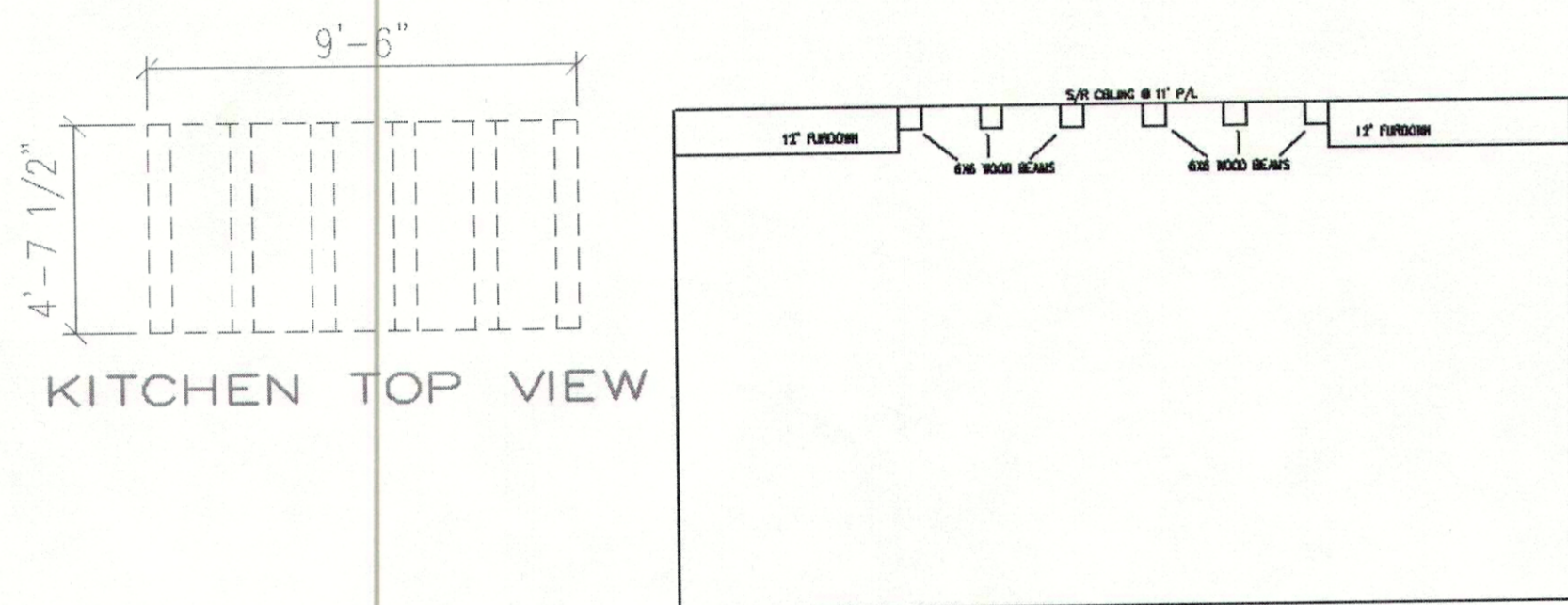
STUDY CEILING

1/4" = 1'



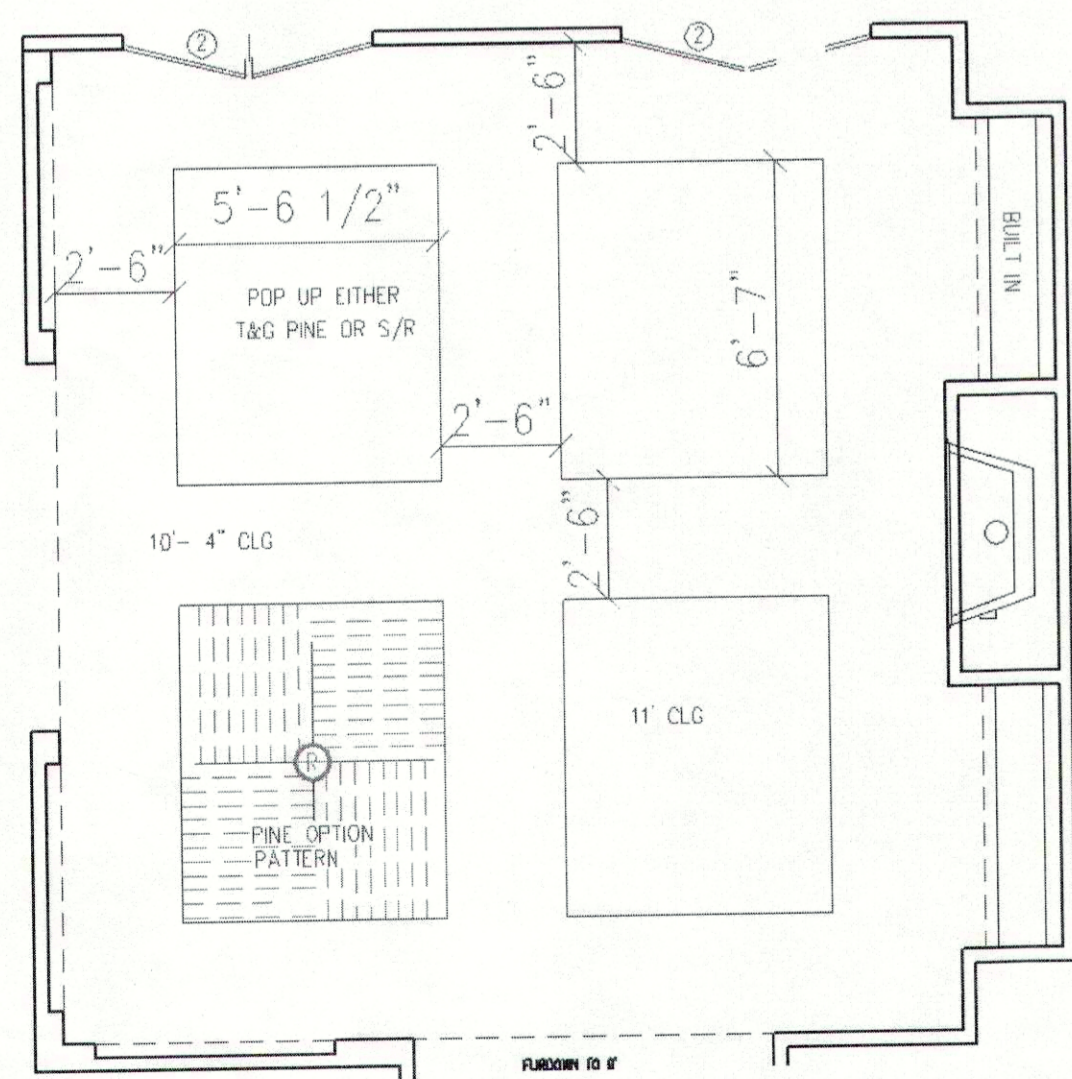
FOYER CEILING

1/4" = 1'



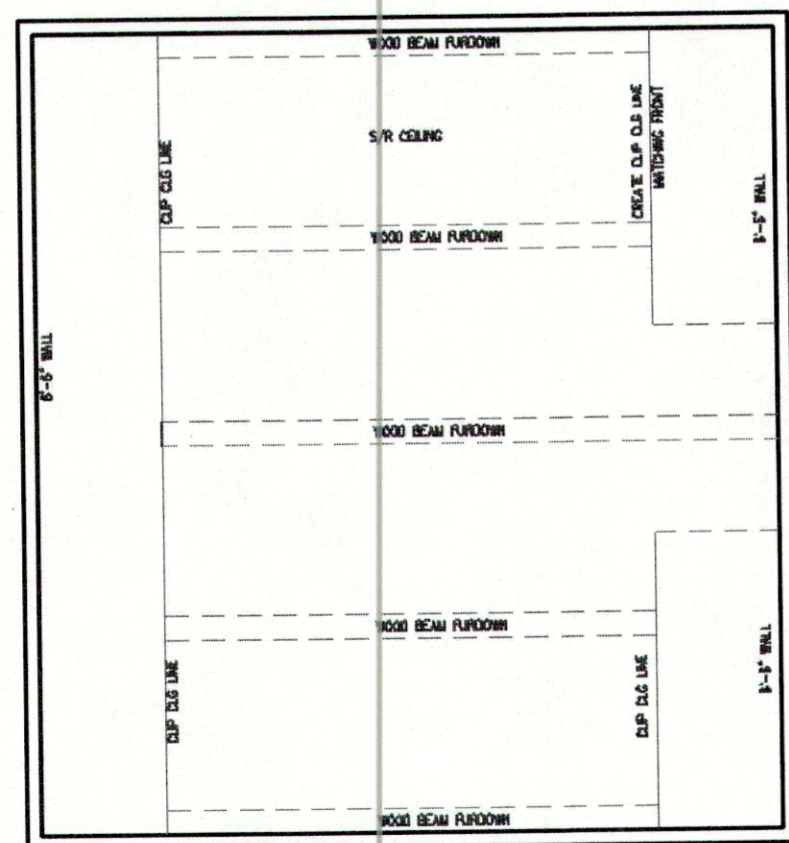
KITCHEN CEILING

1/4" = 1'



LIVING CEILING

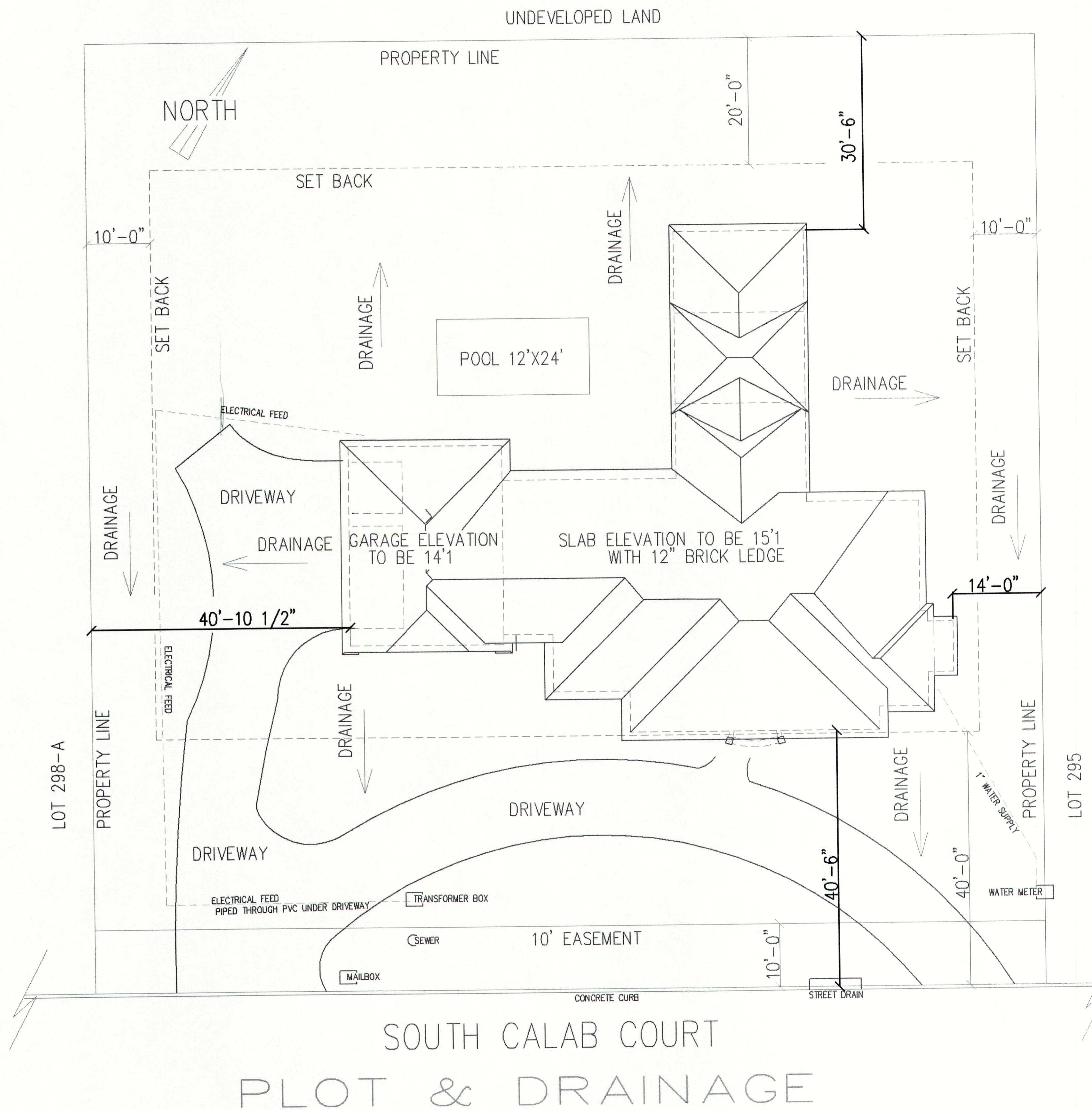
1/4" = 1'



MEDIA TOP VIEW

MEDIA ROOM CEILING

1/4" = 1'



SOUTH CALAB COURT PLOT & DRAINAGE



RESIDENCE FOR: PATRICIA & RAY POSECAI		DRAWN BY: SCOTT LASSERE
SCALE: NOTED	APPROVED BY:	SHEET
DATE: JULY 15	S.E.L.	4 OF 5
TURTLE CREEK SLIDELL LA		
CONTACT NUMBER: 985-445-7128		