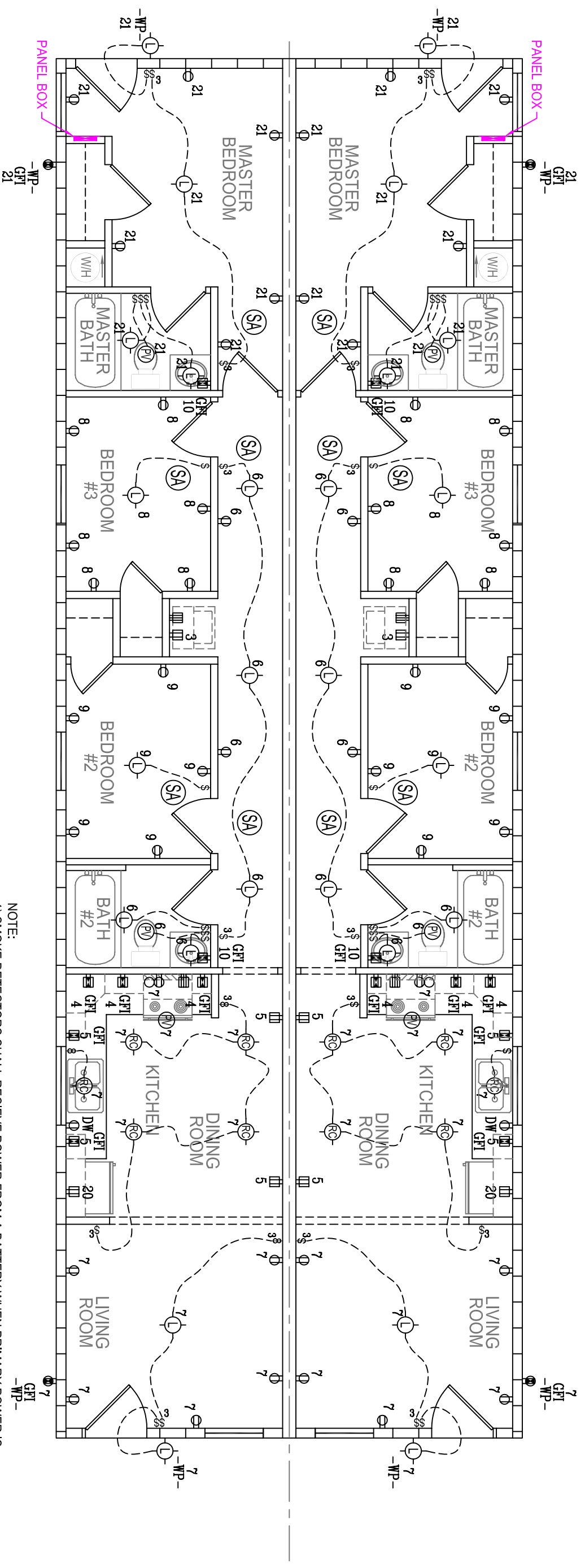


Four Seasons Housing Inc.				
Electrical Schedule				
Circuit	Description	Amps	Wire	Circuit
1	Water Heater	20	12-2 W/G	13 & 14
1 & 2	Water Heater	See W/H Specs	10-2 W/G	15
3	Laundry	20	12-2 W/G	15 & 16
4	Small Appliance	20	12-2 W/G	17 & 18
5	General Appliance	20	12-2 W/G	19
6	General Lighting	15	14-2 W/G	20
7	General Lighting	15	14-2 W/G	20
8	Bedroom Recept	15 Arc-Fault	14-2 W/G	21
9	Bedroom Recept	15 Arc-Fault	14-2 W/G	22
10	Bath Recept	20 GFCI	12-2 W/G	SA
11 & 12	Driver	30	10-3 W/G	DW
				Dishwasher
				15 Arc-Fault
				20
				14-3 W/G
				12-2 W/G



ELECTRICAL LEGEND	
⎓ BREAKER PANEL	⎓ 220V RECEPT
⊕ 15 AMP RECEPT	⊕ SWITCH
⊕ 15 AMP RECEPT DOUBLE BOX	⊕ 3-WAY SWITCH
⊕ 15 AMP RECEPT GFI	⊕ DOUBLE SWITCH
⊕ 20 AMP RECEPT	⊕ LIGHT
⊕ 20 AMP RECEPT DOUBLE BOX	⊕ PENDENT LIGHT
⊕ 20 AMP RECEPT GFI	⊕ POWER VENT
⊕ 20 AMP RECEPT	⊕ SMOKE ALARM
⊕ 20 AMP RECEPT	⊕ THERMOSTAT
⊕ 20 AMP RECEPT	⊕ JUNCTION BOX
⊕ 20 AMP RECEPT	⊕ WEATHERPROOF
⊕ 20 AMP RECEPT	⊕ OPT. TRACK LIGHTING
⊕ 20 AMP RECEPT	⊕ OPT. PHONE JACK
⊕ 20 AMP RECEPT	⊕ RECESSED CAN LIGHT

NOTE:

- 1) SMOKE DETECTORS SHALL RECEIVE POWER FROM A BATTERY WHEN PRIMARY POWER IS INTERRUPTED.
- 2) ALL CIRCUITS USE 200 AMP SERVICE.
- 3) ALL SMOKE DETECTORS ARE EQUIPPED WITH A SILENCER.
- 4) PANEL BOX IS LOCATED IN BASEMENT UNLESS OTHERWISE NOTED.
- 5) ALL SMOKE DETECTORS ARE INTERCONNECTED SO THAT WHEN ONE IS ACTIVATED, THEY ALL ARE.
- 6) RECEPTS & LIGHTS SHOWN ARE CODE MINIMUMS. ADDITIONAL LIGHTS AND RECEPTS CAN BE ADDED IN APPROPRIATE LOCATIONS.
- 7) 20 AMP RECEPT FOR WASHER MUST BE GFCI FOR NEBRASKA. (PER NEC210.8 (A)(7). AND ALL RECEPTS WITHIN 6' OF LAUNDRY TUB SHALL BE GFCI PROTECTED PER NEC 210.8 (A)(7).
- 8) WALL RETURNS WITH ELECTRICAL RECEPTS IN THE SAME WALL CAVITY MUST BE FIRE BLOCKED. FIRE BLOCKING TO BE INSTALLED ABOVE WALL RETURN BEFORE BACK PANNELING. WIRE TO BE LOOPED ABOVE FIRE BLOCKING.

\* FIELD WORK

SEE REVISION NOTE

REV	REVISION	BY	DATE
·	·	·	·
·	·	·	·
·	·	·	·
·	·	·	·
·	·	·	·
·	·	·	·

## ADMIRATION BUILDERS

DRAWN BY: CER DATE: 06/11/07 STATE: LOUISIANA CHECKED BY: MODEL NAME: <b>6076-1</b>	SCALE: THESE DRAWINGS ARE THE PROPERTY OF FOUR SEASONS HOUSING - ADMIRATION BUILDERS AND ARE PROTECTED BY A FEDERAL COPYRIGHT LAW.	PRINT NAME: <b>ELECTRICAL PLAN 1 3.1</b>	PAGE NO: <b>3.1</b>
--	--	---	------------------------

