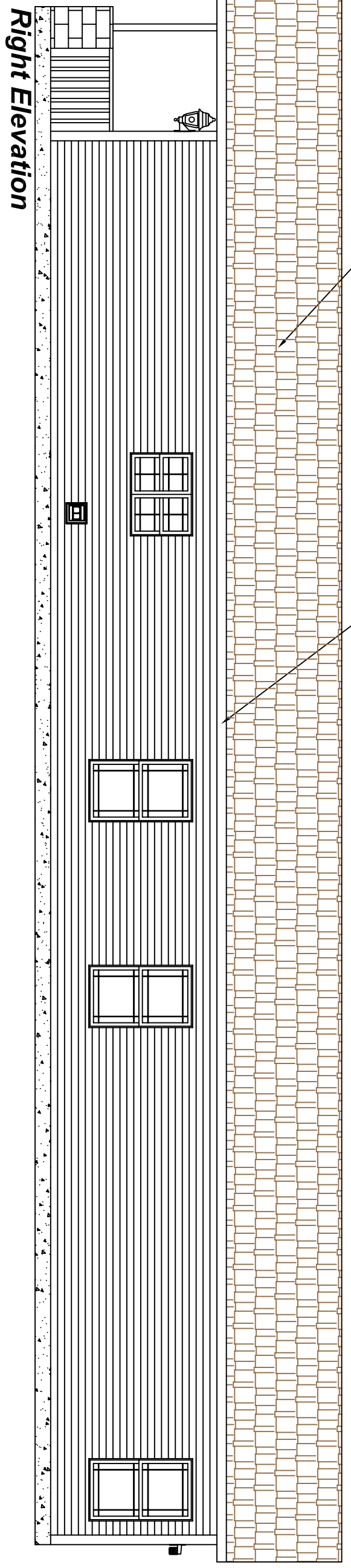
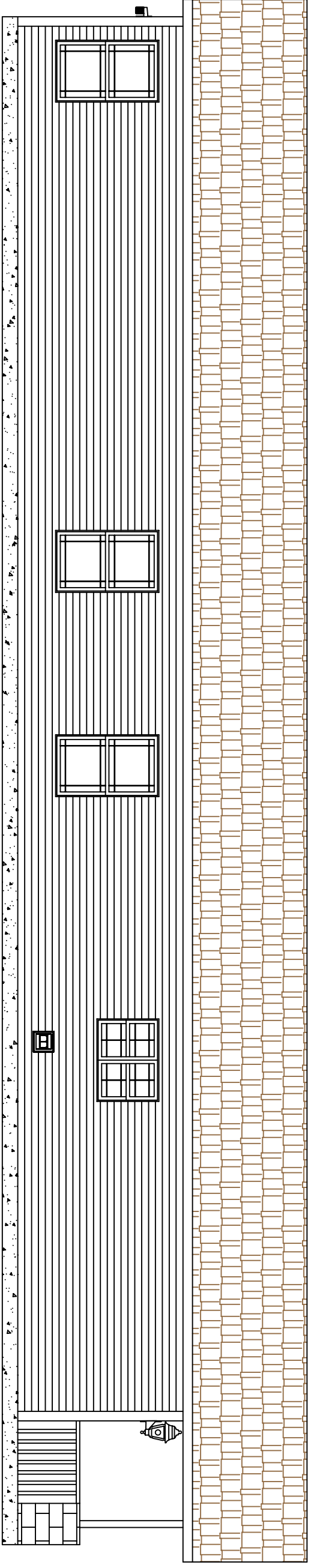


ASPHALT SHINGLES
(REFER TO SYSTEMS PACKAGE FOR DETAILS)

ALUMINUM FASCIA WITH 2 X 6 #3 SPF
FASCIA BOARD (TYP.)



Right Elevation

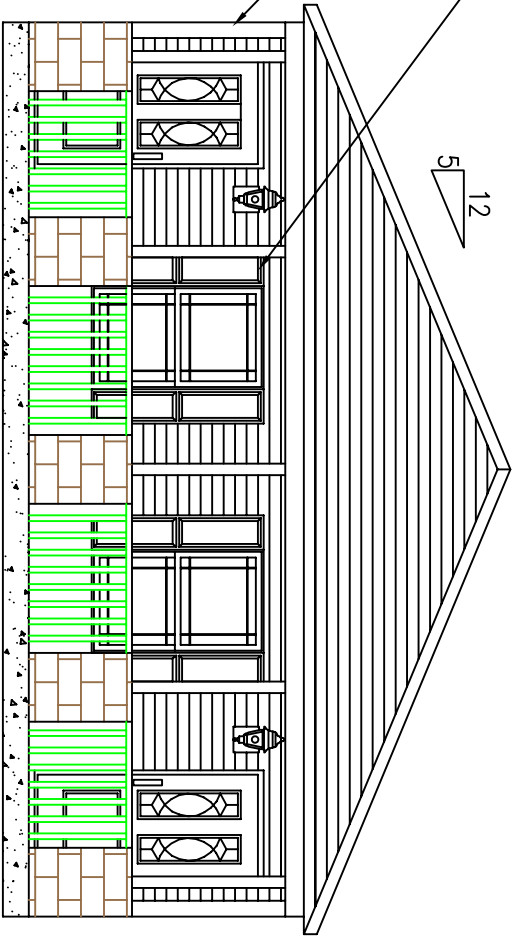
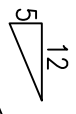


Left Elevation

8'-0" Sidewall, 5/12 Roof Pitch, 24 x 76

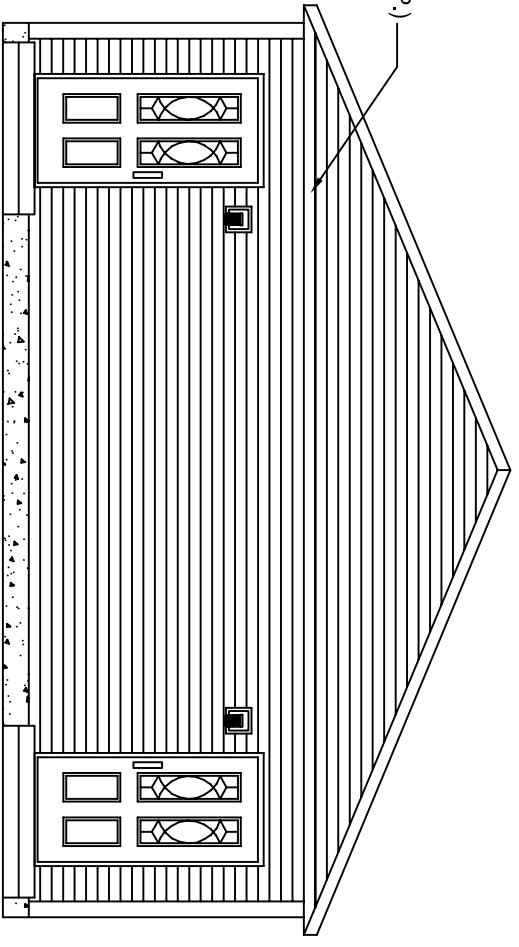
VINYL SHUTTERS(TYP.)

VINYL CORNER POSTS(TYP.)



Front Elevation

VINYL SIDING (TYP.)



Rear Elevation

- NOTES:
 1) GUTTERS/RAIN SPOUTS DONE ON-SITE BY OTHERS.
 2) REFER TO MODULAR SYSTEMS PACKAGE FOR A LIST OF BUILDING MATERIALS AND FOR WINDOWS AND DOORS SPECIFICATIONS.

SEE REVISION NOTE

* FIELD WORK

REV	REVISION	BY	DATE

ADMIRATION BUILDERS

DRAWN BY: CER	SCALE:
DATE: 06/11/07	THESE DRAWINGS ARE THE PROPERTY OF
STATE: LOUISIANA	FOUR SEASONS HOUSING - ADMIRATION
CHECKED BY:	BUILDERS AND ARE PROTECTED BY A
MODEL NAME:	FEDERAL COPYRIGHT LAW.
6076-1	PRINT NAME: ELEVATIONS
	PAGE NO: 1.1

