



DAMMON
ENGINEERING, INC.
EMMETT
DAMMON

ARCHITECT
ROBERT
SOLBERGER

1095 FLORIDA AVENUE
SLIDELL, LA. 70458
985-649-5832

WEBSITE: WWW.DAMMONENGINEERING.COM
EMAIL: DAMMONENG@BELL.SOUTH.NET

ARCHITECTURE
ENGINEERING
STUDIES
PLANNING
INVESTIGATION
EXPERT WITNESS

**ADMIRATION
BUILDERS**

ADMIRATION
BUILDERS
3140-42 N. TONTI
NEW ORLEANS, LA.

**SITE
PLAN**

REV:

SCALE: AS NOTED

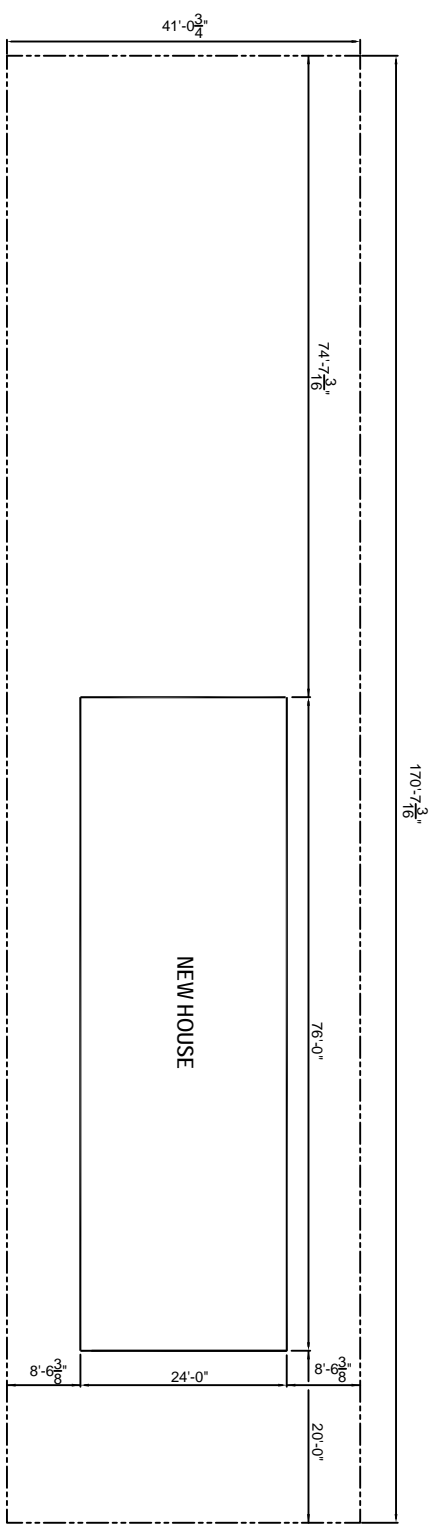
JOB#

DATE: 09-24-07


SHEET

C-1

OF



SITE PLAN
SCALE: 1" = 10'-0"



LEGEND
- - - - - PROPERTY LINE
————— NEW BUILDING OUTLINE

LEGAL DESCRIPTION
SQ. 1156
THIRD DISTRICT - NEW ORLEANS
ORLEANS PARISH, LA