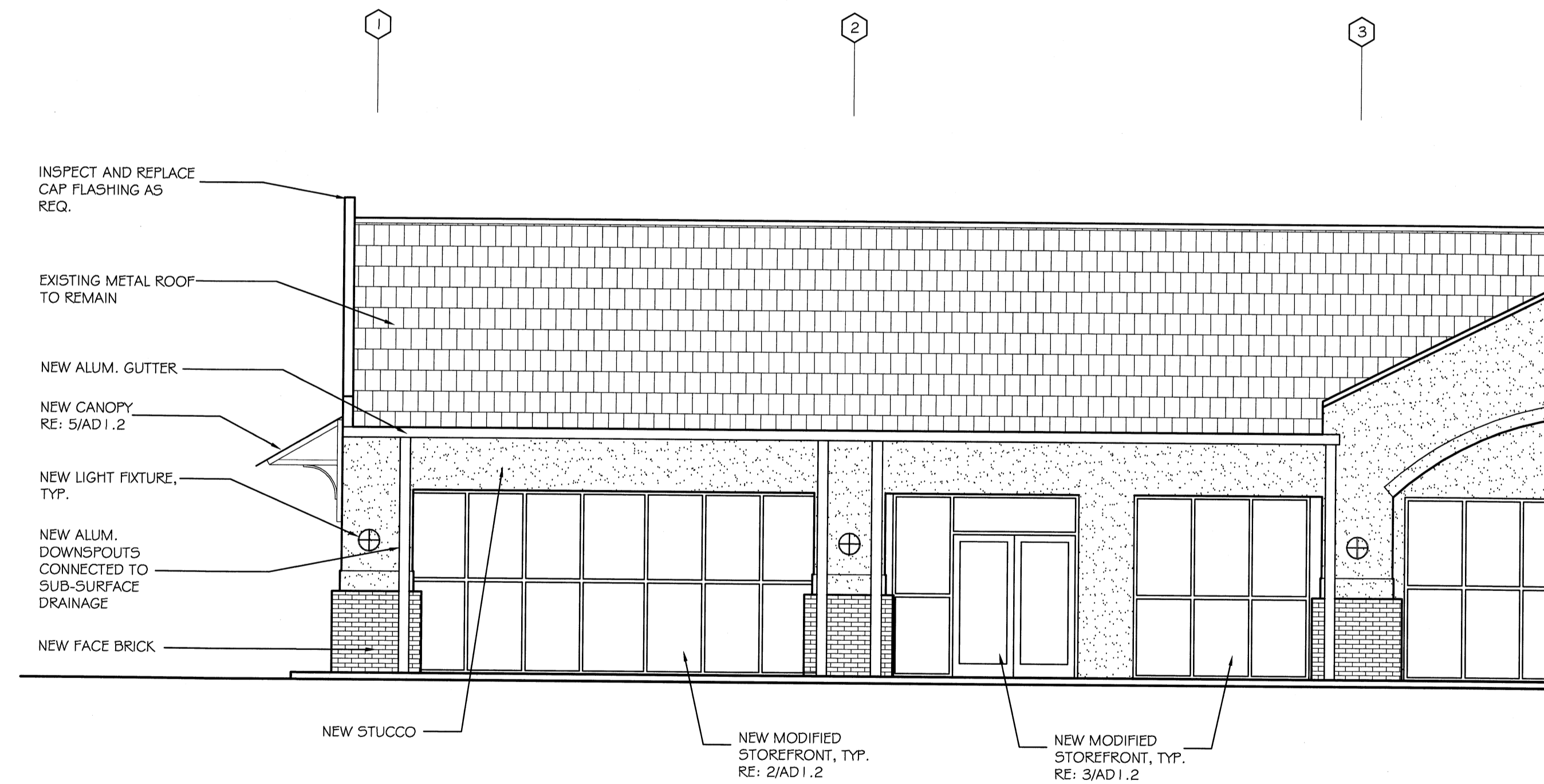
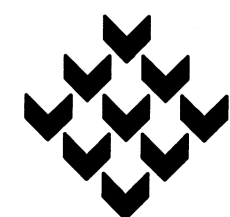


1. NEW STREET/FRONT ELEVATION
SCALE: 3/16" = 1'-0"

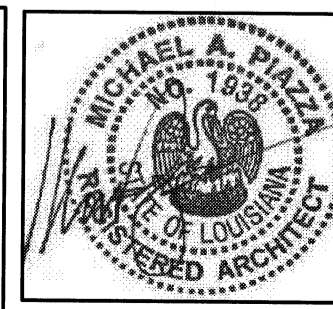


2. NEW RIGHT ELEVATION
SCALE: 3/16" = 1'-0"

project 3507
date 7/5/07
revisions



Piazza Architecture • Planning
Mandeville Louisiana



P.A.P. © 2007

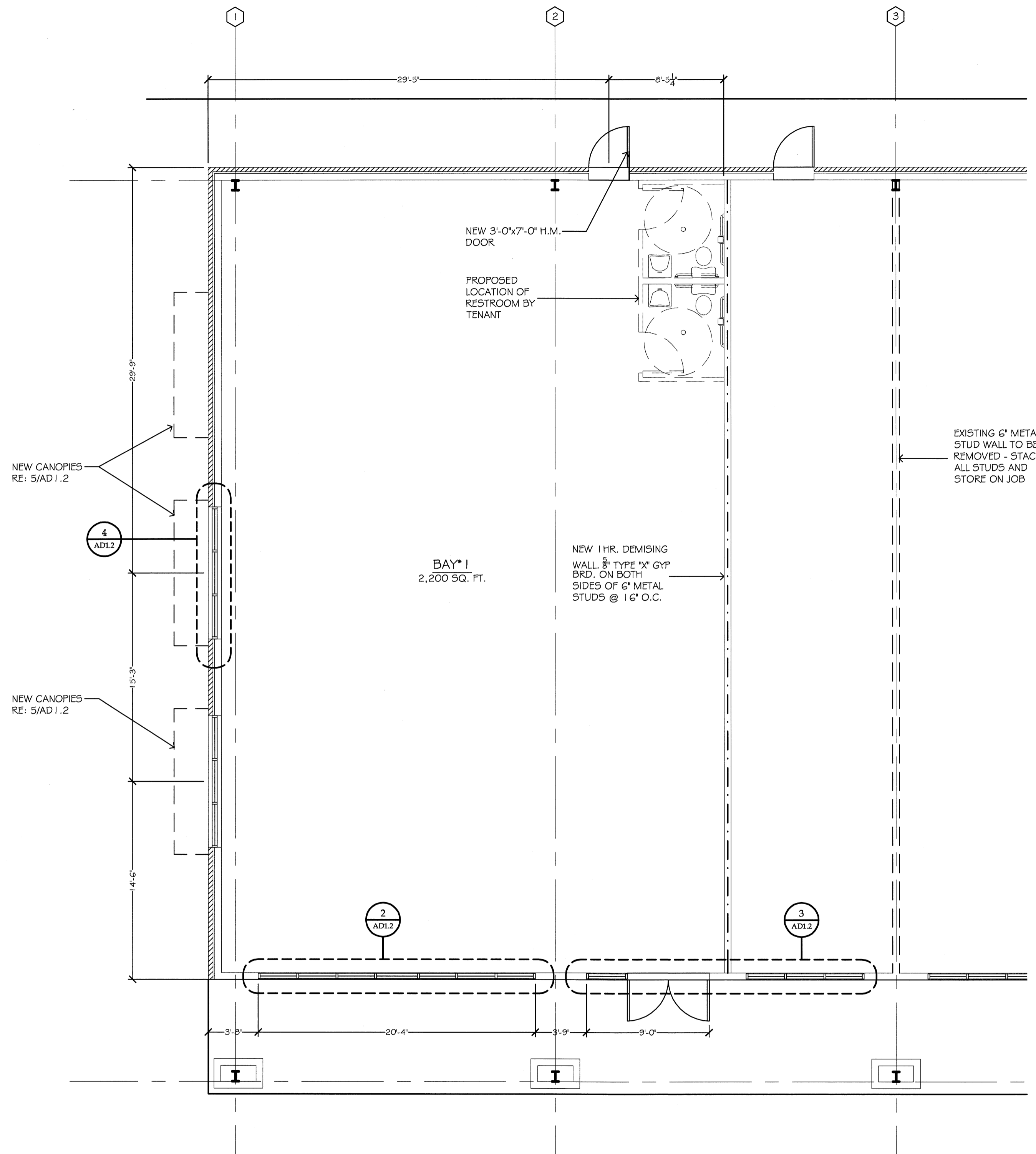
RENOVATIONS FOR
**GAUSE BOULEVARD
RETAIL CENTER**
SLIDELL • LOUISIANA

ADDENDUM #1
7/31/07

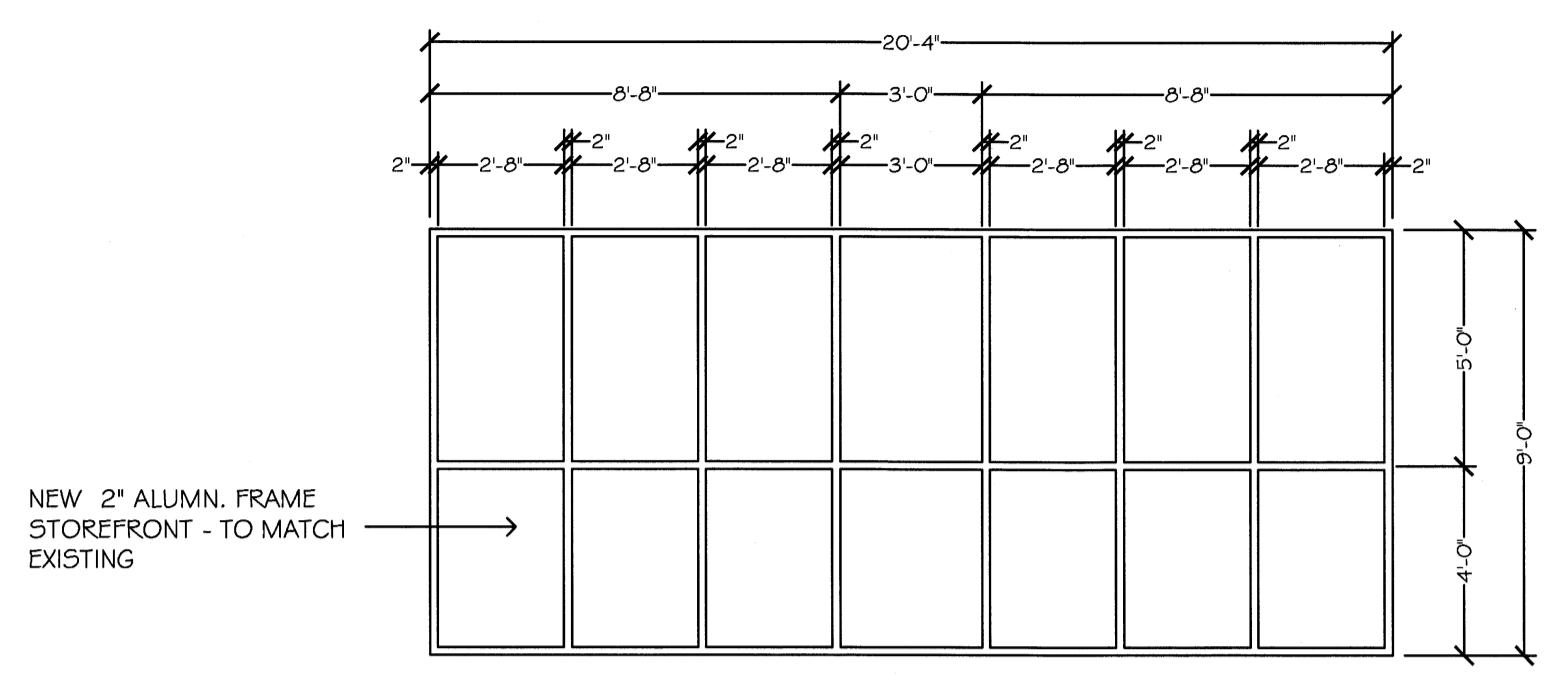
sheet

AD1.3

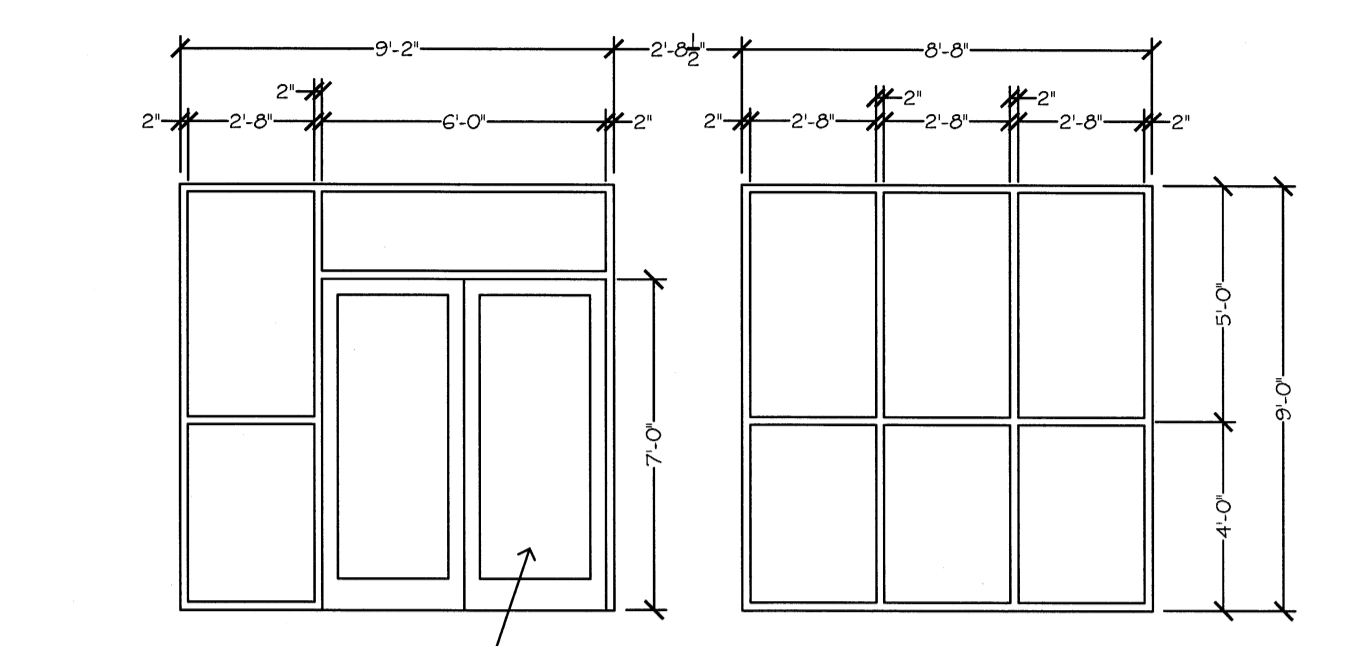
of 17



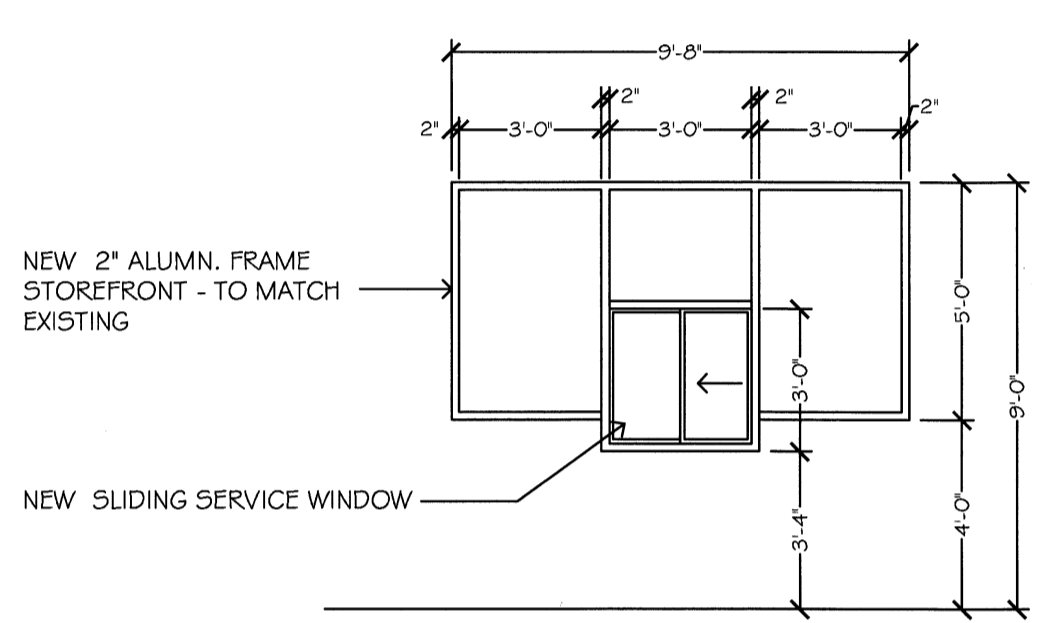
1. NEW FLOOR PLAN
SCALE: 3/16" = 1'-0"



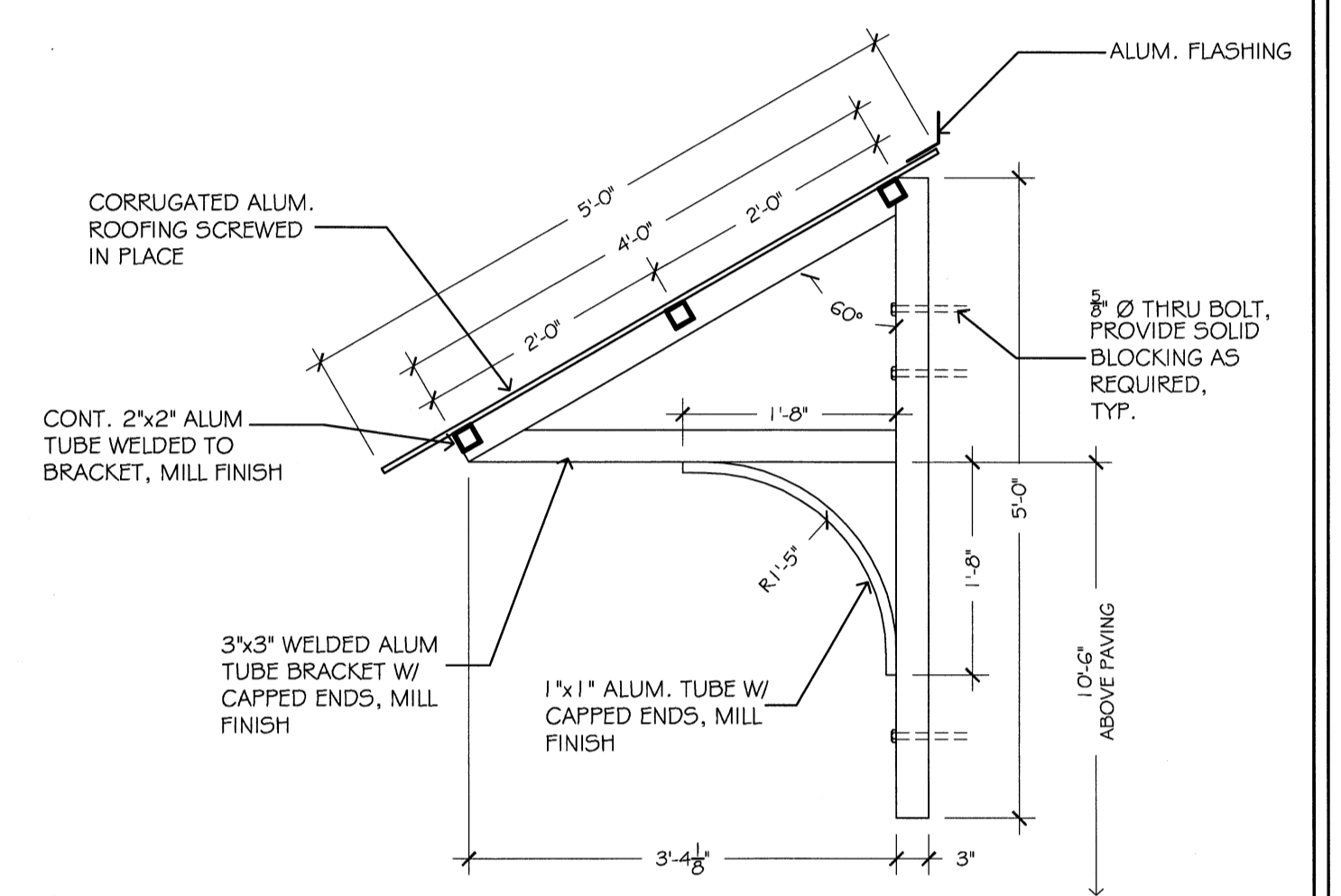
2. NEW STOREFRONT
SCALE: 1/4" = 1'-0"



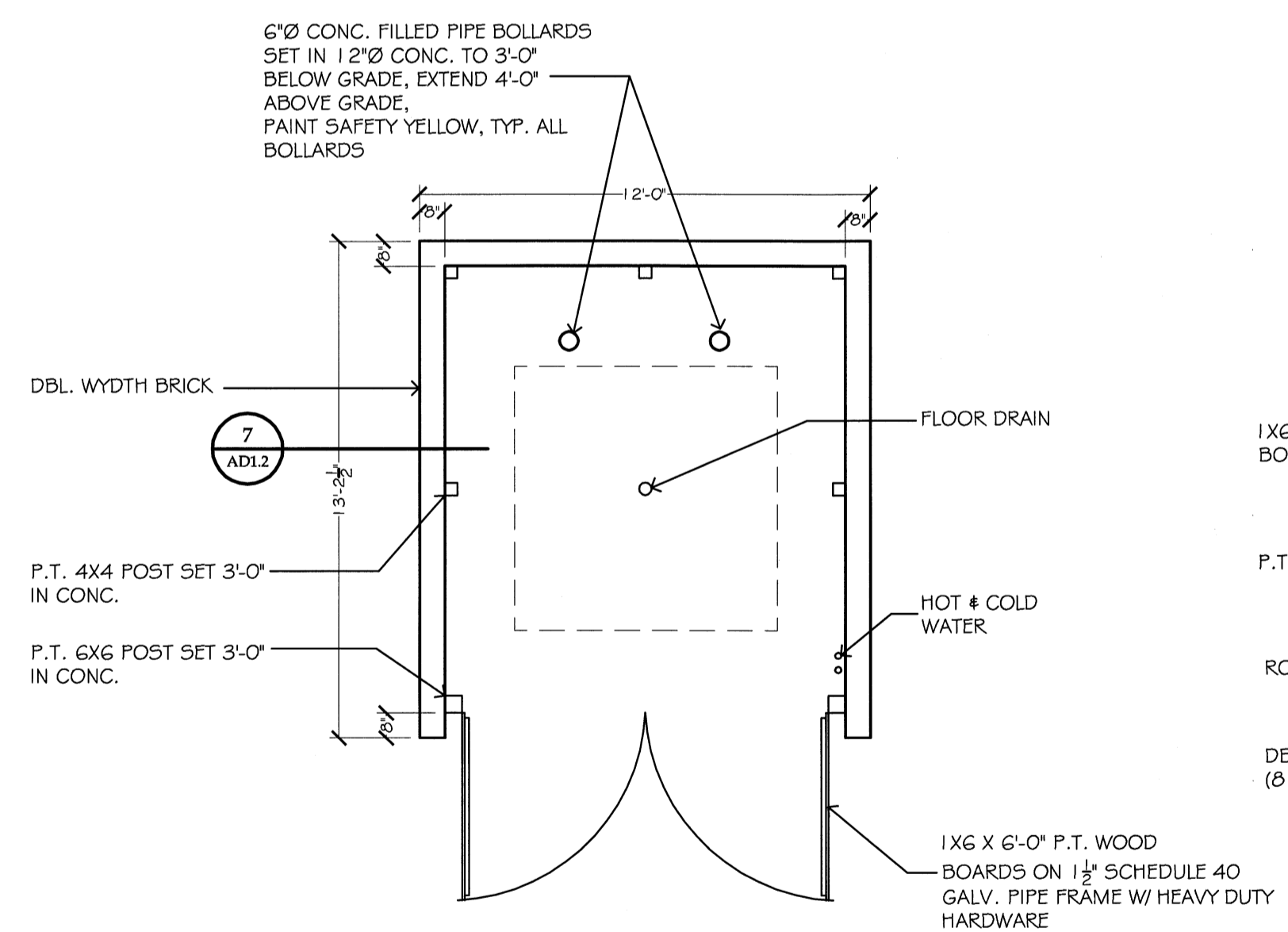
3. NEW STOREFRONT
SCALE: 1/4" = 1'-0"



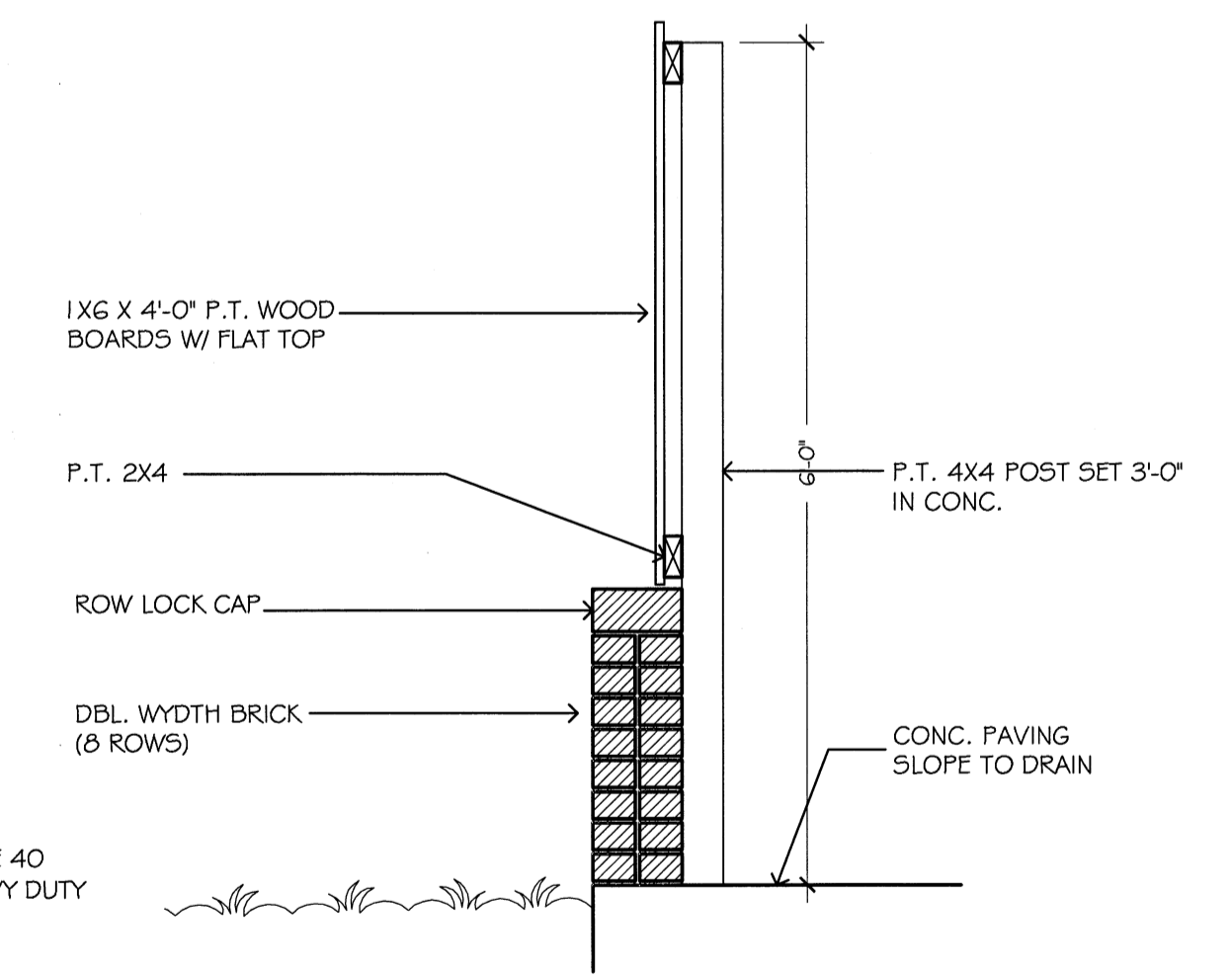
4. NEW STOREFRONT
SCALE: 1/4" = 1'-0"



5. CANOPY DETAIL
SCALE: 3/4" = 1'-0"

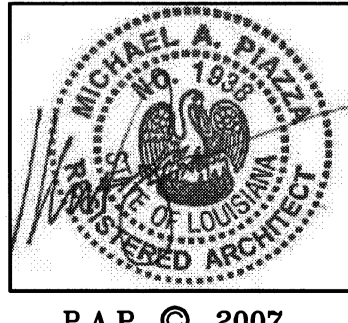


6. DUMPSTER AREA
SCALE: 1/4" = 1'-0"



7. SECTION
SCALE: 3/4" = 1'-0"

project 3507
date 7/5/07
revisions



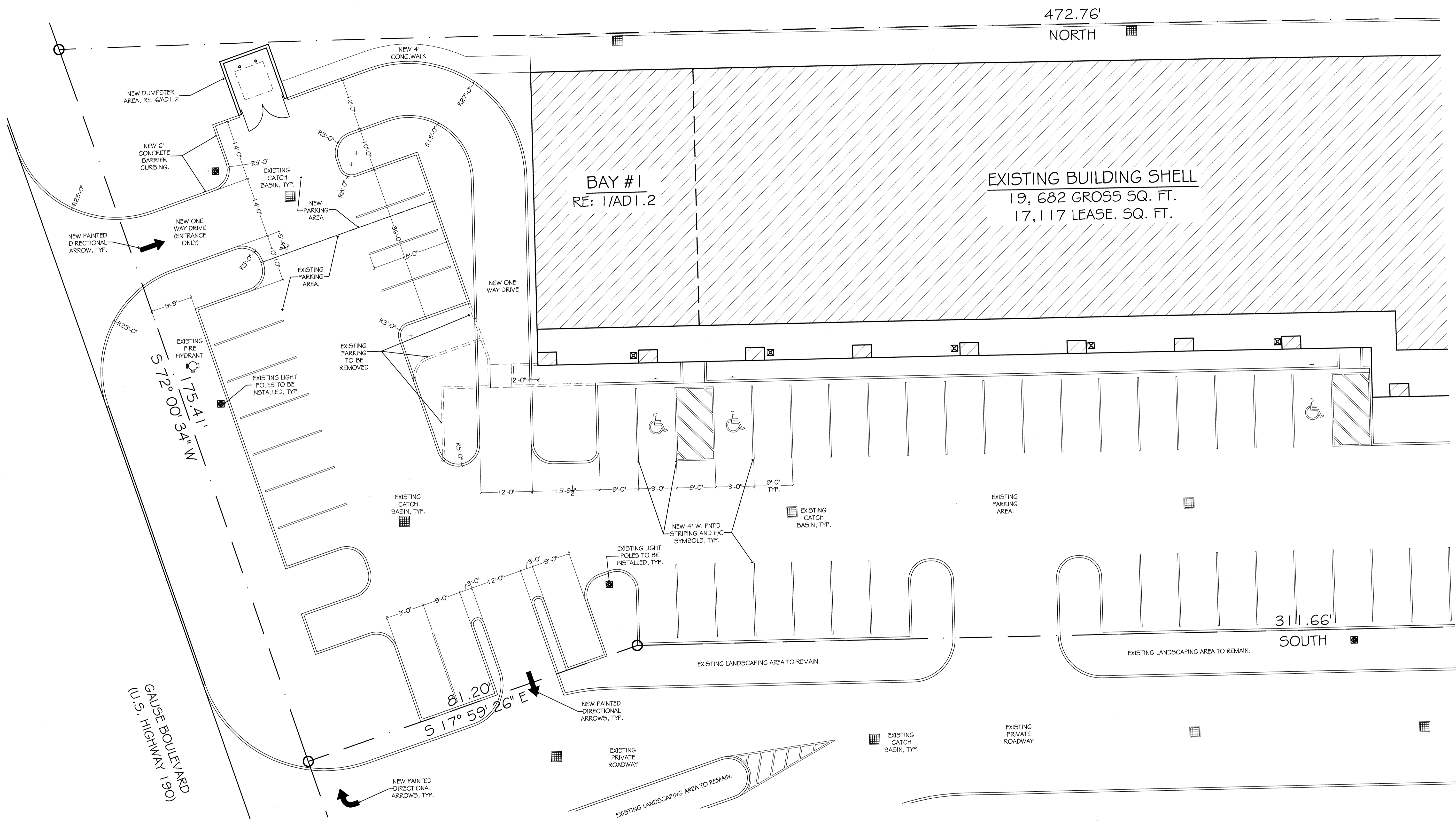
RENOVATIONS FOR
**GAUSE BOULEVARD
RETAIL CENTER**
SLIDELL • LOUISIANA

ADDENDUM #1
7/31/07

sheet
AD1.2

of 17

472.76'
NORTH



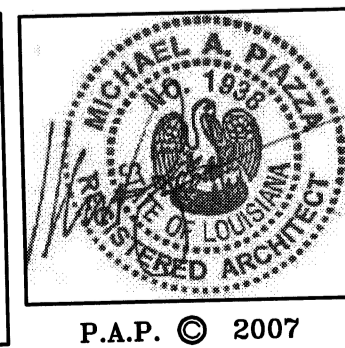
1. ENLARGED PROPOSED SITE PLAN - PHASE I

SCALE: 3/32" = 1'-0"
THIS DRAWING IS MADE FROM A SURVEY PROVIDED BY:
McMATH CONSTRUCTION COMPANY

APPENDUM #1
7/31/07

project 3507
date 7/5/07
revisions

Piazza Architecture • Planning
Mandeville Louisiana



P.A.P. © 2007

RENOVATIONS FOR
**GAUSE BOULEVARD
RETAIL CENTER**
SLIDELL • LOUISIANA

sheet
AD1.1
of 17