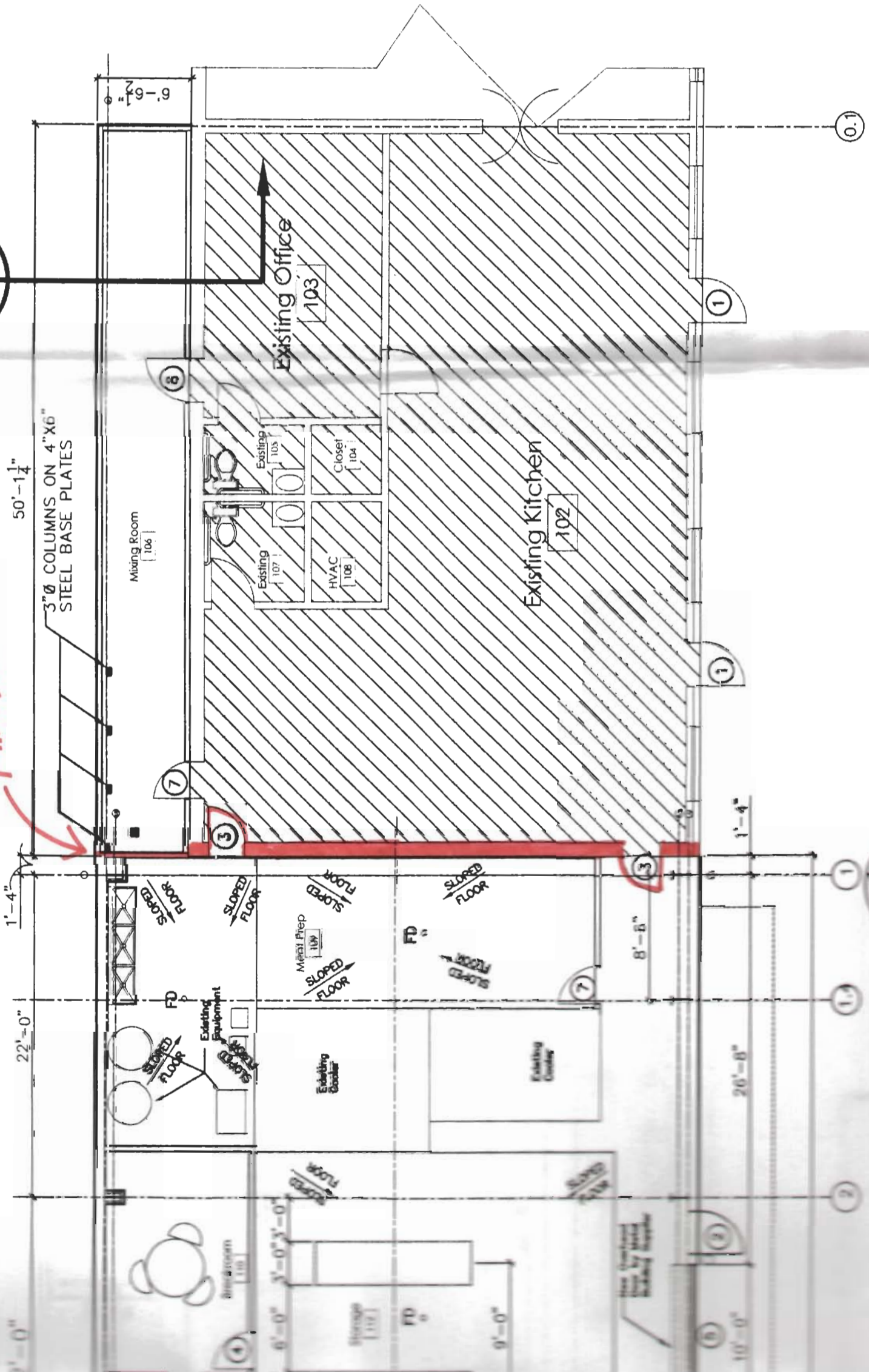


**NOTE: SEE A-2 FOR ALL FIRE BARRIERS.**

**1-HR RATED WALL**



### DOOR & HARDWARE

NO.	DOOR	TYPE				
		SOLID WOOD	HOLLOW METAL	ALUM/GLASS	STOREFRONT	SCREEN DOOR
1	3/0x7/0					
2	3/0x6/8					
3	3/0x6/8					
4	3/0x6/8					
5	12/0x8/0					
6	(2)3/0x7/0					
7	3/0x6/8					
8	3/0x6/8					

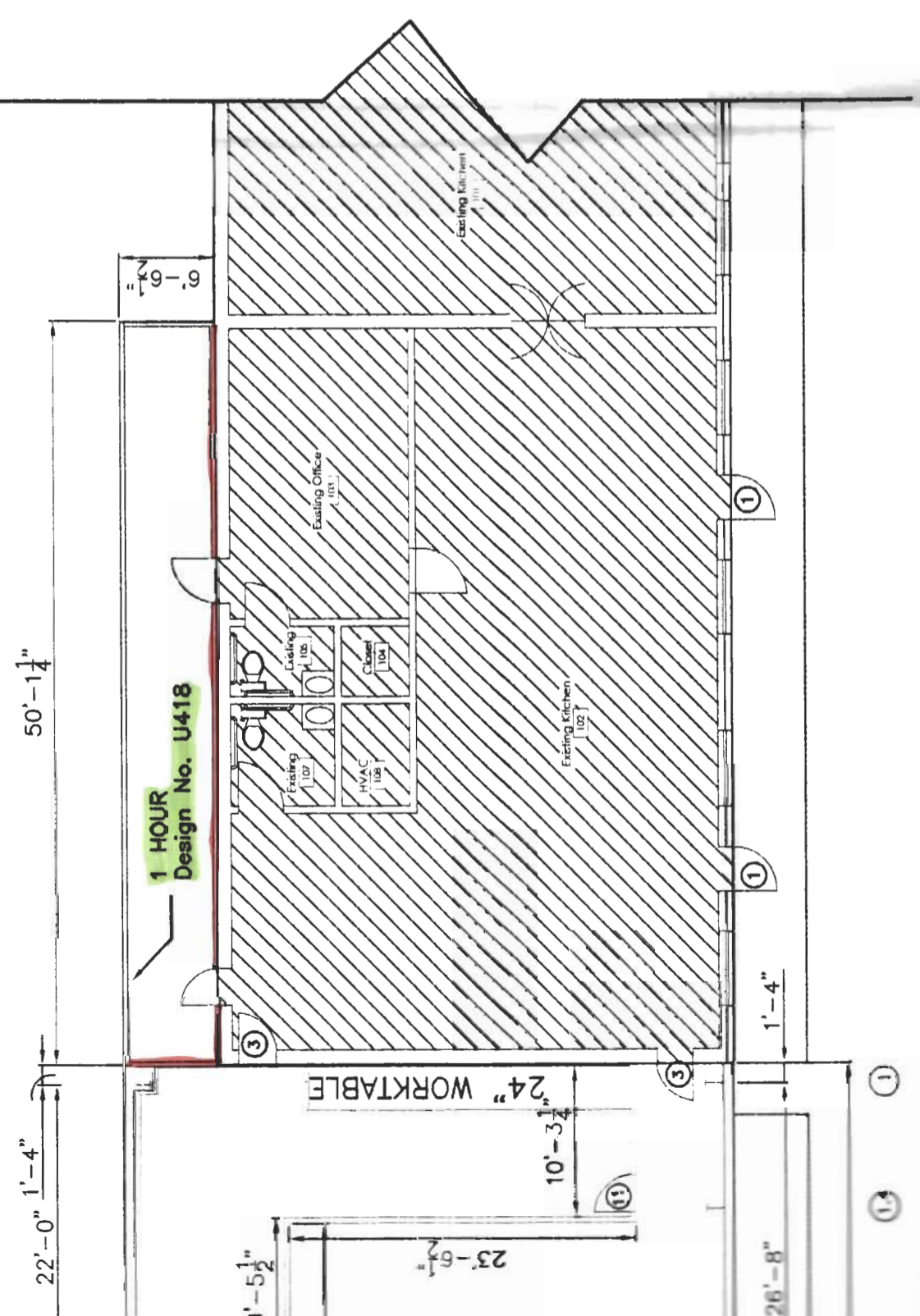
### FINISH

ROOM	FLOOR				
	BRICK PAVERS	VINYL TILE	CONCRETE	CERAMIC TILE	STAIRS
BATHROOM					
BREAK ROOM					
PACKAGING					
KITCHEN					
STORAGE					
GARAGE					
OFFICE					
ENCLOSED WALK					
COVERED WALK					

**FLOOR PLAN**  
SCALE: 1/8" = 1'-0"

CANOPY SUPPLIED BY MTL BLDG MFG DESIGN FOR 130 MPH WIND.

3x30x5" STEEL ANGLE  
SPANNING FROM 3x3  
IRON TO 3x3 ANGLE



1 HOUR  
Design No. U418

1 HOUR  
Design No. U906

APARTMENTS OVER BAKERY

2nd FLOOR PLAN  
SCALE: 3/32"=1'-0"

1st FLOOR PLAN  
SCALE: 3/32"=1'-0"

Design No. U418

December 10, 2003

(Exposed to Fire on Interior Face Only)  
Bearing Wall Rating 45 Min., 1 or 2 Hr.  
(See Item 4)

