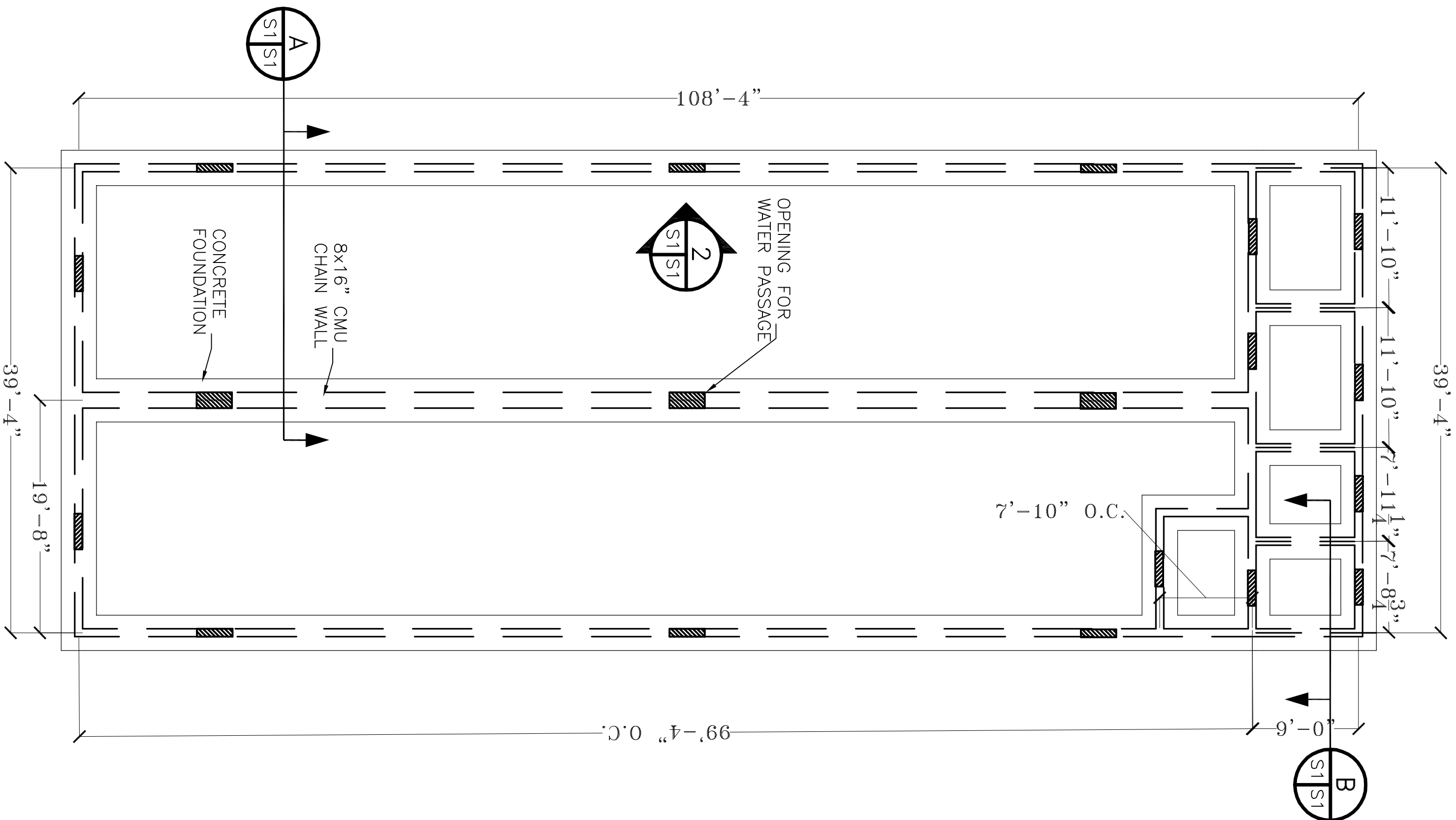


FOUNDATION GENERAL NOTES:

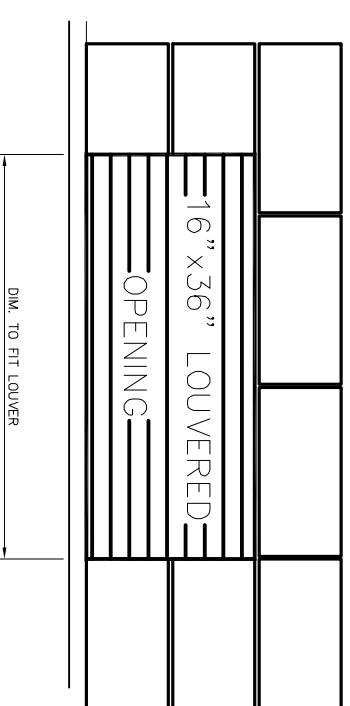
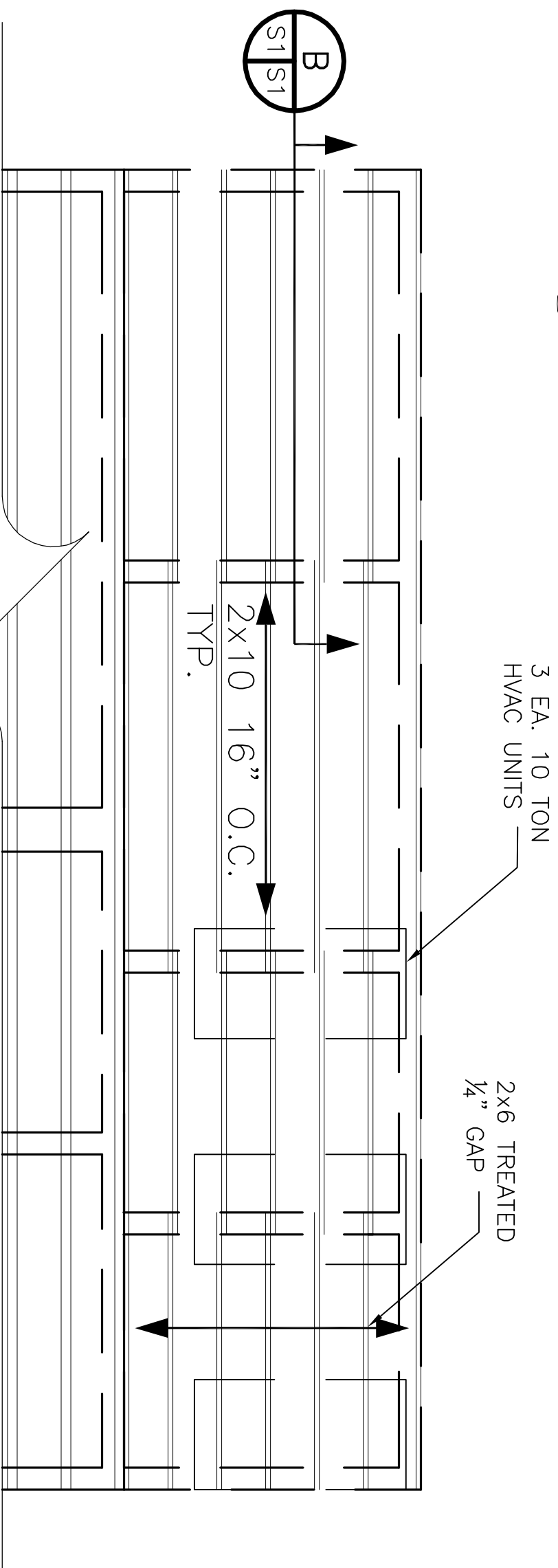
1. FILL UNDER SLAB SHALL CONSIST OF 40% AND 60% SANDY MIXTURE AFTER SLAB AREA HAS BEEN EXCAVATED TO REMOVE ALL DEBRIS.
2. COMPACT FILL TO 95% DENSITY.
3. BEAM DIMENSIONS SHOWN ARE MINIMUM REQUIRED AND MAY NOT BE REDUCED, BUT DEPTH MAY BE EXTENDED TO SEAT BOTTOM OF BEAMS IN UNDISTURBED SOIL.
4. TENDONS AND REBAR SHALL BE SECURELY SUPPORTED TO PREVENT BOTH VERTICAL AND HORIZONTAL MOVEMENT DURING PLACEMENT OF CONCRETE.
5. CONCRETE DESIGN IS BASED UPON A CONCRETE MIX HAVING A MINIMUM OF 5 SACKS OF CEMENT PER CUBIC YARD AND A MAXIMUM OF 30 GALLONS OF FREE AND ADDED WATER PER CUBIC YARD. SUCH A MIX SHOULD GIVE A MINIMUM COMPRESSION STRENGTH OF 3,000 P.S.I. AT 28 DAYS. CONCRETE DESIGN MIX SHALL BE IN ACCORDANCE WITH THE A.C.I. BUILDING CODE REQUIREMENTS (A.C.I. 318R-89).
6. ALL CONVENTIONAL REINFORCING STEEL SHALL BE ASTM DESIGNATION A-615 (GRADE 60) REINFORCING AND SHALL BE DETAILED AND ACCESSORIES PROVIDED IN ACCORDANCE WITH THE LATEST A.C.I. MANUAL OF STANDARD PRACTICE FOR DETAILING REINFORCED CONCRETE STRUCTURES.
7. THE CONTRACTOR SHALL VERIFY ALL DROPS, SLOPES, RECESSES, BRICK SEATS, BLOCK-OUTS ON ARCHITECTURAL PLANS AND NOTIFY THE ENGINEER OF ANY DISCREPANCIES THAT MAY EXIST.
8. COORDINATE STRUCTURAL DRAWINGS WITH ARCHITECTURAL AND MECHANICAL DRAWINGS FOR ALL OPENINGS, INSERTS, AND ANY OTHER RELATED ITEMS.
9. PLANS FOR PIPES, CONDUITS, THIMBLES, ETC., TO PASS THROUGH CONCRETE SLAB OR BEAM, MUST NOT CONFLICT WITH REINFORCING. WHERE A CONFLICT OCCURS PIPES, CONDUITS, ETC. LOCATION IS TO TAKE PRECEDENCE.
10. PROVIDE SINGLE LAYER OF VAPOR BARRIER UNDER ALL CONCRETE SLAB.
11. FORMS TO BE STRIPPED NO LATER THAN 6 DAYS AFTER PLACEMENT OF CONCRETE.



FOUNDATION PLAN
SCALE: 1/8"=1'-0"

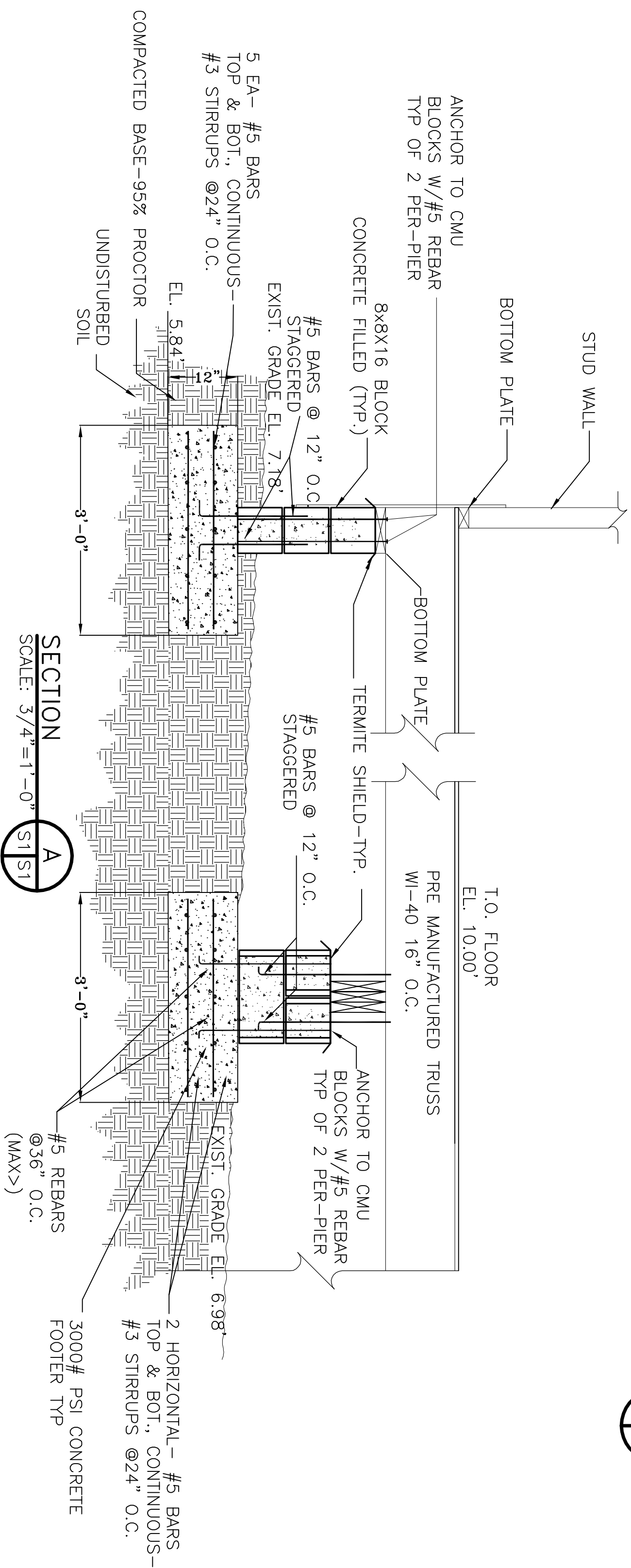
LOADING DOCK DETAIL

SCALE: 1/4"=1'-0"



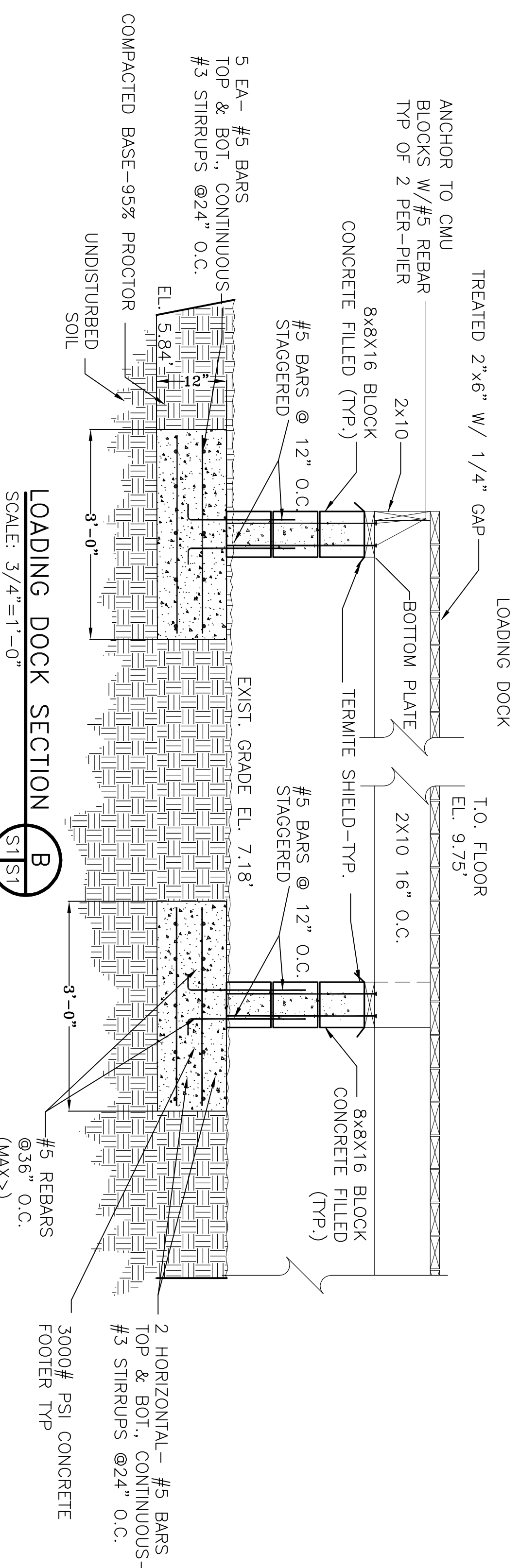
LOUVERED OPENING DETAIL

SCALE: N.T.S.



SECTION

SCALE: 3/4"=1'-0"



LOADING DOCK SECTION

SCALE: 3/4"=1'-0"

FOUNDATION PLAN

MT. OLIVE FEEDING MINISTRY
SECOND STREET
SLIDELL, LA

MOUNT OLIVE FEEDING MINISTRY

DAMMON ENGINEERING. INC.
1095 FLORIDA AVENUE 985-649-5832 SLIDELL, LA. 70458
DAMMONENGINEERING.COM

SCALE: AS NOTED

FILE:

JOB NO. 1684

DATE: 9-11-06

SHEET 7

S-1

OF 15