

DAMMON
ENGINEERING, INC.
EMMETT
DAMMON

ARCHITECT
ROBERT
SOLLBERGER
1095 FLORIDA AVENUE
SLIDELL, LA. 70458
985-649-5832

WEBSITE:
WWW.DAMMONENGINEERING.COM
EMAIL:
DAMMONENG@BELLSOUTH.NET

ARCHITECTURE
ENGINEERING
STUDIES
PLANNING
INVESTIGATION
EXPERT WITNESS

**LA ROSETTA
RESTAURANT**

LA ROSETTA
ROBERT ROAD
SLIDELL, LA

**SITE
PLAN**

REV:

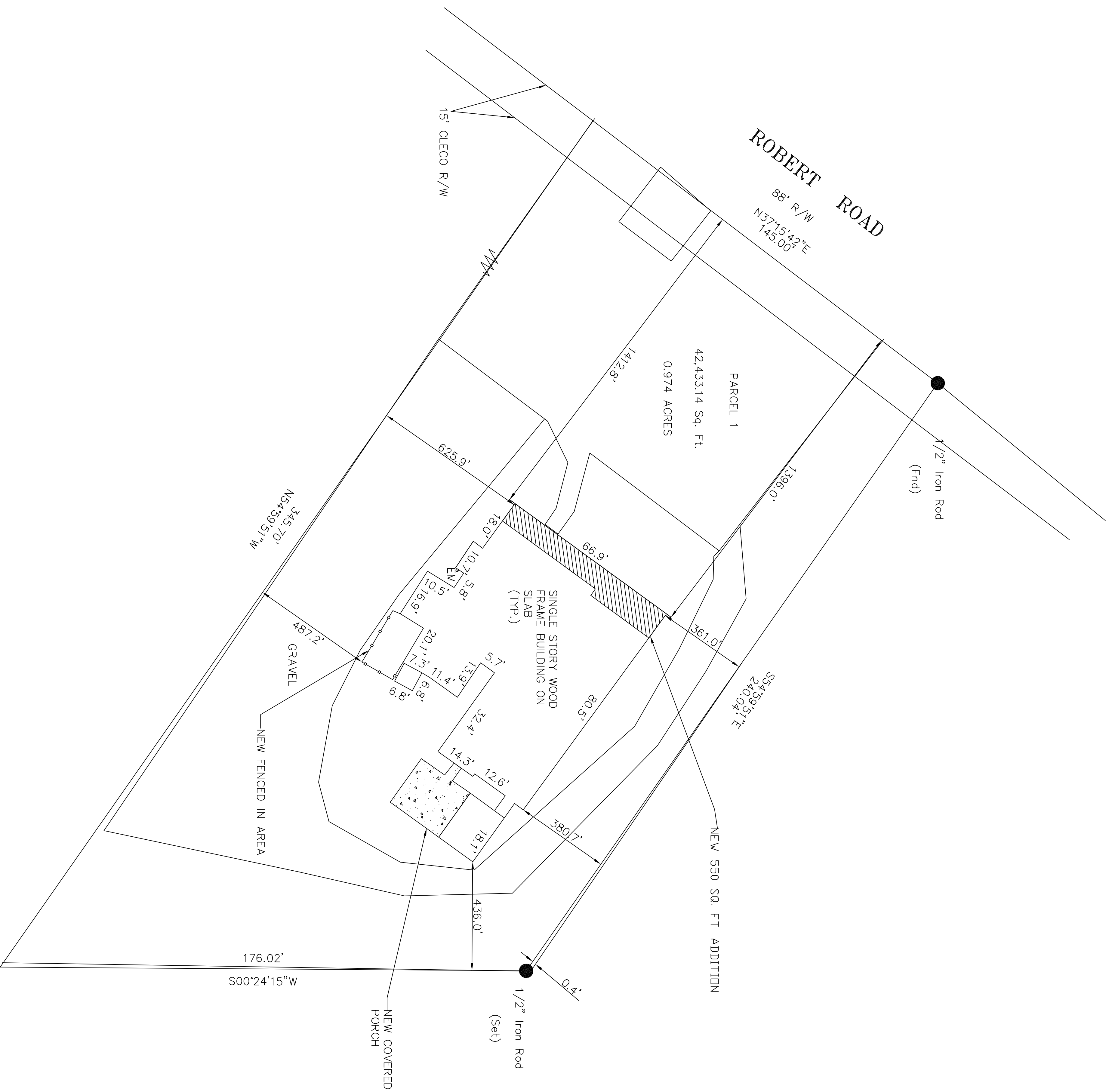
SCALE: 1" = 20'

JOB#: 1885

DATE: 8-10-07

SHEET 2

C-1



SITE PLAN

SCALE: 1" = 20'-0"