

DAMMON
ENGINEERING, INC

CHIEF ENGINEER
EMMETT
DAMMON, P.E.

CHIEF ARCHITECT
ROBERT
WILTSE

1095 FLORIDA AVENUE
SLIDELL, LA, 70458
OFFICE: 985-649-5932
FAX: 985-641-5950

WEBSITE:
WWW.DAMMONENGINEERING.COM

EMAIL:
DAMMONENG@BELLSOUTH.NET

ARCHITECTURE

ENGINEERING

STUDIES

PLANNING

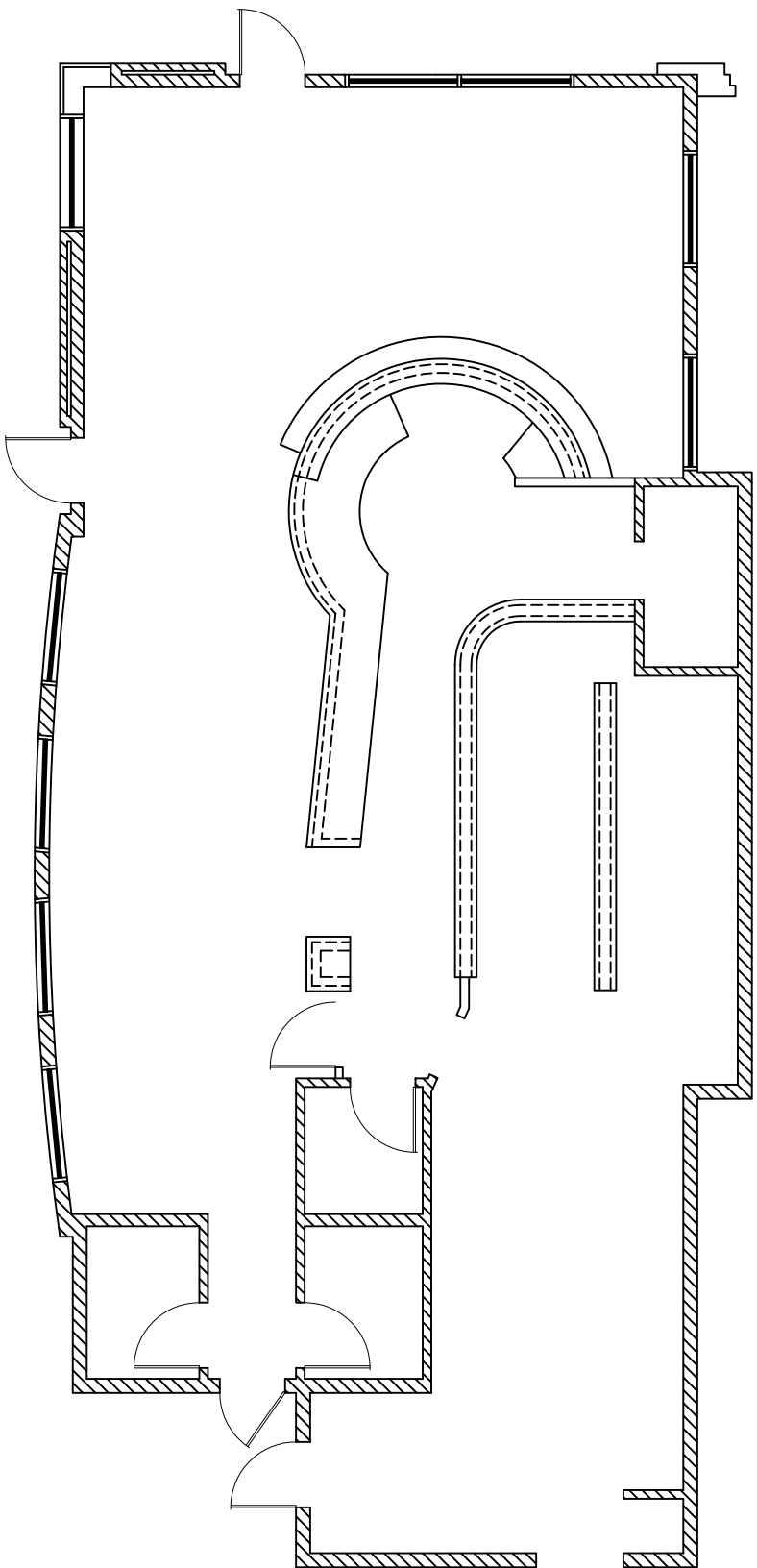
INVESTIGATION

EXPERT WITNESS

RESTAURANT
RENOVATION

OSAKA
S. MORRISON BLVD
HAMMOND, LA

DEMO
FLOOR PLAN



DEMO FLOOR PLAN
SCALE 1/4"=1'-0"



REV:

SCALE: AS NOTED

JOB#:

DATE: 3-18-08

SHEET

A-1

OF