

DAMMON
ENGINEERING, INC

CHIEF ENGINEER
EMMETT
DAMMON, P.E.

CHIEF ARCHITECT
ROBERT
WILTSE

1095 FLORIDA AVENUE
SLIDELL, LA, 70458
OFFICE: 985-649-5932
FAX: 985-641-5950

WEBSITE:
WWW.DAMMONENGINEERING.COM
EMAIL:
DAMMONENG@BELLSOUTH.NET

ARCHITECTURE
ENGINEERING
STUDIES
PLANNING
INVESTIGATION
EXPERT WITNESS

RESTAURANT
RENOVATION

OSAKA
S. MORRISON BLVD
HAMMOND, LA

PROPOSED
SITE PLAN

REV:

SCALE: AS NOTED

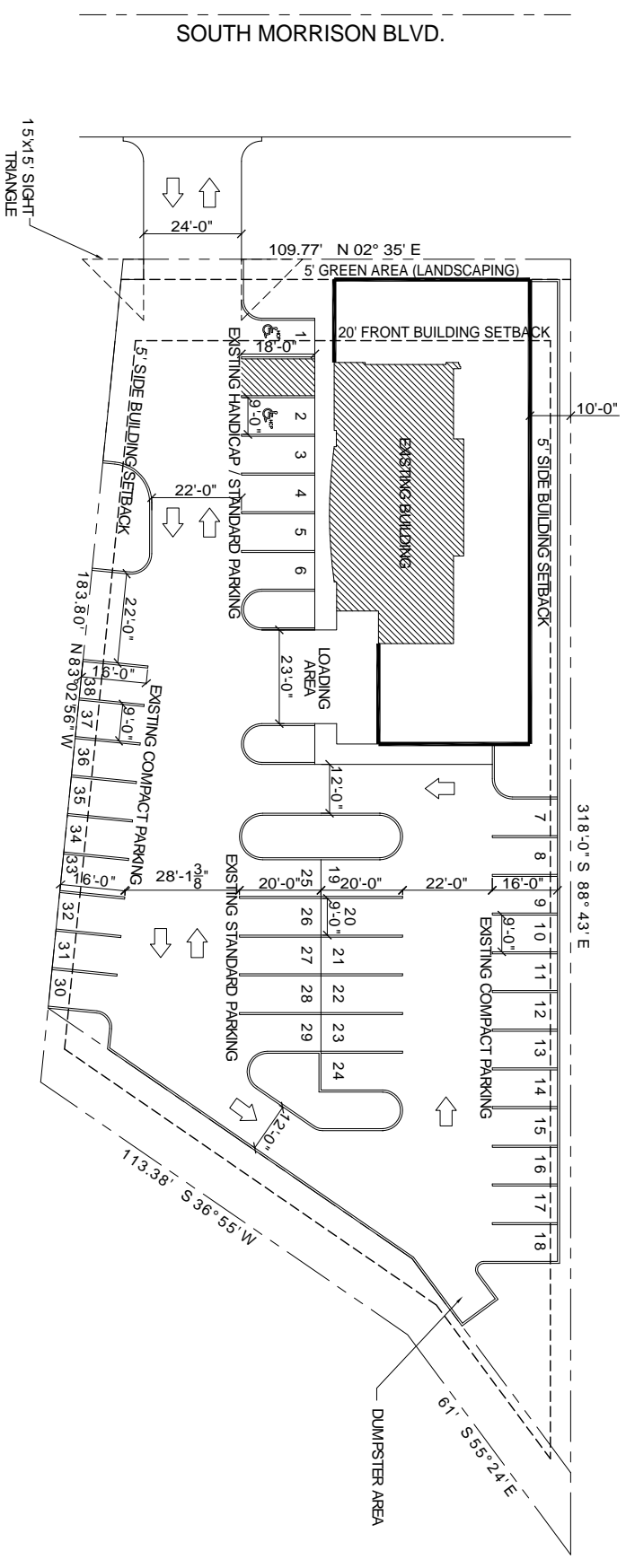
JOB#: 1943

DATE: 3-19-08

SHEET

C-1

OF



SITE PLAN
SCALE 1" = 20'-0"

PARKING REQUIREMENTS

BUILDING TOTAL = 5,138 s.f.
ONE SPACE PER 75 s.f. OF CUSTOMER SERVICE AREA (NOT INCLUDING KITCHEN OR STORAGE) = 2,840 s.f. / 75 s.f. = 38 SPACES (INCLUDING 2 HANDICAP SPACES) REQUIRED
38 SPACES (INCLUDING 2 HANDICAP SPACES) PROVIDED

NOTE
THIS SITE PLAN WAS CONSTRUCTED FROM A PAPER COPY OF THE SURVEY.

