

DAMMON
ENGINEERING, INC

CHIEF ENGINEER
EMMETT
DAMMON, P.E.

CHIEF ARCHITECT
ROBERT
WILTSE

1095 FLORIDA AVENUE
SLIDELL, LA. 70458
OFFICE: 985-649-5832
FAX: 985-641-5950

WEBSITE:
WWW.DAMMONENGINEERING.COM
EMAIL:
DAMMONENG@BELL.SOUTH.NET

ARCHITECTURE
ENGINEERING
STUDIES
PLANNING
INVESTIGATION
EXPERT WITNESS

RESTAURANT
RENOVATION

OSAKA
S. MORRISON BLVD
HAMMOND, LA

PROPOSED
SITE PLAN

REV:

SCALE: AS NOTED

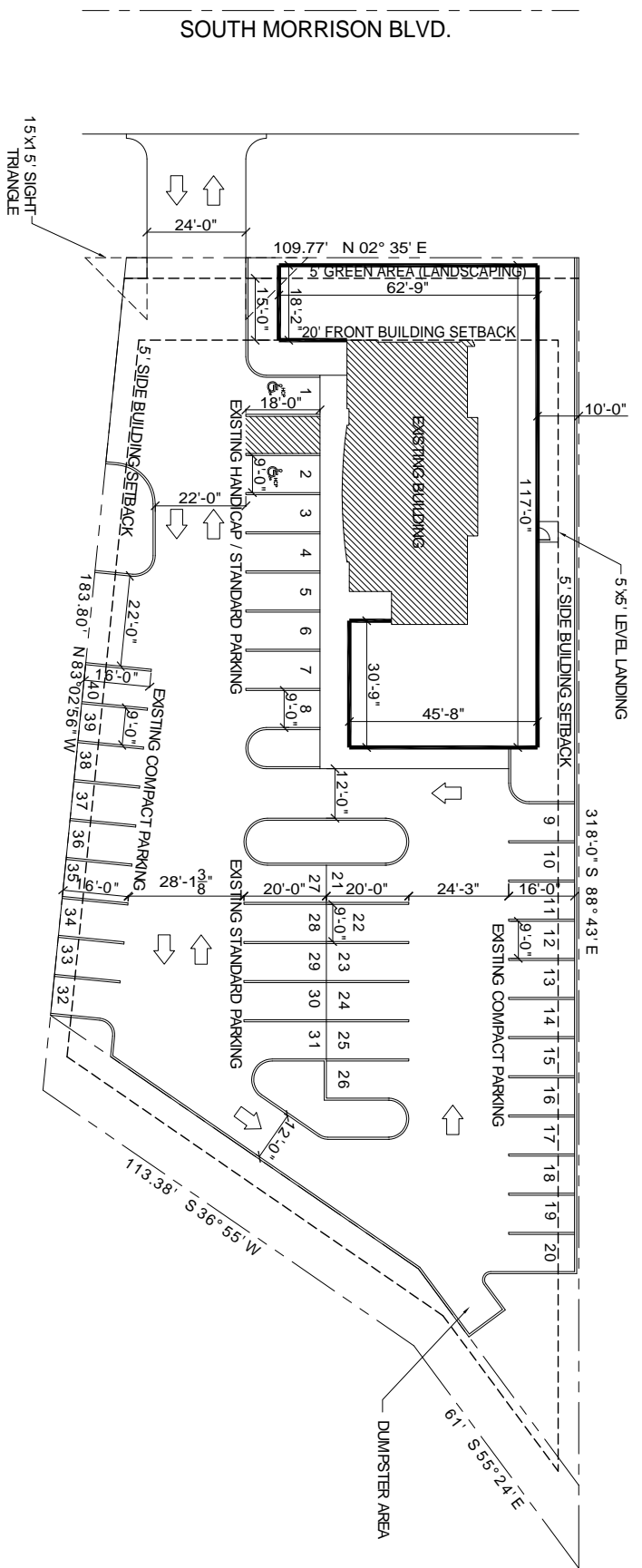
JOB#: 1943

DATE: 3-19-08

SHEET

C-1

OF



SITE PLAN
SCALE: 1"=20'-0"

PARKING REQUIREMENTS

BUILDING TOTAL = 5,138 s.f.
ONE SPACE PER 75 s.f. OF CUSTOMER SERVICE AREA (NOT INCLUDING KITCHEN OR STORAGE) = 3,207 s.f. / 75 s.f. = 43 SPACES (INCLUDING 2 HANDICAP SPACES) REQUIRED
4.0 SPACES (INCLUDING 2 HANDICAP SPACES) PROVIDED
(NEED VARIANCE FOR THREE SPACES)

NOTE

THIS SITE PLAN WAS CONSTRUCTED FROM A PAPER COPY OF THE SURVEY.

