



DAMMON ENGINEERING, INC.

CHIEF ENGINEER
EMMETT DAMMON, P.E.
CHIEF ARCHITECT
ROBERT WILTSE

1095 FLORIDA AVENUE
SUDELL, LA. 70456
OFFICE: 985-649-5632
FAX: 985-641-5950

WEBSITE:
WWW.DAMMONENGINEERING.COM
EMAIL:
DAMMONJ@BELLSOUTH.NET

ARCHITECTURE
ENGINEERING
STUDIES
PLANNING
INVESTIGATION
EXPERT WITNESS

NEW RESTAURANT

CHRISTIANO'S RISTORANTE
OAK HARBOR BLVD
LOT 29
SUDELL, LA 70458

SITE PLAN

REV: 7-28-08

SCALE: AS NOTED

JOB#: 1955

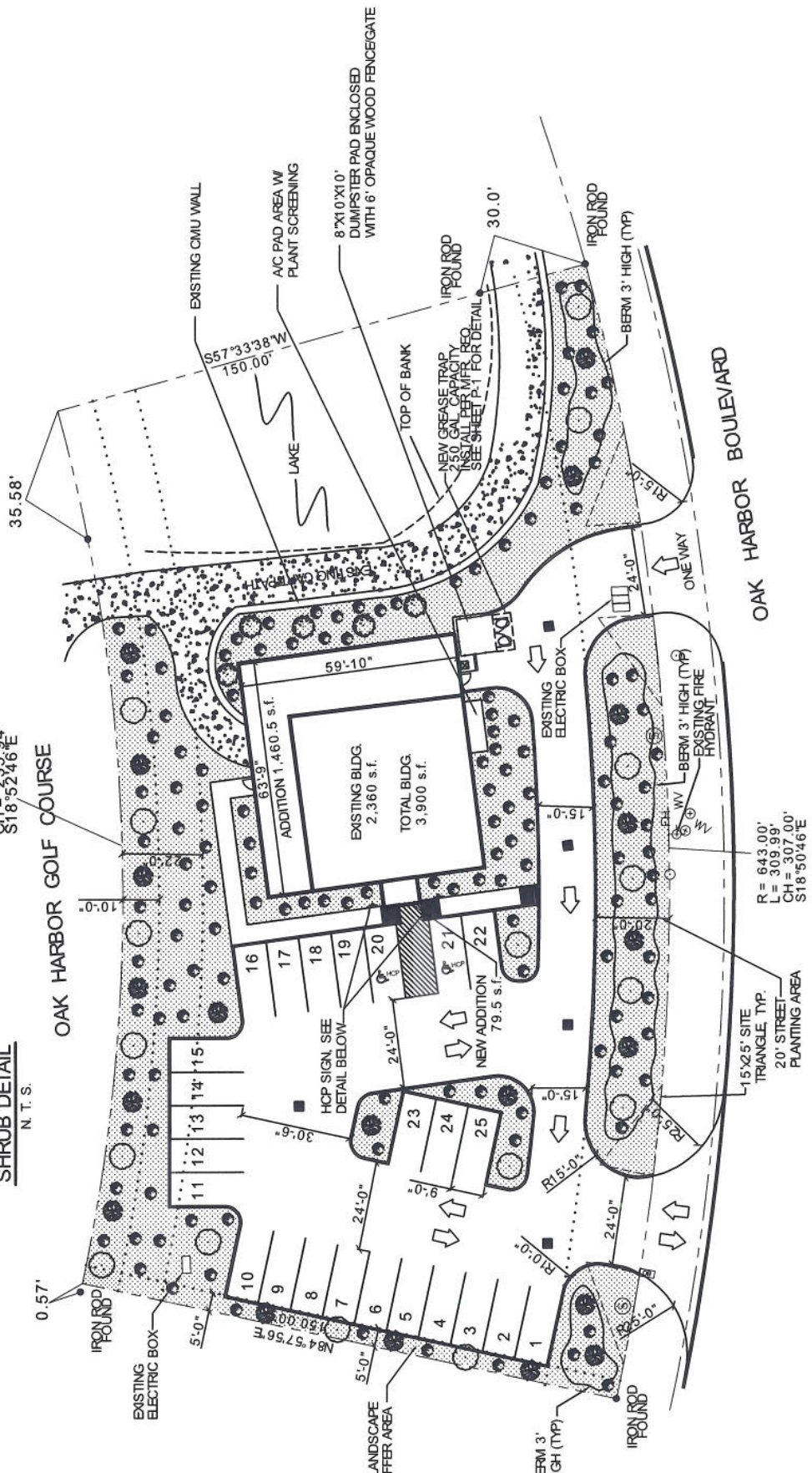
DATE: 5-16-08

SHEET 1

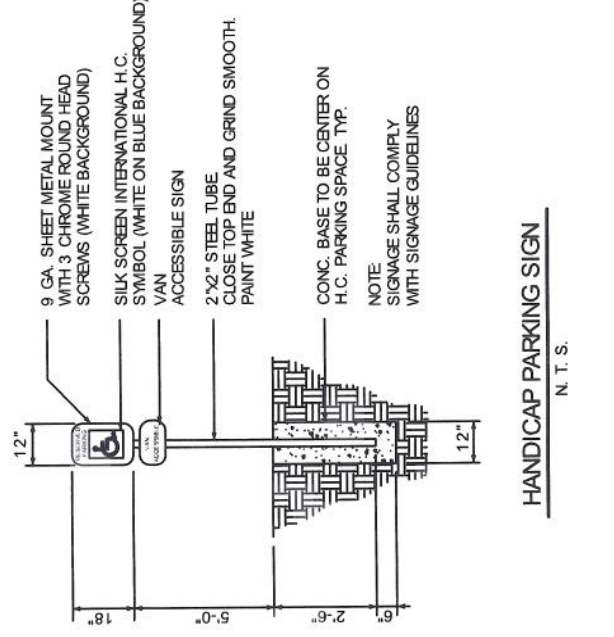
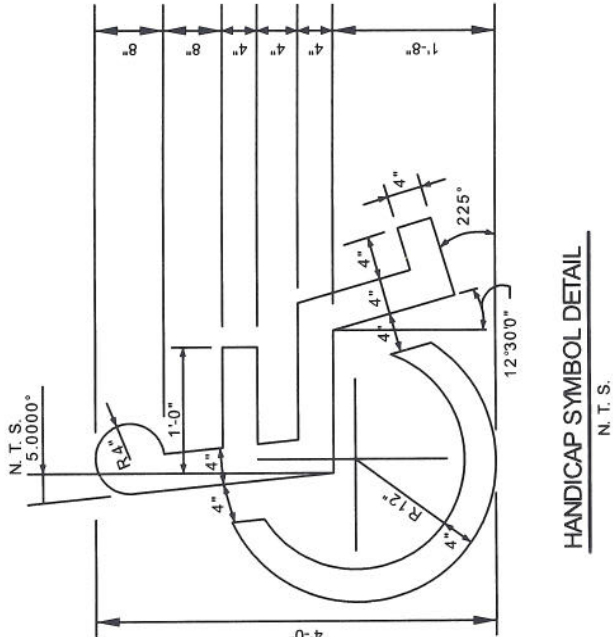
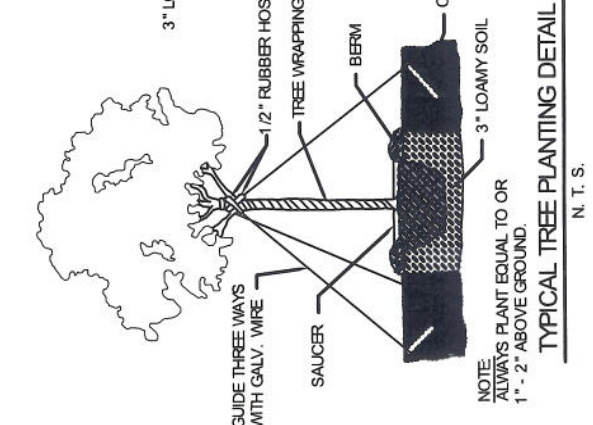
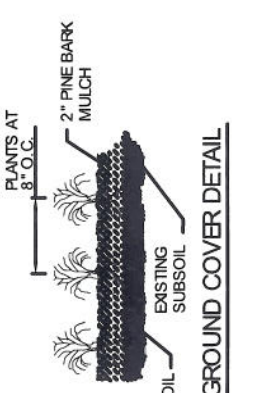
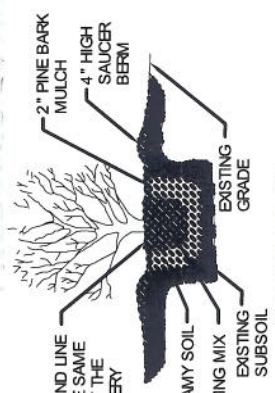
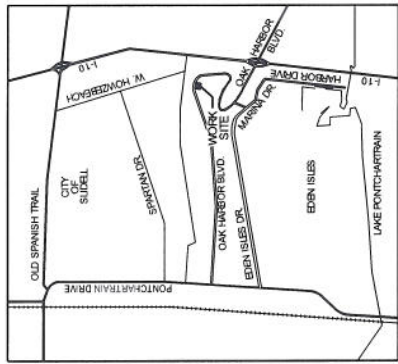
C-1

OF 11

- LEGEND**
- - - - - PROPERTY LINE
 - SETBACK
 - NEW BUILDING OUTLINE
 - HANDICAP PARKING
 - HANDICAP PARKING SIGN
 - TRAFFIC FLOW DIRECTION
 - NEW CATCH BASIN
- HCP
- NEW GREASE TRAP
250 GAL CAPACITY
INSTALL PER MFR REQ
SEE SHEET P.1 FOR DETAIL



SITE PLAN
SCALE 1" = 20'-0"



PARKING REQUIREMENTS

3,900 s.f. TOTAL RESTAURANT AREA
TOTAL PARKING REQUIRED = 24 SPACES (1 HANDICAP)
TOTAL PARKING PROVIDED = 25 SPACES (2 HANDICAP)

OAK HARBOR P.U.D. LANDSCAPING REQUIREMENTS

- LIVE OAK MIN. 4" CALIPER (MEASURED 8" ABOVE ROOT BALL), MIN. HEIGHT 12', AND MIN. 5' CANOPY. (1) PER 100' STREET FRONTAGE
- CLASS "A" TREE SHALL: MIN. 2-1/2" CALIPER (MEASURED 6" ABOVE ROOT BALL), MIN. HEIGHT 12', TREE SPECIES SHALL BE APPROVED BY P.U.D. OAK HARBOR ARCH. REVIEW COMMITTEE
- CLASS "B" TREE SHALL: MIN. 2-1/2" CALIPER (MEASURED 6" ABOVE ROOT BALL), MIN. HEIGHT 8'-10', TREE SPECIES SHALL BE APPROVED BY P.U.D. OAK HARBOR ARCH. REVIEW COMMITTEE
- SHRUBS 10' O.C. (UNLESS SHOWN OTHERWISE) SHALL HAVE A MIN. HEIGHT OF 2' AT TIME OF PLANTING

LANDSCAPING NOTES:
1. PROVIDE A 20' LANDSCAPE BUFFER AREA WITH MIN. 20% GROUND COVER ADJACENT TO OAK HARBOR BLVD.
2. PROVIDE 5' SIDE PERIMETER LANDSCAPE BUFFER AREAS.

LEGAL DESCRIPTION
LOT 29, OAK HARBOR COMMERCIAL
PHASE 3, ZONED C-2
ST. TAMMANY PARISH, LA

AREA BY USE
TOTAL RESTAURANT = 3,900 s.f.

SITE LIGHTING
EXTERIOR LIGHTING SHALL BE SHADED OR INWARDLY DIRECTED IN SUCH A MANNER SO THAT NO DIRECT LIGHTING OR GLARE BE CAST BEYOND THE PROPERTY LINE. THE INTENSITY OF SUCH LIGHTING SHALL NOT EXCEED ONE FOOT CANDLE AS MEASURED AT THE ADJUTTING PROPERTY LINE. (N/A)