

DAMMON ENGINEERING, INC.

CHIEF ENGINEER
EMMETT DAMMON, P.E.
CHIEF ARCHITECT
ROBERT WILTSE

1095 FLORIDA AVENUE
SLIDELL, LA, 70456
OFFICE: 985-649-5832
FAX: 985-641-5950

WEBSITE:
WWW.DAMMONENGINEERING.COM
EMAIL:
DAMMONENG@BELLSouth.NET

ARCHITECTURE
ENGINEERING
STUDIES
PLANNING
INVESTIGATION
EXPERT WITNESS

RESTAURANT RENOVATION

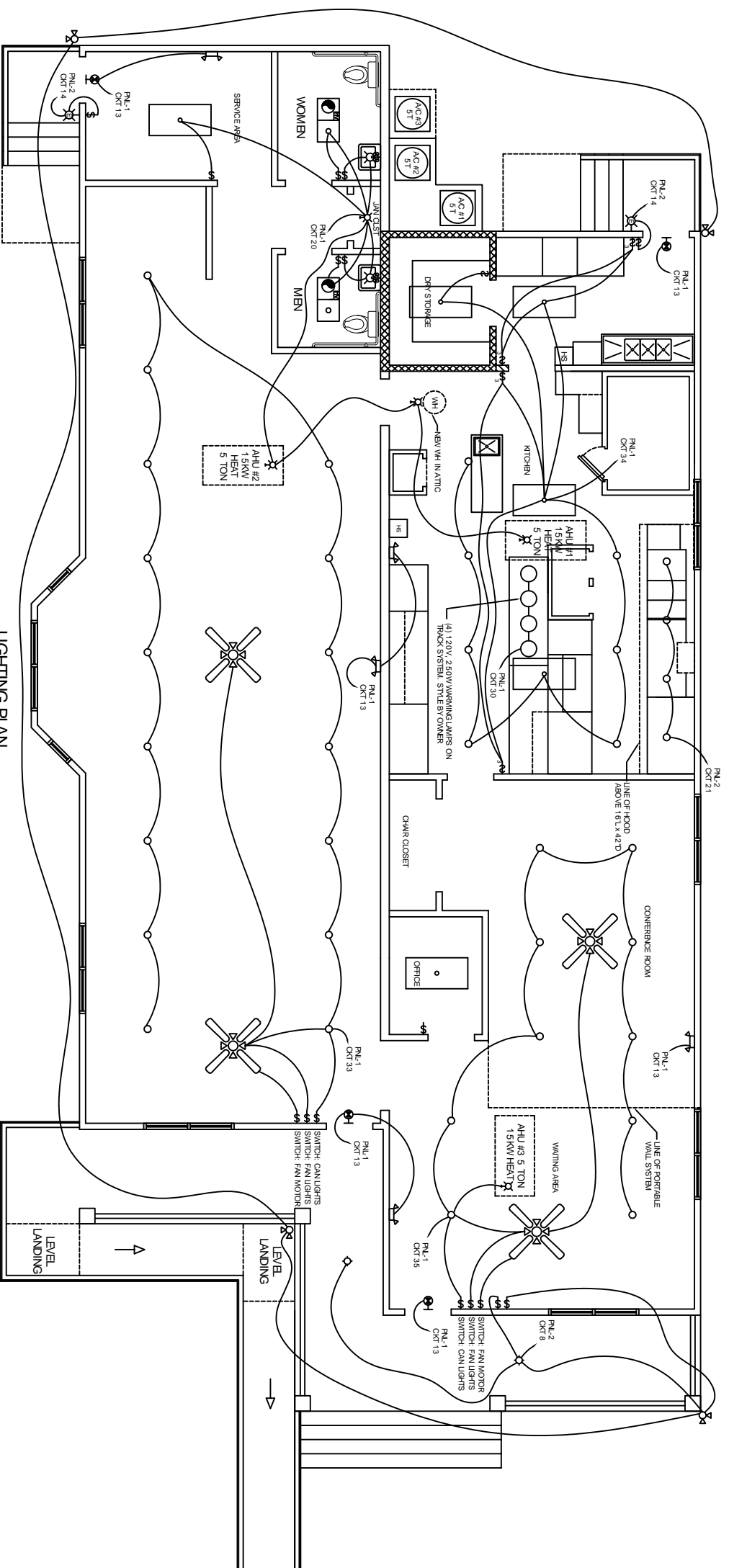
ROB HOWELL
SUNRISE ON 2nd ST.
1929 2nd ST.
SLIDELL, LA
70458

LIGHTING PLAN

REV:	
SCALE:	AS NOTED
JOB#:	1983
DATE:	8-3-08
SHEET:	7

OF 9

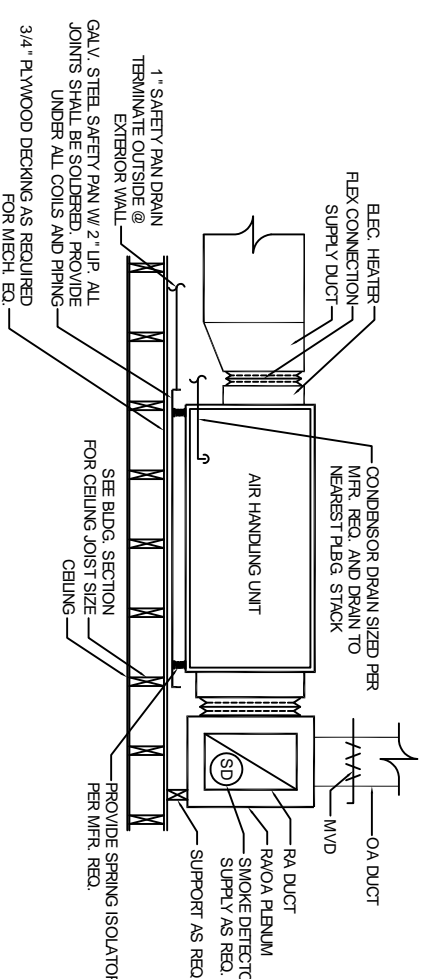
E-2



LIGHTING PLAN
SCALE 1/4" = 1'-0"

WALK-IN COOLER NOTES:

COOLER TO BE KOLPAK OR EQUAL, NOMINAL DIMENSIONS AS SHOWN ON PLANS. STANDARD HEIGHT. PROVIDE COMPLETE OPERATING SYSTEM. START, TEST, OPERATE, AND DEMONSTRATE SYSTEM PRIOR TO ACCEPTANCE. STANDARD WALL PANELS TO BE 1" THICK FOAMED IN PLACE URETHANE SANDWICH BETWEEN METAL SURFACES. FOAM PLASTICS SHALL MEET THE REQUIREMENTS OF SOUTHERN BUILDING CODE SECTION 717. EXTERIOR FLOOR, AND CEILING TO BE 26 GAUGE GALVANIZED ALUMINUM. CONCEALED EXTERIOR WALLS TO BE 26 GAUGE BARBOSSED GALVANIZED ALUMINUM. INTERIOR WALLS AND CEILING TO BE 22 GAUGE STAINLESS STEEL. INTERIOR FLOOR TO BE 1/8" THICK ALUMINUM TREAD PLATE EXPOSED EXTERIOR WALLS TO BE 22 GAUGE STAINLESS STEEL. ENTRANCE DOORS TO BE STANDARD 34"x78" WITH CYLINDER LOCK AND INSIDE SAFETY RELEASE HANDLE. UNIT TO HAVE NSF LABEL, AND BE COMPLETE WITH REFRIGERATION AIR-COOLED. PROVIDE COPPER CONDENSATION AND DRAIN LINES. PROVIDE PROPER ELECTRICAL CONNECTIONS, WIRING, SERVICE FITTINGS, ETC. PROVIDE STANDARD 10-YEAR PANEL WARRANTY AND 5-YEAR REFRIGERATION WARRANTY, AND OPERATION AND MAINTENANCE INSTRUCTIONS.



TYPICAL HORIZONTAL AHU DETAIL
SCALE N.T.S.

- LEGEND:**
- WOOD STUD WALL, 2"x @ 16" O.C. W/ 5/8" GYP. BOARD ON EA. SIDE
 - NEW FIRE BARRIER, GA FILE NO. WP 3514 SEE DETAIL THIS SHEET
 - POWER PANEL
 - EXHAUST FAN
 - 30 GAL WATER HEATER
 - BWR. LIGHT WITH 90 MIN. BATTERY BACKUP
 - EXT LIGHT, 90 MINUTE BATTERY BACK-UP
 - PULL CHAIN LIGHT, SELECTED BY OWNER
 - RECESSED CAN LIGHT, SELECTED BY OWNER
 - PENDANT STYLE LIGHTING, SELECTED BY OWNER
 - WALL MOUNTED LIGHT, SELECTED BY OWNER
 - EXISTING EXTERIOR WALL MOUNTED LIGHT
 - SWITCH
 - 3-WAY SWITCH
 - 2-WAY SURFACE MTD. FLUORESCENT LAMP, STEEL HOUSING
 - CEILING FAN W/ LIGHTS
 - HEAT / VENT / LIGHT