

DAMMON ENGINEERING, INC.
 CHIEF ENGINEER
 EMETT DAMMON, P.E.
 CHIEF ARCHITECT
 ROBERT WILTSE

1095 FLORIDA AVENUE
 SUDELL, LA, 70456
 OFFICE: 985-649-5332
 FAX: 985-641-5950

WEBSITE:
 WWW.DAMMONENGINEERING.COM
 EMAIL:
 DAMMONENG@BELL.SOUTH.NET

ARCHITECTURE
 ENGINEERING
 STUDIES
 PLANNING
 INVESTIGATION
 EXPERT WITNESS

RESTAURANT RENOVATION

ROB HOWELL
 SUNRISE ON 2ND ST.
 1929 2nd ST.
 SUDELL, LA
 70458

MECHANICAL PLAN

REV:

SCALE: AS NOTED

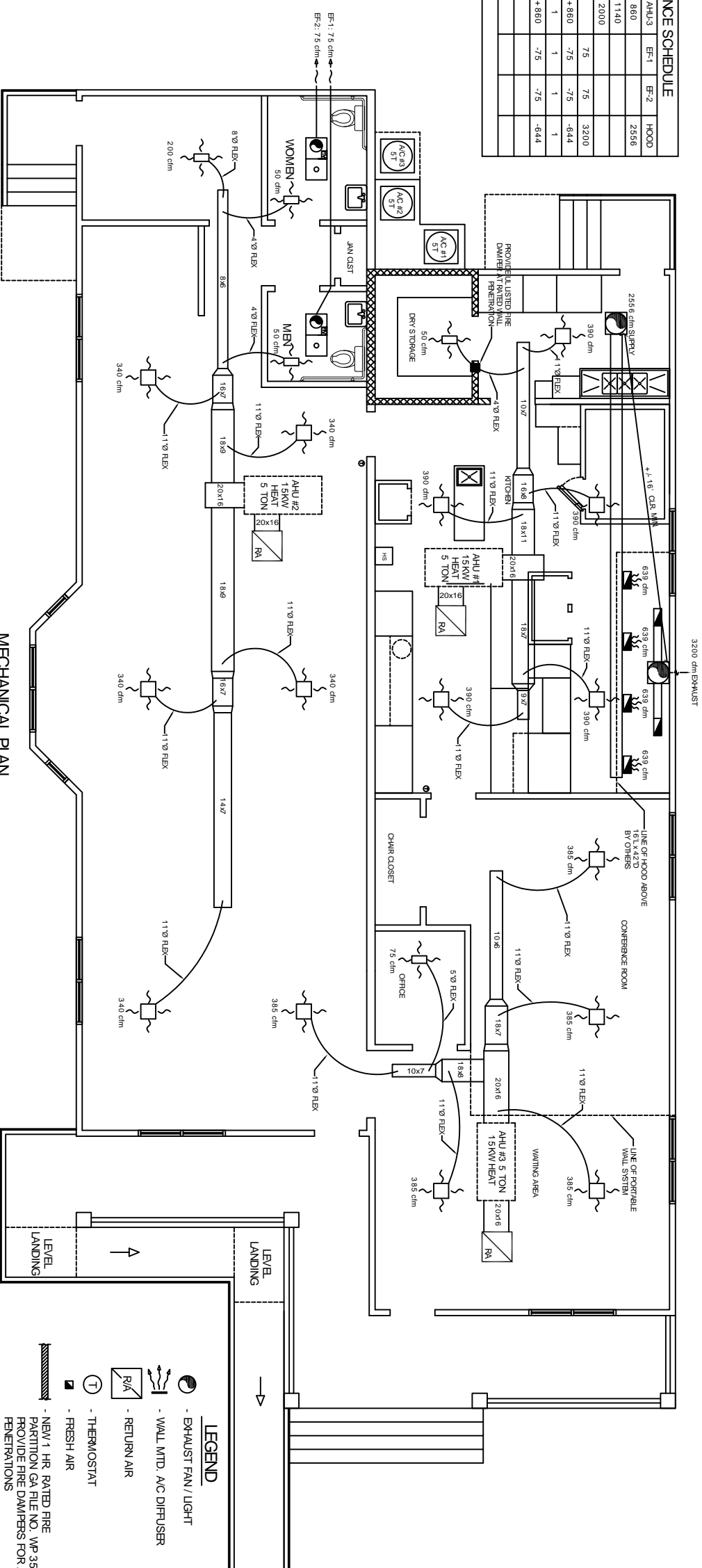
JOB#: 1983

DATE: 8-3-08

SHEET 8

M-1

OF 9



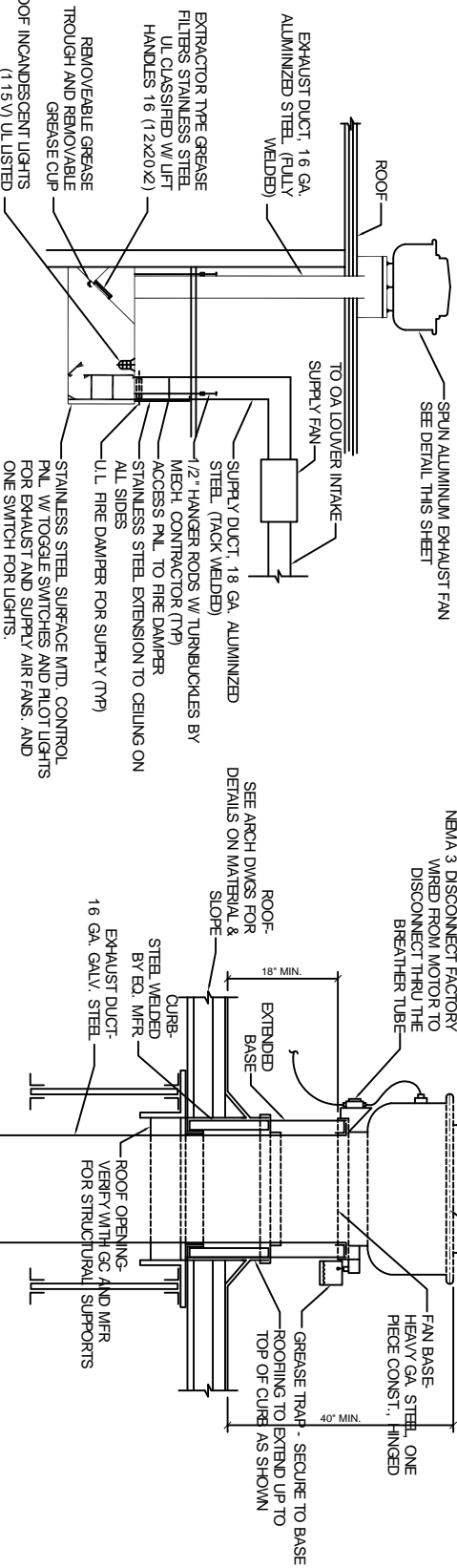
MECHANICAL PLAN
 SCALE 1/4" = 1'-0"

MECHANICAL NOTES

1. CONCEALED DUCTWORK TO BE UL-181, CLASS 1, FIBERGLASS DUCTBOARD. DUCTS SHALL BE SIZED TO LIMIT MAIN DUCTS TO 1000 CFM & SECONDARY DUCTS TO 800 CFM. TO BE INSTALLED PER SMACNA STANDARDS.
2. EXPOSED DUCTWORK TO BE GALVANIZED SHEET METAL PER SMACNA STANDARDS. LINE WITH NEOPRENE COATED 1.0" x 1.5" POUNDS PER CUBIC FOOT DUCT INSULATION.
3. ROUND FLEXIBLE DUCT TO BE UL-181, CLASS 1, AIR DUCT MATERIALS.
4. DUCT SIZES SHOWN ARE CLEAR INSIDE DIMENSIONS.
5. IN ALL SYSTEMS OVER 2000 CFM AND LESS THAN 15,000 CFM, SMOKE DETECTORS SHALL BE INSTALLED IN ACCORDANCE WITH NFPA 72 IN THE RETURN DUCT DOWNSTREAM OF THE AIR HANDLING UNIT AND ALL FILTERS TO AUTOMATICALLY STOP THE FAN. PROVIDE UL LISTED 125 °F FIRESTAT IN RETURN AIR OF EACH SYSTEM UNDER 2000 CFM TO SHUT DOWN THE FAN IN THE EVENT OF FIRE.
7. PROVIDE UL RATED FIRE DAMPERS WHERE REQUIRED AT ALL DUCT PENETRATIONS OF FIRE RATED ASSEMBLIES AND WHERE REQUIRED BY CODE, INCLUDING OUTSIDE AIR INTAKES.
8. CONDENSATE DRAINS TO BE PVC PIPE RUN TO PLUMBERS P-RAP WITHIN FIVE FEET OF AIR HANDLING UNITS.
9. ALL AIR HANDLING SYSTEMS TO BE BALANCED TO ASSURE PROPER AIR FLOWS PER PLANS.
10. ALL THERMOSTATS TO BE AUTOMATIC CHANGEDOVER WITH HEAT SWITCH.
11. EXHAUST FAN EQUAL TO BROAN MODEL NO. 100 CF. OR EQUAL. FAN SHALL BE CONTROLLED BY A SWITCH ON THE WALL IN THE SAME LOCATION AS LIGHT SWITCHES). PROVIDE BACK DRAFT DAMPER.
12. PROVIDE AND INSTALL WATER PROOF GRILLE VENT IN PROPER ROOF LOCATION FOR RUMBING FIXTURE EXHAUST.
13. ALL SUPPLY AIR VENTS SHALL BE SHOWN ON ARCH. DWGS.
14. LOCATE OUTDOOR UNITS AS SHOWN ON ARCH. DWGS.
15. REFRIGERANT LINES SHALL BE SIZED BY UNIT MANUFACTURER AND INSTALLED ACCORDING TO MANUFACTURERS INSTRUCTIONS.
16. FRESH AIR SHALL BE SUPPLIED TO EACH AIR HANDLER THROUGH EXTERIOR WALL DUCT SUPPLIED WITH A CONTROL DAMPER.
17. INSTAL FIRE DAMPER WHERE S.A. & R.A. DUCTS PENETRATE 1 HOUR RATED CEILINGS.
18. ALL ELECTRICAL, MECHANICAL, AND PLUMBING PENETRATING FIRE WALLS SHALL BE CALKED. (PENETRATIONS THROUGH RATED CONSTRUCTION SHALL BE SEALED WITH A MATERIAL CAPABLE OF PREVENTING THE PASSAGE OF FLAMES AND HOT GASES WHEN TESTED IN ACCORDANCE WITH ASTM-B9-14).
19. MECHANICAL PLANS ARE DRAWN SCHEMATICALLY.
20. AREA OF RE-USE SHALL BE DESIGNED IN ACCORDANCE WITH NFPA 92A. TO INCLUDE STAIRWELL PRESSURIZATION SYSTEMS. PROVIDE PROPER ACTIVATION AND CONTROL SYSTEMS.

KITCHEN HOOD SYSTEM NOTES

1. SUBCONTRACTOR TO SUBMIT SHOP DRAWINGS AND REVIEW PACKAGE SUITABLE FOR FIRE MARSHAL KITCHEN HOOD REVIEW.
2. SUBCONTRACTOR TO SUBMIT SHOP DRAWINGS AND REVIEW PACKAGE SUITABLE FOR FIRE MARSHAL KITCHEN HOOD CHEMICAL FIRE SUPPRESSION SYSTEM REVIEW.
3. PROVIDE GAS SHUTOFF VALVE FOR ALL EQUIPMENT UNDER HOOD CONNECTED TO HOOD EXHAUST FOR ALL SYSTEM.
4. PROVIDE SHUNT TRIP BREAKERS FOR ALL EQUIPMENT UNDER HOOD CONNECTED TO HOOD EXHAUST SYSTEM.



SECTION AT KITCHEN EXHAUST HOOD DETAIL
 N.T.S.

HVAC UNIT SCHEDULE					
NO.	COOLING CAPACITY BTU/HR	CFM	O.A.	HEAT ELEC.	COMMENTS
1	60,000	105	15 KW	208V, 1Ø 37.4 65A #2/4	EXISTING 5 TON, KITCHEN SERVICE
2	60,000	2,000	860	208V, 1Ø 37.4 65A #6/8	EXISTING 5 TON, DINING AREA SERVICE
3	60,000	2,000	860	208V, 1Ø 37.4 65A #10/12	MODEL: CARRIER 38TKV060-3-1-1 OR EQUAL

RESTURARANT - AIR BALANCE SCHEDULE						
OUTSIDE AIR FLOW (CFM)	AHU1	AHU2	AHU3	EF-1	EF-2	HOOD
RETURN AIR FLOW (CFM)	105	860	860			2636
SUPPLY AIR FLOW (CFM)	2000	2000	2000			
EXHAUST AIR FLOW (CFM)	+105	+860	+860	-75	-75	3200
BUILDING PRESSURE (CFM)	+105	+860	+860	-75	-75	-644
QUANTITIES	1	1	1	1	1	1
TOTAL PRESSURIZATIONS	+105	+860	+860	-75	-75	-644
REMARKS						
RESULTING BUILDING PRESSURIZATION (CFM) = +1031						

EXHAUST FAN SCHEDULE			
LOC.	CFM	VOLTAGE	TYPE
75	75	120	VENT
75	75	120	BROWN

EXHAUST HOOD DETAIL

EXHAUST DUCT, 16 GA. ALUMINIZED STEEL, FULLY WELDED

EXTRACTOR TYPE GREASE FILTERS STAINLESS STEEL UL CLASSIFIED W/ LIFT HANDLES 16 (12x20x2)

REMOVABLE GREASE TROUGH AND REMOVABLE INCANDESCENT LIGHTS (115V) UL LISTED

STAINLESS STEEL SURFACE MTD. CONTROL PNL W/ TOGGLE SWITCHES AND FLUOT LIGHTS FOR EXHAUST AND SUPPLY AIRFANS, AND ONE SWITCH FOR LIGHTS.

UL L FIRE DAMPER FOR SUPPLY (TYP) ALL SIDES

SEE ARCH DWGS FOR DETAILS ON MATERIAL & SLOPE

ROOF PENETRATION VERIFIED WITH GC AND MFR FOR STRUCTURAL

UPPLAST EXHAUST FAN DETAIL
 N.T.S.