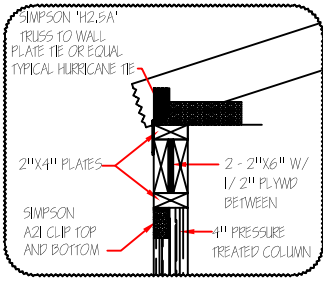
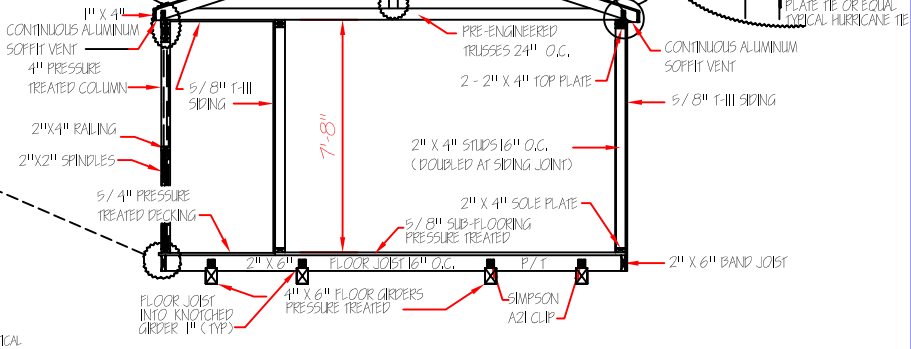
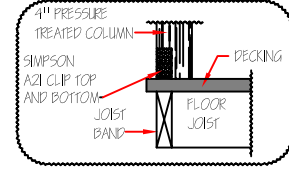


OPTIONAL METAL ROOFING
 OPTIONAL METAL ROOFING SHALL BE 29 GAUGE OVER 1/2" OSB SHEATHING WITH 29 GAUGE RIDGE CAP, EAVE TRIM AND RAKE TRIM. SCREEN CLOSURE OVER RIDGE OPENING.



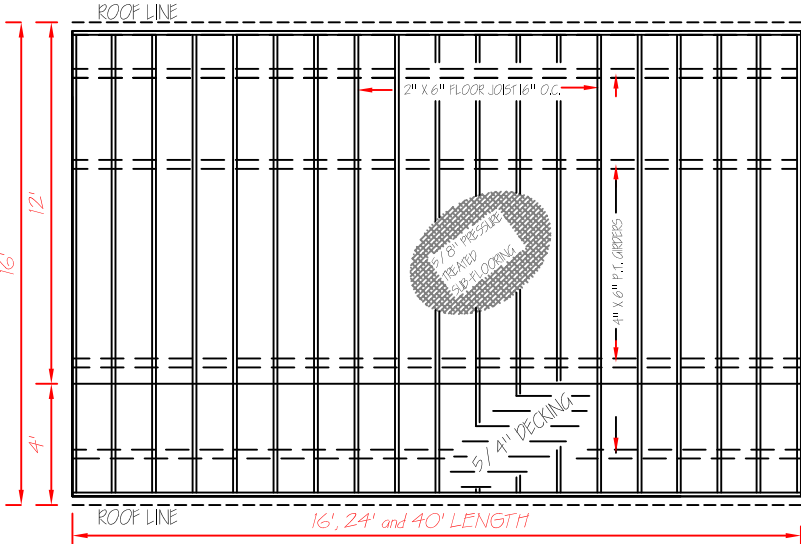
NOTES:
 WOOD TRUSSES SHALL COMPLY WITH R 502.11 AND DESIGN SHALL COMPLY WITH ANS1/1P11 AND APPROVED ACCORDING TO R 106.1, (R - INTERNATIONAL BUILDING CODE)

30 YEAR FIBERGLASS SHINGLES OVER ONE PLY 15# FELT OVER 1/2" OSB SHEATHING.



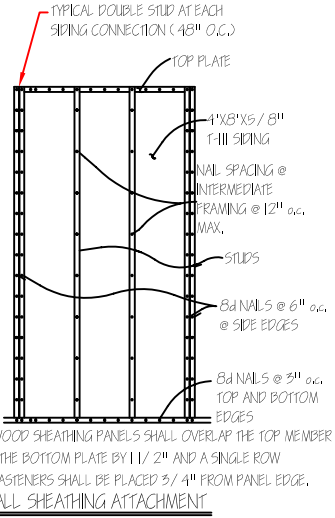
ANCHORS: IRON ROOF DOUBLE HEAD DOUBLE HELIX EARTH ANCHORS, 30" LONG BY 5/4" W/ 2-4" HELIX FOR SOIL CLASS 2" 1-1/4" FRAME TIE GALVANIZE STRAP WITH BUCKLE AND SLOTTED BOLTS CENTERED BETWEEN EACH FIBR. GIRDERS, FOUR REQUIRED
 WINDOW HEADERS SHALL BE 2 - 2" X 4" WIDTH VERTICAL AND DOORS 2 - 2" X 6" WIDTH VERTICAL.

Typical Section



FLOOR FRAMING

MEASURES SHALL BE TAKEN DURING CONSTRUCTION TO INSURE THAT ONLY WORKMANSHIP OF THE HIGHEST QUALITY IS PERFORMED AND THAT ONLY THE BEST MATERIALS AND PRACTICES OF CONSTRUCTION ARE USED FOR A QUALITY AND SOUND BUILDING.



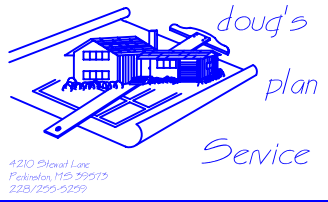
PLYWOOD SHEATHING PANELS SHALL OVERLAP THE TOP MEMBER AND THE BOTTOM PLATE BY 1/2" AND A SINGLE ROW OF FASTENERS SHALL BE PLACED 3/4" FROM PANEL EDGE.
WALL SHEATHING ATTACHMENT

NOTE: THE UTILITY FLOORING, WALLS AND ROOF ARE DESIGNED TO COMPLY WITH THE 2003, 2006 AND 2009 INTERNATIONAL BUILDING AND INTERNATIONAL RESIDENTIAL CODES. THEY ARE NOT INTENDED FOR RESIDENTIAL USE. FOR RESIDENTIAL USAGE 'ALL' STATE AND LOCAL CODES MUST BE MET INCLUDING BUT NOT LIMITED TO SIZES, OPENINGS, CEILING HEIGHTS, ELECTRICAL, PLUMBING ETC.

- ENGINEERS' NOTES:
1. FOUNDATIONS PIERS, TIE-DOWNS AND ANCHORS SHALL MEET THE REQUIREMENTS OF THE "PERMANENT FOUNDATIONS GUIDE OF MANUFACTURED HOUSING" AS PUBLISHED BY HUD IN SEPTEMBER 1996, AND THE HUD HANDBOOK 4145-J REV. 2.
 2. NO FIELD SUPERVISION PROVIDED UNDER THIS SEAL.
 3. NO ADMINISTRATION PROVIDED UNDER THIS SEAL.

Side Porch Cabin

DAMMON ENGINEERING
 1095 FLORIDA AVE.
 SLIDELL, LOUISIANA
 985 - 649 - 5832



GRACELAND PROPERTIES LLC
 P.O. BOX 665
 CUNNINGHAM, KY 42035
 601 - 799 - 4545
 Copyright (C) 2008 by Graceland Properties LLC
 All Rights Reserved, including the rights of reproduction in whole or in part in any form.