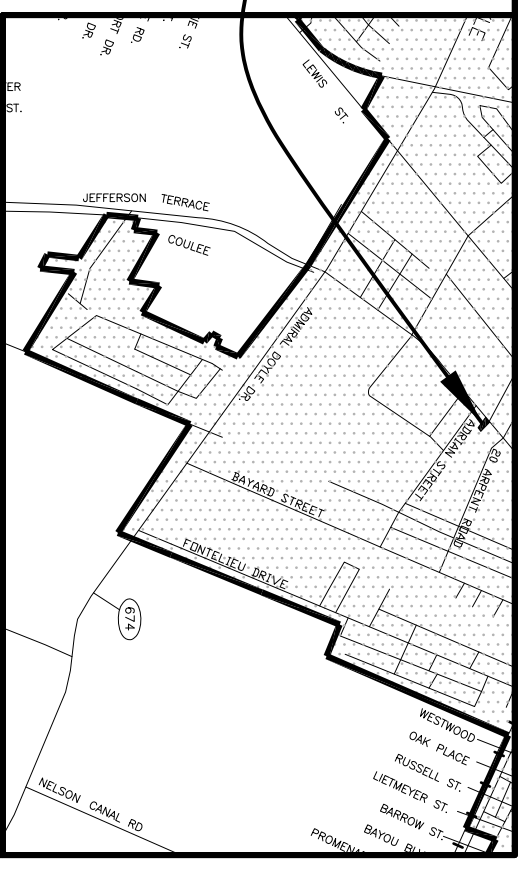


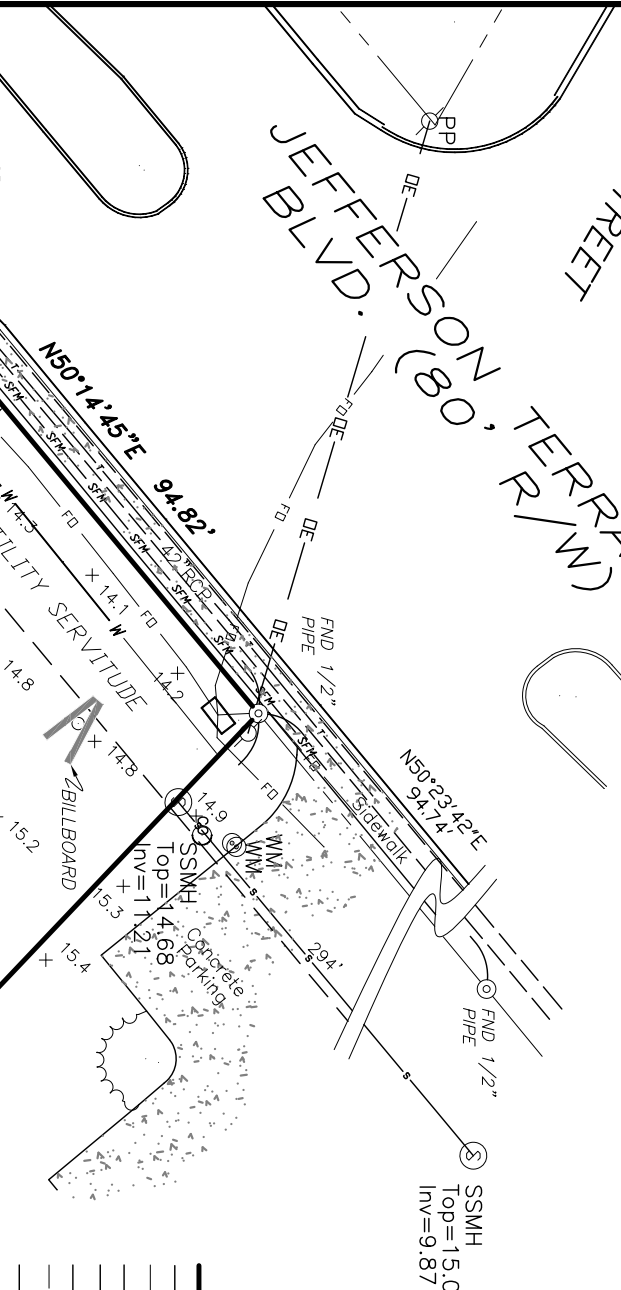
**BASIS OF BEARINGS:**  
BEARINGS AND DISTANCES ARE BASED ON GPS OBSERVATIONS WITH THE FOLLOWING CRITERIA:  
 Coordinate System US State Plane 1983  
 Project Datum NAD 1983 (2011)  
 Coordinate Units US FT  
 Zone  
 Geoid Model  
 Projected & Der. Units  
 Louisiana South 1702  
 GEOID09  
 US FT

Scale: 1"=30'

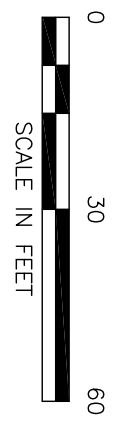
**PROPERTY SHOWN**



**VICINITY MAP**  
SCALE: 1"=3000'



- LEGEND:**
- ⊙ FOUND MONUMENT (DENTED)
  - ⊙ SEWER MANHOLE
  - ⊙ CATCH BASIN
  - ⊙ DROP INLET
  - ⊙ WATER METER
  - ⊙ POWER METER
  - ⊙ PROPERTY POLE
  - UTILITY SERVITUDE
  - WATER LINE
  - GRAVITY SEWER LINE
  - SEWER FORCE MAIN
  - TELEPHONE LINE
  - FIBER OPTIC LINE
  - DVERHEAD ELECTRIC



**PLAT OF REFERENCE:**  
1. PLAT OF SURVEY SHOWING EAST IBERIA ACRES - PHASE II PREPARED BY PAUL E BILEY, PLS No. 4809, NOT DATED.

**FLOOD NOTE:**  
THIS PROPERTY HAS BEEN DETERMINED TO BE LOCATED IN ZONE X AS INDICATED BY THE FLOOD INSURANCE RATE MAP FOR IBERIA PARISH, LOUISIANA COMMUNITY-PANEL NUMBER 220082 AND MAP NUMBER 22045C0206E, DATED DECEMBER 2, 2011.

**GENERAL NOTES:**  
1. THIS SURVEYOR HAS MADE NO ATTEMPT REGARDING RESEARCH INTO SERVITUDES, EASEMENTS, RIGHT OF WAYS, OR PIPELINES AND SHALL NOT BE RESPONSIBLE FOR SUCH ENCUMBRANCES. IN ADDITION, NO ATTEMPT HAS BEEN MADE BY THIS SURVEYOR TO VERIFY TITLE OR ACTUAL LEGAL OWNERSHIP.  
2. THIS SURVEYOR CAN NOT VALIDATE THE ACCURACY OF UNDERGROUND UTILITIES LOCATED VIA LA ONE CALL MARKINGS AND IS NOT RESPONSIBLE FOR UTILITIES NOT MARKED OR SHOWN ON THIS PLAT OF SURVEY.



Revised: 7/11/2012

**PLAT SHOWING PROPERTY AND IMPROVEMENTS BELONGING TO TROY T. BIENVENU**  
BEING LOT 5 OF BLOCK ONE - 0.373 ACRES LOCATED IN SECTION 38, T-12-S, R-6-E, IBERIA PARISH, LOUISIANA

<b>SURVEYOR</b>	<b>DRAWN BY</b>	<b>BOOK NO.</b>	<b>PAGE NO.</b>
KDC	KDC	2012-02	64
<b>DATE</b>	<b>SCALE</b>	<b>PROJECT NO.</b>	
JUNE 19, 2012	1"=30'	2012-02064	
<b>ACAD. DWG. NO.</b>	<b>SHEET</b>	<b>1 OF 1</b>	
SEE LOWER LEFT CORNER			

**C & R Land Surveying, LLC**  
232 Dustin Circle  
Broussard, LA 70518  
Cell: 337-322-6930  
Office: 337-453-1096

I CERTIFY THAT THIS PLAT REPRESENTS AN ACTUAL GROUND SURVEY CONDUCTED BY ME OR UNDER MY DIRECT SUPERVISION, IN ACCORDANCE WITH THE APPLICABLE STANDARDS OF PRACTICE FOR A CLASS "C" SURVEY, AND THAT NO ENCROACHMENTS EXIST EITHER WAY ACROSS ANY OF THE PROPERTY LINES, UNLESS OTHERWISE SHOWN.