

**HVAC NOTES**

1. CONCEALED DIFFUSERS TO BE GALVANIZED SHEET METAL UNITS WITH NONPUNE COATED 1.0" THICK, 1.5 POUNDS PER CUBIC FOOT DUCT INSULATION, MIN R-6, INSTALLED PER SMACNA STANDARDS.
2. EXPOSED DIFFUSERS TO BE GALVANIZED SHEET METAL UNITS WITH NONPUNE COATED 1.0" THICK, 1.5 POUNDS PER CUBIC FOOT DUCT INSULATION, MIN R-6, INSTALLED PER SMACNA STANDARDS.
3. CONDENSATE & OVERFLOW DRAIN LINES SHALL BE PVC SCH 40 AND SHALL BE INSTALLED WITHIN FIVE FEET OF AIR HANDLING UNITS.
4. ROUND FLEXIBLE DUCT TO BE UL-181, CLASS 1, AIR DUCT MATERIALS.
5. DUCT SIZES SHOWN ARE CLEAR INSIDE DIMENSIONS.
6. IN ALL SYSTEMS OVER 2000 CFM AND LESS THAN 15,000 CFM, SMOKE DETECTORS SHALL BE INSTALLED IN ACCORDANCE WITH NFPA 72E IN THE RETURN DUCT DOWNSTREAM OF THE AIR HANDLING UNIT AND ALL FILTERS TO AUTOMATICALLY STOP THE FAN.
7. PROVIDE U.L. LISTED 1.25" FRESH AIR RETURN AIR OF EACH SYSTEM UNDER 2000 CFM TO SHUT DOWN THE FAN IN THE EVENT OF FIRE.
8. PROVIDE U.L. LISTED DIFFUSERS WHERE REQUIRED AT ALL DUCT PENETRATIONS OF EXTERIOR WALLS AND CEILING. PROVIDE U.L. LISTED DIFFUSERS WHERE REQUIRED AT ALL DUCT PENETRATIONS OF EXTERIOR WALLS AND CEILING.
9. ALL AIR HANDLING SYSTEMS TO BE BALANCED TO ASSURE PROPER AIR FLOWS PER PLANS.
10. ALL THERMOSTATS TO BE AUTOMATIC CHANGEOVER WITH HEAT SWITCH.
11. EXHAUST FAN EQUAL TO ACH50 PP1U.10 OR EQUAL. FAN SHALL BE CONTROLLED BY A SWITCH ON THE WALL IN THE SAME LOCATION AS LIGHT SWITCHES. PROVIDE BACK DRAFT DAMPER.
12. PROVIDE AND INSTALL WATER PROOF GULLE VENT IN PROPER ROOF LOCATION FOR PLUMBING FUTURE EXHAUST.
13. ALL SUPPLY AIR VENTS SHALL BE EQUIPPED WITH AIR CONTROL DAMPERS.
14. LOCATE OUTDOOR UNITS AS SHOWN ON ARCH. DWGS.
15. REFRIGERANT LINES SHALL BE SIZED BY UNIT MANUFACTURER AND INSTALLED ACCORDING TO MANUFACTURER'S INSTRUCTIONS.
16. ALL ELECTRICAL, MECHANICAL, AND PLUMBING PENETRATING FIRE WALLS SHALL BE FIRE CALKED. PENETRATIONS THROUGH RATED CEILING CONSTRUCTION SHALL BE SEALED WITH A MATERIAL CAPABLE OF PREVENTING THE PASSAGE OF FLAMES AND HOT GASES WHEN TESTED IN ACCORDANCE WITH ASTM-E9-14.
17. ALL MECHANICAL SYMBOLS ARE DRAWN DIAGRAMMATICALLY. CONTRACTOR TO VERIFY WITH OWNER LOCATION OF VENTS, DAMPERS, REGISTERIES, ETC.
18. TYPICAL DUCTWORK LENGTH NOT TO EXCEED 12'-0".
19. COORDINATE AND REPORT TO THE ARCHITECT THE LOCATION OF ALL DIFFUSERS AND AIR HANDLING UNITS.
20. FINAL LOCATION OF TEMPERATURE CONTROLS TO BE COORDINATED WITH OWNER AT JOB SITE.
21. PROVIDE AND INSTALL SMOKE DETECTORS AS APPROVED BY LOCAL AHS. PLACE NEAR RAJA AND SEA OPENINGS OF AHU AND PROVIDE WITH ACCESS PANEL, WIRING BY ELECTRICAL CONTRACTOR.
22. FRESH AIR INTAKES ARE REQUIRED TO HAVE MOTORIZED OR GRAVITY DAMPERS TO SHUT OFF WHEN SYSTEM IS NOT RUNNING.
23. PROVIDE AND INSTALL SMOKE DETECTORS AS APPROVED BY LOCAL AHS. PLACE NEAR RAJA AND SEA OPENINGS OF AHU AND PROVIDE WITH ACCESS PANEL, WIRING BY ELECTRICAL CONTRACTOR.
24. FRESH AIR INTAKES ARE REQUIRED TO HAVE MOTORIZED OR GRAVITY DAMPERS TO SHUT OFF WHEN SYSTEM IS NOT RUNNING.

**SINGLE PACKAGE ROOF-TOP AC UNITS SCHEDULE**

UNIT NUMBER	TOTAL TONS	TOTAL CFM	COOLING CAPACITY		ELECTRICAL DATA		MODEL NUMBER	UNIT WEIGHT							
			SEASIDE	TRANE TOTAL	PH	UNIT WEIGHT									
RTU-1	4000	400	119,000	101,410	80	67	60.1	57.9	208	3	17,459.6	60	200,000	15C120F	1200
RTU-2	4000	400	119,000	101,410	80	67	60.1	57.9	208	3	17,459.6	60	200,000	15C120F	1200
RTU-3	6000	400	126,000	131,000	80	67	60.8	56.9	208	3	17,911.00	100	250,000	15D160F	2500

**MINI-SPLIT DUCTLESS AC SYSTEM SCHEDULE**

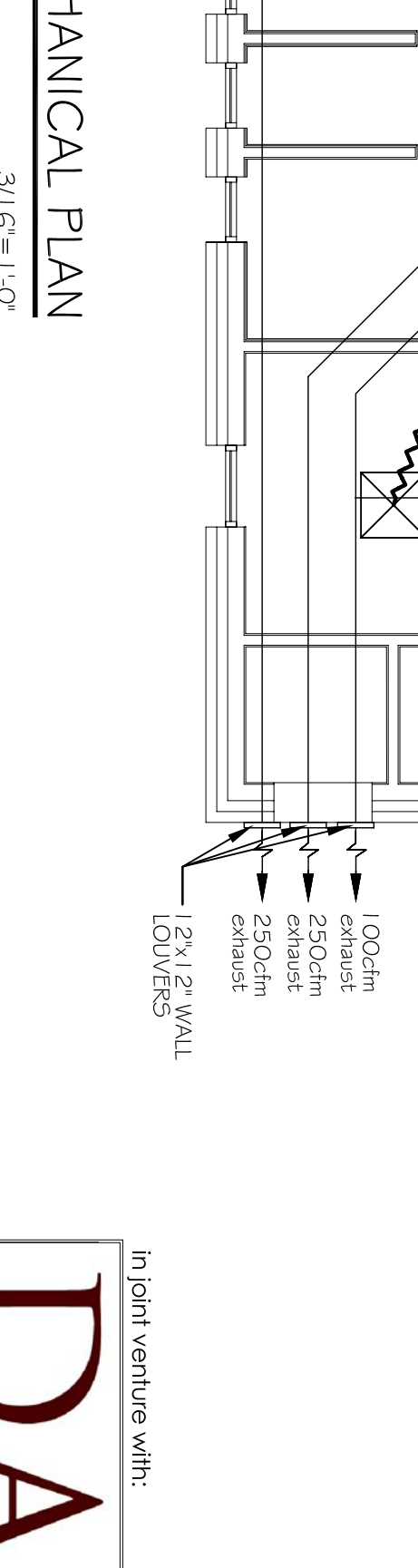
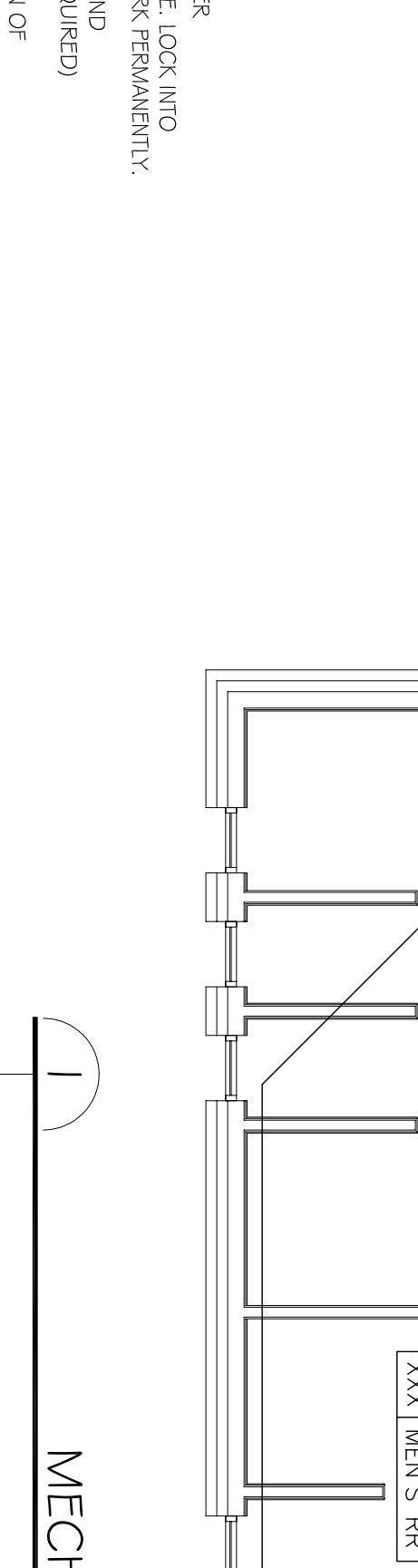
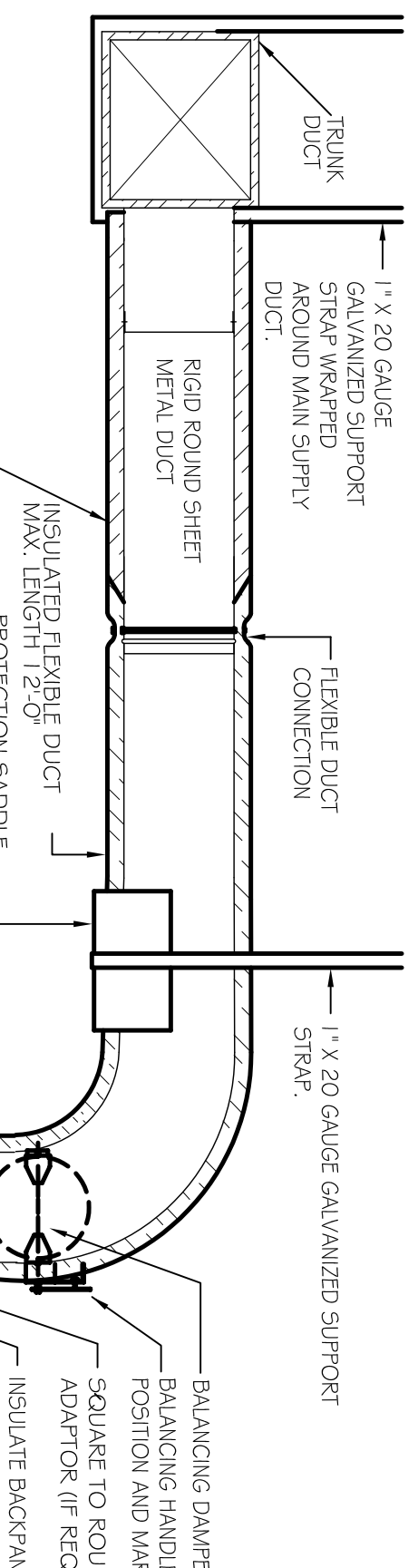
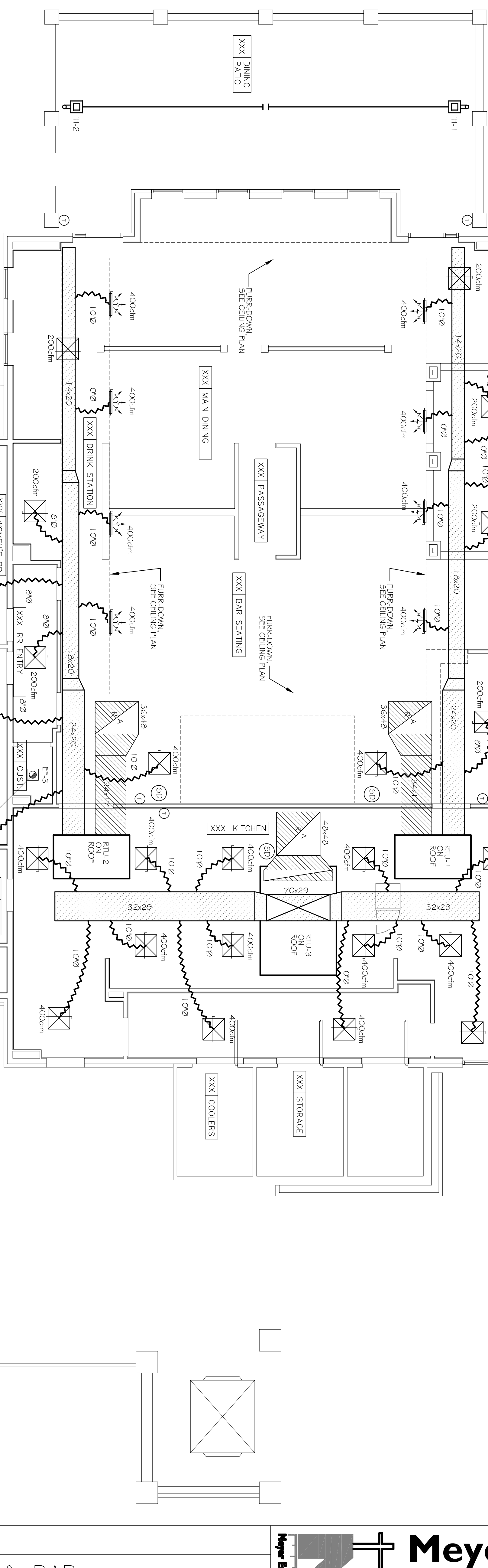
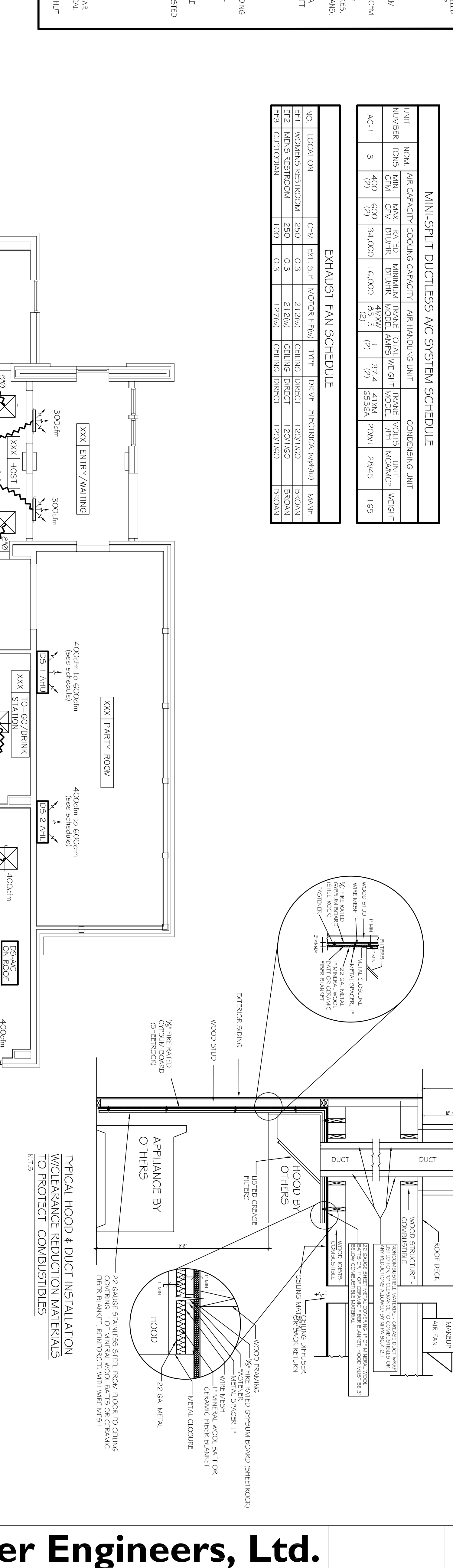
UNIT NUMBER	ROOM	TONS	TOTAL CFM	COOLING CAPACITY		ELECTRICAL DATA		MODEL NUMBER	UNIT WEIGHT
				SEASIDE	TRANE TOTAL	PH	UNIT WEIGHT		
AC-1	3	120	12,000	16,000	1.2	1.2	1.2	1.2	1.2

**EXHAUST FAN SCHEDULE**

NO.	LOCATION	CFM	EXT. S.P.F.	MOTOR HP(W)	TYPE	DRIVE	ELECTRICAL(V/PH/Hz)	MAINF.
EF-1	WOMEN'S RESTROOM	250	0.3	2.12(W)	CEILING DIRECT	120V/1/60	BROAN	
EF-2	WOMEN'S RESTROOM	250	0.3	2.12(W)	CEILING DIRECT	120V/1/60	BROAN	
EF-3	RESTROOM	100	0.3	1.21(W)	CEILING DIRECT	120V/1/60	BROAN	

**GAS-FIRED INFARED TUBE HEATERS SCHEDULE**

UNIT NO.	SERVICE AREA	BTUH	MINIMUM MOUNT HT.	ELECTRICAL(V/PH/Hz/amps)
H-1	DINING PATIO	50,000	10 FT.	120V/1/60/4.5a
H-2	DINING PATIO	50,000	10 FT.	120V/1/60/4.5a



**DAMMON ENGINEERING ARCHITECTS & ENGINEERS**

Chief Engineer: Brian Metch, PE  
 354 Old Spanish Trail  
 Mandeville, Louisiana 70448  
 F: 985.641.3590

MECHANICAL PLAN  
 MUGSHOTS GRILL & BAR  
 RIDGELAND, MS

Project no. 20-1348  
 JTL  
 checked: CND  
 date: 08.12.2014  
 revised: 00.00.0000  
 00.00.0000