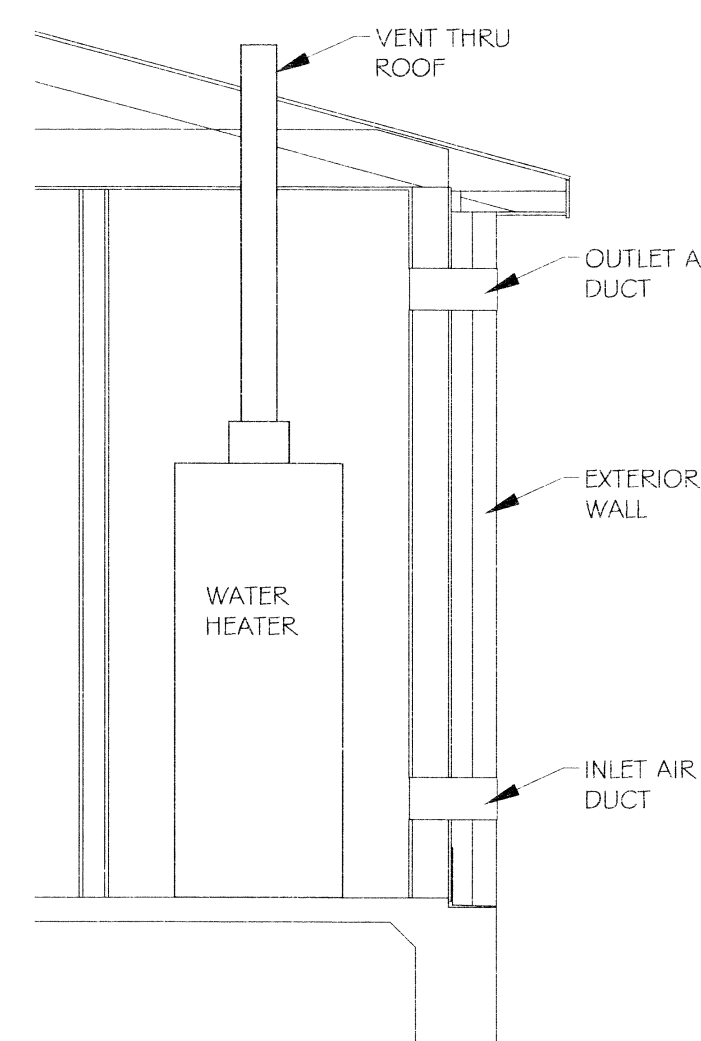


- ### HVAC NOTES
1. CONCEALED DUCTWORK TO BE GALVANIZED SHEET METAL LINED WITH NEOPRENE COATED 1.0" THICK, 1.5 POUNDS PER CUBIC FOOT DUCT INSULATION, MIN R-6. INSTALLED PER SMACNA STANDARDS.
 2. EXPOSED DUCTWORK TO BE GALVANIZED SHEET METAL LINED WITH NEOPRENE COATED 1.0" THICK, 1.5 POUNDS PER CUBIC FOOT DUCT INSULATION, MIN R-6. INSTALLED PER SMACNA STANDARDS.
 3. CONDENSATE & OVERFLOW DRAIN LINES SHALL BE PVC SCH 40 AND SHALL BE INSTALLED COMPLETELY SEPARATE TO SANITARY SEWER. DRAINS TO BE RUN TO PLUMBERS P-TRAP WITHIN FIVE FEET OF AIR HANDLING UNITS.
 4. ROUND FLEXIBLE DUCT TO BE UL-181, CLASS 1, AIR DUCT MATERIALS.
 5. DUCT SIZES SHOWN ARE CLEAR INSIDE DIMENSIONS.
 6. IN ALL SYSTEMS OVER 2000 CFM AND LESS THAN 15,000 CFM, SMOKE DETECTORS SHALL BE INSTALLED IN ACCORDANCE WITH NFPA 72E IN THE RETURN DUCT DOWNSTREAM OF THE AIR HANDLING UNIT AND ALL FILTERS TO AUTOMATICALLY STOP THE FAN.
 7. PROVIDE U.L. LISTED 125 FPM FIRE STAT IN RETURN AIR OF EACH SYSTEM UNDER 2000 CFM TO SHUT DOWN THE FAN IN THE EVENT OF FIRE.
 8. PROVIDE U.L. RATED FIRE DAMPERS WHERE REQUIRED AT ALL DUCT PENETRATIONS OF FIRE-RATED ASSEMBLIES AND WHERE REQUIRED BY CODE, INCLUDING OUTSIDE AIR INTAKES.
 9. ALL AIR HANDLING SYSTEMS TO BE BALANCED TO ASSURE PROPER AIR FLOWS PER PLANS.
 10. ALL THERMOSTATS TO BE AUTOMATIC CHANGEOVER WITH HEAT SWITCH.
 11. EXHAUST FAN EQUAL TO ACME PRN-110 OR EQUAL. FAN SHALL BE CONTROLLED BY A SWITCH ON THE WALL IN THE SAME LOCATION AS LIGHT SWITCH(S). PROVIDE BACK DRAFT DAMPER.
 12. PROVIDE AND INSTALL WATER PROOF GRILLE VENT IN PROPER ROOF LOCATION FOR PLUMBING FIXTURE EXHAUST.
 13. ALL SUPPLY AIR VENTS SHALL BE EQUIPPED WITH AIR CONTROL DAMPERS.
 14. LOCATE OUTDOOR UNITS AS SHOWN ON ARCH. DWGS.
 15. REFRIGERANT LINES SHALL BE SIZED BY UNIT MANUFACTURER AND INSTALLED ACCORDING TO MANUFACTURER'S INSTRUCTIONS.
 16. FRESH AIR SHALL BE SUPPLIED TO EACH AIR HANDLER THROUGH EXTERIOR WALL DUCT SUPPLIED WITH A CONTROL DAMPER.
 17. INSTALL FIRE DAMPER WHERE S.A. & R.A. DUCTS PENETRATE 1 HOUR RATED CEILING.
 18. ALL ELECTRICAL, MECHANICAL, AND PLUMBING PENETRATING FIRE WALLS SHALL BE FIRE CAULKED. (PENETRATIONS THROUGH RATED CONSTRUCTION SHALL BE SEALED WITH A MATERIAL CAPABLE OF PREVENTING THE PASSAGE OF FLAMES AND HOT GASES WHEN TESTED IN ACCORDANCE WITH ASTM E-814)
 19. ALL MECHANICAL SYMBOLS ARE DRAWN DIAGRAMMATICALLY. CONTRACTOR TO VERIFY WITH OWNER LOCATIONS OF VENTS, DAMPERS, REGISTERS, ETC.
 20. FLEXIBLE DUCTWORK LENGTH NOT TO EXCEED 12'-0".
 21. REFER TO REFLECTED CEILING PLAN FOR FINAL GRILLE AND DIFFUSER LOCATIONS AND COORDINATE AS REQUIRED.
 22. FINAL LOCATION OF TEMPERATURE CONTROLS TO BE COORDINATED WITH OWNER AT JOB SITE.
 23. PROVIDE AND INSTALL SMOKE DETECTORS AS APPROVED BY LOCAL AHJ'S. PLACE NEAR RIA AND SIA OPENINGS OF AHU AND PROVIDE, WITH ACCESS PANEL, WIRING BY ELECTRICAL CONTRACTOR.
 24. FRESH AIR INTAKES ARE REQUIRED TO HAVE MOTORIZED OR GRAVITY DAMPERS TO SHUT OFF WHEN SYSTEM IS NOT RUNNING.



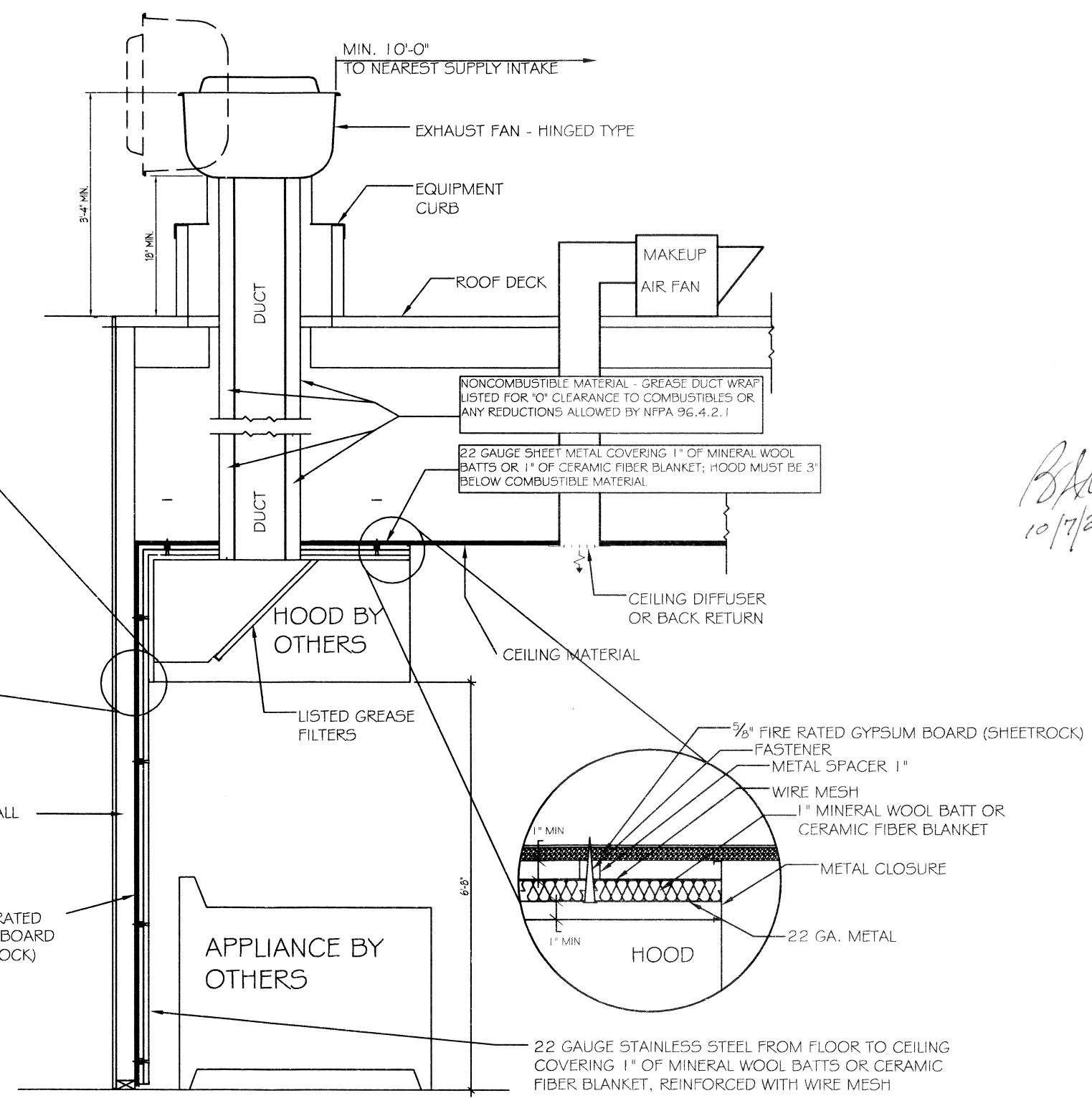
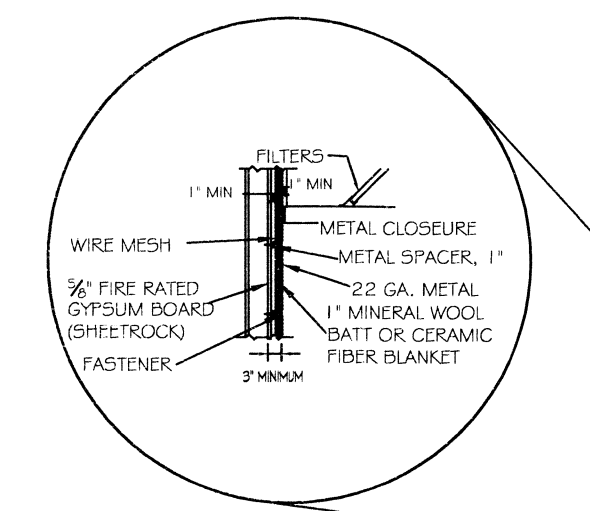
WATER HEATER VENTILATION DETAIL
N.T.S.

SINGLE PACKAGE ROOF-TOP A/C UNITS SCHEDULE													TRANE				
UNIT NUMBER	TOTAL CFM	MINIMUM OUTSIDE AIR CFM	EXT. STATIC PRESSURE IN W.G.	COOLING CAPACITY				ELECTRICAL DATA				MODEL NUMBER	UNIT WEIGHT				
				TOTAL BTU/H	SENSIBLE BTU/H	ENTERING D.B.F.	W.B.F.	LEAVING D.B.F.	W.B.F.	VOLT.	PH.			FAN H.P.	UNIT MCA	UNIT MOCF	HEATING GAS BTU/H
RTU-1	4000	400	0.50	119,000	101,410	80	67	60.1	57.9	208	3	1.7	49.6	60	200,000	Y5C120F	1800
RTU-2	4000	400	0.50	119,000	101,410	80	67	60.1	57.9	208	3	1.7	49.6	60	200,000	Y5C120F	1800
RTU-3	6000	400	0.50	186,000	131,000	80	67	60.8	56.9	208	3	3	75	100	250,000	Y5D180F	2500

MINI-SPLIT DUCTLESS A/C SYSTEM SCHEDULE												
UNIT NUMBER	NOM. TONS	AIR CAPACITY MIN. CFM	AIR CAPACITY MAX. CFM	COOLING CAPACITY RATED BTU/H	MINIMUM BTU/H	TRANE MODEL		CONDENSING UNIT				
						TRANE MODEL	WEIGHT	VOLTS /PH	UNIT MCA/MCP	WEIGHT		
DS-AC	3	400 (2)	600 (2)	34,000	16,000	4MXW 8515 (2)	1 (2)	37.4	4TXM 6536A	208V1	28V45	165

EXHAUST FAN SCHEDULE								
NO.	LOCATION	CFM	EXT. S.P.	MOTOR HP(w)	TYPE	DRIVE	ELECTRICAL(w/ph/rz)	MANF.
EF1	WOMEN'S RESTROOM	250	0.3	212(w)	CEILING DIRECT	120V1/60	BROAN	
EF2	MENS RESTROOM	250	0.3	212(w)	CEILING DIRECT	120V1/60	BROAN	
EF3	CUSTODIAN	100	0.3	127(w)	CEILING DIRECT	120V1/60	BROAN	

GAS-FIRED INFARED TUBE HEATERS SCHEDULE				
UNIT NO.	SERVICE AREA	BTUH	MINIMUM MOUNT HT.	ELECTRICAL(w/ph/rz/amps)
IH-1	DINING PATIO	50,000	10 FT.	120V1/60/4.8a
IH-2	DINING PATIO	50,000	10 FT.	120V1/60/4.8a



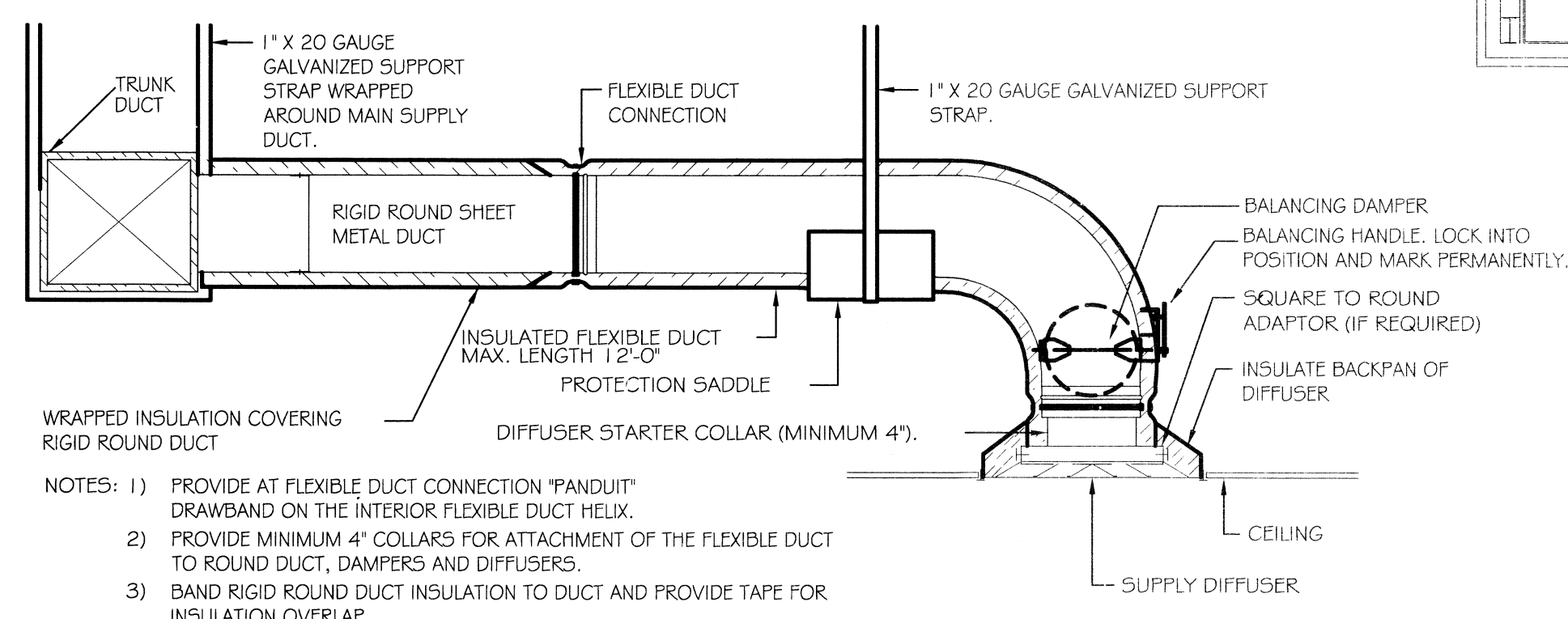
TYPICAL HOOD & DUCT INSTALLATION
W/CLEARANCE REDUCTION MATERIALS
TO PROTECT COMBUSTIBLES
N.T.S.

HVAC LEGEND

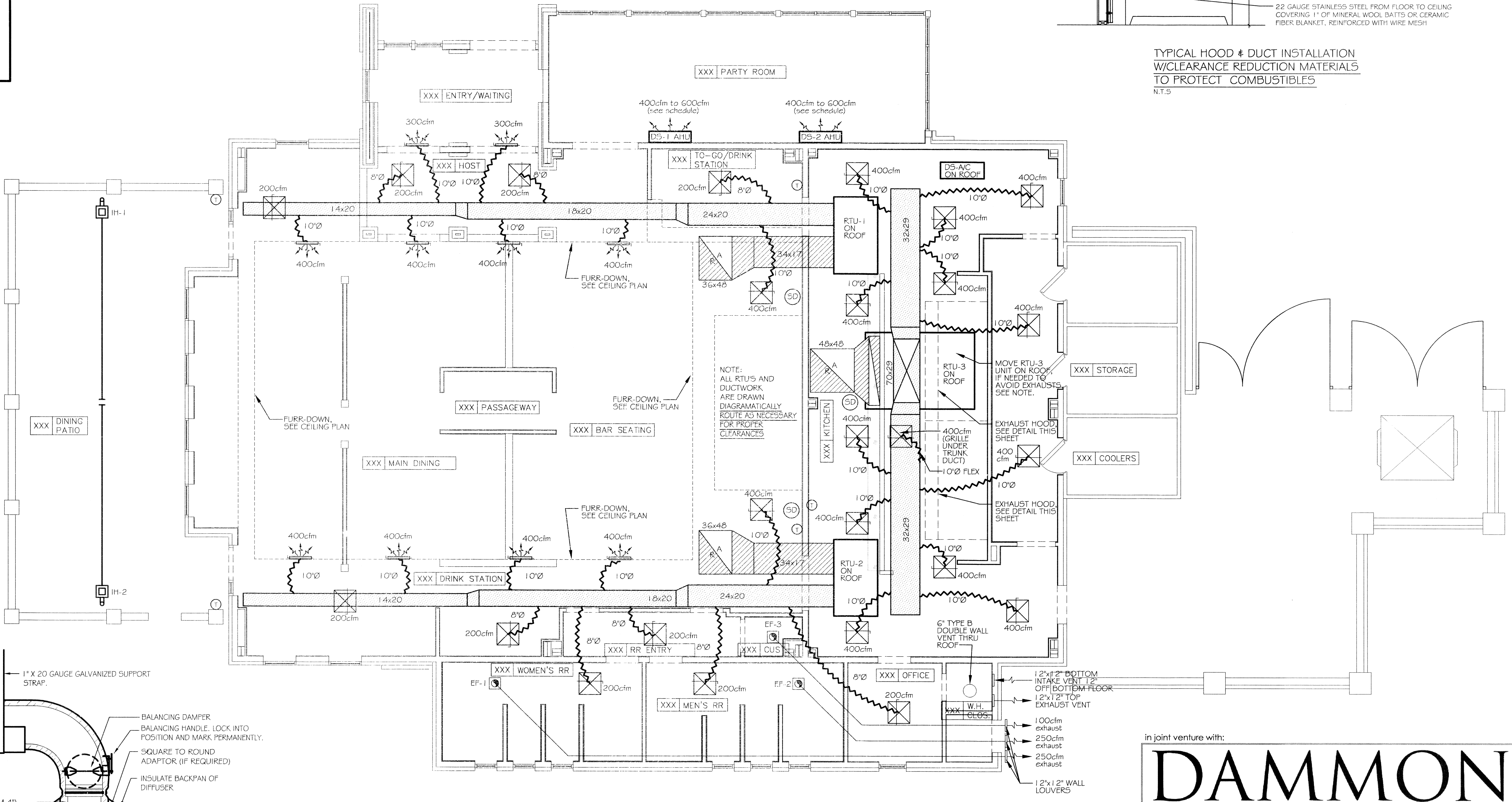
- 2x2 SUPPLY AIR GRILLE W/DAMPER
- RETURN AIR GRILLE
- SIDE-WALL SUPPLY AIR GRILLE W/DAMPER
- ROOFTOP A/C UNIT
- DUCTLESS MINI-SPLIT SYSTEM WALL-MTD. AIR HANDLING UNIT
- EXHAUST FAN
- THERMOSTAT
- INLINE DUCT SMOKE DETECTOR
- INFARED GAS-FIRED TUBE HEATERS
- SUPPLY AIR DUCT
- RETURN AIR DUCT
- ROUND FLEX DUCT, MAX. LENGTH 12'-0", MIN. R-6. PROVIDE MAN. DAMPER AT DIFFUSER CONNECTIONS.

NOTE-1: MECHANICAL PLAN IS DRAWN DIAGRAMMATIC. DUCT LOCATIONS ARE FOR REFERENCE ONLY. FIELD LOCATE AS NEEDED BETWEEN JOISTS OR TRUSSES.

NOTE-2: COORDINATE LOCATION OF ALL SUPPLY AIR DIFFUSERS, RETURN AIR GRILLES, EXHAUST FANS, ETC... WITH LIGHTING PLAN.

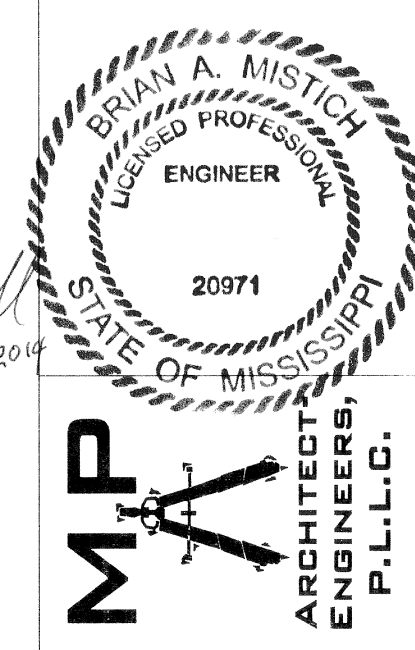


- WRAPPED INSULATION COVERING RIGID ROUND DUCT
- NOTES:
- 1) PROVIDE AT FLEXIBLE DUCT CONNECTION "PANDUIT" DRAWBAND ON THE INTERIOR FLEXIBLE DUCT HELIX.
 - 2) PROVIDE MINIMUM 4" COLLARS FOR ATTACHMENT OF THE FLEXIBLE DUCT TO ROUND DUCT, DAMPERS AND DIFFUSERS.
 - 3) BAND RIGID ROUND DUCT INSULATION TO DUCT AND PROVIDE TAPE FOR INSULATION OVERLAP.



MECHANICAL PLAN
3/18'-1'-0"

project no. 20-1348
drawn JTL
checked CKD
date 10.06.2014
revised 00.00.0000
00.00.0000
00.00.0000



MP Architect-Engineers, P.L.L.C.
RICHARD C. MEYER, P.E.
JAMES J. PAPIA, ARCHITECT

MECHANICAL PLAN & DETAILS
MUGSHOTS GRILL & BAR
RIDGELAND, MISSISSIPPI
HARBOR POINTE DEVELOPMENT

in joint venture with:

DAMMON ENGINEERING, INC.

Architects & Engineers

Chief Engineer: Brian Mistich, PE
554 Old Spanish Trail
Slidell, LA 70458

www.dammonengineering.com
dammoneng@bellsouth.net
PH: 985.649.5832
F: 985.641.5990

sheet no. M001
of 42 sheets