



# BEVERAGE-AIR

3779 Champion Blvd., Winston-Salem, NC 27105  
1-888-845-9800 Fax# 1-336-245-6453  
<http://www.Beverage-Air.com>

## Commercial Refrigeration Equipment General Specification

### DIRECT DRAW DISPENSERS

Direct Draw Beer Dispensers are available in 5 self-contained models up to 5 kegs capacity. Three models are available as club top (DD50C, DD58C, DD68C) for glasses, cans or bottles storage beneath an easy glide stainless steel lid. One size self-contained, end mount model (DD78E) and two remote models (DD58R and DD78R) complete the series of direct draws.

### CABINET CONSTRUCTION

Standard, cabinet exterior construction includes attractive, wear resistant vinyl on steel in black exterior finish. Top is made from heavy-duty stainless steel including drip tray(s) for easy cleaning.

Doors are self-closing and include key locks. Magnetic gaskets provide positive door sealing.

Standard interior construction utilizes galvanized steel walls and ceiling. Reinforced floor and door sills are made from heavy-duty stainless steel to provide long lasting service.

Foamed-in-place CFC and HCFC-free polyurethane insulation enhances the structural strength of the cabinet and helps increase energy efficiency.

Three-inch (3") insulated towers are provided. Towers are adapted to have a continuous source of cold air channeled into it to keep beer at its coldest, best quality the moment it is dispensed.

### REFRIGERATION

Models feature forced air refrigeration to keep beer in kegs ice cold for dispensing. Refrigeration system uses R134a refrigerant, which is CFC and HCFC-free for compliance with environmental safety concerns.

### ELECTRICAL

Units wired at factory and ready for connection to a 115/60/1 phase, 15 amp dedicated outlet. 8' long cord and plug set included.

### SPECIAL FEATURES

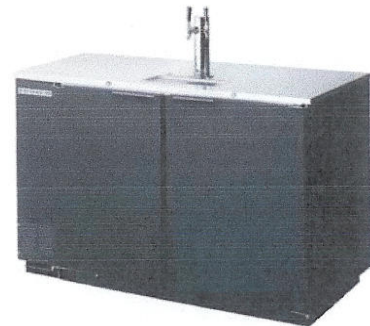
- Stainless options available
- 3 Club Top models available

Item No. \_\_\_\_\_

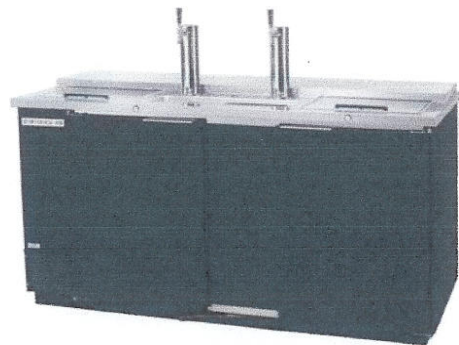
Quantity \_\_\_\_\_

## DRAFT BEER EQUIPMENT DIRECT DRAW DISPENSERS DD SERIES

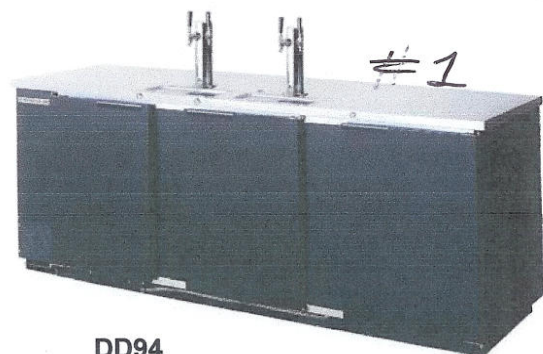
MODELS:  
DD50/DD50C  
DD58/DD58C/DD58R  
DD68/DD68C  
DD78/DD78E/DD78R  
DD94



DD50



DD68C



DD94

Available From:



\*Note: Not all markings may apply to all model variations.

Model Specified \_\_\_\_\_ Store# \_\_\_\_\_  
 Location \_\_\_\_\_ Quantity \_\_\_\_\_



**BEVERAGE-AIR**

**Direct Draw Dispensers**

Models: DD50, DD50C, DD58, DD58C, DD58R, DD68, DD68C, DD78, DD78E, DD78R, DD94

**ELECTRICAL CONNECTION**

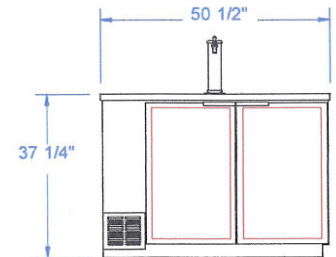
Units pre-wired at factory and include 8' long cord and plug set.



115/60/1  
NEMA-5-15P

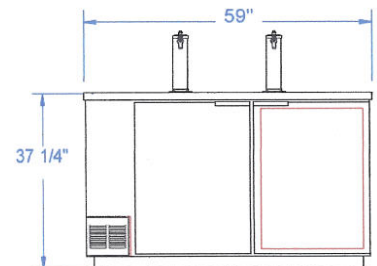
**PLAN VIEWS**

MODEL	DD50	DD50C	DD58	DD58C	DD58R	DD68	DD68C	DD78	DD78E	DD78R	DD94
<b>EXTERNAL DIMENSIONAL</b>											
Length Overall (inches)	50 1/2"	50 1/2"	59"	59"	59"	69"	69"	79"	92 1/2"	79"	95"
Length Overall (mm)	1283	1283	1499	1499	1499	1753	1753	2007	2350	2007	2413
Depth Overall (inches)	28 3/16"	28 3/16"	28 3/16"	28 3/16"	28 3/16"	28 3/16"	28 3/16"	28 3/16"	28 3/16"	28 3/16"	28 3/16"
Depth Overall (mm)	716	716	716	716	716	716	716	716	716	716	716
Height Overall—(inches)	37 1/4"	38 3/4"	37 1/4"	38 3/4"	37 1/4"	37 1/4"	38 3/4"	37 1/4"	37 1/4"	37 1/4"	37 1/4"
Height Overall—(mm)	946	984	946	984	946	946	984	946	946	946	946
Depth with door open (inches)	46 3/4"	46 3/4"	50 9/16"	50 9/16"	50 9/16"	50 9/16"	50 9/16"	50 9/16"	50 9/16"	50 9/16"	50 9/16"
Number of doors	2	2	2	2	2	2	2	3	3	3	3
<b>INTERNAL DIMENSIONAL</b>											
NET Capacity (cubic ft.)	19.8	19.8	23.8	23.8	23.8	28.4	28.4	34.2	34.2	34.2	39.7
NET Capacity (Liters)	561	561	674	674	674	804	804	968	968	968	1110
Internal Length Overall (inches)	46 1/2"	46 1/2"	55"	55"	55"	65"	65"	75"	75"	75"	91"
Internal Length Overall (mm)	1181	1181	1397	1397	1397	1651	1651	1905	1905	1905	2308
Internal Depth Overall (inches)	23"	23"	23"	23"	23"	23"	23"	23"	23"	23"	23"
Internal Depth Overall (mm)	584	584	584	584	584	584	584	584	584	584	584
Internal Height Overall (inches)	32"	32"	32"	32"	32"	32"	32"	32"	32"	32"	32"
Internal Height Overall (mm)	813	813	813	813	813	813	813	813	813	813	813
Number of Kegs (straight wall)	2	2	3	3	3	3	3	4	5	5	5
<b>ELECTRICAL DATA</b>											
Full Load Amperes 115/60/1	7.4	7.4	7.4	7.4	.5	7.4	7.4	7.4	7.4	.5	7.4
<b>ENERGY CONSUMPTION</b>											
	3.69	3.69	4.37	4.37	n/a*	3.55	3.55	4.02	4.02	n/a*	4.8
<b>REFRIGERATION DATA</b>											
Horsepower	1/3	1/3	1/3	1/3	remote	1/3	1/3	1/3	1/3	remote	1/3
<b>WEIGHT DATA</b>											
Gross Weight (Crated lbs)	314	330	343	368	298	370	414	417	420	386	458
Gross Weight (Crated kg)	142	150	156	167	135	168	188	189	191	175	208



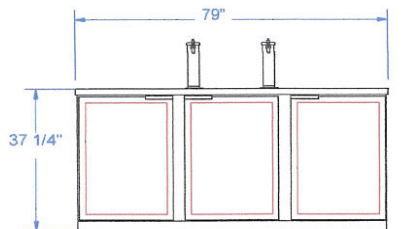
FRONT VIEW

**DD50**



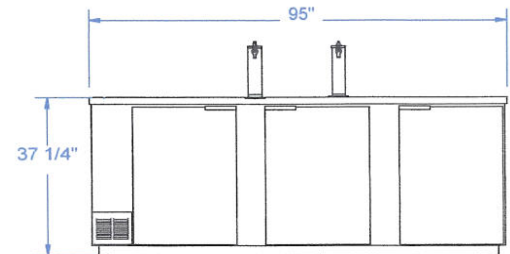
FRONT VIEW

**DD58**



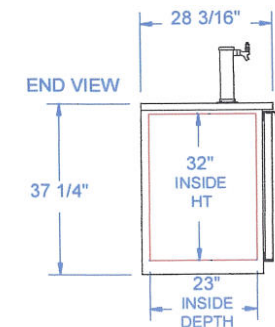
FRONT

**DD78**



FRONT

**DD94**

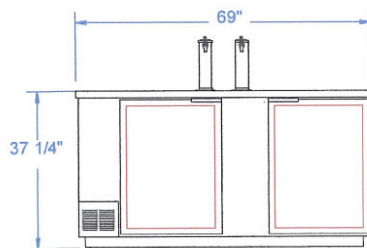


END VIEW

37 1/4"

23" INSIDE DEPTH

**COMMON END VIEW**



FRONT

**DD68**

**BEVERAGE-AIR® CORPORATION**

3779 Champion Blvd. • Winston-Salem, NC 27105 USA • (336) 245-6400 • Fax (336) 245-6453 • (888) 845-9800 • www.beverage-air.com

Specifications are subject to change without prior notice. 06/10



\*Note: Not all markings may apply to all model variations.  
 \*N/A: Not available at time of printing.

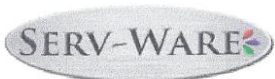
Item# \_\_\_\_\_  
Project: \_\_\_\_\_  
Qty: \_\_\_\_\_

## **3 Bowl Bar Sink Stainless Steel**



### **Features**

- 18 Gauge Top, Bowl and Back
- 20 Gauge Apron
- 8" Overflow Pipe, Available Accessory (OFP-8-CWP)
- 4" Wall Mount Faucet with a 12" Spout, Available Accessory (DTF4-12-CWP)



*Serv-Ware*  
[www.servware.com](http://www.servware.com)

Phone: (800).768.5953

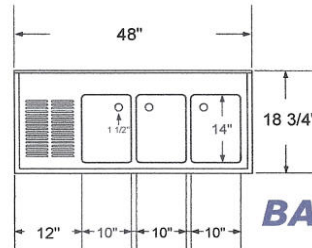
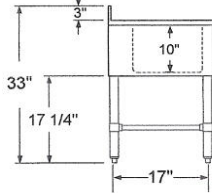
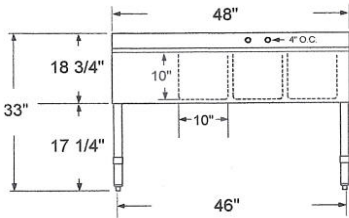
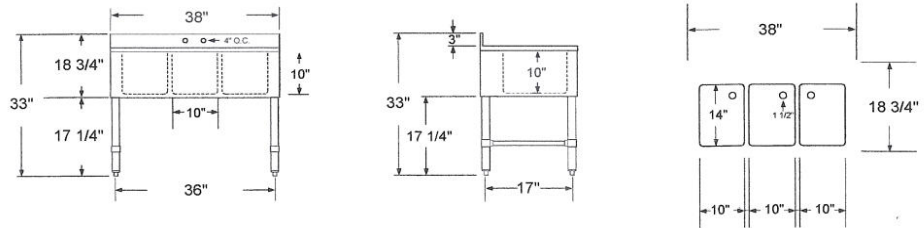
Fax: (800).976.1299

Revised 2/15



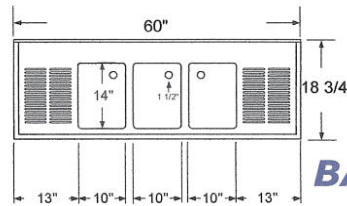
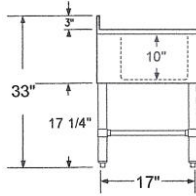
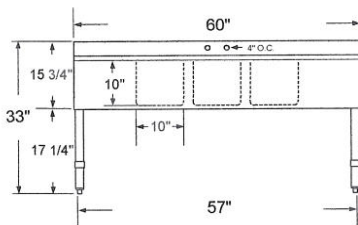
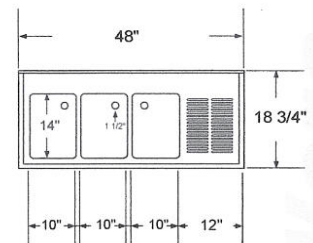
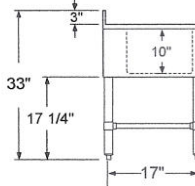
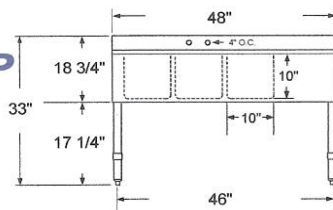
Item# \_\_\_\_\_  
 Project: \_\_\_\_\_  
 Qty: \_\_\_\_\_

**BAR3B38-CWP**



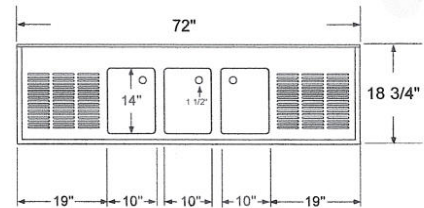
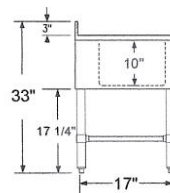
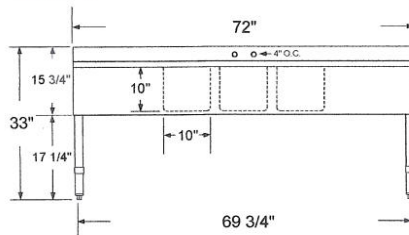
**BAR3B48-L-CWP**

**BAR3B48-R-CWP**



**BAR3B60-LR-CWP**

**BAR3B72-LR-CWP**



Model	Bowl Size (W x D x H)	Drain Boards	Size (W x D)	Weight / lbs. (Shipping)
BAR3B38-CWP	3) 14" x 10" x 10"	N/A	38" x 18 3/4"	60
BAR3B48-L-CWP	3) 14" x 10" x 10"	12" Left DB	48" x 18 3/4"	64
BAR3B48-R-CWP	3) 14" x 10" x 10"	12" Right DB	48" x 18 3/4"	64
BAR3B60-LR-CWP	3) 14" x 10" x 10"	2) 13" DB	60" x 18 3/4"	83
BAR3B72-LR-CWP	3) 14" x 10" x 10"	2) 19" DB	72" x 18 3/4"	95



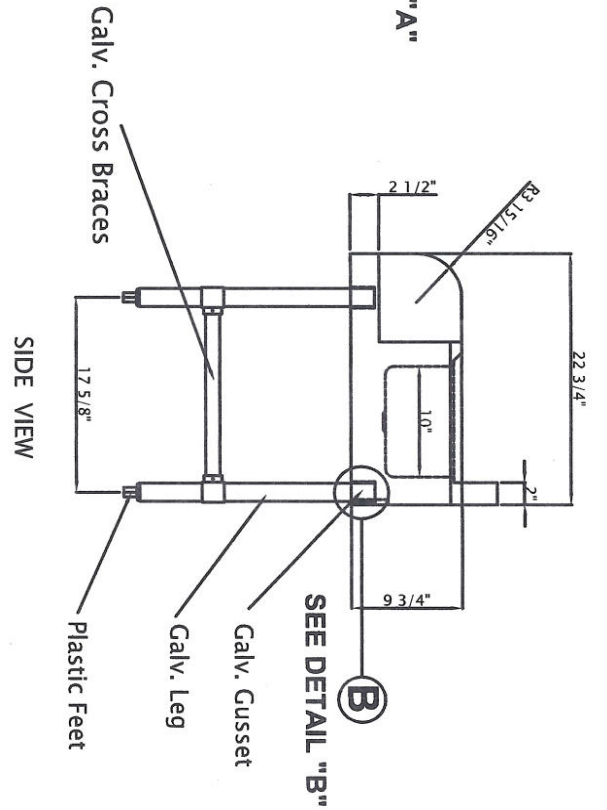
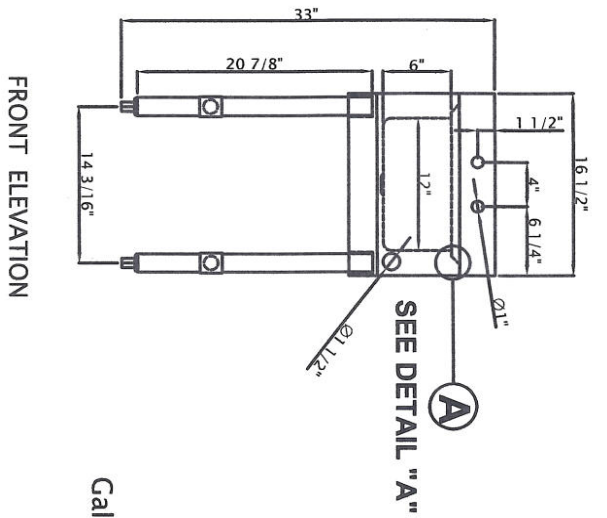
Serv-Ware  
[www.servware.com](http://www.servware.com)

Phone: (800).768.5953

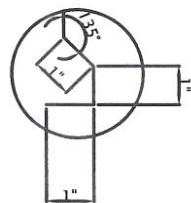
Fax: (800).976.1299

Revised 2/15

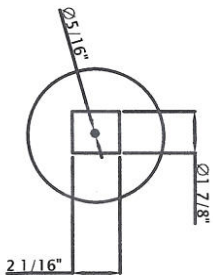
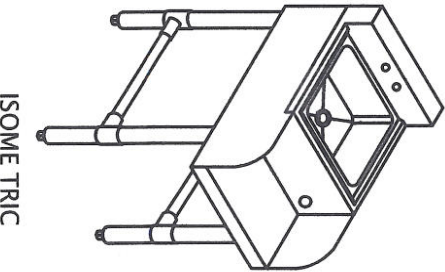
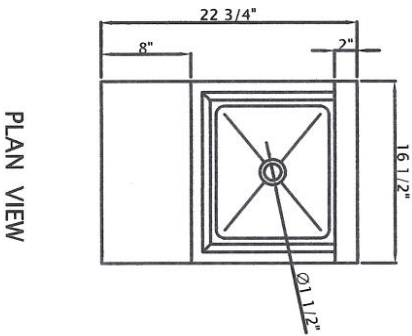




- 18 GA. 304 STAINLESS STEEL CONSTRUCTION.
- GALV. GUSSET AND GALV. LEG AND GALV. CROSS BRACES AND PLASTIC FEET



**DETAIL "A"**



**DETAIL "B"**

DRAWN FOR :		MATERIAL: TOP .18 GA. 304 S/S		DATE		REVISIONS	
REF. NO. :		REQ'D/ITEM :					
ITEM NAME : Blender Station		DATE : Dec/ 02/ 2011					
PROD. NO. : BS-1012		BY :					
SCALE: 1/2" = 1'-0"		CHECKED BY :					

**KLINGER'S TRADING**

Item# \_\_\_\_\_  
Project: \_\_\_\_\_  
Qty: \_\_\_\_\_

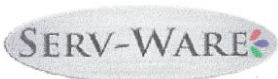
# Hand Sink



HS10-CWP Shown

## Features

- 304 Series Stainless Steel
- 18 Gauge Construction
- 7<sup>3</sup>/<sub>4</sub>" Backsplash
- 5" Deep Tub
- 4" Gooseneck Faucet with Wrist Blade Handles
- 1<sup>1</sup>/<sub>2</sub>" Basket Strainer and Mounting Bracket Included



Serv-Ware  
[www.servware.com](http://www.servware.com)

Phone: (800).768.5953

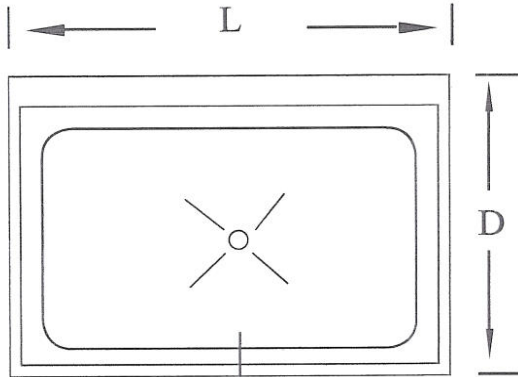
Fax: (800).976.1299

Revised 2/15

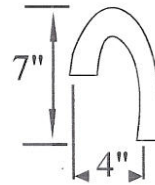
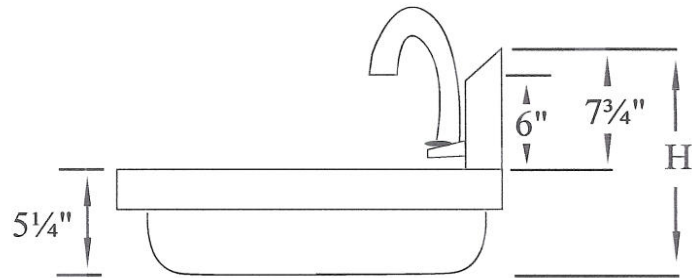


Item# \_\_\_\_\_  
 Project: \_\_\_\_\_  
 Qty: \_\_\_\_\_

# Hand Sink



Inside Bowl  
 14"L x 10"D



Serv-Ware

<b>Model</b>	<b>Bowl Size</b> (W x D x H)	<b>Size</b> (W x D x H)	<b>Weight/lbs</b> (Shipping)
HS10-CWP	9" x 9" x 5"	12" x 15.75" x 12.25"	10
HS15-CWP	13.75" x 10" x 5"	17" x 15.25" x 13.5"	15



Serv-Ware  
[www.servware.com](http://www.servware.com)

Phone: (800).768.5953

Fax: (800).976.1299

Revised 2/15



# TECHNICAL DATA

## Dimensions

Exterior Dimensions (WxDxH)	57.5" x 20.5" x 33.125"
Interior Dimensions Right Side (WxDxH)	18.5" x 15" x 28"
Interior Dimensions Left Side (WxDxH)	18.5" x 15" x 28"
Net Volume (cu. ft.)	9 cu. ft.
Net Weight	220 lbs
Packaging Dimensions (WxDxH)	60" x 23" x 39.5"

## Cooling

Temperature Range	32° - 50° F
Refrigerant	R134a
Maximum Ambient Temperature Rating	100.4° F
Defrosting	Automatic
Temperature Display	Yes
Temperature Controller	Digital
H/P	1/3

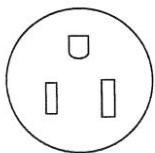
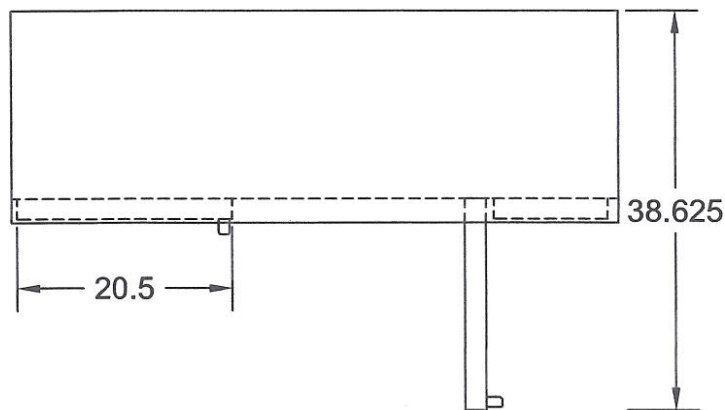
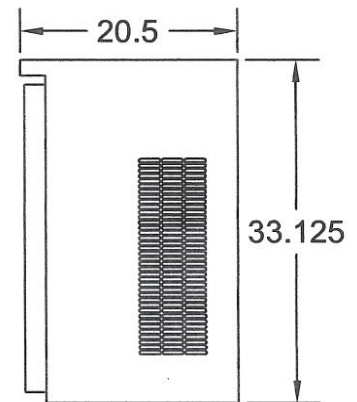
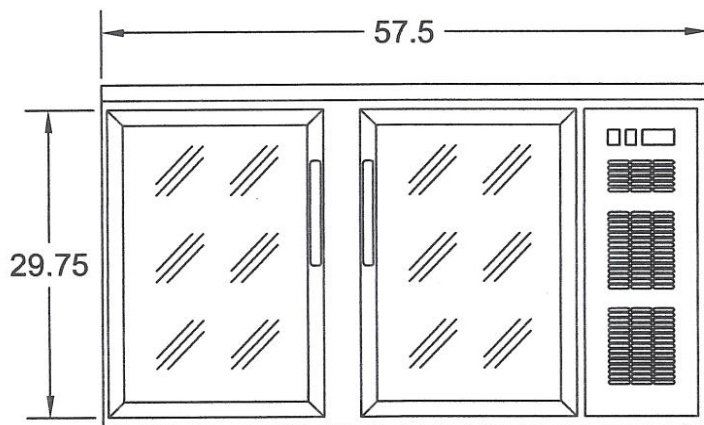
## Construction

Exterior Material	430 series stainless steel
Interior Material	304 series stainless steel
Insulation Material	Foamed in place polyurethane
Shelf Load Capacity	90 lbs

## Electrical

Voltage	110
Amps	2.6
Hz	60
Phase	1

## PLAN VIEW



NEMA 5-15