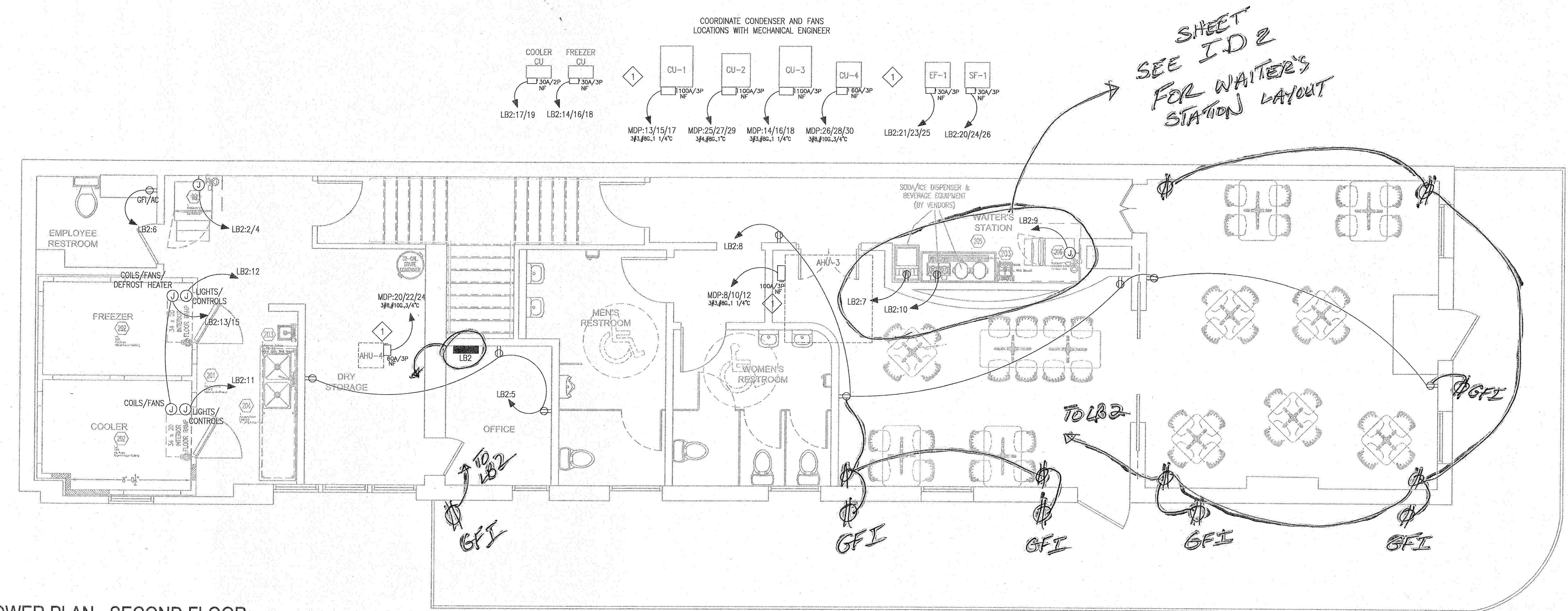


|     |            |
|-----|------------|
| BY: | REV. DATE: |
| TM  | 3/26/15    |
| TM  | 4/1/15     |
| TM  | 6/19/15    |

**CANZONERI & ASSOCIATES, L.L.C.**  
 ELECTRICAL ENGINEERING  
 5001 BIRCHWOOD DRIVE  
 SUITE 100  
 METairie, LA 70002  
 Phone: (504) 888-0074  
 Fax: (504) 888-0074  
 Down By: MR. ...  
 Checked By: LM  
 Job Name: ... 301 ROYAL STREET

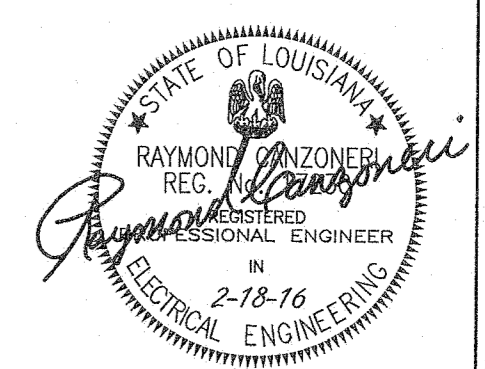


POWER PLAN - SECOND FLOOR  
 SCALE: 1/4" = 1'-0"

| Item No. | Qty | Equipment Description      | Manufacturer   | Model Number                       | Amps | KW  | HP  | Volts | Phase | Cycle | Harmonics Conn. Coords/Plug | NECA Plug No. | Electrical A.C.F. (in) | File Remarks                   |
|----------|-----|----------------------------|----------------|------------------------------------|------|-----|-----|-------|-------|-------|-----------------------------|---------------|------------------------|--------------------------------|
| 201      | 1   | Walkin Cooler/Freezer      | American Panel | Cooler Condensing Unit             | 12.7 | 1.0 | 208 | 1     | 60    | X     | -                           | -             | -                      | ROOF (E201); See Shop Drawings |
| -        | -   | -                          | -              | Cooler Coils/Fans                  | 0.9  | -   | 208 | 1     | 60    | X     | -                           | -             | -                      | DFA (E201); See Shop Drawings  |
| -        | -   | -                          | -              | Cooler Lights/Controls             | 10.0 | -   | 120 | 1     | 60    | X     | -                           | -             | -                      | DFA (E201); See Shop Drawings  |
| -        | -   | -                          | -              | Freezer Condensing Unit            | 11.8 | 2.0 | 208 | 3     | 60    | X     | -                           | -             | -                      | ROOF (E201); See Shop Drawings |
| -        | -   | -                          | -              | Freezer Coils/Fans/Defrost Heaters | 8.7  | -   | 208 | 1     | 60    | X     | -                           | -             | -                      | DFA (E201); See Shop Drawings  |
| -        | -   | -                          | -              | Freezer Lights/Controls            | 10.0 | -   | 120 | 1     | 60    | X     | -                           | -             | -                      | DFA (E201); See Shop Drawings  |
| 202      | Lot | Cooler/Freezer Shelving    | TBD            | Per Space                          | -    | -   | -   | -     | -     | -     | -                           | -             | -                      | -                              |
| 203      | 2   | Hand Sink, Wall Mount      | Advance Tabco  | 7-PS-22                            | -    | -   | -   | -     | -     | -     | -                           | -             | -                      | -                              |
| 204      | 1   | 9' x 30" S/S Prep Table    | Advance Tabco  | KMS-309                            | -    | -   | -   | -     | -     | -     | -                           | -             | -                      | -                              |
| 205      | 1   | 24" x 60" Beverage Counter | Custom         | Custom                             | -    | -   | -   | -     | -     | -     | -                           | -             | -                      | -                              |
| 206      | 1   | Ice Maker / Bin            | Monitowoc Ice  | ID-0322A / B-420                   | 11.8 | -   | 120 | 1     | 60    | X     | -                           | -             | 60                     | (E206)                         |

SPECIFIC NOTES:  
 1 A 125VAC, 15- OR 20 AMPERE RATED RECEPTACLE TO BE LOCATED WITHIN 25' OF HVAC EQUIPMENT AT SAME LEVEL FOR MAINTENANCE PURPOSES AS PER NEC 2011.

ALL STAR ELECTRIC  
 PROJECT RECORD  
 12/17



PROJECT:

PROPOSED RENOVATIONS TO 301 ROYAL ST.  
 CREOLE CUISINE RESTAURANT CONCEPTS

Moynan Consulting, LLC  
 Foodservice Facility Design & Planning  
 101 Kramer Ct. Mandeville, Louisiana 70471  
 Phone/FAX: (985) 674-5710  
 Cell: (985) 264-6121  
 www.moynanconsulting.com

DATE: 3/23/15  
 SCALE: AS NOTED  
 SHEET: E4