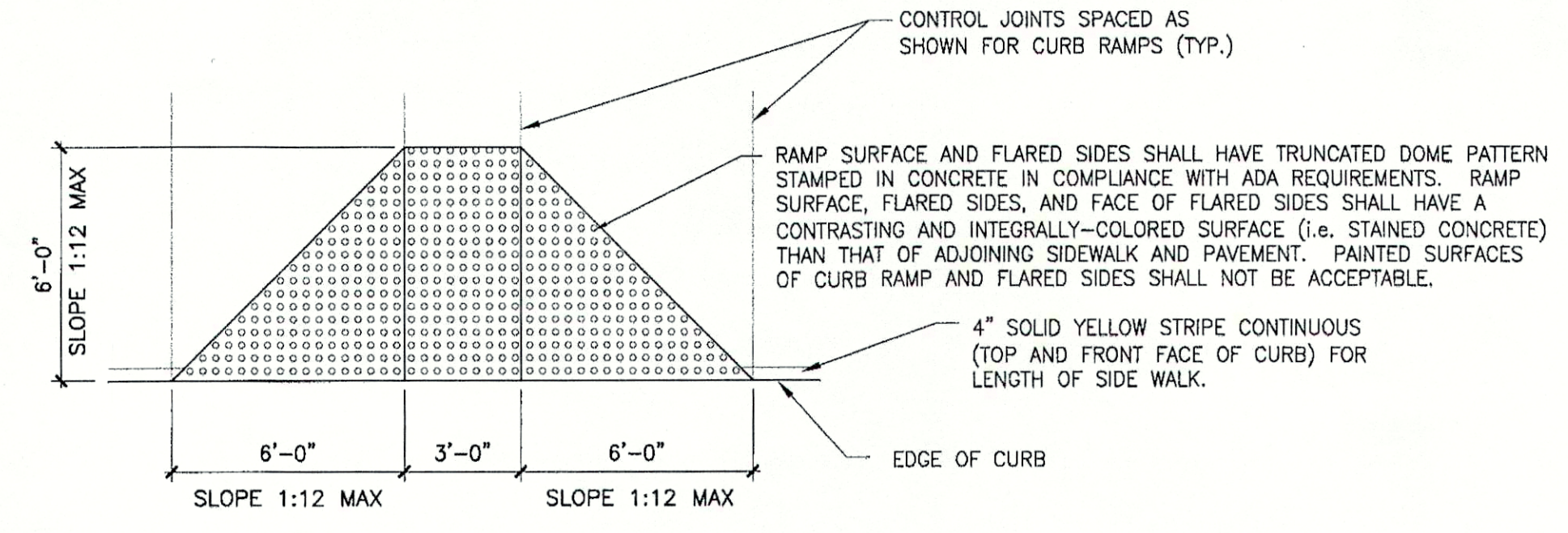
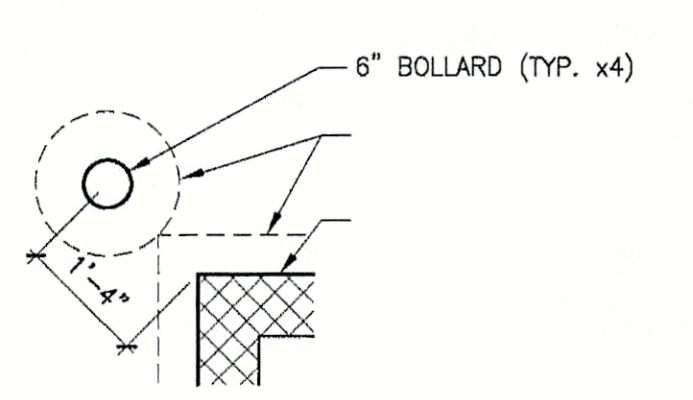


**1 ARCHITECTURAL SITE PLAN**  
1/16" = 1'-0"



**2 DETAIL**  
1/4" = 1'-0"



**3 DETAIL**  
1/2" = 1'-0"

SLAB BLOCK OUT FOR FUTURE ROUGH-IN'S AT TENANTS "A", "G", AND "M". FUTURE SLAB PROVIDED BY LANDLORD'S GENERAL CONTRACTOR. CONTRACTOR IS TO VERIFY UNDER-SLAB REQUIREMENTS WITH ARCHITECT AND DEVELOPER PRIOR TO LAYING SLAB.

**5 GENERAL NOTES**

1. PROVIDE 16 SLOT U.S. POSTAL SERVICE APPROVED OUTDOOR CENTRALIZED MAIL DELIVERY SYSTEM. SEE CIVIL PLANS FOR LOCATION. AMERICAN POSTAL MFG. (877) 244-5618. MODEL # N1004638 ALUMINUM

**6 SPECIFIC NOTES**

1. CONTRACTOR TO SLOPE PAVEMENT TO CREATE 6" CURB IN 10' (SEE CIVIL).
2. CONTRACTOR TO PROVIDE INDUSTRY STANDARD TRASH RECEPTACLE IN LOCATION SHOWN.

DATE	REVISION	BY
3/4/08	LMR	
9/17/07	LMR	

**DDG DUPLANTIS**  
DESIGN GROUP, PC  
Respect • Integrity • Client Satisfaction • Excellence  
THIBODAUX MANDEVILLE HOUSTON  
Civil Engineering • Site Development • Land Planning • Architecture  
314 East Bayou Road  
Thibodaux, Louisiana 70301  
Phone: 985-447-0099  
Fax: 985-447-0093

STAMP  
STATE OF LOUISIANA  
REGISTERED PROFESSIONAL ARCHITECT  
NO. 10000  
DATE: 3/15/08

PROPOSED RETAIL DEVELOPMENT  
CITY OF BOULTE  
ST. CHARLES PARISH, LOUISIANA  
FOR THE SPECTRA GROUP, INC.  
MEMPHIS, TENNESSEE

DRAWN LMR  
CHECKED SMV  
DATE 8/13/07  
SCALE AS NOTED ON DWG  
PROJECT NO. 07-205A  
FILE: REVISION 3\SW1-LDWG  
SHEET  
**SW1.1**