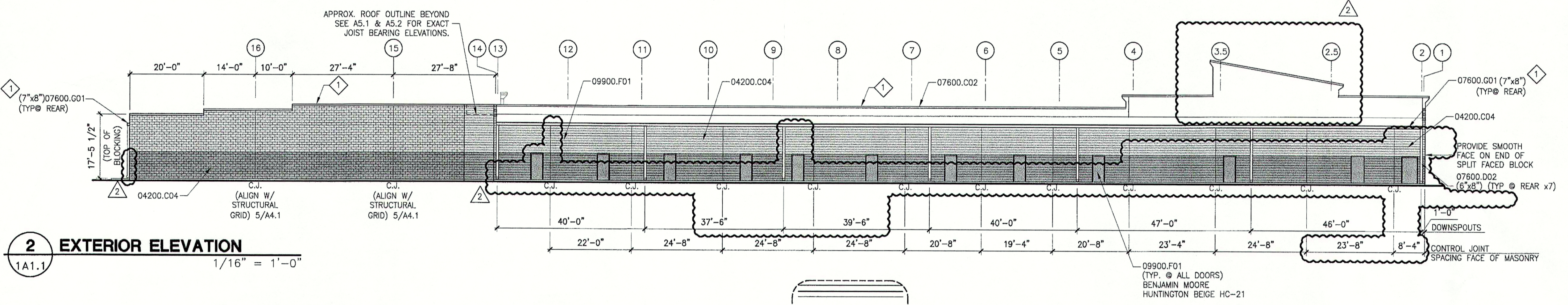
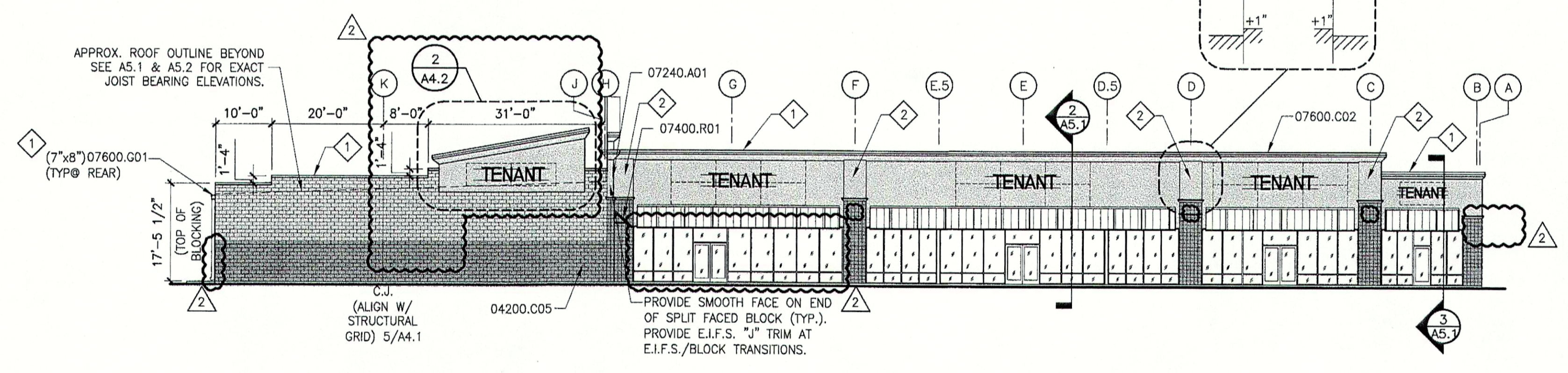


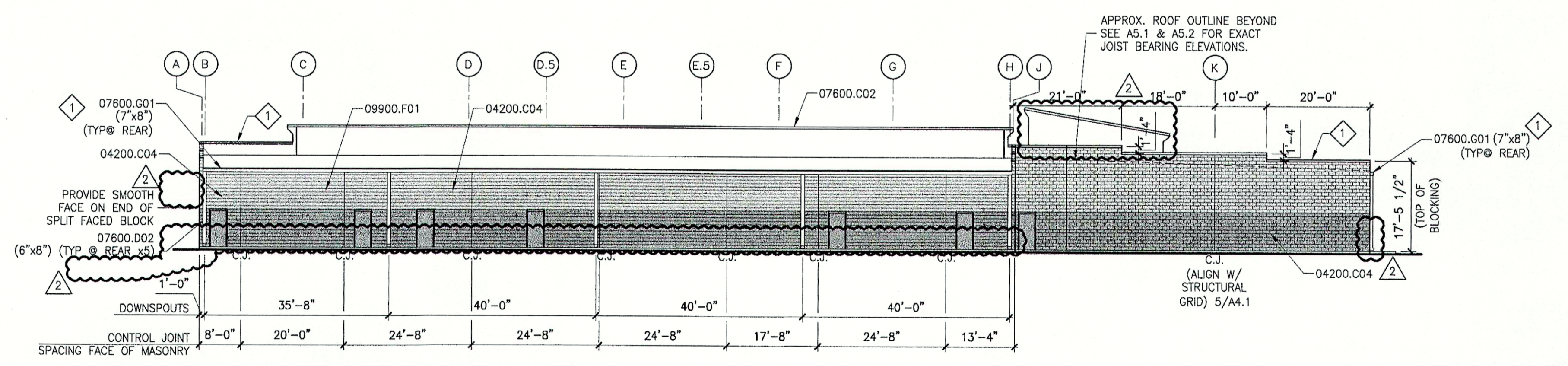
1 EXTERIOR ELEVATION
1A1.1 1/16" = 1'-0"



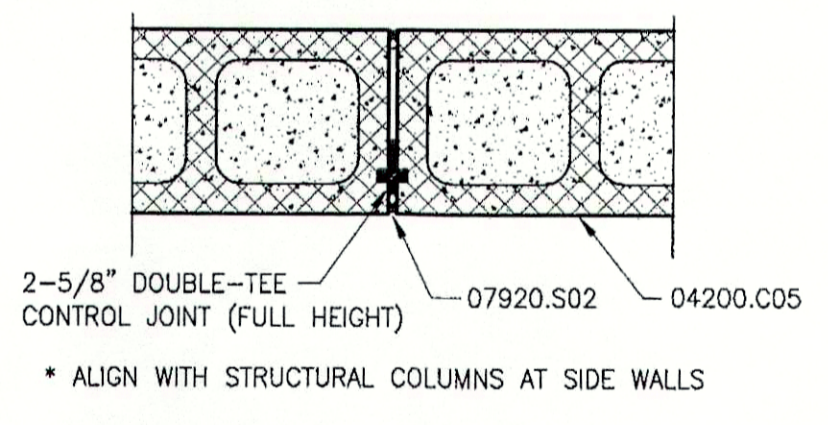
2 EXTERIOR ELEVATION
1A1.1 1/16" = 1'-0"



3 EXTERIOR ELEVATION
1A1.1 1/16" = 1'-0"



4 EXTERIOR ELEVATION
1A1.1 1/16" = 1'-0"



5 DETAIL
1A4.1 CMU CONTROL JOINT 1-1/2" = 1'-0"

6 GENERAL NOTES

1. PAINT ALL EXPOSED MATERIALS INCLUDING BUT NOT LIMITED TO GAS PIPING, COPPER PIPING, CONDUIT, UNISTRUT, MISC. SUPPORTS, ETC.

7 KEYNOTES

04200.C04	8 x 8 x 16 C.M.U., SMOOTH FACED, RUNNING BOND
04200.C05	8 x 8 x 16 C.M.U., SPLIT FACED, RUNNING BOND
07240.A01	E.I.F.S. OVER INSULATION BOARD, SEE DETAILS
07240.A02	E.I.F.S. ACCENT BAND
07400.R01	24 GA. PREFIN. METAL STANDING SEAM ROOF
07600.C02	24 GA. PREFIN. METAL COPING
07600.D02	24 GA. PREFIN. METAL DOWNSPOUT
07600.G01	24 GA. PREFIN. MTL. GUTTER
07920.S02	FLEXIBLE SEALANT W/ BACKER ROD
09900.F01	PAINT WITH EXTERIOR PAINT MATERIAL

8 PAINT SCHEDULE

	BENJAMIN MOORE GRANT BEIGE HC-83
	BENJAMIN MOORE HUNTINGTON BEIGE HC-21
	FABRAL BONE WHITE
	METAL AWNING FABRAL - HEMLOCK GREEN

9 SPECIFIC NOTES

- 1 EXPOSED FASTENERS WILL ONLY BE ALLOWED WITH PRIOR APPROVAL OF OWNER (TYP. @ ALL FLASHING).
- 2 ONE INCH PROJECTION AT LOCATIONS NOTED.
- 3 SCORE JOINT AT LOCATIONS NOTED.

REV #	DATE	DESCRIPTION	BY
3/14/08			LMR
9/17/07			LMR

DDG DUPLANTIS DESIGN GROUP, PC
Respect • Integrity • Client Satisfaction • Excellence

THIBODAUX, LOUISIANA
MANDEVILLE, LOUISIANA
HOUSTON, TEXAS

Civil Engineering • Site Development • Land Planning • Public Works • Architecture
Phone: 985-447-0000
Fax: 985-447-0000

STAMP

STATE OF LOUISIANA
REGISTERED PROFESSIONAL ARCHITECT
NO. 51515
JAMES M. GIBBIE

SIGNATURE:

DATE: 3/5/08

PROPOSED RETAIL DEVELOPMENT
CITY OF BOULTE
ST. CHARLES PARISH, LOUISIANA
FOR THE SPECTRA GROUP, INC.
MEMPHIS, TENNESSEE

DRAWN	LMR
CHECKED	SMV
DATE	8/13/07
SCALE	AS NOTED ON DWG
PROJECT NO.	07-205A
FILE	
REVISION	3/A4-LDWG
SHEET	

A4.1