

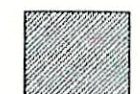



**6 GENERAL NOTES**

1. PAINT ALL EXPOSED MATERIALS INCLUDING BUT NOT LIMITED TO GAS PIPING, COPPER PIPING, CONDUIT, UNISTRUT, MISC. SUPPORTS, ETC.

**7 KEYNOTES**

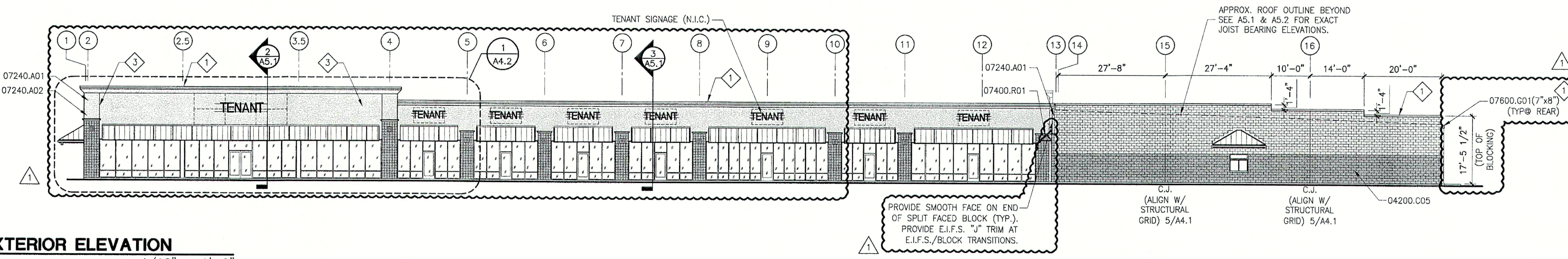
- 04200.C04 8 x 8 x 16 C.M.U., SMOOTH FACED, RUNNING BOND
- 04200.C05 8 x 8 x 16 C.M.U., SPLIT FACED, RUNNING BOND
- 07240.A01 E.I.F.S. OVER INSULATION BOARD, SEE DETAILS
- 07240.A02 E.I.F.S. ACCENT BAND
- 07400.R01 24 GA. PREFIN. METAL STANDING SEAM ROOF
- 07600.C02 24 GA. PREFIN. METAL COPING
- 07600.D02 24 GAUGE PREFIN. METAL DOWNSPOUT
- 07600.G01 24 GA. PREFIN. MTL. GUTTER
- 07920.S02 FLEXIBLE SEALANT W/ BACKER ROD
- 09900.F01 PAINT WITH EXTERIOR PAINT MATERIAL

**8 PAINT SCHEDULE**

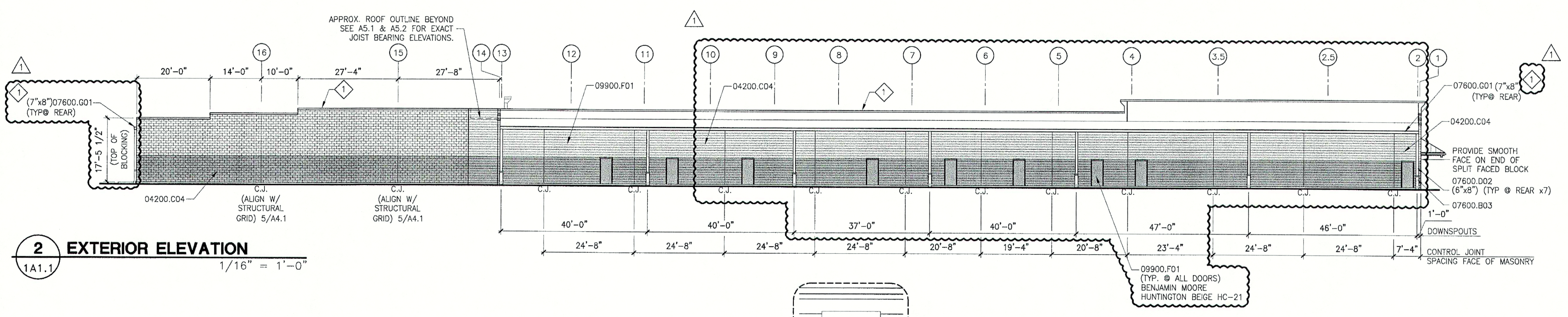
-  BENJAMIN MOORE GRANT BEIGE HC-83
-  BENJAMIN MOORE HUNTINGTON BEIGE HC-21
-  FABRAL BONE WHITE
-  METAL AWNING FABRAL - HEMLOCK GREEN

**9 SPECIFIC NOTES**

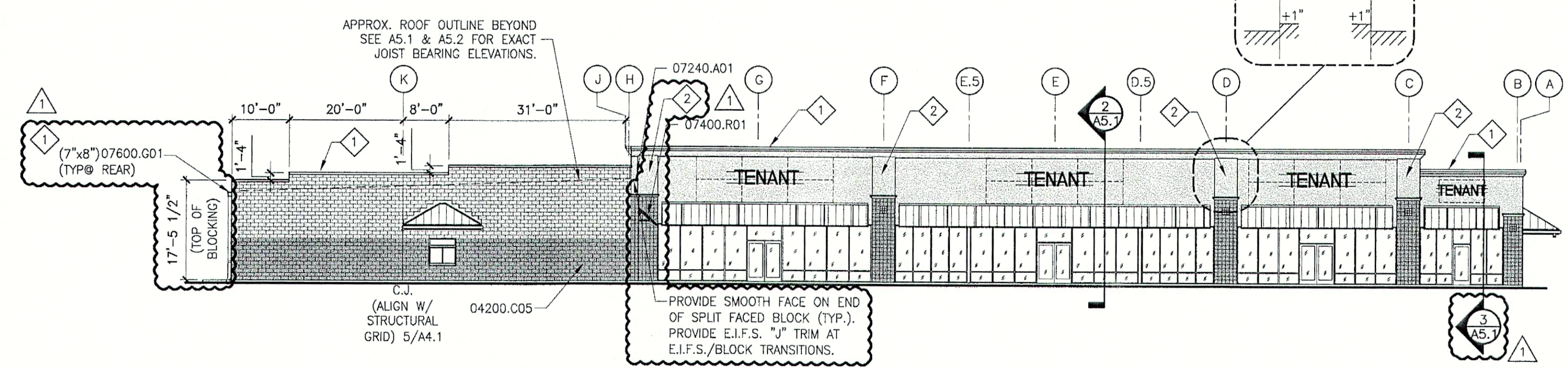
- 1 EXPOSED FASTENERS WILL ONLY BE ALLOWED WITH PRIOR APPROVAL OF OWNER (TYP. @ ALL FLASHING).
- 2 ONE INCH PROJECTION AT LOCATIONS NOTED.
- 3 SCORE JOINT AT LOCATIONS NOTED.



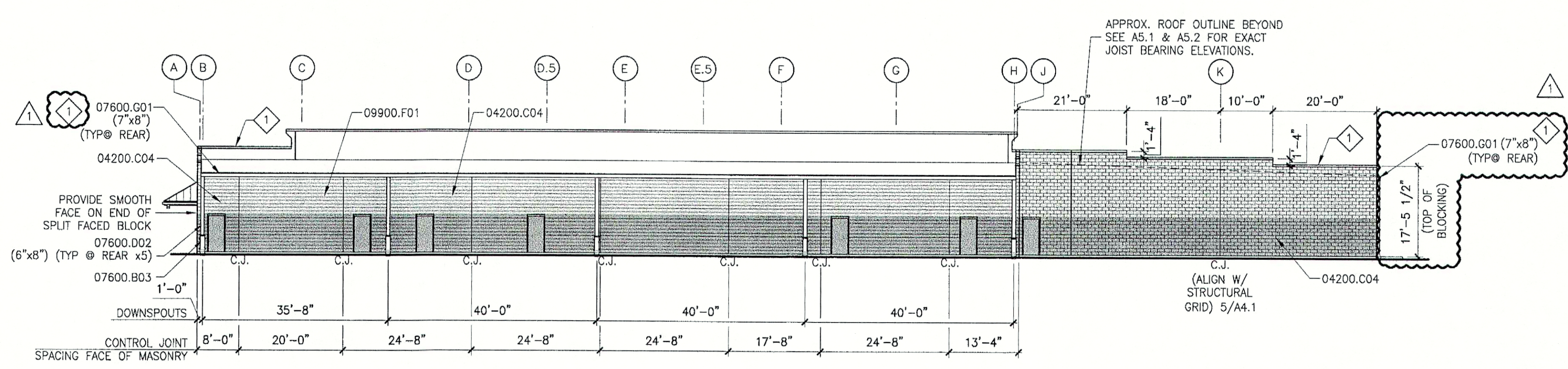
**1 EXTERIOR ELEVATION**  
1A1.1 1/16" = 1'-0"



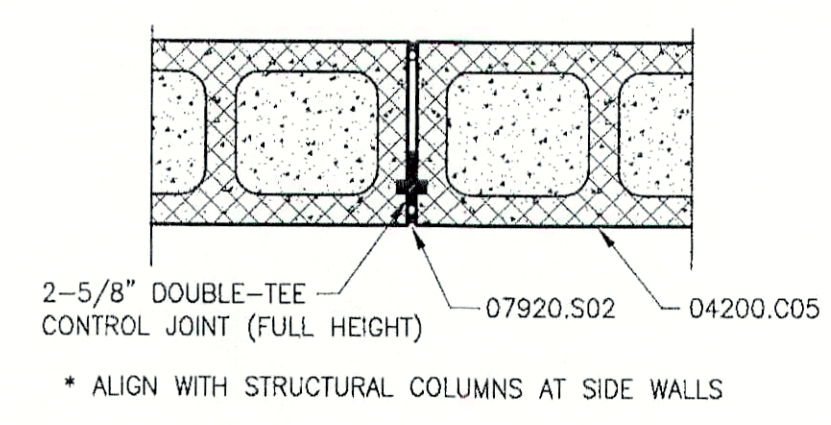
**2 EXTERIOR ELEVATION**  
1A1.1 1/16" = 1'-0"



**3 EXTERIOR ELEVATION**  
1A1.1 1/16" = 1'-0"



**4 EXTERIOR ELEVATION**  
1A1.1 1/16" = 1'-0"



**5 DETAIL**  
1A4.1 CMU CONTROL JOINT 1-1/2" = 1'-0"

DATE	DESCRIPTION	REV #	LMR	BY
9/17/07				

**DDG DUPLANTIS DESIGN GROUP, PC**  
 Respect • Integrity • Client Satisfaction • Excellence  
 THIBODAUX, LOUISIANA  
 Civil Engineering & Site Development • Land Planning • Public Works Architecture  
 314 East Bayou Road  
 Thibodaux, Louisiana 70301  
 Phone: 985.447.0090  
 Fax: 985.447.7039

Stamp: **REGISTERED PROFESSIONAL ARCHITECT**  
 STATE OF MISSISSIPPI  
 No. 5133  
 Signature: [Signature]  
 Date: 1/17/07

**PROPOSED RETAIL DEVELOPMENT**  
 CITY OF BOUTTE  
 ST. CHARLES PARISH, LOUISIANA  
 FOR THE SPECTRA GROUP, INC.  
 MEMPHIS, TENNESSEE

DRAWN	LMR
CHECKED	SMV
DATE	8/13/07
SCALE	AS NOTED ON DWG
PROJECT NO.	07-205A
FILE:	REVISION 1A4.1-DWG
SHEET	

**A4.1**