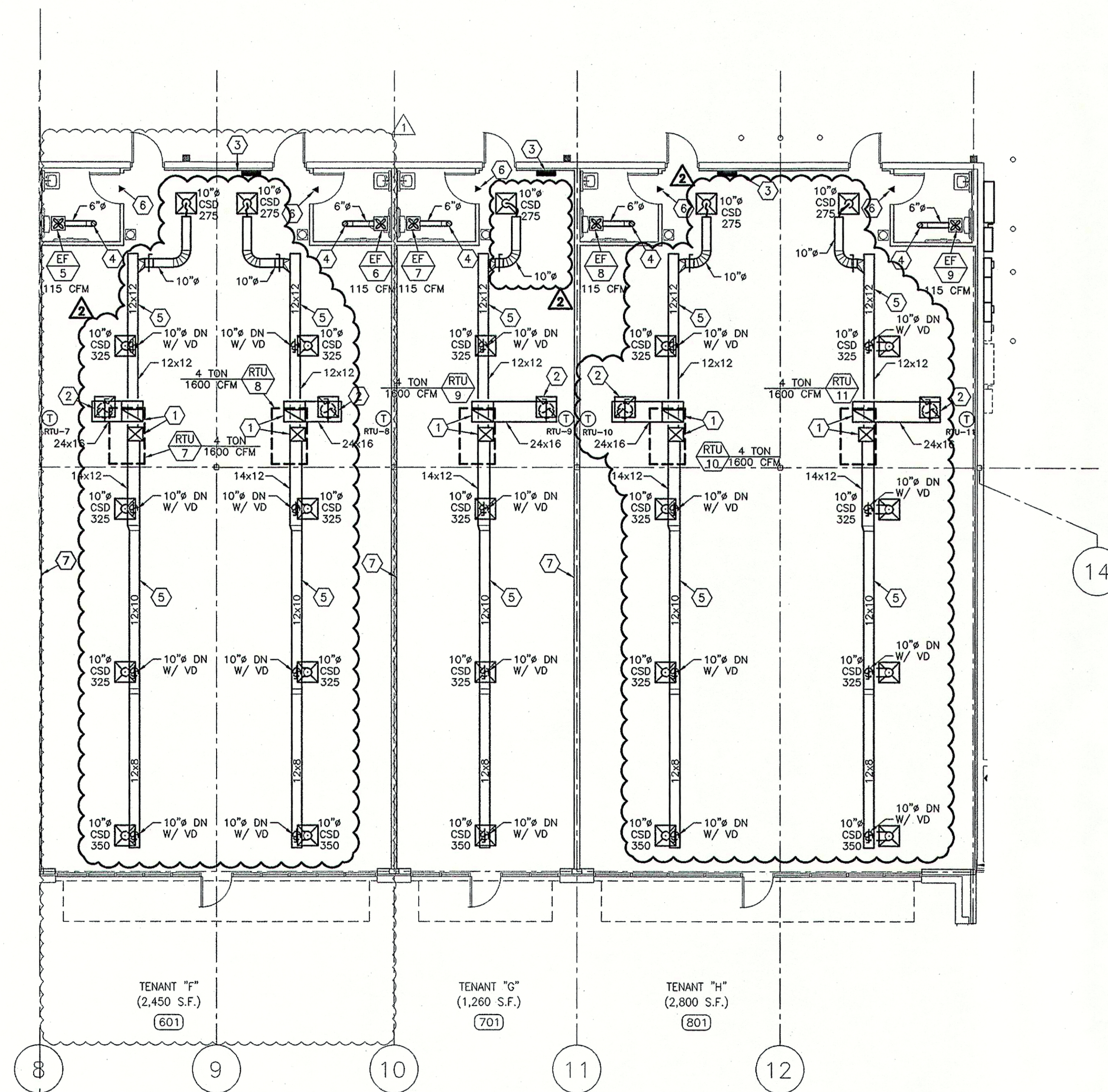


**HVAC PLAN NOTES:**

- 1 ROUTE SUPPLY AND RETURN AIR DUCT UP AND TRANSITION TO FULL-SIZE CONNECTION AT ROOFTOP UNIT. INSTALL SMOKE DETECTOR(S) IN MAIN PLENUM DUCT(S) DOWN FROM UNIT.
- 2 ROUTE RETURN AIR DUCT DOWN TO 22x22 CRG(S) WITH 18" DUCT CONNECTION AND DAMPER AT EACH GRILLE.
- 3 DO NOT ROUTE DUCTWORK OVER TOP OF ELECTRICAL PANEL.
- 4 ROUTE 6" RESTROOM EXHAUST DUCT UP THROUGH ROOF TO ROOF CAP. FLASH AND SEAL ROOF PENETRATION WEATHERTIGHT.
- 5 COORDINATE INSTALLATION OF DUCTWORK ROUTING WITH ROOF STRUCTURE AND PLUMBING PIPING.
- 6 GENERAL CONTRACTOR SHALL PROVIDE 1" DOOR UNDERCUT FOR VENTILATION TRANSFER PATH THROUGH ROOM. RE: ARCHITECTURAL DOOR SCHEDULE.
- 7 DO NOT PENETRATE FULL-HEIGHT SEPARATION WALL BETWEEN TENANTS WITH DUCTWORK.



**1 HVAC FLOOR PLAN**  
SCALE: 1/8"=1'-0"

**NOTE TO CONTRACTOR:**

CONTRACTOR SHALL PERFORM TEST READINGS ON FANS, UNITS, COILS, ETC. AND ADJUST EQUIPMENT TO DELIVER SPECIFIED AMOUNTS OF AIR. AIR SHALL BE BALANCED TO WITHIN PLUS/MINUS 10% OF DESIGN REQUIREMENTS. ADJUST AIR DEVICES TO SUPPLY THE AMOUNT OF AIR SHOWN ON THE DRAWINGS. FURTHER ADJUSTMENTS SHALL BE MADE TO OBTAIN UNIFORM TEMPERATURE IN SPACES. REFER TO SPECIFICATIONS FOR ADDITIONAL REQUIREMENTS.

CRM	REVISION #1	REVISION #2	REVISION #3	DATE	DESCRIPTION	BY
	1			8/13/07		
	2			3/04/08		

**DDG DUPLANTIS DESIGN GROUP, PC**  
*Respect. Integrity. Client Satisfaction. Excellence.*  
 THIBODAUX, LOUISIANA  
 314 East Bayou Road  
 Thibodaux, Louisiana 70081  
 Phone: 985.447.0090  
 Fax: 985.447.7009

SIGNATURE: \_\_\_\_\_ DATE: \_\_\_\_\_

STAMP:

PROPOSED RETAIL DEVELOPMENT  
 CITY OF BOUTTE  
 ST. CHARLES PARISH, LOUISIANA  
 FOR THE SPECTRA GROUP, INC.  
 MEMPHIS, TENNESSEE

**HENDERSON ENGINEERS**  
 8325 LENEVA DRIVE  
 LENOX, KS 66214  
 TEL 913 742 5000 FAX 913 742 5001  
 www.hel-eng.com  
 0750001106

DRAWN: KLB  
 CHECKED: KLB  
 DATE: 8/13/07  
 SCALE: AS NOTED ON DWG  
 PROJECT NO. 0750001106  
 FILE: 0750001106M2.DWG  
 SHEET: M2