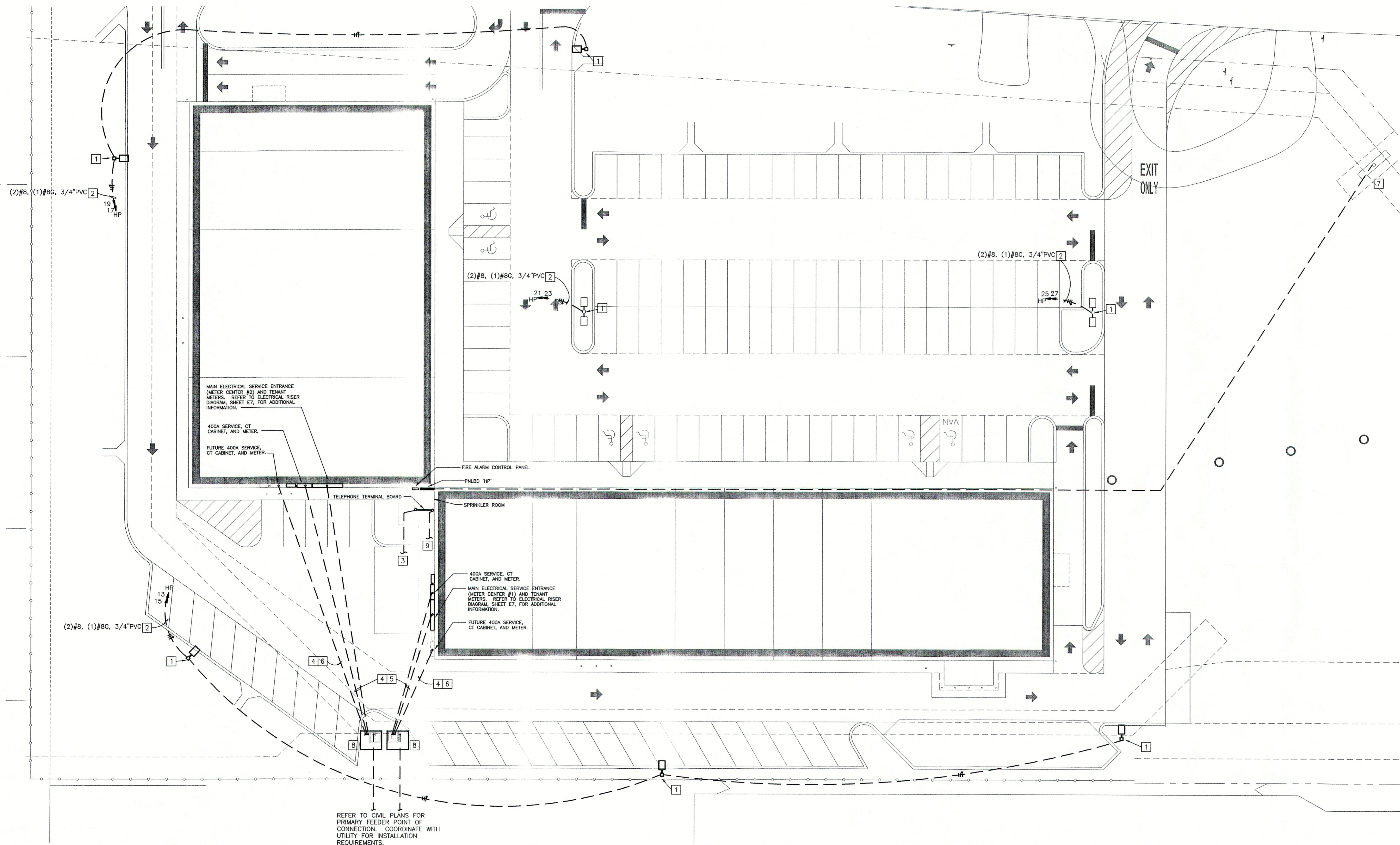


GENERAL NOTES:

1. LOCATIONS OF EXISTING UTILITIES SHOWN ON THIS PLAN HAVE BEEN OBTAINED FROM PROJECT CIVIL ENGINEER. VERIFY LOCATIONS OF EXISTING UTILITY LINES BEFORE PERFORMING WORK. NOTIFY DEVELOPER IMMEDIATELY OF ANY DISCREPANCIES.
2. COORDINATE WITH CIVIL AND PHOTOMETRIC PLANS FOR EXACT LOCATION OF LIGHT POLES.
3. SITE LIGHTING BRANCH CIRCUIT SIZES BASED ON VOLTAGE DROP CALCULATIONS.

PLAN NOTES:

- 1 PROVIDE SITE LIGHTING AS SPECIFIED ON PHOTOMETRIC PLANS IN THE CIVIL SET OF DRAWINGS. COORDINATE WITH ARCHITECT. REFER TO CIVIL DRAWINGS FOR POLE-BASE DETAIL. CONCRETE POLE BASE SHALL EXTEND 3'-0" ABOVE FINISHED GRADE.
- 2 HOMERUN CIRCUIT THRU CONTACTOR CONTROLLED BY PHOTOCELL AND TIME SWITCH. REFER TO CONTACTOR SCHEDULE FOR CONTROL SEQUENCE.
- 3 TELEPHONE SERVICE CONDUIT. REFER TO SHEET E6 FOR ADDITIONAL INFORMATION.
- 4 EXTEND CONDUIT TO LOCATION OF PAD MOUNTED UTILITY TRANSFORMER. PROVIDE WARNING TAPE. COORDINATE LOCATION WITH CIVIL. COORDINATE INSTALLATION OF BELOW GRADE CONDUIT WITH BELOW GRADE STORM, DOMESTIC WATER, AND/OR FIRE PROTECTION PIPING. VERIFY INSTALLATION REQUIREMENTS WITH LOCAL ELECTRIC UTILITY COMPANY PRIOR TO ROUGH-IN.
- 5 REFERENCE RISER DIAGRAM, SHEET E7, FOR SERVICE ENTRANCE CONDUCTOR SIZES.
- 6 (2) 2" PVC CONDUIT WITH PULLWIRE STUBBED 6" ABOVE GRADE AND CAPPED AT LOCATION OF FUTURE 400 AMP CT CABINET, DISCONNECT SWITCH AND METER. PROVIDE WARNING TAPE. REFER TO RISER DIAGRAM, SHEET E7, FOR ADDITIONAL INFORMATION.
- 7 PROVIDE (1) 2" CONDUIT WITH PULLWIRE FROM SPRINKLER ROOM TO EXTERIOR, IN-GRADE PULLBOX FOR FUTURE MONUMENT/PYLON SIGN LOCATION. REFER TO CIVIL PLANS FOR EXACT SIGN AND PULL BOX LOCATIONS. STUB CONDUIT UP 6" A.F.F. IN SPRINKLER ROOM AND CAP.
- 8 APPROXIMATE LOCATION OF PAD MOUNTED UTILITY TRANSFORMERS. VERIFY EXACT LOCATION WITH CIVIL PLANS. COORDINATE INSTALLATION REQUIREMENTS WITH LOCAL UTILITY COMPANY.
- 9 CCTV SERVICE CONDUIT. REFER TO SHEET E6 FOR ADDITIONAL INFORMATION.



REFER TO CIVIL PLANS FOR PRIMARY FEEDER POINT OF CONNECTION. COORDINATE WITH UTILITY FOR INSTALLATION REQUIREMENTS.

1 SITE ELECTRICAL PLAN
SCALE: 1"=20'-0"

HENDERSON ENGINEERS
8325 LENOVA DRIVE
LENOVA, KS 66214
TEL 913 742 5000 FAX 913 742 5001
www.hel-eng.com
0750001106

DATE	DESCRIPTION	BY

DDG DUPLANTIS
DDG DESIGN GROUP, PC
Respect. Integrity. Client Satisfaction. Excellence
THIBODAUX, LOUISIANA
MANDERVILLE, LOUISIANA
Civil Engineering • Site Development • Land Planning • Public Works • Architecture
314 East Bayou Road
Thibodaux, Louisiana 70301
Phone: 985-447-0099
Fax: 985-447-7059

SIGNATURE: _____ DATE: _____
STAMP: STATE OF LOUISIANA
CRISTO R. LABRINE
REG. No. 25228
PROFESSIONAL ENGINEER
ELECTRICAL ENGINEERING
8/7/07

PROPOSED RETAIL DEVELOPMENT
CITY OF BOULTE
ST. CHARLES PARISH, LOUISIANA
FOR THE SPECTRA GROUP, INC.
MEMPHIS, TENNESSEE

DRAWN: **FLB**
CHECKED: **DWL**
DATE: **8/19/07**
SCALE: **AS NOTED ON DWG**
PROJECT NO.: **0750001106**
FILE: **0750001106SELDWG**
SHEET: **SE1**