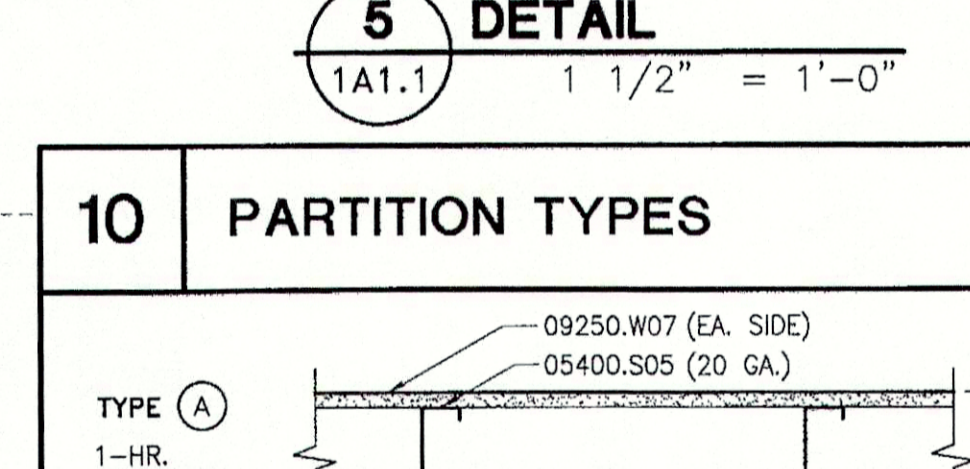
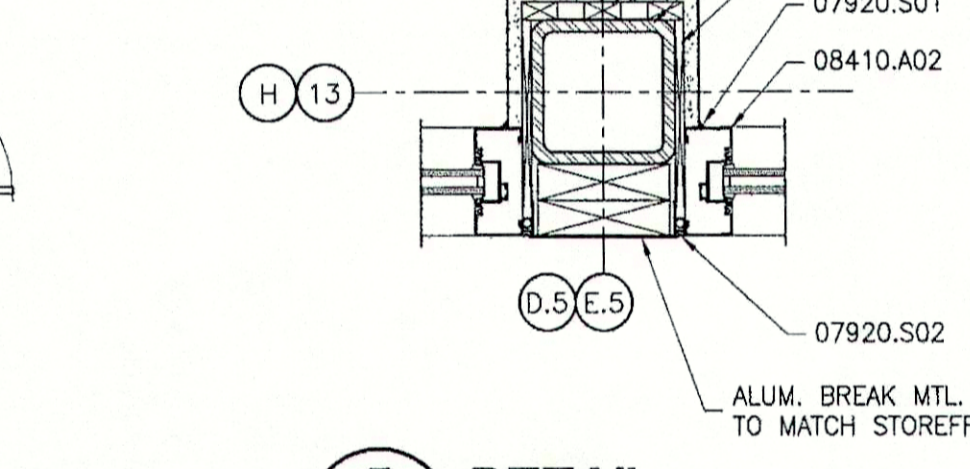
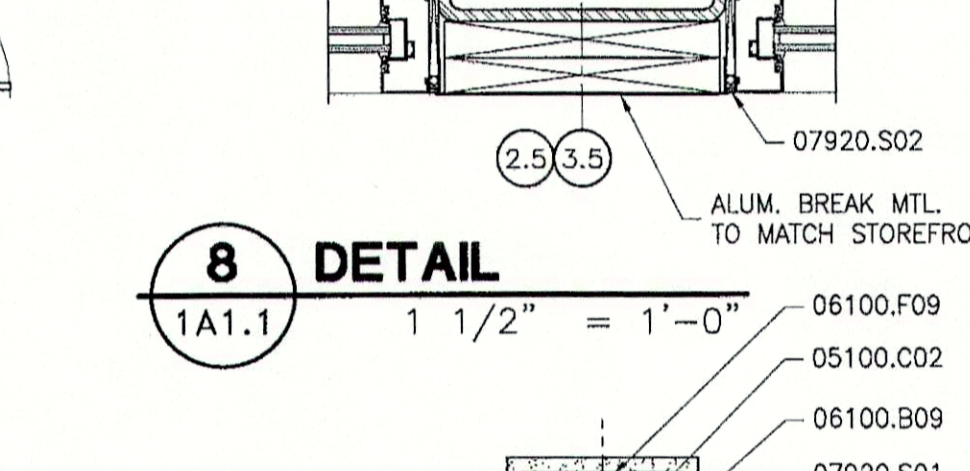
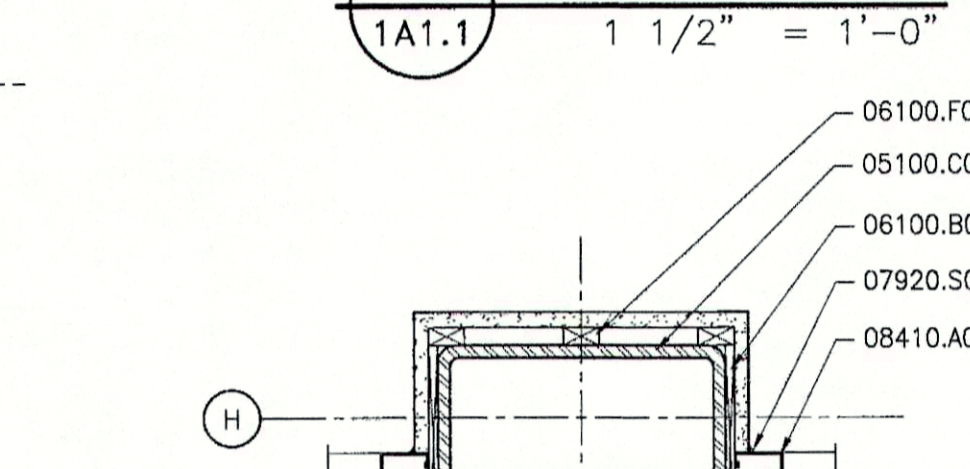
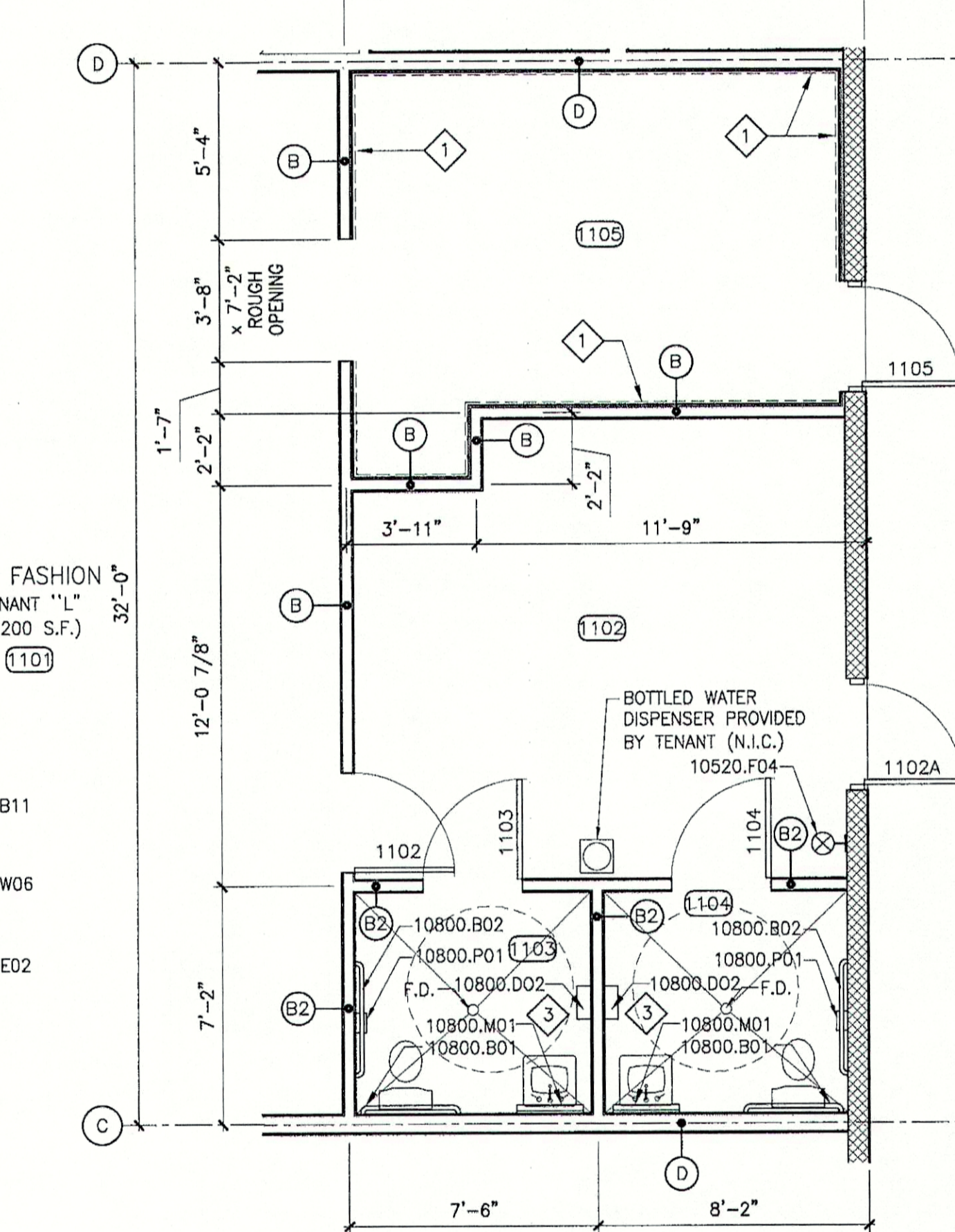
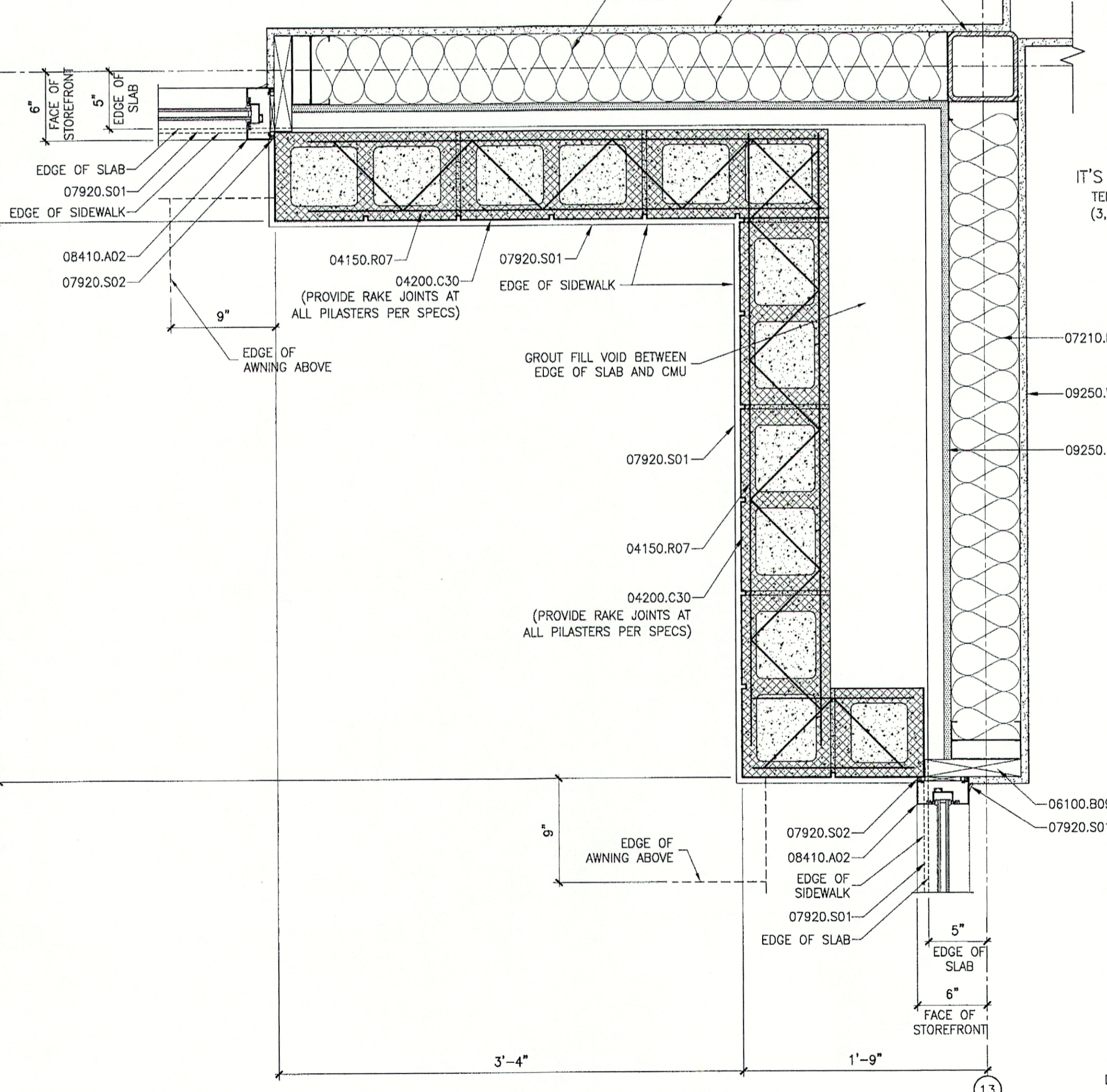


1 DETAIL
1A1.1 1 1/2" = 1'-0"

2 DETAIL
1A1.1 1 1/2" = 1'-0"

3 DETAIL
1A1.1 1 1/2" = 1'-0"



4 DETAIL
1A1.1 1 1/2" = 1'-0"

6 ENLARGED PLAN
1A1.1 IT'S FASHION 1/4" = 1'-0"

5 DETAIL
1A1.1 1 1/2" = 1'-0"

8 DETAIL
1A1.1 1 1/2" = 1'-0"

5 DETAIL
1A1.1 1 1/2" = 1'-0"

8 DETAIL
1A1.1 1 1/2" = 1'-0"

5 DETAIL
1A1.1 1 1/2" = 1'-0"

8 DETAIL
1A1.1 1 1/2" = 1'-0"

5 DETAIL
1A1.1 1 1/2" = 1'-0"

8 DETAIL
1A1.1 1 1/2" = 1'-0"

5 DETAIL
1A1.1 1 1/2" = 1'-0"

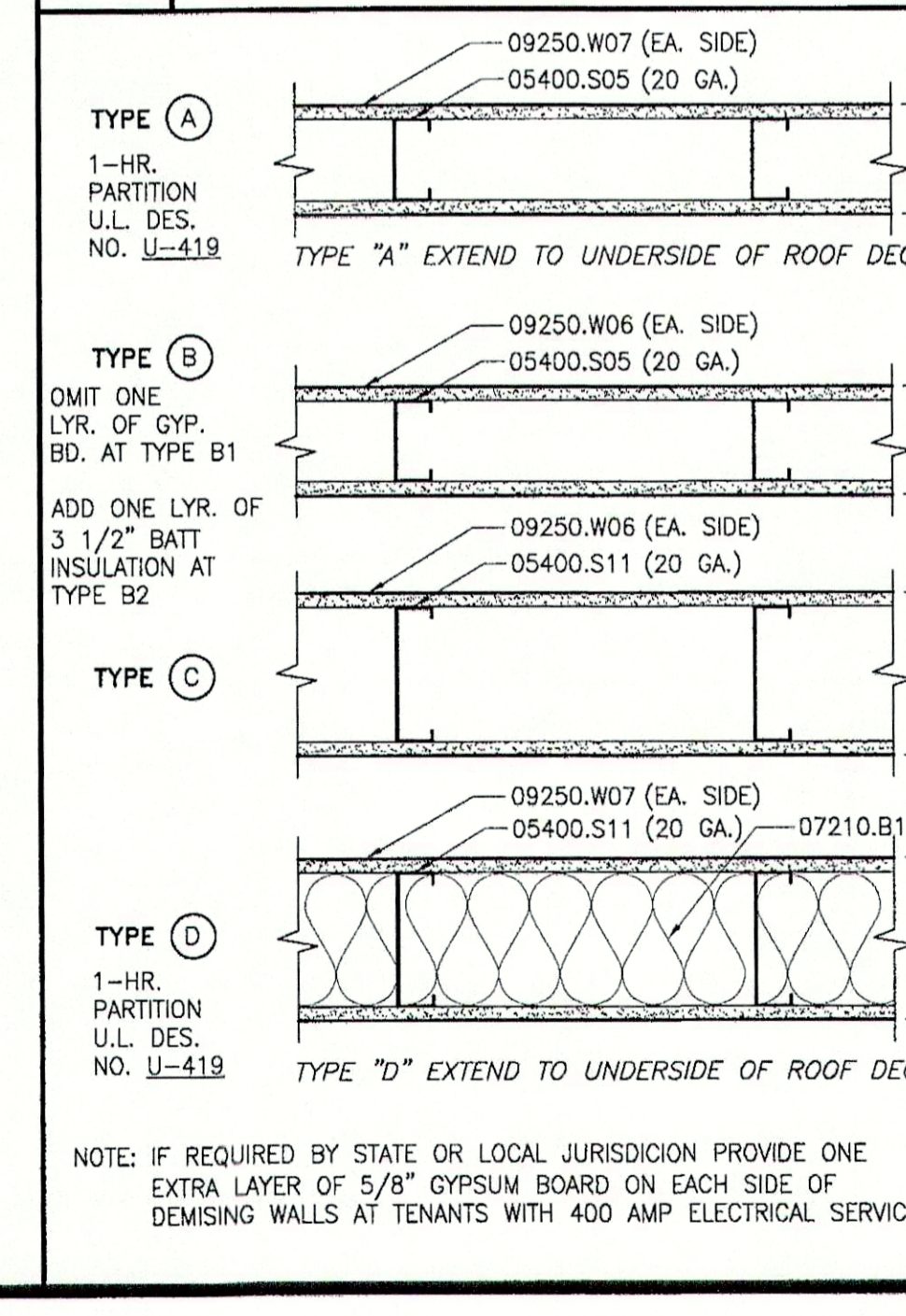
8 DETAIL
1A1.1 1 1/2" = 1'-0"

5 DETAIL
1A1.1 1 1/2" = 1'-0"

8 DETAIL
1A1.1 1 1/2" = 1'-0"

5 DETAIL
1A1.1 1 1/2" = 1'-0"

10 PARTITION TYPES



NOTE: IF REQUIRED BY STATE OR LOCAL JURISDICTION PROVIDE ONE EXTRA LAYER OF 5/8" GYPSUM BOARD ON EACH SIDE OF DEMISING WALLS AT TENANTS WITH 400 AMP ELECTRICAL SERVICE.

9 DETAIL
1A1.1 1 1/2" = 1'-0"

11 KEYNOTES

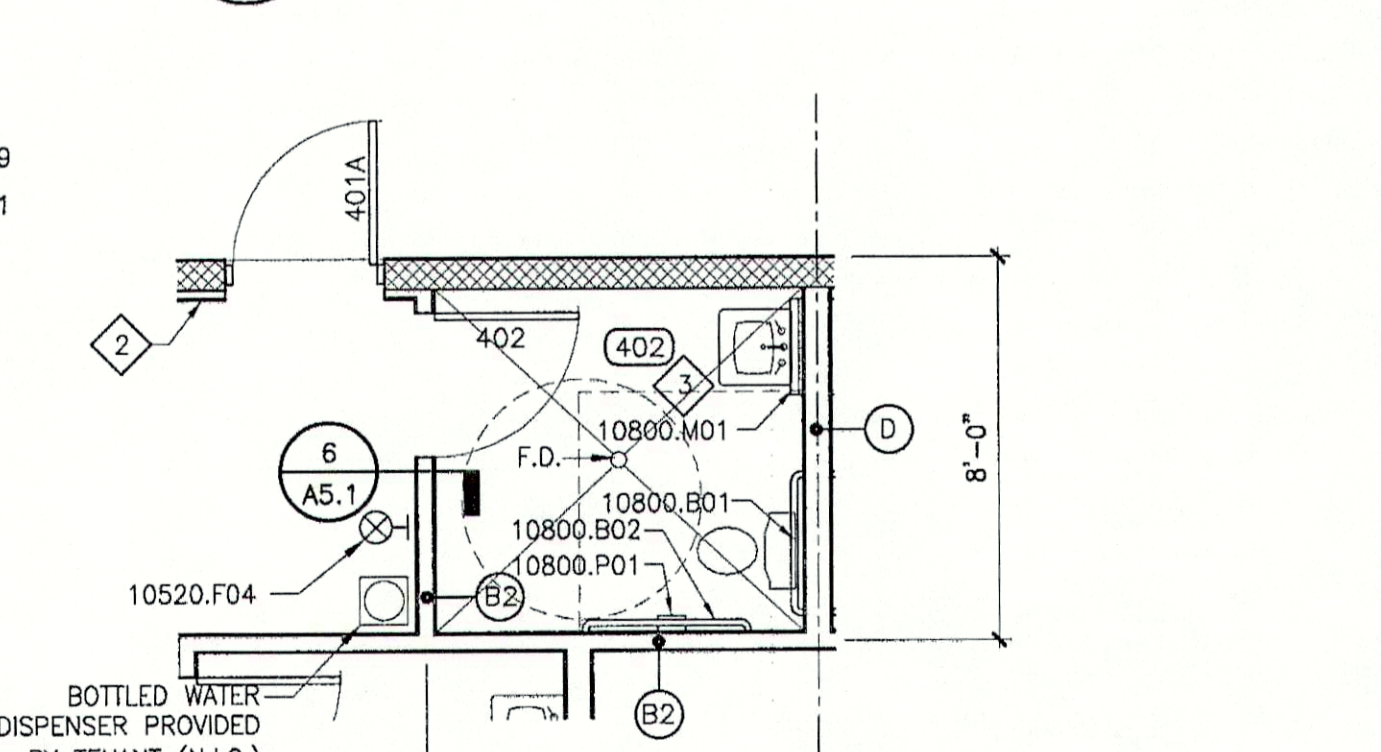
- 04150.R07 8" GALV TRUSS TYPE REINF @ 16" O.C. HORIZ.
- 04200.C05 8 x 8 x 16 C.M.U., SPLIT FACED, RUNNING BOND
- 04200.C30 8 x 8 x 16 C.M.U., SMOOTH FACED, SCORED, RUNNING BOND
- 05100.C02 STEEL TUBE COLUMN, SEE STRUCTURAL
- 05400.H05 2" MTL. HAT CHANNEL @ 16" O.C.
- 05400.S05 3-5/8" MTL. STUD @ 24" O.C., GAUGE AS SHOWN IN PARENTHESIS
- 05400.S10 6" MTL. STUD @ 16" O.C., GAUGE AS SHOWN IN PARENTHESIS
- 05400.S11 6" MTL. STUD @ 24" O.C., GAUGE AS SHOWN IN PARENTHESIS
- 06100.B09 WOOD BLOCKING AS REQ'D
- 06100.F09 WOOD FURRING AS REQ'D @ 12" O.C.
- 07210.B11 BATT INSULATION: 5-1/2" THICK, R-19, KRAFT-FACED
- 07210.R03 RIGID INSULATION, 1-1/2" THICK
- 07920.S01 FLEXIBLE SEALANT
- 07920.S02 FLEXIBLE SEALANT W/ BACKER ROD
- 08410.A02 ALUM. STOREFRONT FRAMING COMPONENT
- 09250.E02 5/8" EXTERIOR GYPSUM SHEATHING, GLASS MAT FACING
- 09250.W06 5/8" GYPSUM BOARD
- 09250.W07 5/8" FIRE-RATED GYPSUM BOARD
- 10520.F04 FIRE EXT. W/WALL HOOK
- 10800.B01 36" x 1-1/4" DIA GRAB BAR
- 10800.B02 42" x 1-1/4" DIA GRAB BAR
- 10800.D02 PAPER TOWEL DISPENSER / WASTE RECEPTACLE, MOUNT 48" TO TOWEL OUTLET.
- 10800.M01 MIRROR: 24" x 36", FRAMED, WITH SHELF
- 10800.P01 TOILET PAPER HOLDER

12 SPECIFIC NOTES

- INTERIOR WALLS IN FITTING ROOMS NOTED TO RECEIVE 3/8" OSB PLYWOOD FLOOR TO CEILING ON FITTING ROOM SIDE BETWEEN STUDS AND DRYWALL TYPICAL CONTINUOUS IN LOCATIONS NOTED. FURR WITH 7/8" HAT CHANNELS AT CMU WALLS.
- INSTALL 5/8" GYPSUM BOARD ON 2" METAL HAT CHANNEL @ 16" O.C. ON MASONRY WALLS NOTED.
- 2% MAX. SLOPE FOR RESTROOM FLOOR DRAINAGE.

13 GENERAL NOTES

- BOTTLED WATER DISPENSER PROVIDED BY TENANT. (N.I.C.)
- EXTEND GYP. BD. TO METAL DECK IN ALL AREAS WITHOUT CEILINGS. IN AREAS WITH CEILINGS INSTALL GYP. BD. 6" ABOVE CEILING HEIGHT.



7 ENLARGED PLAN
1A1.1 RESTROOMS 1/4" = 1'-0"

(TYP @ ROOMS 202, 302, 402, 502, 602, 603, 702, 802, AND 803)

DATE	DESCRIPTION	BY
12/4/08	REV #5	CAC
3/4/08	REV #3	LMR
9/17/07	REV #1	LMR

DDG DUPLANTIS DESIGN GROUP, PC
 Respect • Integrity • Client Satisfaction • Excellence
 THIBODAUX, LOUISIANA
 Mandeville, Louisiana 70301
 Call: 985.447.0090
 Fax: 985.447.0099

STAMP: STATE OF MISSISSIPPI ARCHITECTS
 SIGNATURE: [Signature]
 DATE: 12/23/08

PROPOSED RETAIL DEVELOPMENT
 CITY OF BOUQUETTE
 ST. CHARLES PARISH, LOUISIANA
 FOR THE SPECTRA GROUP, INC.
 MEMPHIS, TENNESSEE

DRAWN: LMR
 CHECKED: SMV
 DATE: 8/13/07
 SCALE: AS NOTED ON DWG
 PROJECT NO.: 07-205A
 FILE: REVISION 3/A1-2.DWG
 SHEET: **A1.2**