

**5 KEYNOTES**

02200.F04	COMPACTED FILL AS REQ'D
02280.S01	APPLY TERMITE SOIL TREATMENT
03300.S01	CONCRETE SLAB, SEE STRUCTURAL
03300.V01	VAPOR BARRIER, 6 MIL. VISQUEEN
04200.C02	4 x 8 x 16 C.M.U., SPLIT FACED, RUNNING BOND
05300.D01	STEEL DECK, SEE STRUCTURAL
05400.C02	6" MTL. CHANNEL TRACK, (GAUGE AS SHOWN IN PARENTHESIS)
05400.J05	6" MTL. JOIST @ 16" O.C., GAUGE AS SHOWN IN PARENTHESIS
05400.R05	6" MTL. RAFTER @ 16" O.C., GAUGE AS SHOWN IN PARENTHESIS
05400.S10	6" MTL. STUD @ 16" O.C., GAUGE AS SHOWN IN PARENTHESIS
06100.B09	WOOD BLOCKING AS REQ'D
07240.A01	E.I.F.S. OVER INSULATION BOARD, SEE DETAILS
07400.C02	24 GA. PREFIN. METAL CLOSURE CLIP
07400.R01	24 GA. PREFIN. METAL STANDING SEAM ROOF
07600.D01	24 GA. PREFIN. METAL DRIP/FLASHING
07600.F02	24 GA. PREFIN. METAL FLASHING
07600.G01	24 GA. PREFIN. MTL. GUTTER
07920.S02	FLEXIBLE SEALANT W/ BACKER ROD
09250.E02	5/8" EXTERIOR GYPSUM SHEATHING, GLASS MAT FACING
09500.C02	24 x 48 SUSP ACCOUS TILE
09900.F01	PAINT WITH EXTERIOR PAINT MATERIAL

DATE	DESCRIPTION	BY

**DDG DUPLANTIS**  
**DDG DESIGN GROUP, PC**  
 Respect • Integrity • Client Satisfaction • Excellence

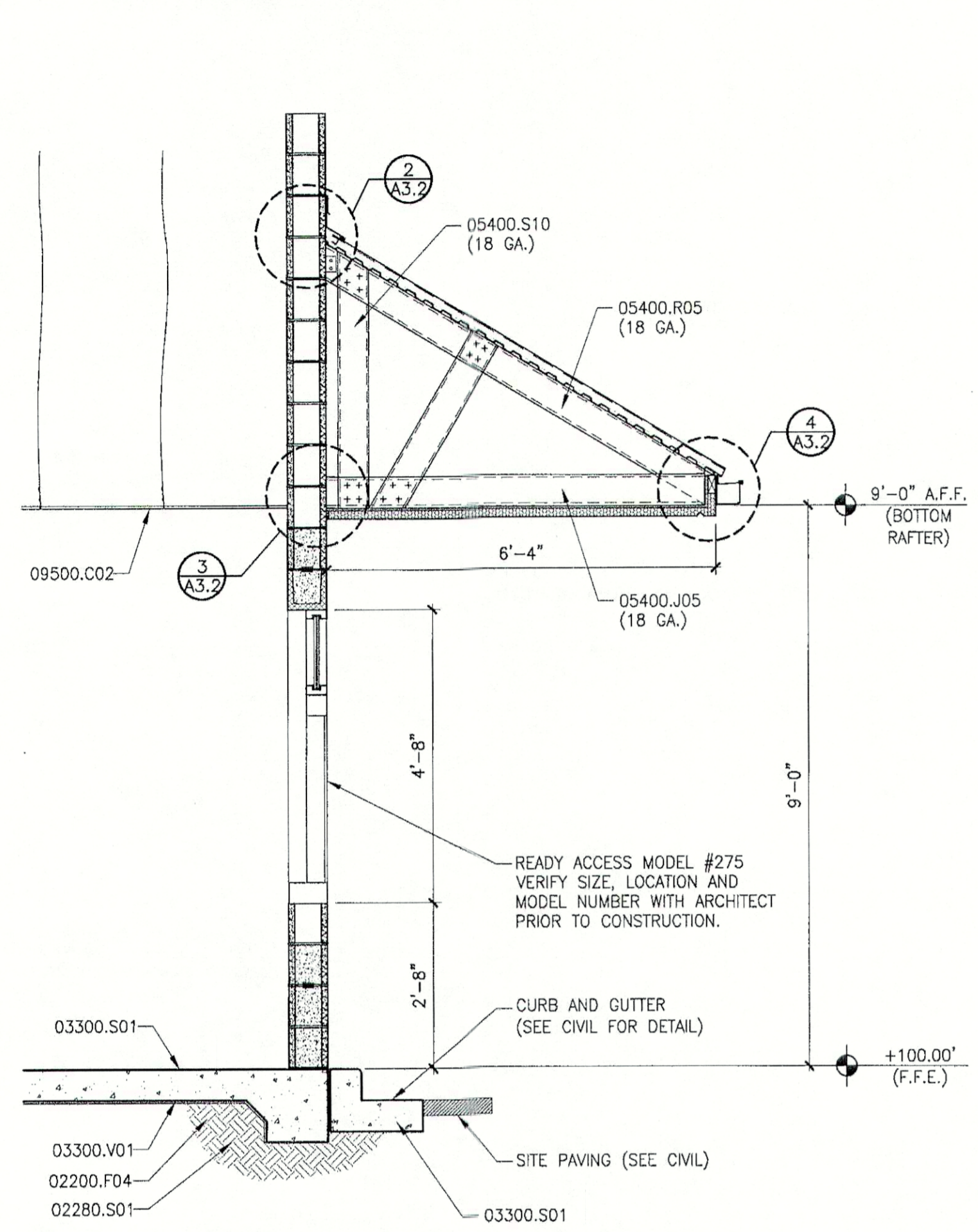
THIBODAX • MANDEVILLE • HOUSTON  
 Civil Engineers • Site Development • Land Planning • Public Works • Architecture  
 314 East Bayou Road  
 Thibodaux, Louisiana 70301  
 Phone: 985.447.0090  
 Fax: 985.447.7099

SIGNATURE: *Sam Miller*  
 DATE: 8/13/07

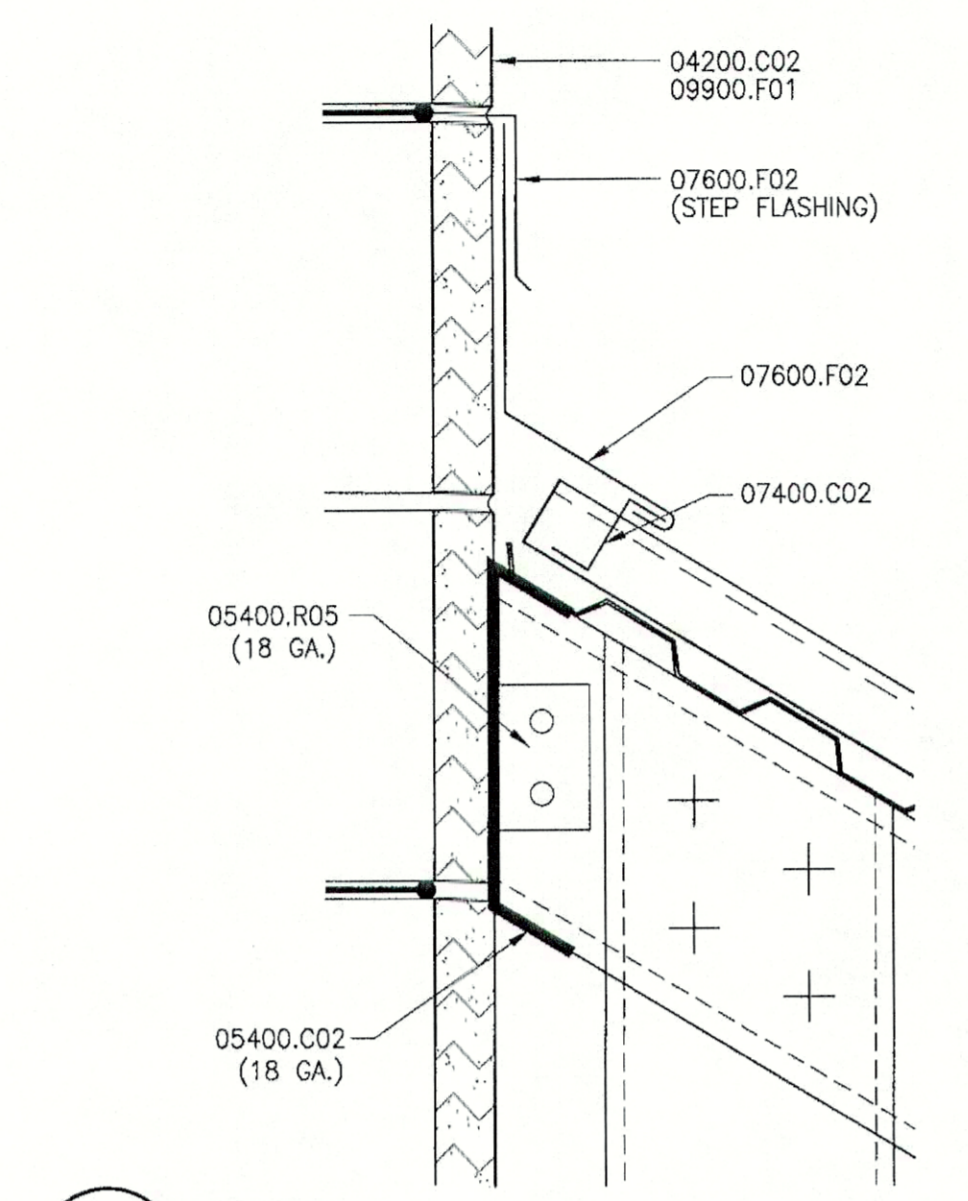
STAMP: STATE OF LOUISIANA REGISTERED PROFESSIONAL ENGINEER  
 No. 115  
 STEPHEN M. VIGORIE

PROPOSED RETAIL DEVELOPMENT  
 CITY OF BOULTE  
 ST. CHARLES PARISH, LOUISIANA  
 FOR THE SPECTRA GROUP, INC.  
 MEMPHIS, TENNESSEE

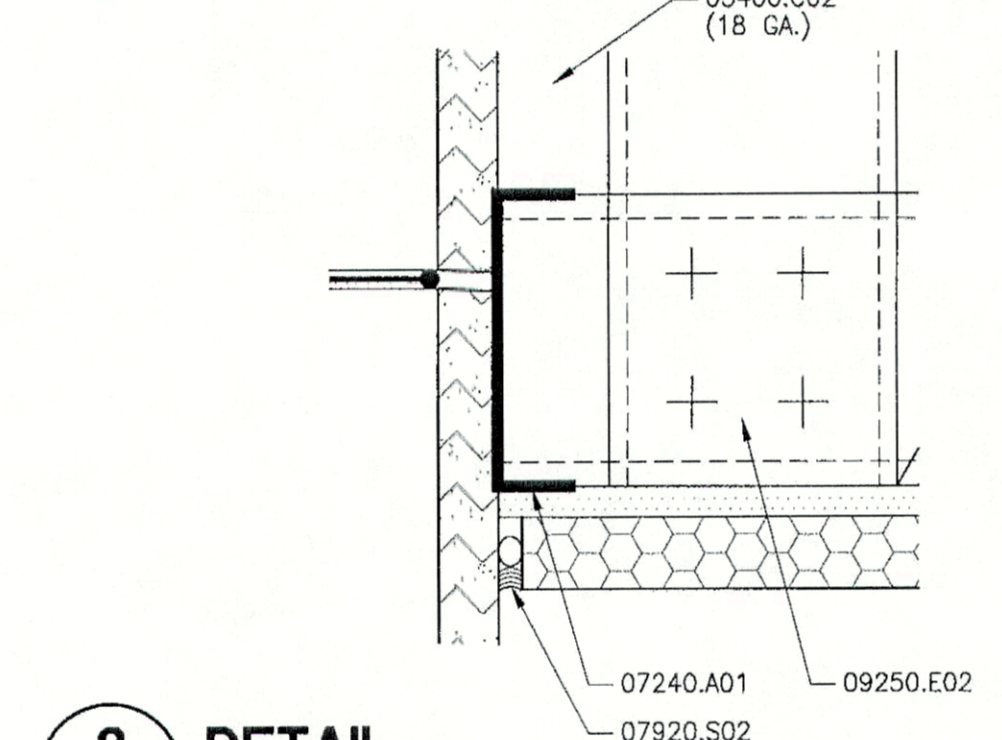
DRAWN: CJC  
 CHECKED: SMV  
 DATE: 8/13/07  
 SCALE: AS NOTED ON DWG  
 PROJECT NO.: 07-205A  
 FILE: CONDOCS\A3-2.DWG  
 SHEET: **A3.2**



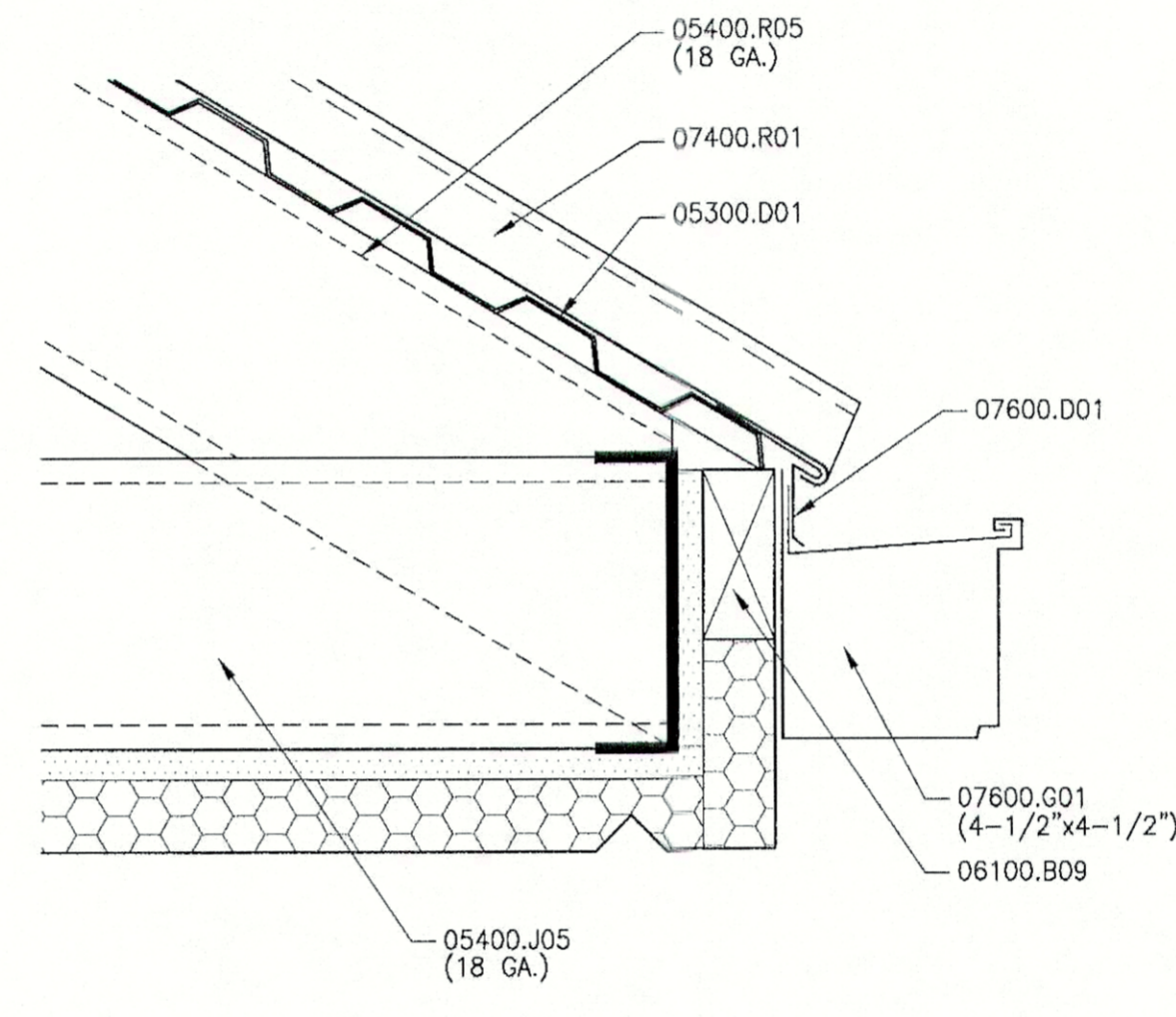
**1 SECTION**  
 1A3.1 1/2" = 1'-0"



**2 DETAIL**  
 1A3.2 3" = 1'-0"



**3 DETAIL**  
 1A3.2 3" = 1'-0"



**4 DETAIL**  
 1A3.2 3" = 1'-0"