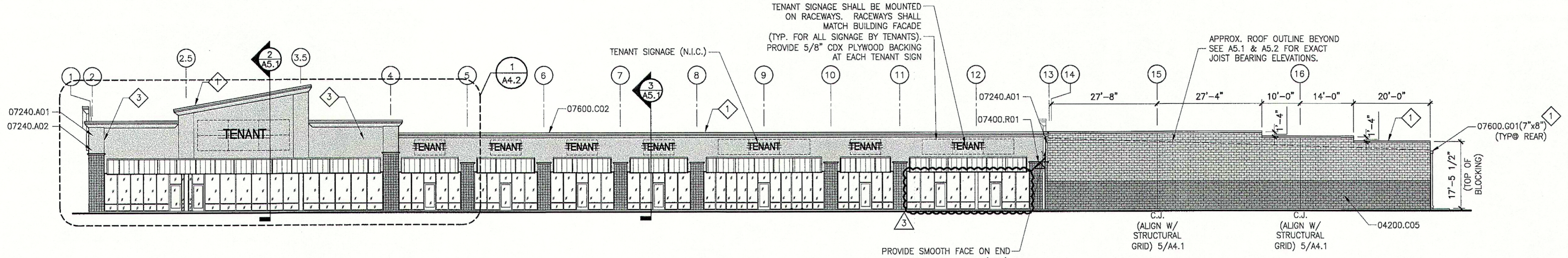
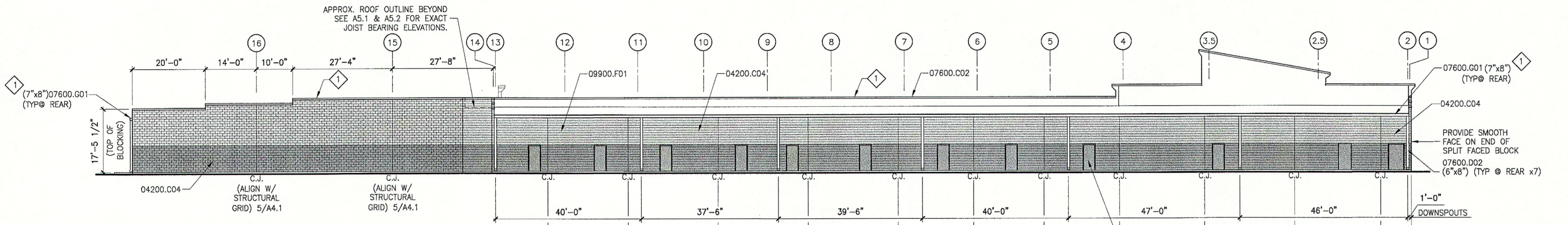


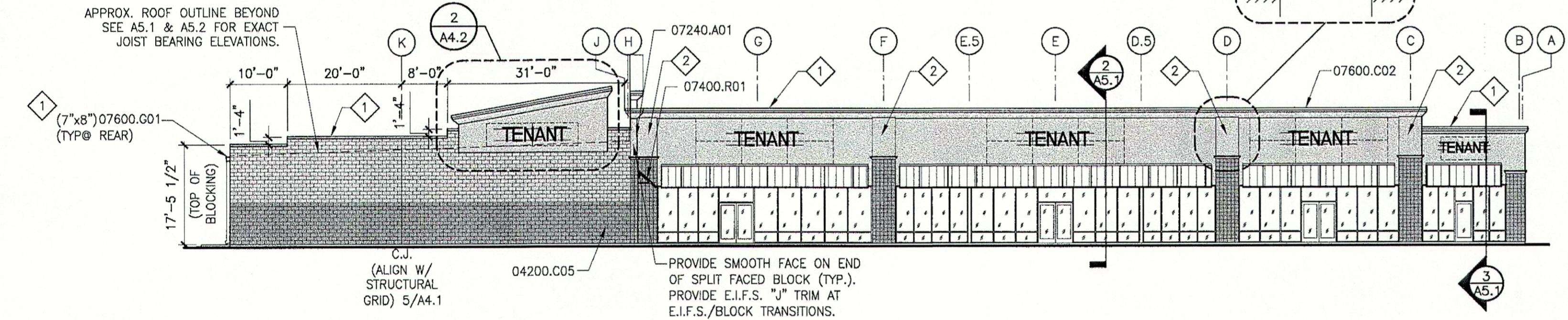
1 EXTERIOR ELEVATION
1A1.1 1/16" = 1'-0"



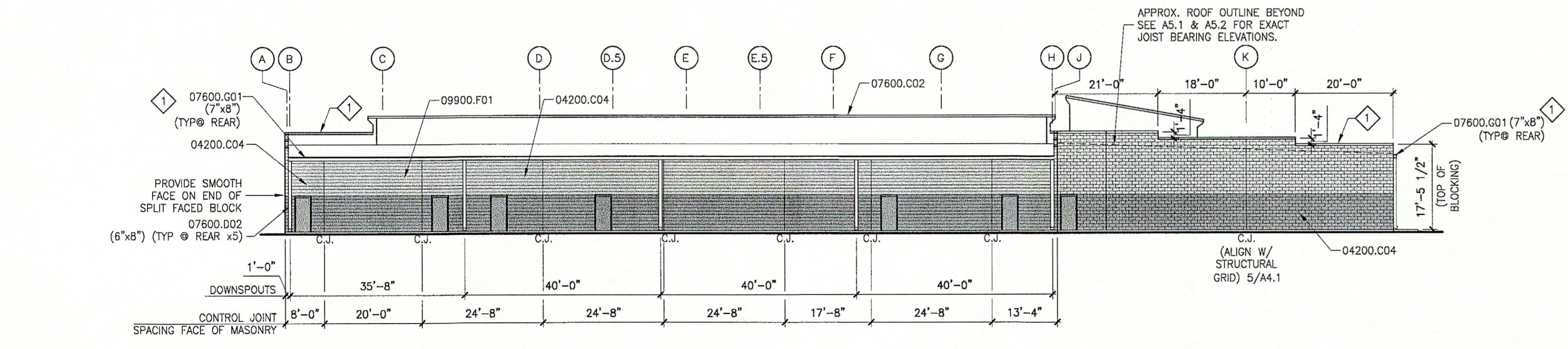
2 EXTERIOR ELEVATION
1A1.1 1/16" = 1'-0"



3 EXTERIOR ELEVATION
1A1.1 1/16" = 1'-0"



4 EXTERIOR ELEVATION
1A1.1 1/16" = 1'-0"



6 GENERAL NOTES

1. PAINT ALL EXPOSED MATERIALS INCLUDING BUT NOT LIMITED TO GAS PIPING, COPPER PIPING, CONDUIT, UNISTRUT, MISC. SUPPORTS, ETC.

7 KEYNOTES

- 04200.C04 8 x 8 x 16 C.M.U., SMOOTH FACED, RUNNING BOND
- 04200.C05 8 x 8 x 16 C.M.U., SPLIT FACED, RUNNING BOND
- 07240.A01 E.I.F.S. OVER INSULATION BOARD, SEE DETAILS
- 07240.A02 E.I.F.S. ACCENT BAND
- 07400.R01 24 GA. PREFIN. METAL STANDING SEAM ROOF
- 07600.C02 24 GA. PREFIN. METAL COPING
- 07600.D02 24 GAUGE PREFIN. METAL DOWNSPOUT
- 07600.G01 24 GA. PREFIN. MTL. GUTTER
- 07920.S02 FLEXIBLE SEALANT W/ BACKER ROD
- 09900.F01 PAINT WITH EXTERIOR PAINT MATERIAL

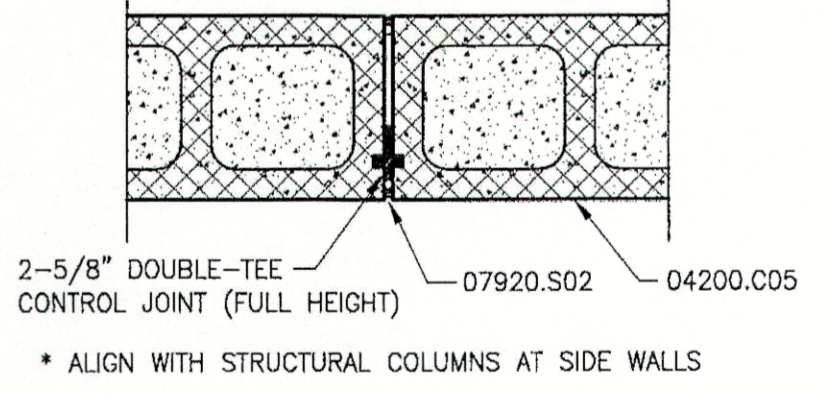
8 PAINT SCHEDULE

- BENJAMIN MOORE GRANT BEIGE HC-83
- BENJAMIN MOORE HUNTINGTON BEIGE HC-21
- FABRAL BONE WHITE
- METAL AWNING FABRAL - HEMLOCK GREEN

9 SPECIFIC NOTES

- 1 EXPOSED FASTENERS WILL ONLY BE ALLOWED WITH PRIOR APPROVAL OF OWNER (TYP. @ ALL FLASHING).
- 2 ONE INCH PROJECTION AT LOCATIONS NOTED.
- 3 SCORE JOINT AT LOCATIONS NOTED.

5 DETAIL
1A4.1 CMU CONTROL JOINT 1-1/2" = 1'-0"



REV #	DATE	DESCRIPTION	BY
12/4/08		REV #5	CJC
3/4/08		REV #3	LMR
9/17/07		REV #1	LMR

DDG DUPLANTIS DESIGN GROUP, PC
 Respect • Integrity • Client Satisfaction • Excellence
 THIBODAUX, LOUISIANA
 Civil Engineering • Site Development • Land Planning • Public Works • Architecture
 314 East Beauvoir Road
 Thibodaux, Louisiana 70301
 Phone: 985.447.0090
 Fax: 985.447.7009

Stamp area with signature and date: 12/23/08

PROPOSED RETAIL DEVELOPMENT
 CITY OF BOULTE
 ST. CHARLES PARISH, LOUISIANA
 FOR THE SPECTRA GROUP, INC.
 MEMPHIS, TENNESSEE

DRAWN	LMR
CHECKED	SMV
DATE	8/13/07
SCALE	AS NOTED ON DWG
PROJECT NO.	07-205A
FILE:	REVISION 3/A4-1.DWG
SHEET	A4.1