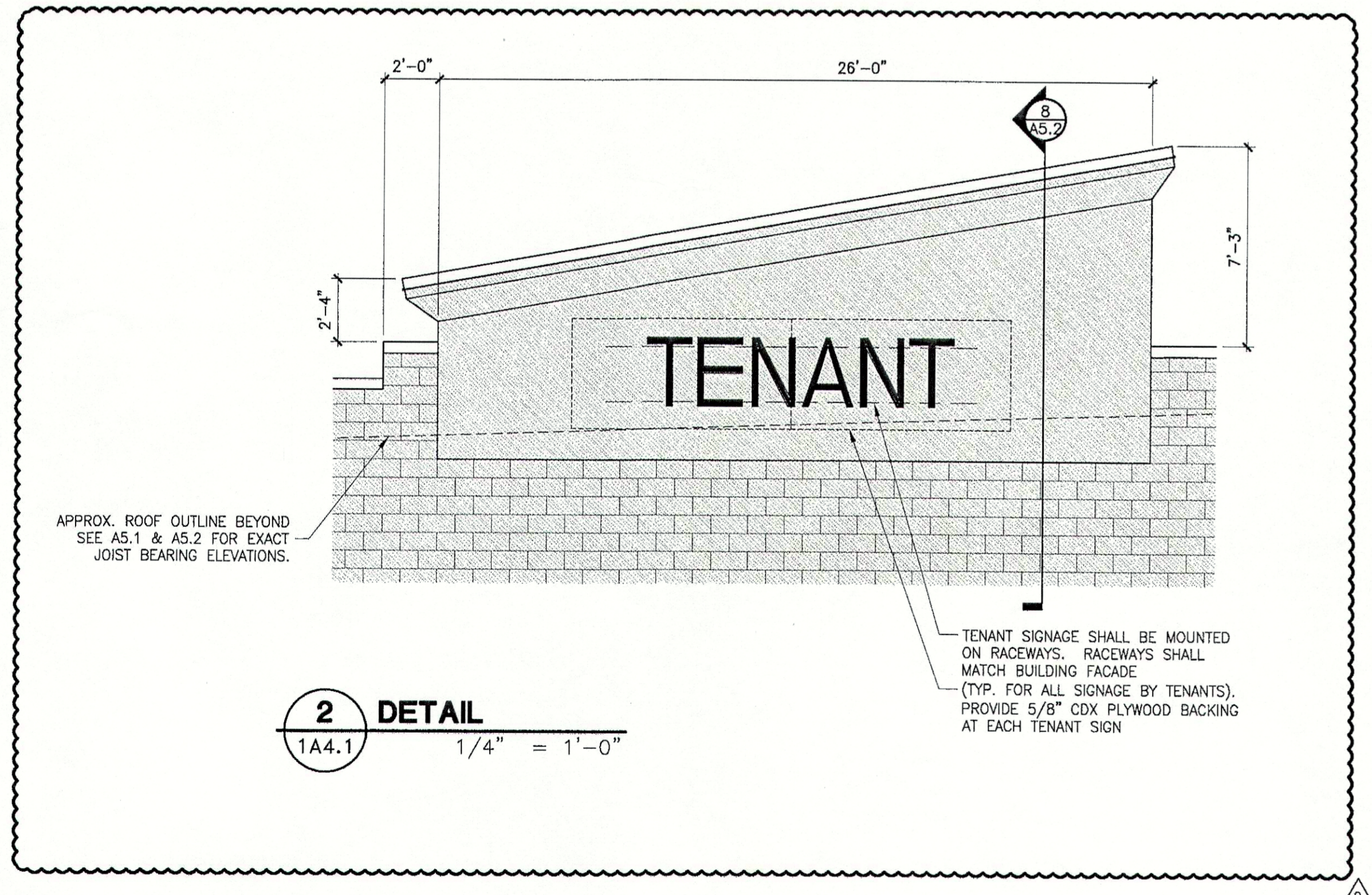


1 DETAIL
1A4.1 1/4" = 1'-0"



2 DETAIL
1A4.1 1/4" = 1'-0"

2	GENERAL NOTES
	1. PAINT ALL EXPOSED MATERIALS INCLUDING BUT NOT LIMITED TO GAS PIPING, COPPER PIPING, CONDUIT, UNISTRUT, MISC. SUPPORTS, ETC.
3	KEYNOTES
04200.C30	8 x 8 x 16 C.M.U., SMOOTH FACED, SCORED, RUNNING BOND
07240.A01	E.I.F.S. OVER INSULATION BOARD, SEE DETAILS
07240.A02	E.I.F.S. ACCENT BAND
07400.R01	24 GA. PREFIN. METAL STANDING SEAM ROOF
07600.C02	24 GA. PREFIN. METAL COPING
08410.A02	ALUM. STOREFRONT FRAMING COMPONENT
08410.D01	ALUM. STOREFRONT DOOR
4	PAINT SCHEDULE
2	BENJAMIN MOORE GRANT BEIGE HC-83
	BENJAMIN MOORE HUNTINGTON BEIGE HC-21
	FABRAL BONE WHITE
	METAL AWNING FABRAL - HEMLOCK GREEN
5	SPECIFIC NOTES
1	EXPOSED FASTENERS WILL ONLY BE ALLOWED WITH PRIOR APPROVAL OF OWNER.

REVISION	
DATE	DESCRIPTION
3/4/08	REV #3 LMR
9/17/07	REV #1 LMR

DDG DUPLANTIS DESIGN GROUP, PC
 Respect • Integrity • Client Satisfaction • Excellence
 THIBODAUX MANDEVILLE HOUSTON
 Civil Engineering • Site Development • Land Planning • Public Works • Architecture
 314 East Bayou Road Thibodaux, Louisiana 70301
 Phone: 985.447.0090 Fax: 985.447.7069

STAMP
 SIGNATURE: *[Signature]*
 DATE: 3/5/08

PROPOSED RETAIL DEVELOPMENT
 CITY OF BOUETTE
 ST. CHARLES PARISH, LOUISIANA
 FOR THE SPECTRA GROUP, INC.
 MEMPHIS, TENNESSEE

DRAWN LMR
 CHECKED SMV
 DATE 8/13/07
 SCALE AS NOTED ON DWG
 PROJECT NO. 07-205A
 FILE: REVISION 3/A4-2.DWG
 SHEET
A4.2